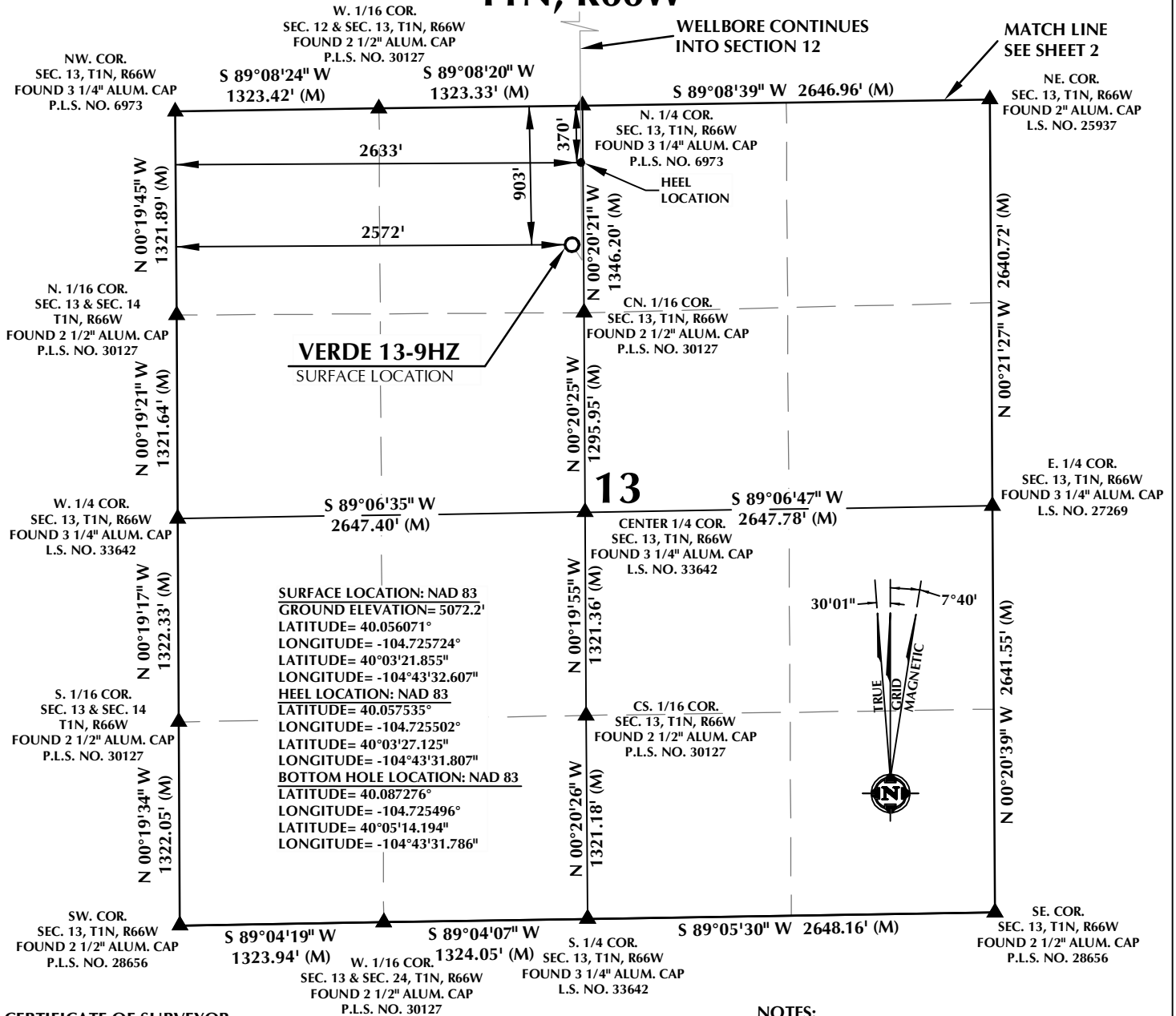


# T1N, R66W



## CERTIFICATE OF SURVEYOR:

THIS IS TO CERTIFY THAT THE ABOVE PLAT WAS PREPARED FROM FIELD NOTES OF ACTUAL SURVEYS MADE BY ME OR UNDER MY SUPERVISION AND THAT THE SAME ARE TRUE AND CORRECT TO THE BEST OF MY KNOWLEDGE AND BELIEF. THIS CERTIFICATE DOES NOT REPRESENT A LAND SURVEY PLAT OR IMPROVEMENT SURVEY PLAT AS DEFINED BY C.R.S. 38-5-102 AND CANNOT BE RELIED UPON TO DETERMINE OWNERSHIP.

*Randall K. French*  
 RANDALL K. FRENCH  
 PROFESSIONAL LAND SURVEYOR  
 COLORADO REGISTRATION NUMBER 38512  
 6/14/17

NOTICE:  
 ACCORDING TO COLORADO STATE LAW YOU MUST TAKE LEGAL ACTION BASED UPON ANY DEFECT IN THIS SURVEY WITHIN THREE YEARS AFTER YOU FIRST DISCOVER SUCH DEFECT. IN NO EVENT MAY ANY ACTION BASED UPON ANY DEFECT IN THIS SURVEY BE COMMENCED MORE THAN TEN YEARS FROM THE DATE ON THE CERTIFICATION SHOWN HEREON.

NOTE:  
 MAGNETIC NORTH IS CURRENT AS OF 6/6/2017.  
 MAGNETIC NORTH CHANGES WEST 0°06' PER YEAR.

0 1000' 2000'

SCALE: 1" = 1000'

## NOTES:

1. ▲ INDICATES SECTION CORNER
2. ● INDICATES CALCULATED CORNER
3. ELEVATION BASED ON NAVD88 (GEOID09)
4. BASIS OF BEARING DERIVED FROM COLORADO COORDINATE SYSTEM OF 1983 NORTH ZONE.
5. ALL MEASURED DISTANCES ARE GRID.  
 COMBINED SCALE FACTOR: .99972250 CALCULATED FROM THE W. 1/4 CORNER OF SECTION 13, T1N, R66W
6. OPERATOR: ROB WILSON / PDOP = 1.4
7. SEE ADDENDUM TO WELL LOCATION CERTIFICATE FOR EXISTING IMPROVEMENTS WITHIN 500' OF THE WELL PAD.
8. WELL FOOTAGES ARE MEASURED AT RIGHT ANGLES TO THE SECTION LINES.
9. THE BOTTOM OF HOLE BEARS N00°29'29"W, 10834' FROM THE HEEL LOCATION.

## WELL PAD - VERDE 13-13HZ

VERDE 13-9HZ  
 WELL LOCATION CERTIFICATE  
 903' FNL & 2572' FWL NENW (SURFACE)  
 370' FNL & 2633' FWL NENW (HEEL)  
 LOCATED IN SECTION 13  
 53' FNL & 2613' FWL LOT 2 (NENW) (BOTTOM)  
 LOCATED IN SECTION 1  
 T1N, R66W, 6TH P.M.  
 WELD COUNTY, COLORADO

**Kerr-McGee Oil &  
 Gas Onshore L.P.**  
 1099 18th Street  
 Denver, Colorado 80202



## CONSULTING, LLC

SHERIDAN OFFICE  
 1095 Saberton Avenue  
 Sheridan, Wyoming 82801  
 Phone 307-674-0609

LOVELAND OFFICE  
 1635 Foxtrail Drive, Suite 204  
 Loveland, Colorado 80538  
 Phone 970-776-4331

DRAFTED BY:	LMO	CHECKED BY:	RKF	SHEET NO:
DATE DRAFTED:	6/14/17	DATE SURVEYED:	5/11/17	1
REVISED:		FILE NAME:	16-161	1 OF 3

**CERTIFICATE OF SURVEYOR:**

## WELLBORE CONTINUES INTO SECTION 1

E. 1/16 COR.  
SEC. 1 & SEC. 12  
T1N, R66W  
UND 2 1/2" ALUM. CAP  
P.L.S. NO. 30120

**MATCH LINE**  
**SEE SHEET 3**

NE. COR.  
SEC. 12, T1N, R66W  
A FOUND 2" ALUM. CAP  
L.S. NO. 25937

NW. COR.  
SEC. 12, T1N, R66W  
FOUND 2" ALUM. CAP  
L.S. NO. 25937

**S 89°12'31" W  
1309.36' (M)**

**S 89°12'56" W  
1309.39' (M)**

**S 89°13'30" W**  
**1309.74' (M)**

**S 89°13'10" W**  
**1309.49' (M)**

W. 1/16 COR.  
SEC. 1 & SEC. 12  
T1N, R66W  
FOUND 2<sup>nd</sup> ALUM. CAP  
L.S. NO. 25937

N. 1/4 COR.  
SEC. 12, T1N, R66W  
FOUND 3 1/4" ALUM. CAP  
L.S. NO. 25937

NW. 1/16 COR.  
SEC. 12, T1N, R66W  
FOUND 3 1/4" ALUM. CAP  
P.L.S. NO. 6973

S 89°11'12" W  
1312.78' (M)

CN. 1/16 COR.  
SEC. 12, T1N, R66W  
FOUND 3 1/4" ALUM. CAP  
P.L.S. NO. 6973

N. 1/16 COR.  
SEC. 12, T1N, R66W &  
SEC. 7, T1N, R65W  
BOUND 2" ALUM. CAP  
L.S. NO. 25937

**N 01°27'51" W  
1331.61' (M)**

SE  
FOR

SEC  
S  
FO

00°25'21" W  
332 11' (M)

MA

**MATCH LINE**  
**SEE SHEET 1**

**NOTES:**

1. ▲ INDICATES SECTION CORNER
2. ● INDICATES CALCULATED CORNER
3. ELEVATION BASED ON NAVD88 (GEOID09)
4. BASIS OF BEARING DERIVED FROM COLORADO COORDINATE SYSTEM OF 1983 NORTH ZONE.
5. ALL MEASURED DISTANCES ARE GRID.
6. COMBINED SCALE FACTOR: .99972250 CALCULATED FROM THE W. 1/4 CORNER OF SECTION 13, T1N, R66W
7. OPERATOR: ROB WILSON / PDOP = 1.4
8. SEE ADDENDUM TO WELL LOCATION CERTIFICATE FOR EXISTING IMPROVEMENTS WITHIN 500' OF THE WELL PAD.
9. WELL FOOTAGES ARE MEASURED AT RIGHT ANGLES TO THE SECTION LINES.
10. THE BOTTOM OF HOLE BEARS N00°29'29"W, 10834' FROM THE HELL LOCATION.


**SURFACE LOCATION: NAD 83**  
**GROUND ELEVATION= 50752.2'**  
**LATITUDE= 40.056071°**  
**LONGITUDE= -104.725724°**  
**LATITUDE= 40°03'21.855"**  
**LONGITUDE= -104°43'32.607"**  
**HEEL LOCATION: NAD 83**  
**LATITUDE= 40.057535°**  
**LONGITUDE= -104.725502°**  
**LATITUDE= 40°03'27.125"**  
**LONGITUDE= -104°43'31.807"**  
**BOTTOM HOLE LOCATION: NAD 83**  
**LATITUDE= 40.087276°**  
**LONGITUDE= -104.725496°**  
**LATITUDE= 40°05'14.194"**  
**LONGITUDE= -104°43'31.786"**

**NOTE:**  
MAGNETIC NORTH IS CURRENT AS OF 6/6/2017.  
MAGNETIC NORTH CHANGES WEST 0°06' PER YEAR.

**SCALE: 1" = 1 000'**

**CERTIFICATE OF SURVEYOR:**

THIS IS TO CERTIFY THAT THE ABOVE PLAT WAS PREPARED FROM FIELD NOTES OF ACTUAL SURVEYS MADE BY ME OR UNDER MY SUPERVISION AND THAT ALL SAME ARE TRUE AND CORRECT TO THE BEST OF MY KNOWLEDGE AND BELIEF. THIS CERTIFICATE DOES NOT REPRESENT A LAND SURVEY PLAT OR IMPROVEMENT SURVEY PLATS DEFINED BY C.R.S. 4-5-102 AND CANNOT BE RELIED UPON TO DETERMINE OWNERSHIP.


 38512  
 RANDALL K. FRENCH  
 PROFESSIONAL LAND SURVEYOR  
 COLORADO REGISTRATIONS NUMBER 38512  
 6/14/17  
 PROFESSIONAL LAND SURVEYOR

**NOTICE:** ACCORDING TO COLORADO STATE LAW YOU MUST COMMENCE ANY LEGAL ACTION BASED UPON ANY DEFECT IN THIS SURVEY WITHIN THREE YEARS AFTER YOUR FIRST DISCOVER SUCH DEFECT. IN NO EVENT MAY ANY ACTION BASED UPON ANY DEFECT IN THIS SURVEY BE COMMENCED MORE THAN TEN YEARS FROM THE DATE ON THE CERTIFICATION SHOWN HEREON.

## WELL PAD - VERDE 13-13HZ

**VERDE 13-9HZ**  
**WELL LOCATION CERTIFICATE**  
**903' FNL & 2572' FWL NENW (SURFACE)**  
**370' FNL & 2633' FWL NENW (HEEL)**  
**LOCATED IN SECTION 13**  
**53' FNL & 2613' FWL LOT 2 (NENW) (BOTTOM)**  
**LOCATED IN SECTION 1**  
**T1N, R66W, 6TH P.M.**  
**WELD COUNTY, COLORADO**

**Kerr-McGee Oil &  
Gas Onshore L.P.**  
1099 18th Street  
Denver, Colorado 80202



CONSULTING, LLC

**SHERIDAN OFFICE**  
1095 Saberton Avenue  
Sheridan, Wyoming 82801  
Phone 307-674-0609

**LOVELAND OFFICE**  
1635 Foxtrail Drive, Suite 204  
Loveland, Colorado 80538  
Phone 970-776-4331

**DRAFTED BY:** LMO

CHECKED BY:	RKF
-------------	-----

SHEET NO:

DATE DRAFTED: 6/14/17

DATE SURVEYED: 5/11/17

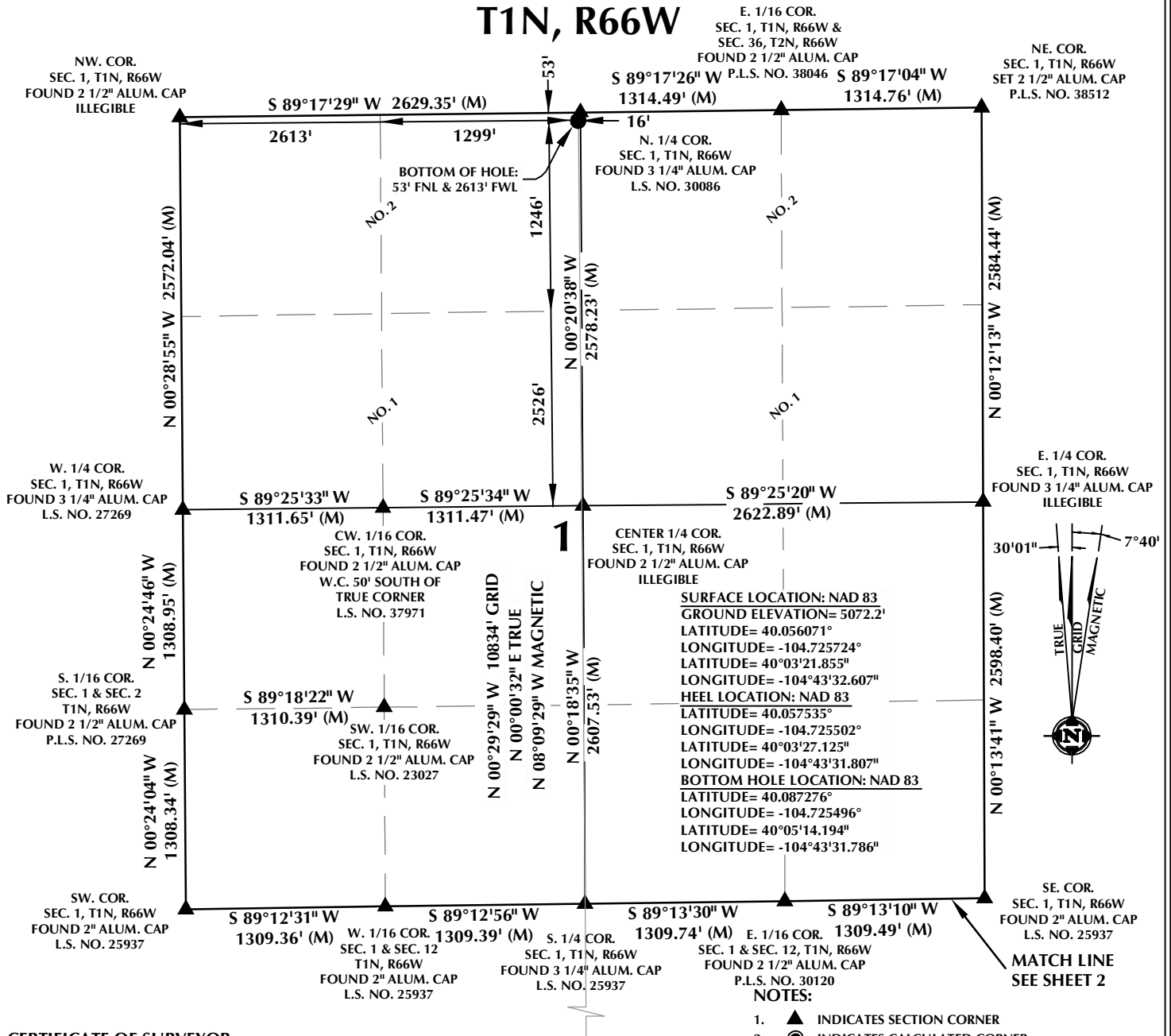
2

REVISÉ:

FILE NAME:	16-161
------------	--------

2 OF 3

# T1N, R66W



## CERTIFICATE OF SURVEYOR:

THIS IS TO CERTIFY THAT THE ABOVE PLAT WAS PREPARED FROM FIELD NOTES OF ACTUAL SURVEYS MADE BY ME OR UNDER MY SUPERVISION AND THAT THE SAME ARE TRUE AND CORRECT TO THE BEST OF MY KNOWLEDGE AND BELIEF. THIS CERTIFICATE DOES NOT REPRESENT A LAND SURVEY PLAT OR IMPROVEMENT SURVEY PLAT AS DEFINED BY C.R.S. 38-5-102 AND CANNOT BE RELIED UPON TO DETERMINE OWNERSHIP.

*Randall K. French*  
 RANDALL K. FRENCH  
 PROFESSIONAL LAND SURVEYOR  
 COLORADO REGISTRATION NUMBER 38512  
 6/14/17

NOTICE: ACCORDING TO COLORADO STATE LAW YOU MUST TAKE LEGAL ACTION BASED UPON ANY DEFECT IN THIS SURVEY WITHIN THREE YEARS AFTER YOU FIRST DISCOVER SUCH DEFECT. IN NO EVENT MAY ANY ACTION BASED UPON ANY DEFECT IN THIS SURVEY BE COMMENCED MORE THAN TEN YEARS FROM THE DATE ON THE CERTIFICATION SHOWN HEREON.

NOTE: MAGNETIC NORTH IS CURRENT AS OF 6/6/2017. MAGNETIC NORTH CHANGES WEST 0°06' PER YEAR.

0 1000' 2000'

SCALE: 1" = 1000'

## WELL PAD - VERDE 13-13HZ

**VERDE 13-9HZ**  
**WELL LOCATION CERTIFICATE**  
 903' FNL & 2572' FWL NENW (SURFACE)  
 370' FNL & 2633' FWL NENW (HEEL)  
 LOCATED IN SECTION 13  
 53' FNL & 2613' FWL LOT 2 (NENW) (BOTTOM)  
 LOCATED IN SECTION 1  
 T1N, R66W, 6TH P.M.  
 WELD COUNTY, COLORADO

**Kerr-McGee Oil &  
 Gas Onshore L.P.**  
 1099 18th Street  
 Denver, Colorado 80202



## CONSULTING, LLC

**SHERIDAN OFFICE**  
 1095 Saberton Avenue  
 Sheridan, Wyoming 82801  
 Phone 307-674-0609

**LOVELAND OFFICE**  
 1635 Foxtrail Drive, Suite 204  
 Loveland, Colorado 80538  
 Phone 970-776-4331

DRAFTED BY:	LMO	CHECKED BY:	RKF	SHEET NO:
DATE DRAFTED:	6/14/17	DATE SURVEYED:	5/11/17	3
REVISED:		FILE NAME:	16-161	3 OF 3