

LEGEND:

 **PROPOSED LOCATION**



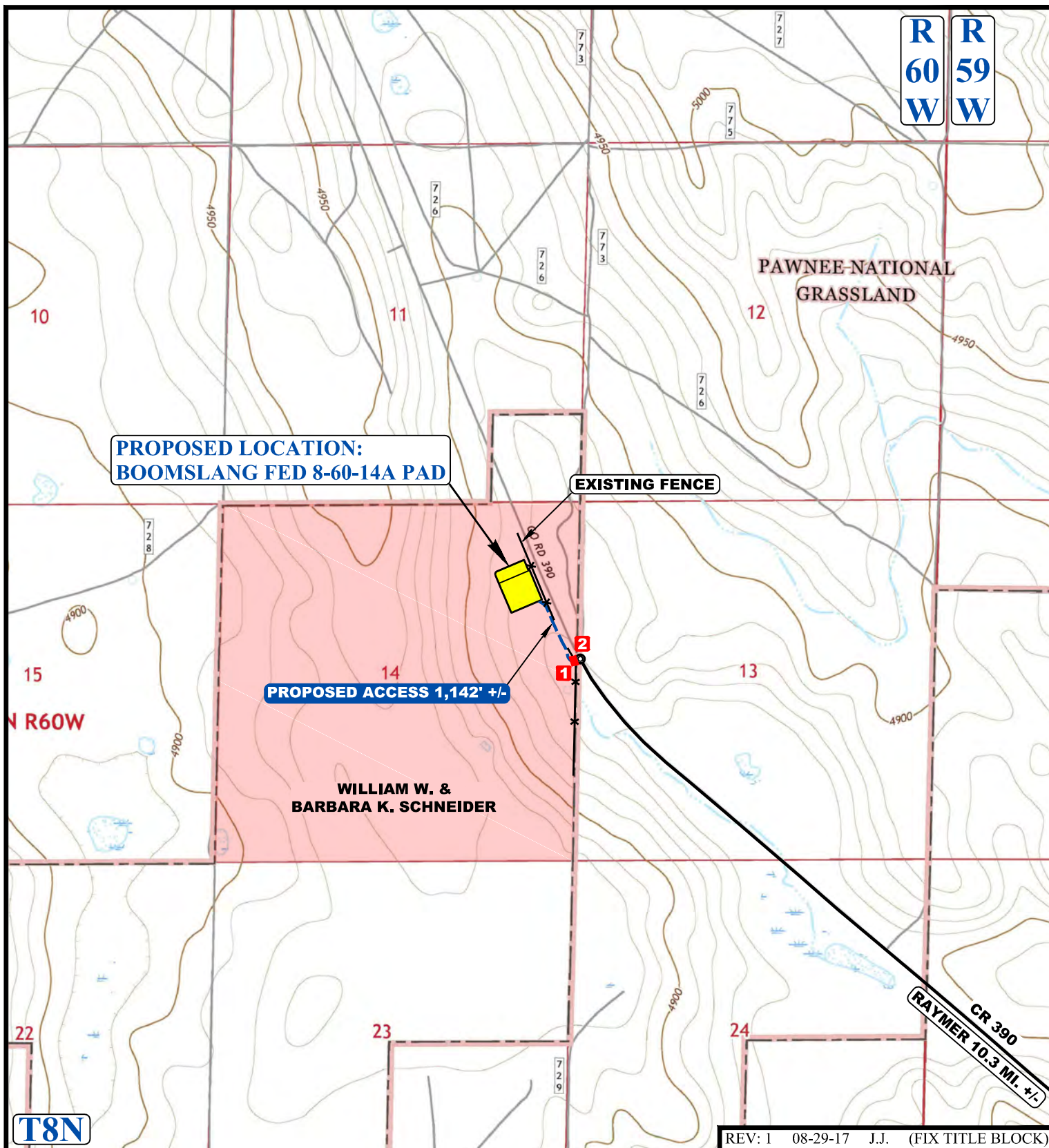
UELS, LLC
Corporate Office * 85 South 200 East
Vernal, UT 84078 * (435) 789-1017



BISON OIL & GAS II

BOOMSLANG FED 8-60-14A PAD
E 1/2 NE 1/4, SECTION 14, T8N, R60W, 6th P.M.
WELD COUNTY, COLORADO

SURVEYED BY	J.C.	08-11-17	SCALE
DRAWN BY	J.L.G.	08-15-17	1 : 100,000
ACCESS ROAD MAP			TOPO A



T8N

REV: 1 08-29-17 J.J. (FIX TITLE BLOCK)

NOTE: PARCEL DATA SHOWN HAS BEEN OBTAINED FROM VARIOUS SOURCES AND SHOULD BE USED FOR MAPPING, GRAPHIC AND PLANNING PURPOSES ONLY. NO WARRANTY IS MADE BY UINTAH ENGINEERING AND LAND SURVEYING (UELS) FOR ACCURACY OF THE PARCEL DATA.

LEGEND:

- EXISTING ROAD
- PROPOSED ROAD
- 1 INSTALL CATTLE GUARD
- 2 INSTALL 24" CULVERT



BISON OIL & GAS II

BOOMSLANG FED 8-60-14A PAD
E 1/2 NE 1/4, SECTION 14, T8N, R60W, 6th P.M.
WELD COUNTY, COLORADO



UELS, LLC
 Corporate Office * 85 South 200 East
 Vernal, UT 84078 * (435) 789-1017

SURVEYED BY	J.C.	08-11-17	SCALE
DRAWN BY	J.L.G.	08-15-17	1 : 24,000
ACCESS ROAD MAP			TOPO B