

**BISON OIL & GAS II, LLC**

**WELD COUNTY, COLORADO (NAD 83)**

**NE SE SEC. 14 T8N R60W 6th P.M.**

**BOOMSLANG FED 8-60 14B-13-18-3**

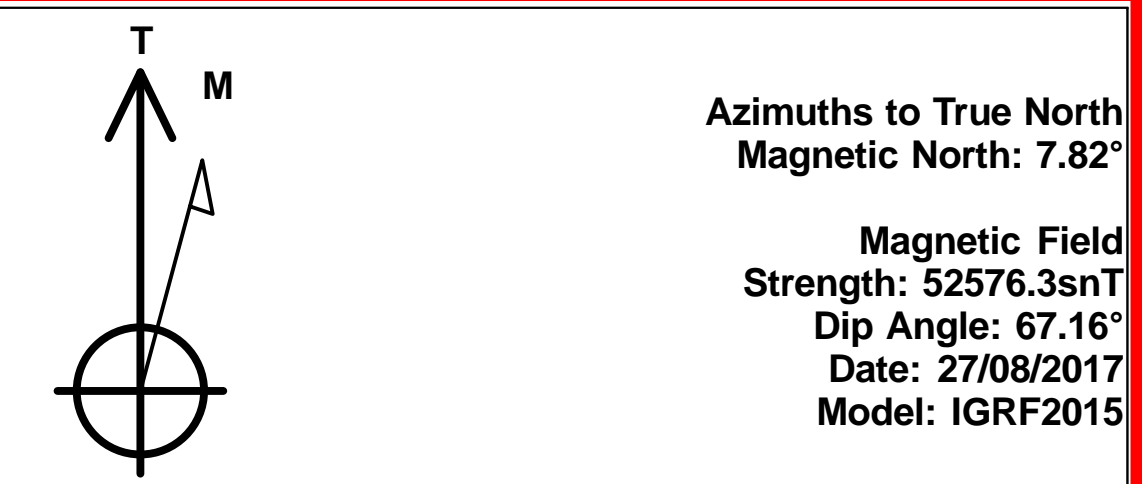
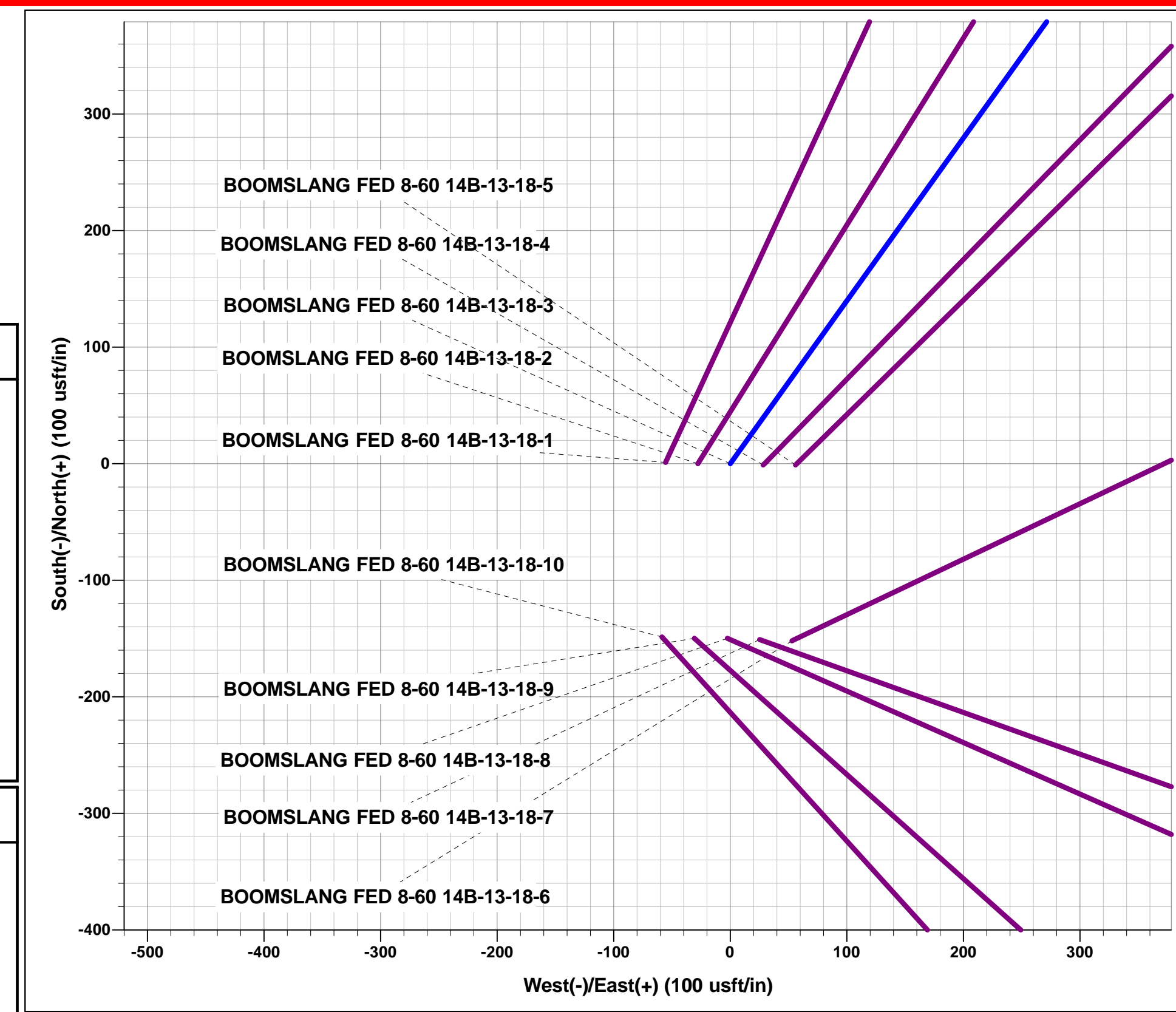
**ORIGINAL WELLBORE**

**27 August, 2017**

**Plan: PROPOSAL #1**



Project: WELD COUNTY, COLORADO (NAD 83)  
 Site: NE SE SEC. 14 T8N R60W 6th P.M.  
 Well: BOOMSLANG FED 8-60 14B-13-18-3  
 Wellbore: ORIGINAL WELLBORE  
 Design: PROPOSAL #1

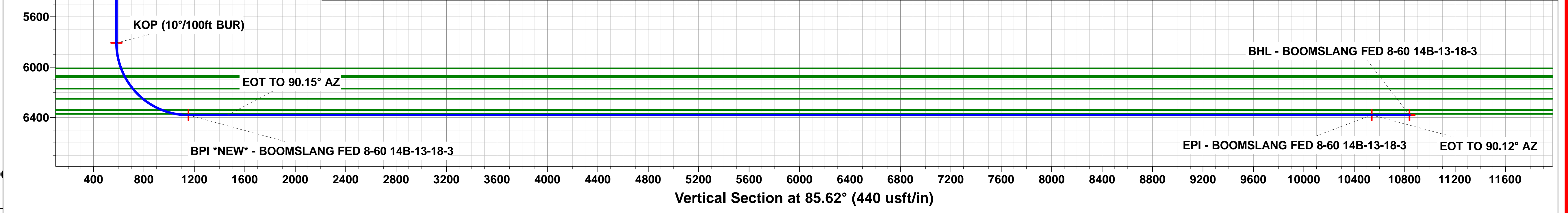
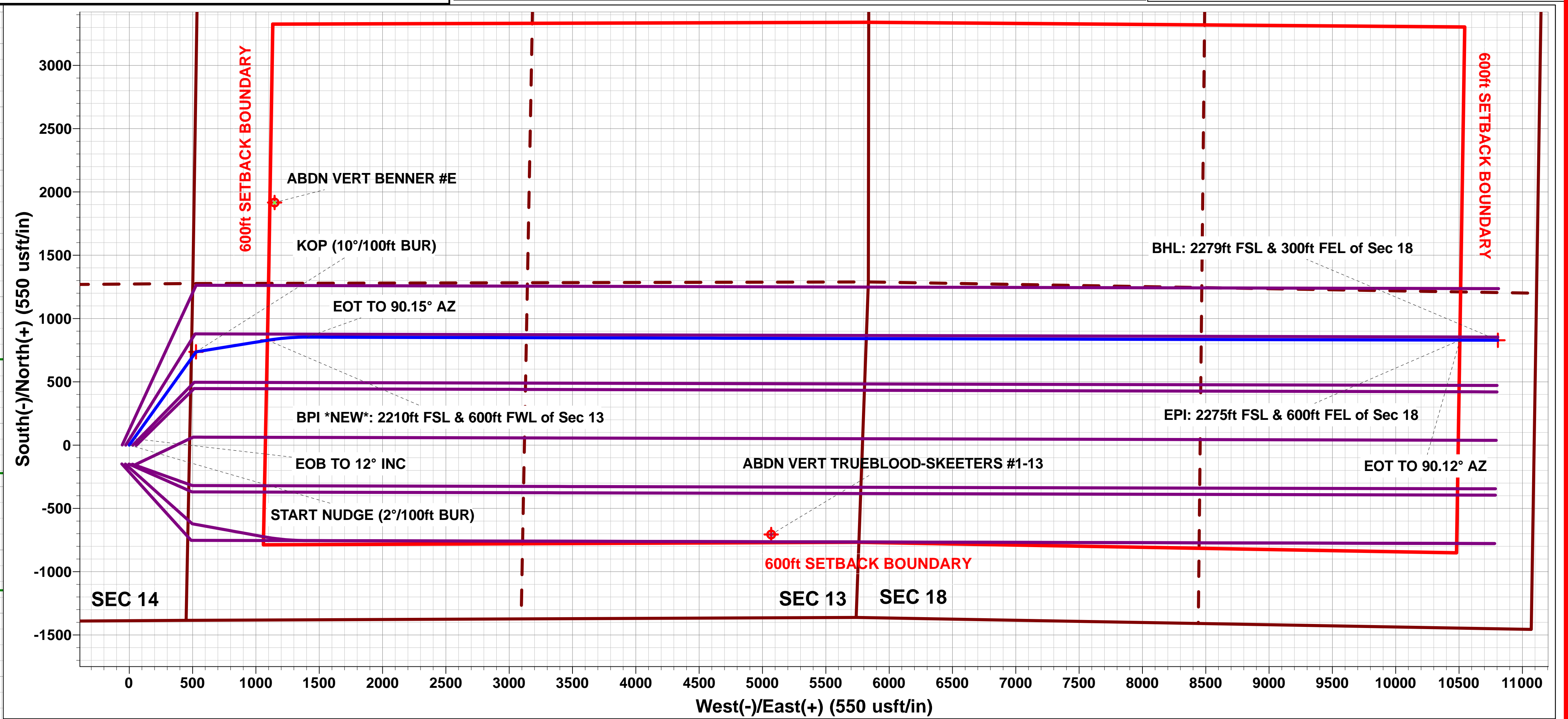
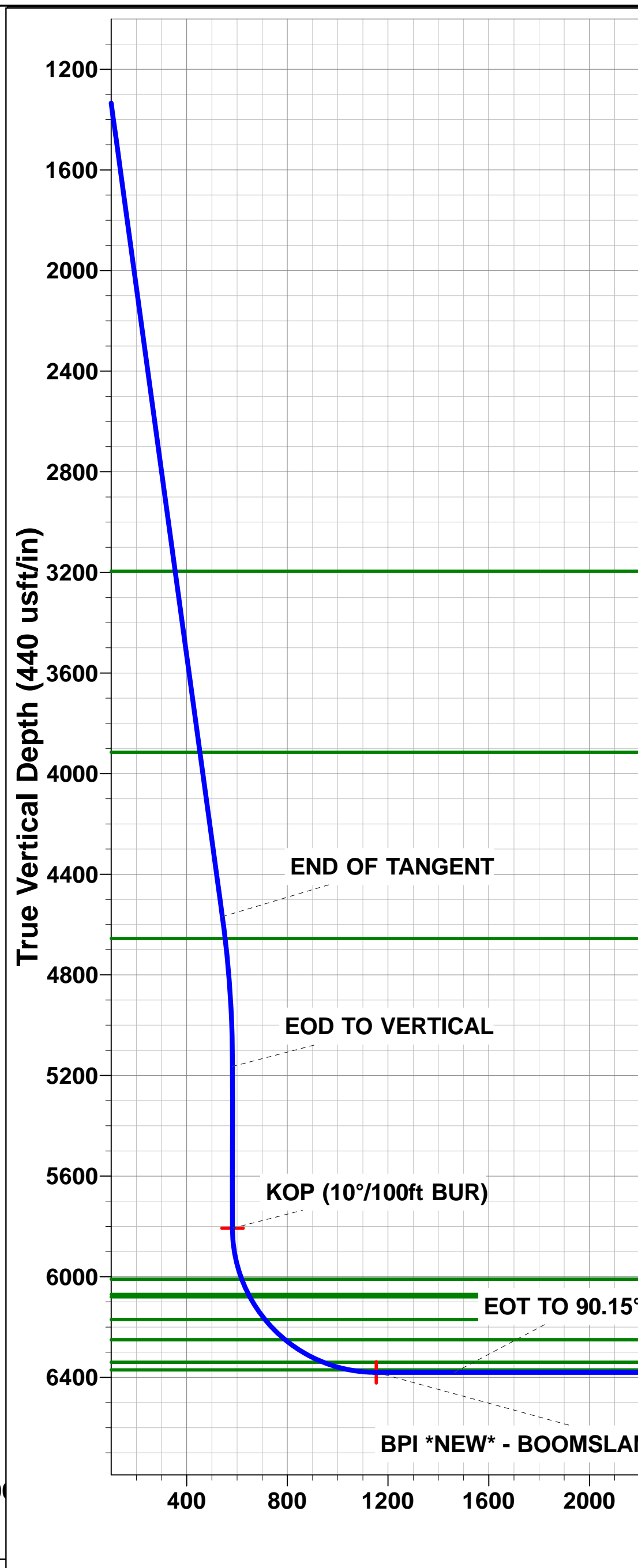
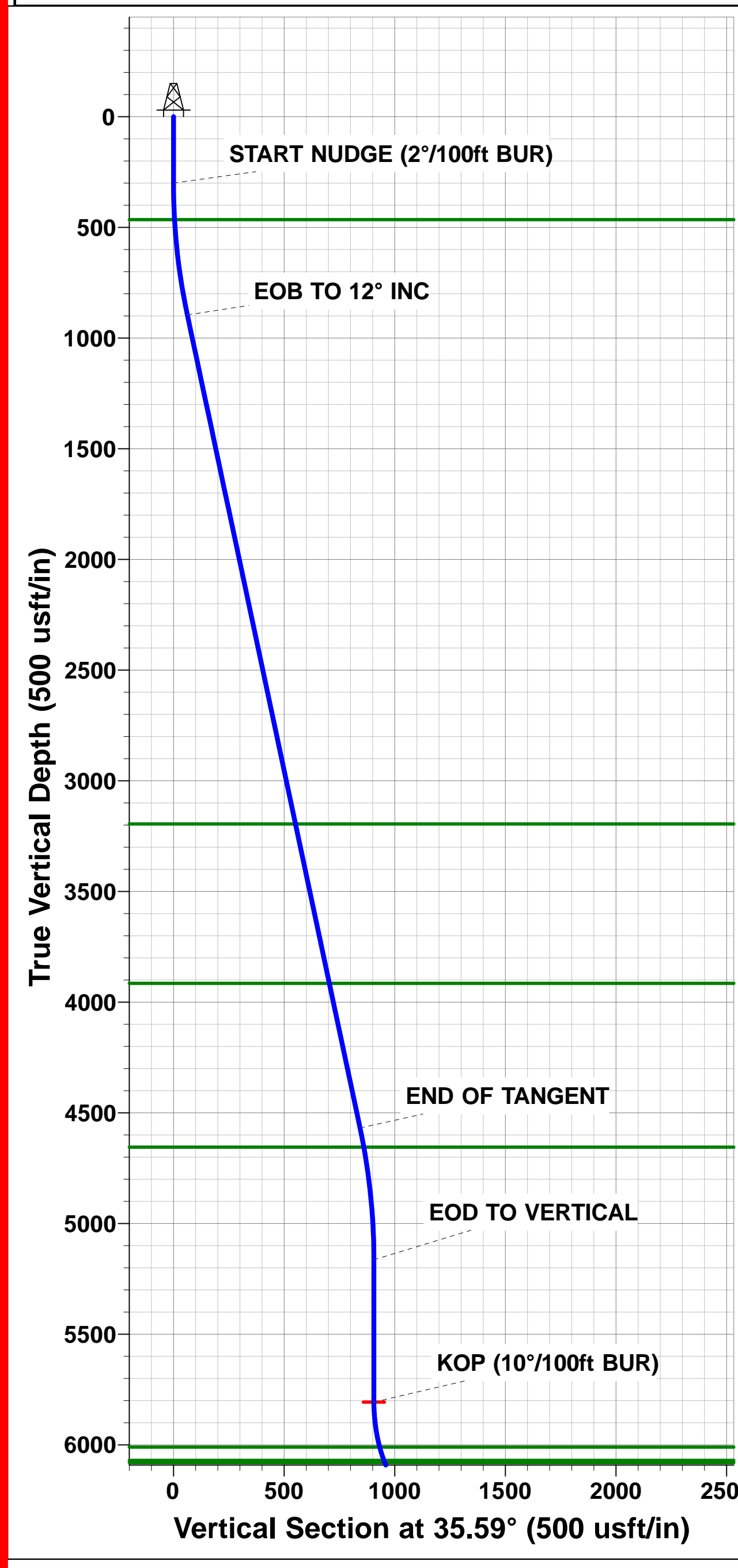


ANNOTATIONS									
TVD	MD	Inc	Azi	+N/-S	+E/-W	Vsect	Dep	Annotation	
0.0	0.0	0.00	0.00	0.0	0.0	0.0	0.0	SHL: 1388ft FSL & 476ft FEL of Sec 14	
300.0	300.0	0.00	0.00	0.0	0.0	0.0	0.0	START NUDGE (2°/100ft BUR)	
895.6	900.0	12.00	35.59	50.9	36.4	40.2	62.6	EOB TO 12° INC	
4568.5	4655.0	12.00	35.59	685.8	490.8	541.7	843.3	END OF TANGENT	
5164.2	5255.0	0.00	0.00	736.7	527.2	582.0	905.9	EOD TO VERTICAL	
5807.2	5898.0	0.00	0.00	736.7	527.2	582.0	905.9	KOP (10°/100ft BUR)	
6380.2	6798.1	90.00	80.80	828.3	1092.8	1152.9	1478.9	BPI *NEW*: 2210ft FSL & 600ft FWL of Sec 13	
6380.2	7109.7	90.00	90.15	852.9	1403.2	1464.2	1790.6	EOT TO 90.15° AZ	
6380.2	16212.2	90.00	90.15	828.9	10505.6	10538.2	10893.0	EPI: 2275ft FSL & 600ft FEL of Sec 18	
6380.2	16213.2	90.00	90.12	828.9	10506.6	10539.2	10894.0	EOT TO 90.12° AZ	
6380.2	16512.9	90.00	90.11	828.3	10806.4	10838.0	11193.8	BHL: 2279ft FSL & 300ft FEL of Sec 18	

FORMATION TOP DETAILS		
TVDPath	MDPath	Formation
465.2	465.3	PIERRE SH (BASE FOX HILLS)
3195.2	3251.0	PARKMAN
3915.2	3987.0	SUSSEX
4655.2	4743.3	SHANNON
6010.2	6105.5	SHARON SPRINGS SHALE
6070.2	6171.2	NIORARA FORMATION
6080.2	6182.6	NIORARA A CHALK
6170.2	6291.1	NIORARA B CHALK
6250.2	6404.4	NIORARA C CHALK
6340.2	6582.7	FT HAYS
6370.2	6690.9	CODELL

WELLBORE TARGET DETAILS (LAT/LONG)						
Name	TVD	+N/-S	+E/-W	Latitude	Longitude	
KOP - BOOMSLANG FED 8-60 14B-13-18-3	5807.2	736.7	527.2	40.661097	-104.048358	
BPI *NEW* - BOOMSLANG FED 8-60 14B-13-18-3	6380.2	828.3	1092.8	40.661348	-104.046319	
EPI - BOOMSLANG FED 8-60 14B-13-18-3	6380.2	828.9	10505.6	40.661344	-104.012392	
BHL - BOOMSLANG FED 8-60 14B-13-18-3	6380.2	828.3	10806.4	40.661342	-104.011308	

PROPOSED LOCAL COORDINATES:  
 SHL: 1388ft FSL & 476ft FEL of Sec 14  
 BEGIN PROD INT \*NEW\*: 2210ft FSL & 600ft FWL of Sec 13  
 END PROD INTERVAL: 2275ft FSL & 600ft FEL of Sec 18  
 BHL: 2279ft FSL & 300ft FEL of Sec 18



Planning Report



<b>Database:</b>	EDM 5000.1 Single User Db	<b>Local Co-ordinate Reference:</b>	Well BOOMSLANG FED 8-60 14B-13-18-3
<b>Company:</b>	BISON OIL & GAS II, LLC	<b>TVD Reference:</b>	KB-EST @ 4915.2usft (Original Well Elev)
<b>Project:</b>	WELD COUNTY, COLORADO (NAD 83)	<b>MD Reference:</b>	KB-EST @ 4915.2usft (Original Well Elev)
<b>Site:</b>	NE SE SEC. 14 T8N R60W 6th P.M.	<b>North Reference:</b>	True
<b>Well:</b>	BOOMSLANG FED 8-60 14B-13-18-3	<b>Survey Calculation Method:</b>	Minimum Curvature
<b>Wellbore:</b>	ORIGINAL WELLBORE		
<b>Design:</b>	PROPOSAL #1		

<b>Project</b>	WELD COUNTY, COLORADO (NAD 83)		
<b>Map System:</b>	US State Plane 1983	<b>System Datum:</b>	Mean Sea Level
<b>Geo Datum:</b>	North American Datum 1983		
<b>Map Zone:</b>	Colorado Northern Zone		Using geodetic scale factor

<b>Site</b>	NE SE SEC. 14 T8N R60W 6th P.M.				
<b>Site Position:</b>		<b>Northing:</b>	1,486,231.70 usft	<b>Latitude:</b>	40.659078
<b>From:</b>	Lat/Long	<b>Easting:</b>	3,402,151.68 usft	<b>Longitude:</b>	-104.050458
<b>Position Uncertainty:</b>	0.0 usft	<b>Slot Radius:</b>	1.10000ft	<b>Grid Convergence:</b>	0.94 °

<b>Well</b>	BOOMSLANG FED 8-60 14B-13-18-3					
<b>Well Position</b>	<b>+N-S</b>	-1.1 usft	<b>Northing:</b>	1,486,231.49 usft	<b>Latitude:</b>	40.659075
	<b>+E-W</b>	55.5 usft	<b>Easting:</b>	3,402,207.18 usft	<b>Longitude:</b>	-104.050258
<b>Position Uncertainty</b>		0.0 usft	<b>Wellhead Elevation:</b>	usft	<b>Ground Level:</b>	4,890.2 usft

<b>Wellbore</b>	ORIGINAL WELLBORE				
<b>Magnetics</b>	<b>Model Name</b>	<b>Sample Date</b>	<b>Declination (°)</b>	<b>Dip Angle (°)</b>	<b>Field Strength (nT)</b>
	IGRF2015	27/08/2017	7.82	67.16	52,576

<b>Design</b>	PROPOSAL #1			
<b>Audit Notes:</b>				
<b>Version:</b>	<b>Phase:</b>	PROTOTYPE	<b>Tie On Depth:</b>	0.0
<b>Vertical Section:</b>	<b>Depth From (TVD) (usft)</b>	<b>+N-S (usft)</b>	<b>+E-W (usft)</b>	<b>Direction (°)</b>
	6,380.2	0.0	0.0	85.62

<b>Plan Sections</b>											
MD (usft)	Inc (°)	Azi (°)	Vertical Depth	SS (usft)	+N-S (usft)	+E-W (usft)	Dogleg Rate (°/100usft)	Build Rate (°/100usft)	Turn Rate (°/100usft)	TFO (°)	Target
0.0	0.00	0.00	0.0	-4,915.2	0.0	0.0	0.00	0.00	0.00	0.00	
300.0	0.00	0.00	300.0	-4,615.2	0.0	0.0	0.00	0.00	0.00	0.00	
900.0	12.00	35.59	895.6	-4,019.6	50.9	36.4	2.00	2.00	0.00	35.59	
4,655.0	12.00	35.59	4,568.5	-346.7	685.8	490.8	0.00	0.00	0.00	0.00	
5,255.0	0.00	0.00	5,164.2	249.0	736.7	527.2	2.00	-2.00	0.00	180.00	
5,898.0	0.00	0.00	5,807.2	892.0	736.7	527.2	0.00	0.00	0.00	0.00	KOP - BOOMSLAN
6,798.1	90.00	80.80	6,380.2	1,465.0	828.3	1,092.8	10.00	10.00	8.98	80.80	BPI *NEW* - BOOM
7,109.7	90.00	90.15	6,380.2	1,465.0	852.9	1,403.2	3.00	0.00	3.00	90.01	
16,212.2	90.00	90.15	6,380.2	1,465.0	828.9	10,505.6	0.00	0.00	0.00	0.00	EPI - BOOMSLANC
16,213.2	90.00	90.12	6,380.2	1,465.0	828.9	10,506.6	3.00	0.00	-3.00	-90.00	
16,512.9	90.00	90.11	6,380.2	1,465.0	828.3	10,806.4	0.00	0.00	0.00	-89.84	BHL - BOOMSLAN

Planning Report



<b>Database:</b>	EDM 5000.1 Single User Db	<b>Local Co-ordinate Reference:</b>	Well BOOMSLANG FED 8-60 14B-13-18-3
<b>Company:</b>	BISON OIL & GAS II, LLC	<b>TVD Reference:</b>	KB-EST @ 4915.2usft (Original Well Elev)
<b>Project:</b>	WELD COUNTY, COLORADO (NAD 83)	<b>MD Reference:</b>	KB-EST @ 4915.2usft (Original Well Elev)
<b>Site:</b>	NE SE SEC. 14 T8N R60W 6th P.M.	<b>North Reference:</b>	True
<b>Well:</b>	BOOMSLANG FED 8-60 14B-13-18-3	<b>Survey Calculation Method:</b>	Minimum Curvature
<b>Wellbore:</b>	ORIGINAL WELLBORE		
<b>Design:</b>	PROPOSAL #1		

Planned Survey

MD (usft)	Inc (°)	Azi (°)	TVD (usft)	SS (usft)	+N/-S (usft)	+E/-W (usft)	Vertical Section (usft)	Dogleg Rate (°/100usft)	Build Rate (°/100usft)	Turn Rate (°/100usft)
<b>SHL: 1388ft FSL &amp; 476ft FEL of Sec 14</b>										
0.0	0.00	0.00	0.0	4,915.20	0.0	0.0	0.0	0.00	0.00	0.00
100.0	0.00	0.00	100.0	4,815.20	0.0	0.0	0.0	0.00	0.00	0.00
200.0	0.00	0.00	200.0	4,715.20	0.0	0.0	0.0	0.00	0.00	0.00
<b>START NUDGE (2°/100ft BUR)</b>										
300.0	0.00	0.00	300.0	4,615.20	0.0	0.0	0.0	0.00	0.00	0.00
400.0	2.00	35.59	400.0	4,515.22	1.4	1.0	1.1	2.00	2.00	0.00
<b>PIERRE SHALE (BASE FOX HILLS)</b>										
465.3	3.31	35.59	465.2	4,450.00	3.9	2.8	3.1	2.00	2.00	0.00
500.0	4.00	35.59	499.8	4,415.36	5.7	4.1	4.5	2.00	2.00	0.00
600.0	6.00	35.59	599.5	4,315.75	12.8	9.1	10.1	2.00	2.00	0.00
700.0	8.00	35.59	698.7	4,216.50	22.7	16.2	17.9	2.00	2.00	0.00
800.0	10.00	35.59	797.5	4,117.73	35.4	25.3	28.0	2.00	2.00	0.00
<b>EOB TO 12° INC</b>										
900.0	12.00	35.59	895.6	4,019.58	50.9	36.4	40.2	2.00	2.00	0.00
1,000.0	12.00	35.59	993.4	3,921.76	67.8	48.5	53.6	0.00	0.00	0.00
1,100.0	12.00	35.59	1,091.3	3,823.95	84.7	60.6	66.9	0.00	0.00	0.00
1,200.0	12.00	35.59	1,189.1	3,726.13	101.6	72.7	80.3	0.00	0.00	0.00
1,300.0	12.00	35.59	1,286.9	3,628.32	118.5	84.8	93.6	0.00	0.00	0.00
1,400.0	12.00	35.59	1,384.7	3,530.50	135.4	96.9	107.0	0.00	0.00	0.00
1,500.0	12.00	35.59	1,482.5	3,432.69	152.4	109.0	120.4	0.00	0.00	0.00
1,600.0	12.00	35.59	1,580.3	3,334.87	169.3	121.1	133.7	0.00	0.00	0.00
1,700.0	12.00	35.59	1,678.1	3,237.06	186.2	133.2	147.1	0.00	0.00	0.00
1,800.0	12.00	35.59	1,776.0	3,139.24	203.1	145.3	160.4	0.00	0.00	0.00
1,900.0	12.00	35.59	1,873.8	3,041.43	220.0	157.4	173.8	0.00	0.00	0.00
2,000.0	12.00	35.59	1,971.6	2,943.61	236.9	169.5	187.1	0.00	0.00	0.00
2,100.0	12.00	35.59	2,069.4	2,845.80	253.8	181.6	200.5	0.00	0.00	0.00
2,200.0	12.00	35.59	2,167.2	2,747.98	270.7	193.7	213.8	0.00	0.00	0.00
2,300.0	12.00	35.59	2,265.0	2,650.17	287.6	205.8	227.2	0.00	0.00	0.00
2,400.0	12.00	35.59	2,362.8	2,552.36	304.5	217.9	240.6	0.00	0.00	0.00
2,500.0	12.00	35.59	2,460.7	2,454.54	321.4	230.0	253.9	0.00	0.00	0.00
2,600.0	12.00	35.59	2,558.5	2,356.73	338.3	242.1	267.3	0.00	0.00	0.00
2,700.0	12.00	35.59	2,656.3	2,258.91	355.2	254.2	280.6	0.00	0.00	0.00
2,800.0	12.00	35.59	2,754.1	2,161.10	372.2	266.3	294.0	0.00	0.00	0.00
2,900.0	12.00	35.59	2,851.9	2,063.28	389.1	278.4	307.3	0.00	0.00	0.00
3,000.0	12.00	35.59	2,949.7	1,965.47	406.0	290.5	320.7	0.00	0.00	0.00
3,100.0	12.00	35.59	3,047.5	1,867.65	422.9	302.6	334.1	0.00	0.00	0.00
3,200.0	12.00	35.59	3,145.4	1,769.84	439.8	314.7	347.4	0.00	0.00	0.00
<b>PARKMAN</b>										
3,251.0	12.00	35.59	3,195.2	1,720.00	448.4	320.9	354.2	0.00	0.00	0.00
3,300.0	12.00	35.59	3,243.2	1,672.02	456.7	326.8	360.8	0.00	0.00	0.00
3,400.0	12.00	35.59	3,341.0	1,574.21	473.6	338.9	374.1	0.00	0.00	0.00
3,500.0	12.00	35.59	3,438.8	1,476.39	490.5	351.0	387.5	0.00	0.00	0.00
3,600.0	12.00	35.59	3,536.6	1,378.58	507.4	363.1	400.8	0.00	0.00	0.00
3,700.0	12.00	35.59	3,634.4	1,280.76	524.3	375.2	414.2	0.00	0.00	0.00
3,800.0	12.00	35.59	3,732.3	1,182.95	541.2	387.3	427.6	0.00	0.00	0.00
3,900.0	12.00	35.59	3,830.1	1,085.13	558.1	399.4	440.9	0.00	0.00	0.00
<b>SUSSEX</b>										
3,987.0	12.00	35.59	3,915.2	1,000.00	572.9	410.0	452.5	0.00	0.00	0.00
4,000.0	12.00	35.59	3,927.9	987.32	575.1	411.5	454.3	0.00	0.00	0.00
4,100.0	12.00	35.59	4,025.7	889.50	592.0	423.6	467.6	0.00	0.00	0.00
4,200.0	12.00	35.59	4,123.5	791.69	608.9	435.7	481.0	0.00	0.00	0.00
4,300.0	12.00	35.59	4,221.3	693.88	625.8	447.8	494.3	0.00	0.00	0.00

<b>Database:</b>	EDM 5000.1 Single User Db	<b>Local Co-ordinate Reference:</b>	Well BOOMSLANG FED 8-60 14B-13-18-3
<b>Company:</b>	BISON OIL & GAS II, LLC	<b>TVD Reference:</b>	KB-EST @ 4915.2usft (Original Well Elev)
<b>Project:</b>	WELD COUNTY, COLORADO (NAD 83)	<b>MD Reference:</b>	KB-EST @ 4915.2usft (Original Well Elev)
<b>Site:</b>	NE SE SEC. 14 T8N R60W 6th P.M.	<b>North Reference:</b>	True
<b>Well:</b>	BOOMSLANG FED 8-60 14B-13-18-3	<b>Survey Calculation Method:</b>	Minimum Curvature
<b>Wellbore:</b>	ORIGINAL WELLBORE		
<b>Design:</b>	PROPOSAL #1		

**Planned Survey**

MD (usft)	Inc (°)	Azi (°)	TVD (usft)	SS (usft)	+N/-S (usft)	+E/-W (usft)	Vertical Section (usft)	Dogleg Rate (°/100usft)	Build Rate (°/100usft)	Turn Rate (°/100usft)
4,400.0	12.00	35.59	4,319.1	596.06	642.7	459.9	507.7	0.00	0.00	0.00
4,500.0	12.00	35.59	4,417.0	498.25	659.6	472.0	521.0	0.00	0.00	0.00
4,600.0	12.00	35.59	4,514.8	400.43	676.5	484.1	534.4	0.00	0.00	0.00
<b>END OF TANGENT</b>										
<b>4,655.0</b>	<b>12.00</b>	<b>35.59</b>	<b>4,568.5</b>	<b>346.66</b>	<b>685.8</b>	<b>490.8</b>	<b>541.7</b>	<b>0.00</b>	<b>0.00</b>	<b>0.00</b>
4,700.0	11.10	35.59	4,612.7	302.54	693.1	496.0	547.5	2.00	-2.00	0.00
<b>SHANNON</b>										
<b>4,743.3</b>	<b>10.23</b>	<b>35.59</b>	<b>4,655.2</b>	<b>260.00</b>	<b>699.6</b>	<b>500.7</b>	<b>552.7</b>	<b>2.00</b>	<b>-2.00</b>	<b>0.00</b>
4,800.0	9.10	35.59	4,711.1	204.10	707.4	506.2	558.8	2.00	-2.00	0.00
4,900.0	7.10	35.59	4,810.1	105.10	718.8	514.4	567.9	2.00	-2.00	0.00
5,000.0	5.10	35.59	4,909.5	5.67	727.5	520.6	574.7	2.00	-2.00	0.00
5,100.0	3.10	35.59	5,009.3	-94.07	733.3	524.8	579.3	2.00	-2.00	0.00
5,200.0	1.10	35.59	5,109.2	-193.99	736.3	526.9	581.6	2.00	-2.00	0.00
<b>EOD TO VERTICAL</b>										
<b>5,255.0</b>	<b>0.00</b>	<b>0.00</b>	<b>5,164.2</b>	<b>-248.96</b>	<b>736.7</b>	<b>527.2</b>	<b>582.0</b>	<b>2.00</b>	<b>-2.00</b>	<b>0.00</b>
5,300.0	0.00	0.00	5,209.2	-293.99	736.7	527.2	582.0	0.00	0.00	0.00
5,400.0	0.00	0.00	5,309.2	-393.99	736.7	527.2	582.0	0.00	0.00	0.00
5,500.0	0.00	0.00	5,409.2	-493.99	736.7	527.2	582.0	0.00	0.00	0.00
5,600.0	0.00	0.00	5,509.2	-593.99	736.7	527.2	582.0	0.00	0.00	0.00
5,700.0	0.00	0.00	5,609.2	-693.99	736.7	527.2	582.0	0.00	0.00	0.00
5,800.0	0.00	0.00	5,709.2	-793.99	736.7	527.2	582.0	0.00	0.00	0.00
<b>KOP (10°/100ft BUR)</b>										
<b>5,898.0</b>	<b>0.00</b>	<b>0.00</b>	<b>5,807.2</b>	<b>-892.00</b>	<b>736.7</b>	<b>527.2</b>	<b>582.0</b>	<b>0.00</b>	<b>0.00</b>	<b>0.00</b>
5,900.0	0.20	80.80	5,809.2	-893.99	736.7	527.2	582.0	10.00	10.00	0.00
6,000.0	10.20	80.80	5,908.7	-993.45	738.1	536.1	591.0	10.00	10.00	0.00
6,100.0	20.20	80.80	6,005.0	-1,089.83	742.3	562.0	617.1	10.00	10.00	0.00
<b>SHARON SPRINGS SHALE</b>										
<b>6,105.5</b>	<b>20.75</b>	<b>80.80</b>	<b>6,010.2</b>	<b>-1,095.00</b>	<b>742.6</b>	<b>563.9</b>	<b>619.0</b>	<b>10.00</b>	<b>10.00</b>	<b>0.00</b>
<b>NIOBRARA FORMATION</b>										
<b>6,171.2</b>	<b>27.32</b>	<b>80.80</b>	<b>6,070.2</b>	<b>-1,155.00</b>	<b>746.9</b>	<b>590.3</b>	<b>645.7</b>	<b>10.00</b>	<b>10.00</b>	<b>0.00</b>
<b>NIOBRARA A CHALK</b>										
<b>6,182.6</b>	<b>28.45</b>	<b>80.80</b>	<b>6,080.2</b>	<b>-1,165.00</b>	<b>747.8</b>	<b>595.5</b>	<b>650.9</b>	<b>10.00</b>	<b>10.00</b>	<b>0.00</b>
6,200.0	30.20	80.80	6,095.4	-1,180.20	749.1	604.0	659.4	10.00	10.00	0.00
<b>NIOBRARA B CHALK</b>										
<b>6,291.1</b>	<b>39.31</b>	<b>80.80</b>	<b>6,170.2</b>	<b>-1,255.00</b>	<b>757.4</b>	<b>655.2</b>	<b>711.2</b>	<b>10.00</b>	<b>10.00</b>	<b>0.00</b>
6,300.0	40.20	80.80	6,177.0	-1,261.82	758.3	660.8	716.8	10.00	10.00	0.00
6,400.0	50.20	80.80	6,247.4	-1,332.20	769.7	730.7	787.4	10.00	10.00	0.00
<b>NIOBRARA C CHALK</b>										
<b>6,404.4</b>	<b>50.64</b>	<b>80.80</b>	<b>6,250.2</b>	<b>-1,335.00</b>	<b>770.2</b>	<b>734.1</b>	<b>790.8</b>	<b>10.00</b>	<b>10.00</b>	<b>0.00</b>
6,500.0	60.19	80.80	6,304.4	-1,389.20	782.8	811.7	869.1	10.00	10.00	0.00
<b>FT HAYS</b>										
<b>6,582.7</b>	<b>68.46</b>	<b>80.80</b>	<b>6,340.2</b>	<b>-1,425.00</b>	<b>794.7</b>	<b>885.2</b>	<b>943.3</b>	<b>10.00</b>	<b>10.00</b>	<b>0.00</b>
6,600.0	70.19	80.80	6,346.3	-1,431.10	797.3	901.2	959.5	10.00	10.00	0.00
<b>CODELL</b>										
<b>6,690.9</b>	<b>79.28</b>	<b>80.80</b>	<b>6,370.2</b>	<b>-1,455.00</b>	<b>811.3</b>	<b>987.6</b>	<b>1,046.7</b>	<b>10.00</b>	<b>10.00</b>	<b>0.00</b>
6,700.0	80.19	80.80	6,371.8	-1,456.63	812.7	996.5	1,055.7	10.00	10.00	0.00
<b>BPI *NEW*: 2210ft FSL &amp; 600ft FWL of Sec 13</b>										
<b>6,798.1</b>	<b>90.00</b>	<b>80.80</b>	<b>6,380.2</b>	<b>-1,465.00</b>	<b>828.3</b>	<b>1,092.8</b>	<b>1,152.9</b>	<b>10.00</b>	<b>10.00</b>	<b>0.00</b>
6,800.0	90.00	80.86	6,380.2	-1,465.00	828.6	1,094.7	1,154.9	3.00	0.00	3.00
6,900.0	90.00	83.86	6,380.2	-1,465.00	841.9	1,193.8	1,254.7	3.00	0.00	3.00
7,000.0	90.00	86.86	6,380.2	-1,465.00	850.0	1,293.5	1,354.7	3.00	0.00	3.00
7,100.0	90.00	89.86	6,380.2	-1,465.00	852.9	1,393.4	1,454.5	3.00	0.00	3.00

Planning Report



<b>Database:</b>	EDM 5000.1 Single User Db	<b>Local Co-ordinate Reference:</b>	Well BOOMSLANG FED 8-60 14B-13-18-3
<b>Company:</b>	BISON OIL & GAS II, LLC	<b>TVD Reference:</b>	KB-EST @ 4915.2usft (Original Well Elev)
<b>Project:</b>	WELD COUNTY, COLORADO (NAD 83)	<b>MD Reference:</b>	KB-EST @ 4915.2usft (Original Well Elev)
<b>Site:</b>	NE SE SEC. 14 T8N R60W 6th P.M.	<b>North Reference:</b>	True
<b>Well:</b>	BOOMSLANG FED 8-60 14B-13-18-3	<b>Survey Calculation Method:</b>	Minimum Curvature
<b>Wellbore:</b>	ORIGINAL WELLBORE		
<b>Design:</b>	PROPOSAL #1		

Planned Survey										
MD (usft)	Inc (°)	Azi (°)	TVD (usft)	SS (usft)	+N/-S (usft)	+E/-W (usft)	Vertical Section (usft)	Dogleg Rate (°/100usft)	Build Rate (°/100usft)	Turn Rate (°/100usft)
<b>EOT TO 90.15° AZ</b>										
7,109.7	90.00	90.15	6,380.2	-1,465.00	852.9	1,403.2	1,464.2	3.00	0.00	3.00
7,200.0	90.00	90.15	6,380.2	-1,465.00	852.6	1,493.4	1,554.2	0.00	0.00	0.00
7,300.0	90.00	90.15	6,380.2	-1,465.00	852.4	1,593.4	1,653.9	0.00	0.00	0.00
7,400.0	90.00	90.15	6,380.2	-1,465.00	852.1	1,693.4	1,753.6	0.00	0.00	0.00
7,500.0	90.00	90.15	6,380.2	-1,465.00	851.8	1,793.4	1,853.3	0.00	0.00	0.00
7,600.0	90.00	90.15	6,380.2	-1,465.00	851.6	1,893.4	1,953.0	0.00	0.00	0.00
7,700.0	90.00	90.15	6,380.2	-1,465.00	851.3	1,993.4	2,052.7	0.00	0.00	0.00
7,800.0	90.00	90.15	6,380.2	-1,465.00	851.0	2,093.4	2,152.4	0.00	0.00	0.00
7,900.0	90.00	90.15	6,380.2	-1,465.00	850.8	2,193.4	2,252.0	0.00	0.00	0.00
8,000.0	90.00	90.15	6,380.2	-1,465.00	850.5	2,293.4	2,351.7	0.00	0.00	0.00
8,100.0	90.00	90.15	6,380.2	-1,465.00	850.3	2,393.4	2,451.4	0.00	0.00	0.00
8,200.0	90.00	90.15	6,380.2	-1,465.00	850.0	2,493.4	2,551.1	0.00	0.00	0.00
8,300.0	90.00	90.15	6,380.2	-1,465.00	849.7	2,593.4	2,650.8	0.00	0.00	0.00
8,400.0	90.00	90.15	6,380.2	-1,465.00	849.5	2,693.4	2,750.5	0.00	0.00	0.00
8,500.0	90.00	90.15	6,380.2	-1,465.00	849.2	2,793.4	2,850.2	0.00	0.00	0.00
8,600.0	90.00	90.15	6,380.2	-1,465.00	848.9	2,893.4	2,949.9	0.00	0.00	0.00
8,700.0	90.00	90.15	6,380.2	-1,465.00	848.7	2,993.4	3,049.5	0.00	0.00	0.00
8,800.0	90.00	90.15	6,380.2	-1,465.00	848.4	3,093.4	3,149.2	0.00	0.00	0.00
8,900.0	90.00	90.15	6,380.2	-1,465.00	848.1	3,193.4	3,248.9	0.00	0.00	0.00
9,000.0	90.00	90.15	6,380.2	-1,465.00	847.9	3,293.4	3,348.6	0.00	0.00	0.00
9,100.0	90.00	90.15	6,380.2	-1,465.00	847.6	3,393.4	3,448.3	0.00	0.00	0.00
9,200.0	90.00	90.15	6,380.2	-1,465.00	847.4	3,493.4	3,548.0	0.00	0.00	0.00
9,300.0	90.00	90.15	6,380.2	-1,465.00	847.1	3,593.4	3,647.7	0.00	0.00	0.00
9,400.0	90.00	90.15	6,380.2	-1,465.00	846.8	3,693.4	3,747.4	0.00	0.00	0.00
9,500.0	90.00	90.15	6,380.2	-1,465.00	846.6	3,793.4	3,847.0	0.00	0.00	0.00
9,600.0	90.00	90.15	6,380.2	-1,465.00	846.3	3,893.4	3,946.7	0.00	0.00	0.00
9,700.0	90.00	90.15	6,380.2	-1,465.00	846.0	3,993.4	4,046.4	0.00	0.00	0.00
9,800.0	90.00	90.15	6,380.2	-1,465.00	845.8	4,093.4	4,146.1	0.00	0.00	0.00
9,900.0	90.00	90.15	6,380.2	-1,465.00	845.5	4,193.4	4,245.8	0.00	0.00	0.00
10,000.0	90.00	90.15	6,380.2	-1,465.00	845.3	4,293.4	4,345.5	0.00	0.00	0.00
10,100.0	90.00	90.15	6,380.2	-1,465.00	845.0	4,393.4	4,445.2	0.00	0.00	0.00
10,200.0	90.00	90.15	6,380.2	-1,465.00	844.7	4,493.4	4,544.8	0.00	0.00	0.00
10,300.0	90.00	90.15	6,380.2	-1,465.00	844.5	4,593.4	4,644.5	0.00	0.00	0.00
10,400.0	90.00	90.15	6,380.2	-1,465.00	844.2	4,693.4	4,744.2	0.00	0.00	0.00
10,500.0	90.00	90.15	6,380.2	-1,465.00	843.9	4,793.4	4,843.9	0.00	0.00	0.00
10,600.0	90.00	90.15	6,380.2	-1,465.00	843.7	4,893.4	4,943.6	0.00	0.00	0.00
10,700.0	90.00	90.15	6,380.2	-1,465.00	843.4	4,993.4	5,043.3	0.00	0.00	0.00
10,800.0	90.00	90.15	6,380.2	-1,465.00	843.2	5,093.4	5,143.0	0.00	0.00	0.00
10,900.0	90.00	90.15	6,380.2	-1,465.00	842.9	5,193.4	5,242.7	0.00	0.00	0.00
11,000.0	90.00	90.15	6,380.2	-1,465.00	842.6	5,293.4	5,342.3	0.00	0.00	0.00
11,100.0	90.00	90.15	6,380.2	-1,465.00	842.4	5,393.4	5,442.0	0.00	0.00	0.00
11,200.0	90.00	90.15	6,380.2	-1,465.00	842.1	5,493.4	5,541.7	0.00	0.00	0.00
11,300.0	90.00	90.15	6,380.2	-1,465.00	841.8	5,593.4	5,641.4	0.00	0.00	0.00
11,400.0	90.00	90.15	6,380.2	-1,465.00	841.6	5,693.4	5,741.1	0.00	0.00	0.00
11,500.0	90.00	90.15	6,380.2	-1,465.00	841.3	5,793.4	5,840.8	0.00	0.00	0.00
11,600.0	90.00	90.15	6,380.2	-1,465.00	841.0	5,893.4	5,940.5	0.00	0.00	0.00
11,700.0	90.00	90.15	6,380.2	-1,465.00	840.8	5,993.4	6,040.2	0.00	0.00	0.00
11,800.0	90.00	90.15	6,380.2	-1,465.00	840.5	6,093.4	6,139.8	0.00	0.00	0.00
11,900.0	90.00	90.15	6,380.2	-1,465.00	840.3	6,193.4	6,239.5	0.00	0.00	0.00
12,000.0	90.00	90.15	6,380.2	-1,465.00	840.0	6,293.4	6,339.2	0.00	0.00	0.00
12,100.0	90.00	90.15	6,380.2	-1,465.00	839.7	6,393.4	6,438.9	0.00	0.00	0.00
12,200.0	90.00	90.15	6,380.2	-1,465.00	839.5	6,493.4	6,538.6	0.00	0.00	0.00
12,300.0	90.00	90.15	6,380.2	-1,465.00	839.2	6,593.4	6,638.3	0.00	0.00	0.00

Planning Report



<b>Database:</b>	EDM 5000.1 Single User Db	<b>Local Co-ordinate Reference:</b>	Well BOOMSLANG FED 8-60 14B-13-18-3
<b>Company:</b>	BISON OIL & GAS II, LLC	<b>TVD Reference:</b>	KB-EST @ 4915.2usft (Original Well Elev)
<b>Project:</b>	WELD COUNTY, COLORADO (NAD 83)	<b>MD Reference:</b>	KB-EST @ 4915.2usft (Original Well Elev)
<b>Site:</b>	NE SE SEC. 14 T8N R60W 6th P.M.	<b>North Reference:</b>	True
<b>Well:</b>	BOOMSLANG FED 8-60 14B-13-18-3	<b>Survey Calculation Method:</b>	Minimum Curvature
<b>Wellbore:</b>	ORIGINAL WELLBORE		
<b>Design:</b>	PROPOSAL #1		

Planned Survey										
MD (usft)	Inc (°)	Azi (°)	TVD (usft)	SS (usft)	+N/-S (usft)	+E/-W (usft)	Vertical Section (usft)	Dogleg Rate (°/100usft)	Build Rate (°/100usft)	Turn Rate (°/100usft)
12,400.0	90.00	90.15	6,380.2	-1,465.00	838.9	6,693.4	6,738.0	0.00	0.00	0.00
12,500.0	90.00	90.15	6,380.2	-1,465.00	838.7	6,793.4	6,837.7	0.00	0.00	0.00
12,600.0	90.00	90.15	6,380.2	-1,465.00	838.4	6,893.4	6,937.3	0.00	0.00	0.00
12,700.0	90.00	90.15	6,380.2	-1,465.00	838.2	6,993.4	7,037.0	0.00	0.00	0.00
12,800.0	90.00	90.15	6,380.2	-1,465.00	837.9	7,093.4	7,136.7	0.00	0.00	0.00
12,900.0	90.00	90.15	6,380.2	-1,465.00	837.6	7,193.4	7,236.4	0.00	0.00	0.00
13,000.0	90.00	90.15	6,380.2	-1,465.00	837.4	7,293.4	7,336.1	0.00	0.00	0.00
13,100.0	90.00	90.15	6,380.2	-1,465.00	837.1	7,393.4	7,435.8	0.00	0.00	0.00
13,200.0	90.00	90.15	6,380.2	-1,465.00	836.8	7,493.4	7,535.5	0.00	0.00	0.00
13,300.0	90.00	90.15	6,380.2	-1,465.00	836.6	7,593.4	7,635.1	0.00	0.00	0.00
13,400.0	90.00	90.15	6,380.2	-1,465.00	836.3	7,693.4	7,734.8	0.00	0.00	0.00
13,500.0	90.00	90.15	6,380.2	-1,465.00	836.1	7,793.4	7,834.5	0.00	0.00	0.00
13,600.0	90.00	90.15	6,380.2	-1,465.00	835.8	7,893.4	7,934.2	0.00	0.00	0.00
13,700.0	90.00	90.15	6,380.2	-1,465.00	835.5	7,993.4	8,033.9	0.00	0.00	0.00
13,800.0	90.00	90.15	6,380.2	-1,465.00	835.3	8,093.4	8,133.6	0.00	0.00	0.00
13,900.0	90.00	90.15	6,380.2	-1,465.00	835.0	8,193.4	8,233.3	0.00	0.00	0.00
14,000.0	90.00	90.15	6,380.2	-1,465.00	834.7	8,293.4	8,333.0	0.00	0.00	0.00
14,100.0	90.00	90.15	6,380.2	-1,465.00	834.5	8,393.4	8,432.6	0.00	0.00	0.00
14,200.0	90.00	90.15	6,380.2	-1,465.00	834.2	8,493.4	8,532.3	0.00	0.00	0.00
14,300.0	90.00	90.15	6,380.2	-1,465.00	834.0	8,593.4	8,632.0	0.00	0.00	0.00
14,400.0	90.00	90.15	6,380.2	-1,465.00	833.7	8,693.4	8,731.7	0.00	0.00	0.00
14,500.0	90.00	90.15	6,380.2	-1,465.00	833.4	8,793.4	8,831.4	0.00	0.00	0.00
14,600.0	90.00	90.15	6,380.2	-1,465.00	833.2	8,893.4	8,931.1	0.00	0.00	0.00
14,700.0	90.00	90.15	6,380.2	-1,465.00	832.9	8,993.4	9,030.8	0.00	0.00	0.00
14,800.0	90.00	90.15	6,380.2	-1,465.00	832.6	9,093.4	9,130.5	0.00	0.00	0.00
14,900.0	90.00	90.15	6,380.2	-1,465.00	832.4	9,193.4	9,230.1	0.00	0.00	0.00
15,000.0	90.00	90.15	6,380.2	-1,465.00	832.1	9,293.4	9,329.8	0.00	0.00	0.00
15,100.0	90.00	90.15	6,380.2	-1,465.00	831.8	9,393.4	9,429.5	0.00	0.00	0.00
15,200.0	90.00	90.15	6,380.2	-1,465.00	831.6	9,493.4	9,529.2	0.00	0.00	0.00
15,300.0	90.00	90.15	6,380.2	-1,465.00	831.3	9,593.4	9,628.9	0.00	0.00	0.00
15,400.0	90.00	90.15	6,380.2	-1,465.00	831.1	9,693.4	9,728.6	0.00	0.00	0.00
15,500.0	90.00	90.15	6,380.2	-1,465.00	830.8	9,793.4	9,828.3	0.00	0.00	0.00
15,600.0	90.00	90.15	6,380.2	-1,465.00	830.5	9,893.4	9,927.9	0.00	0.00	0.00
15,700.0	90.00	90.15	6,380.2	-1,465.00	830.3	9,993.4	10,027.6	0.00	0.00	0.00
15,800.0	90.00	90.15	6,380.2	-1,465.00	830.0	10,093.4	10,127.3	0.00	0.00	0.00
15,900.0	90.00	90.15	6,380.2	-1,465.00	829.7	10,193.4	10,227.0	0.00	0.00	0.00
16,000.0	90.00	90.15	6,380.2	-1,465.00	829.5	10,293.4	10,326.7	0.00	0.00	0.00
16,100.0	90.00	90.15	6,380.2	-1,465.00	829.2	10,393.4	10,426.4	0.00	0.00	0.00
16,200.0	90.00	90.15	6,380.2	-1,465.00	829.0	10,493.4	10,526.1	0.00	0.00	0.00
<b>EPI: 2275ft FSL &amp; 600ft FEL of Sec 18</b>										
16,212.2	90.00	90.15	6,380.2	-1,465.00	828.9	10,505.6	10,538.2	0.00	0.00	0.00
<b>EOT TO 90.12° AZ</b>										
16,213.2	90.00	90.12	6,380.2	-1,465.00	828.9	10,506.6	10,539.2	3.00	0.00	-3.00
16,300.0	90.00	90.12	6,380.2	-1,465.00	828.7	10,593.4	10,625.8	0.00	0.00	0.00
16,400.0	90.00	90.11	6,380.2	-1,465.00	828.5	10,693.4	10,725.5	0.00	0.00	0.00
16,500.0	90.00	90.11	6,380.2	-1,465.00	828.3	10,793.4	10,825.1	0.00	0.00	0.00
<b>BHL: 2279ft FSL &amp; 300ft FEL of Sec 18</b>										
16,512.9	90.00	90.11	6,380.2	-1,465.00	828.3	10,806.4	10,838.0	0.00	0.00	0.00

<b>Database:</b>	EDM 5000.1 Single User Db	<b>Local Co-ordinate Reference:</b>	Well BOOMSLANG FED 8-60 14B-13-18-3
<b>Company:</b>	BISON OIL & GAS II, LLC	<b>TVD Reference:</b>	KB-EST @ 4915.2usft (Original Well Elev)
<b>Project:</b>	WELD COUNTY, COLORADO (NAD 83)	<b>MD Reference:</b>	KB-EST @ 4915.2usft (Original Well Elev)
<b>Site:</b>	NE SE SEC. 14 T8N R60W 6th P.M.	<b>North Reference:</b>	True
<b>Well:</b>	BOOMSLANG FED 8-60 14B-13-18-3	<b>Survey Calculation Method:</b>	Minimum Curvature
<b>Wellbore:</b>	ORIGINAL WELLBORE		
<b>Design:</b>	PROPOSAL #1		

Formations						
MD (usft)	TVD (usft)	Name	Lithology	Dip (°)	Dip Direction (°)	
465.3	465.2	PIERRE SHALE (BASE FOX HILLS				
3,251.0	3,195.2	PARKMAN				
3,987.0	3,915.2	SUSSEX				
4,743.3	4,655.2	SHANNON				
6,105.5	6,010.2	SHARON SPRINGS SHALE				
6,171.2	6,070.2	NIOBRARA FORMATION				
6,182.6	6,080.2	NIOBRARA A CHALK				
6,291.1	6,170.2	NIOBRARA B CHALK				
6,404.4	6,250.2	NIOBRARA C CHALK				
6,582.7	6,340.2	FT HAYS				
6,690.9	6,370.2	CODELL				

Plan Annotations				
MD (usft)	TVD (usft)	Local Coordinates		Comment
		+N/-S (usft)	+E/-W (usft)	
0.0	0.0	0.0	0.0	SHL: 1388ft FSL & 476ft FEL of Sec 14
300.0	300.0	0.0	0.0	START NUDGE (2°/100ft BUR)
900.0	895.6	50.9	36.4	EOB TO 12° INC
4,655.0	4,568.5	685.8	490.8	END OF TANGENT
5,255.0	5,164.2	736.7	527.2	EOD TO VERTICAL
5,898.0	5,807.2	736.7	527.2	KOP (10°/100ft BUR)
6,798.1	6,380.2	828.3	1,092.8	BPI *NEW*: 2210ft FSL & 600ft FWL of Sec 13
7,109.7	6,380.2	852.9	1,403.2	EOT TO 90.15° AZ
16,212.2	6,380.2	828.9	10,505.6	EPI: 2275ft FSL & 600ft FEL of Sec 18
16,213.2	6,380.2	828.9	10,506.6	EOT TO 90.12° AZ
16,512.9	6,380.2	828.3	10,806.4	BHL: 2279ft FSL & 300ft FEL of Sec 18