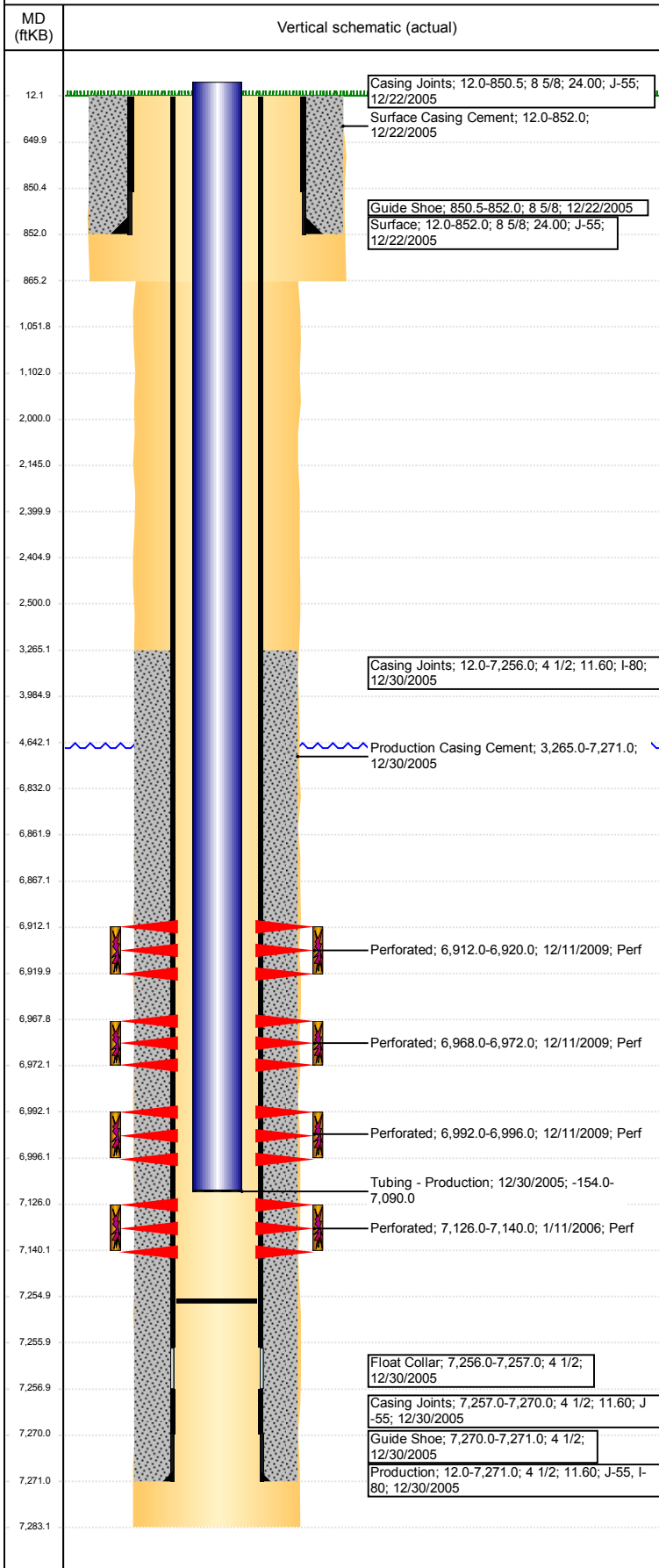


**Well Name: DECHANT 10-1**

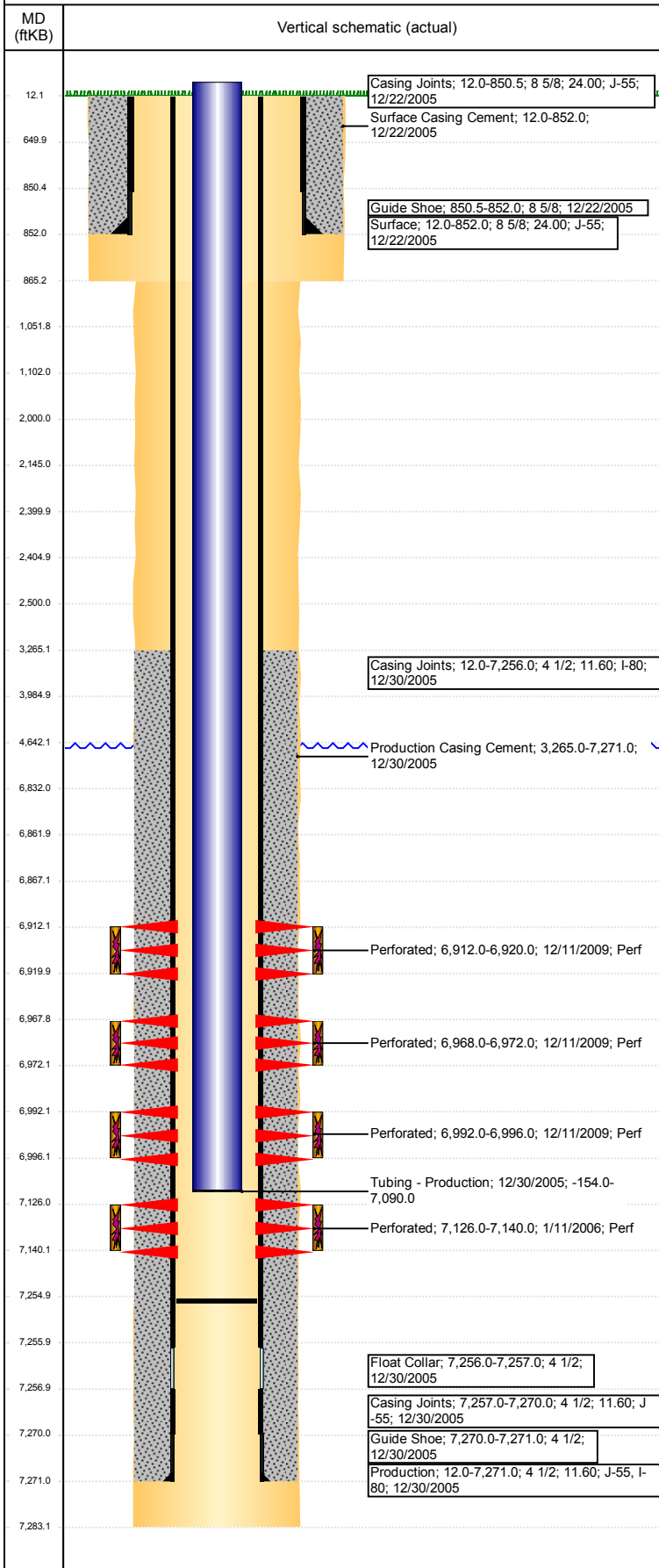
VERTICAL - ORIGINAL HOLE, 9/7/2017 8:51:21 AM



Well Header						
API 05-123-23400	Business Unit DJ BASIN		District 15		Well Config VERTICAL	
Original KB Elevation (ft) 4,845	KB - GL / MSL (ftKB) 12.00		Spud Date 12/21/2005		P & A Date	
Comment						
Directions To Well						
Congressional Location						
Quarter 3 NW	Quarter 4 SE	Section 1	Township 2	TwNshp N/S Dir N	Range 65	Range E/W Dir W
Bottom Hole Location						
North-South Distance (ft)		From N or S Line		East-West Distance (ft)		From E or W Line
Plug Back Total Depths						
Date	Depth (ftKB)	Method			Com	
12/30/2005	7,255.0	CASED HOLE LOG				
Wellbore Sections						
Section Des		Size (in)		Act Top, MD (ftKB)		Act Btm, MD (ftKB)
SURFACE		12 1/4		12		865
PRODUCTION		7 7/8		865		7,283
Zone Statuses						
Zone Name	Status Date	Status	Fluid Type	Job	Prod Method	
NIOBRARA B	1/18/2010	PR		DRILLING/CO...		
NIOBRARA B	3/31/2010	PR		RECOMPLETI...		
NIOBRARA C	1/18/2010	PR		DRILLING/CO...		
NIOBRARA C	3/31/2010	PR		RECOMPLETI...		
CODELL	1/27/2006	PR		DRILLING/CO...		
CODELL	2/24/2010	SI		RECOMPLETI...		
CODELL	2/24/2010	PR		RECOMPLETI...		
Casing Strings						
Surface, 852.0ftKB						
Casing Description	Run Date	OD (in)	Wt/Len (l...	Grade	Top, MD (ft...	MD (ftKB)
Surface	12/22/2005	8 5/8	24.00	J-55	12.0	852.0
Production, 7,271.0ftKB						
Casing Description	Run Date	OD (in)	Wt/Len (l...	Grade	Top, MD (ft...	MD (ftKB)
Production	12/30/2005	4 1/2	11.60	I-80	12.0	7,271.0
Cement						
Description				Top Depth (ftKB)		Bottom Depth (ftKB)
Surface Casing Cement				12.0		852.0
Description				Top Depth (ftKB)		Bottom Depth (ftKB)
Production Casing Cement				3,265.0		7,271.0
Description				Top Depth (ftKB)		Bottom Depth (ftKB)
Dump Bail				6,832.0		6,862.0
Description				Top Depth (ftKB)		Bottom Depth (ftKB)
Balance Plug				3,985.0		4,642.0
Description				Top Depth (ftKB)		Bottom Depth (ftKB)
Casing Repair Cement				2,000.0		2,500.0
Description				Top Depth (ftKB)		Bottom Depth (ftKB)
Cement Plug				2,145.0		2,400.0
Description				Top Depth (ftKB)		Bottom Depth (ftKB)
Cement Plug				2,405.0		2,500.0
Description				Top Depth (ftKB)		Bottom Depth (ftKB)
Cement Plug				1,052.0		1,102.0
Description				Top Depth (ftKB)		Bottom Depth (ftKB)
				852.0		865.0
Description				Top Depth (ftKB)		Bottom Depth (ftKB)
Cement Plug				865.0		1,052.0
Description				Top Depth (ftKB)		Bottom Depth (ftKB)
Cement Plug				650.0		852.0
Description				Top Depth (ftKB)		Bottom Depth (ftKB)
Shoe Plug				12.0		650.0
Tubing Strings						
Tubing Description	Run Date	String...	ID (in)	Wt (lb/ft)	Grade	Len (ft)
Tubing - Production	12/30/2005	2 3/8	1.87	4.70	N-80	7,244.00
Set De...						
Other In Hole						
Run Date	Des			OD (in)	Top (ftKB)	Btm (ftKB)
9/5/2017	Cement Retainer			4	2,400.0	2,405.0
	Cast Iron Bridge Plug			4	6,862.0	6,867.0

**Well Name: DECHANT 10-1**

VERTICAL - ORIGINAL HOLE, 9/7/2017 8:51:21 AM



Logs			
Date	Type	Top, MD (ftKB)	Btm, MD (ftKB)
12/30/2005	DIFL/DENS/GR/GRD/CAL	4,000.0	7,262.0
12/30/2005	INDUCTION	12.0	7,282.0
1/10/2006	CBL/CCL/GR	3,200.0	7,236.0

Perforation Data					
Linked Zone	Bnch/St g	Sum of Entered Shot Total	Top (ftKB)	Btm (ftKB)	Date
NIOBRARA B, ORIGINAL HOLE		0	2,500.00	2,500.00	9/5/2017
NIOBRARA B, ORIGINAL HOLE		32	6,912.00	6,920.00	12/11/2009
NIOBRARA B, ORIGINAL HOLE		16	6,968.00	6,972.00	12/11/2009
NIOBRARA C, ORIGINAL HOLE		16	6,992.00	6,996.00	12/11/2009
CODELL, ORIGINAL HOLE		56	7,126.00	7,140.00	1/11/2006
<b>Total (Sum)</b>		<b>120</b>			

Stimulation Intervals			
Start Date 1/13/2010		Primary Job Type RECOMPLETION	
Technical Result		Tech Result Details	Tech Result Note
Comment			
Start Date 1/13/2010		Primary Job Type RECOMPLETION	
Technical Result		Tech Result Details	Tech Result Note
Comment			
Start Date 1/13/2010		Primary Job Type RECOMPLETION	
Technical Result		Tech Result Details	Tech Result Note
Comment			
Start Date 1/11/2006		Primary Job Type DRILLING/COMPLETION - ORIGINAL	
Technical Result		Tech Result Details	Tech Result Note
Comment			