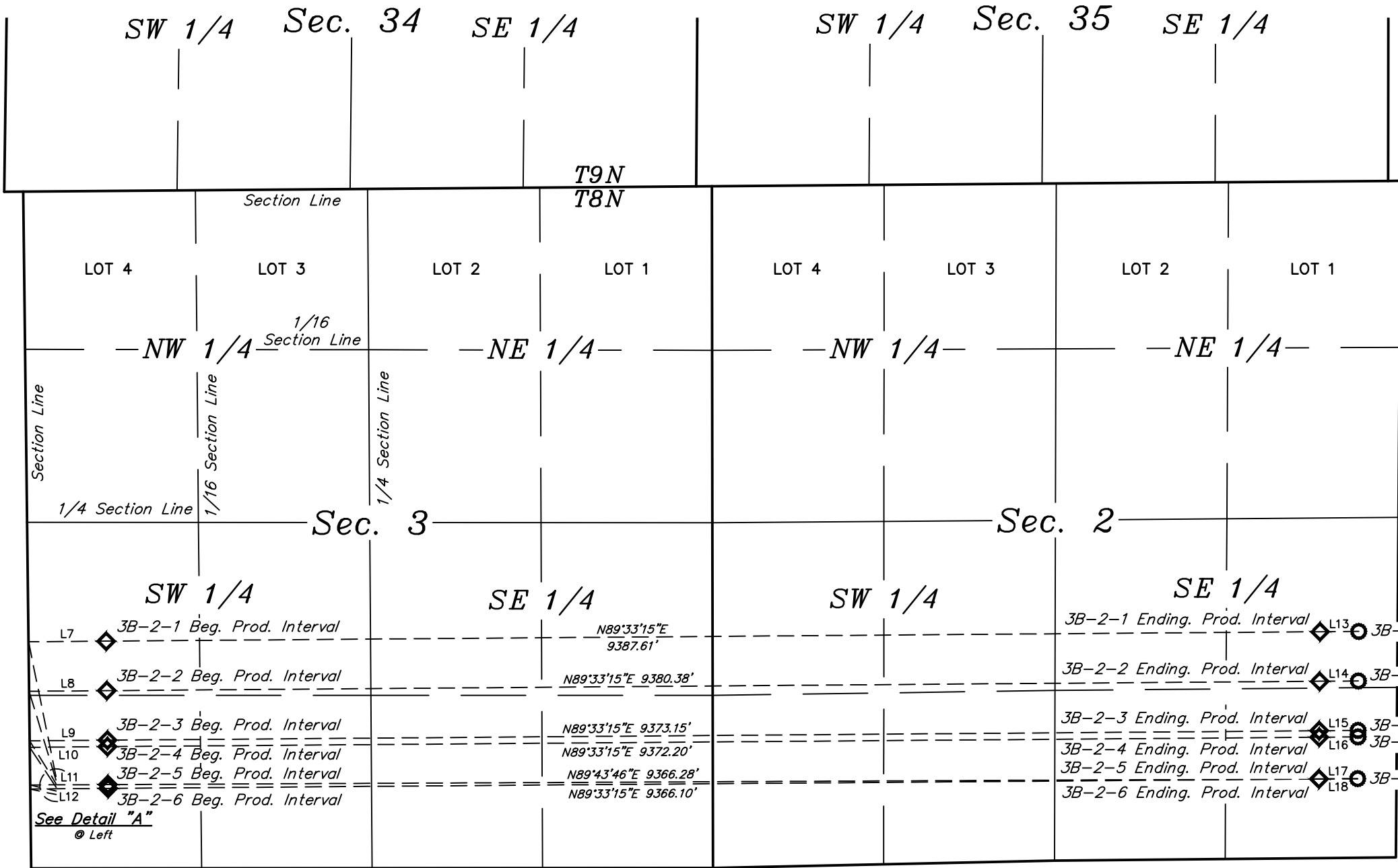


LINE TABLE		
LINE	DIRECTION	LENGTH
L1	N11°30'47"W	1063.38'
L2	N16°51'07"W	717.79'
L3	N31°34'01"W	389.59'
L4	N33°18'00"W	370.93'
L5	N76°59'15"W	205.76'
L6	N77°55'24"W	205.06'
L7	N89°33'15"E	600.00'
L8	N89°33'15"E	600.00'
L9	N89°33'15"E	600.00'
L10	N89°33'15"E	600.00'
L11	N89°43'46"E	600.01'
L12	N89°33'15"E	600.00'
L13	N89°33'15"E	300.03'
L14	N89°33'15"E	300.03'
L15	N89°33'15"E	300.03'
L16	N89°33'15"E	300.03'
L17	N89°43'46"E	300.02'
L18	N89°33'15"E	300.03'



LEGEND:

- = PROPOSED WELLHEAD.
- ◆ = PRODUCTION INTERVAL.
- = TARGET BOTTOM HOLE.

REV: 1 08-30-17 J.J. (BPI & EPI CHANGE)

BISON OIL & GAS II

SIEVERS 8-61 3B PAD
SW 1/4 SW 1/4, SECTION 3, T8N, R61W, 6th P.M.
WELD COUNTY, COLORADO



UELS, LLC
Corporate Office * 85 South 200 East
Vernal, UT 84078 * (435) 789-1017

SURVEYED BY	GREG WEIMER, G.B.	08-02-17	SCALE
DRAWN BY	J.J.	08-10-17	1" = 1000'
MULTI-Well PLAN		FIGURE #5	