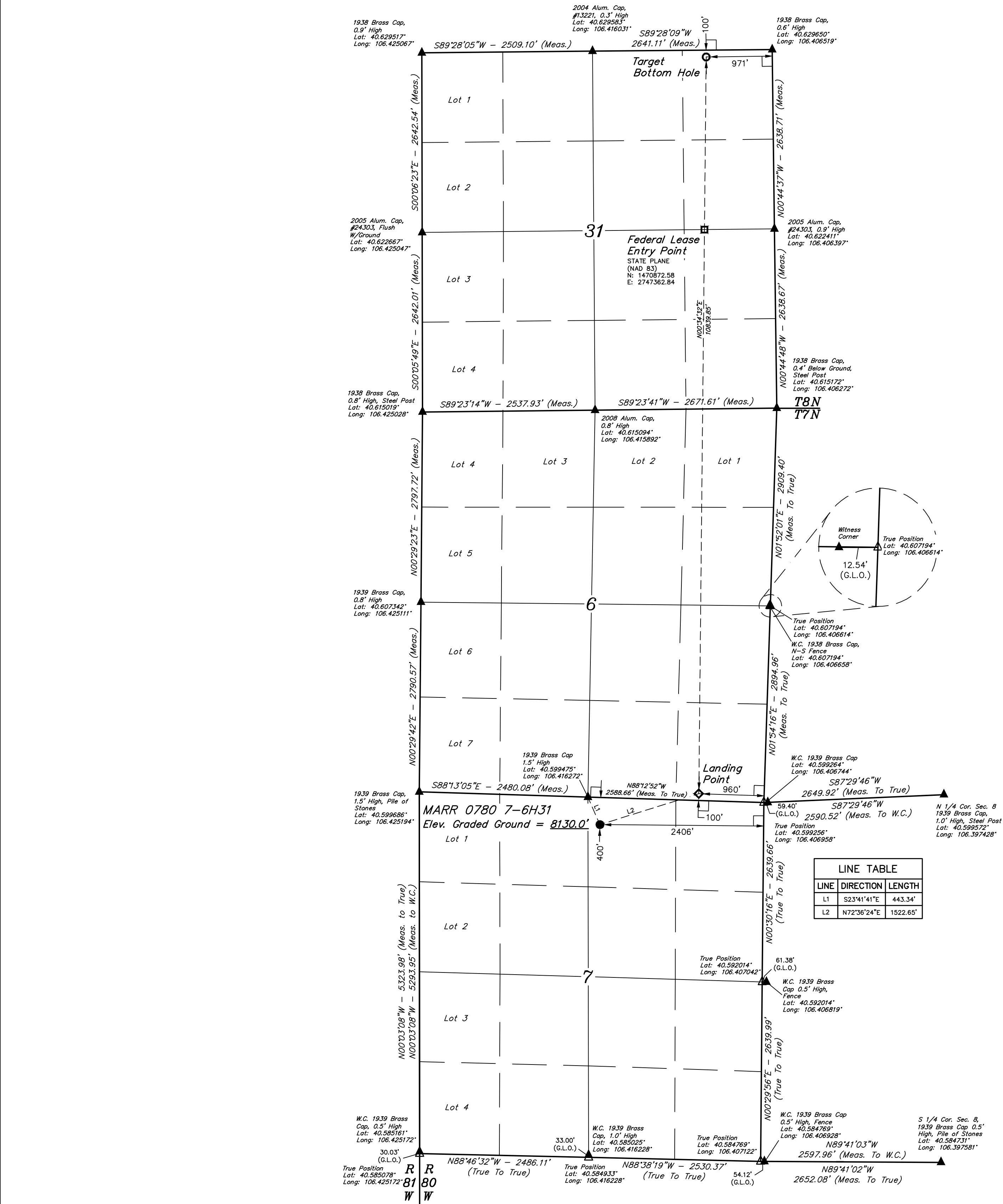


LEGEND:

- = 90° SYMBOL
● = WELLHEAD.
◆ = LANDING POINT.
□ = FEDERAL LEASE ENTRY POINT.
○ = TARGET BOTTOM HOLE.
▲ = SECTION CORNERS LOCATED. (NAD 83)
△ = SECTION CORNERS RE-ESTABLISHED. (Not Set on Ground.) (NAD 83)

T7N, R80W, 6th P.M.



PDOP = 1.2



NAD 83 (SURFACE LOCATION)	NAD 83 (LANDING POINT)	NAD 83 (FEDERAL LEASE ENTRY POINT)	NAD 83 (TARGET BOTTOM HOLE)
LATITUDE = 40°35'54.10" (40.598361)	LATITUDE = 40°35'58.60" (40.599611)	LATITUDE = 40°37'20.58" (40.622383)	LATITUDE = 40°37'45.67" (40.629353)
LONGITUDE = 106°24'56.27" (106.415631)	LONGITUDE = 106°24'37.44" (106.410400)	LONGITUDE = 106°24'36.37" (106.410103)	LONGITUDE = 106°24'36.04" (106.410011)
NAD 27 (SURFACE LOCATION)	NAD 27 (LANDING POINT)	NAD 27 (FEDERAL LEASE ENTRY POINT)	NAD 27 (TARGET BOTTOM HOLE)
LATITUDE = 40°35'54.18" (40.598383)	LATITUDE = 40°35'58.68" (40.599633)	LATITUDE = 40°37'20.66" (40.622406)	LATITUDE = 40°37'45.75" (40.629375)
LONGITUDE = 106°24'54.16" (106.415044)	LONGITUDE = 106°24'35.33" (106.409814)	LONGITUDE = 106°24'34.26" (106.409517)	LONGITUDE = 106°24'33.93" (106.409425)
STATE PLANE NAD 83 (CO. NORTH)	STATE PLANE NAD 83 (CO. NORTH)	STATE PLANE NAD 83 (CO. NORTH)	STATE PLANE NAD 83 (CO. NORTH)
N: 1462137.59 E: 2745738.13	N: 1462577.77 E: 2747195.11	N: 1470872.58 E: 2747362.84	N: 1473410.94 E: 2747414.17
STATE PLANE NAD 27 (CO. NORTH)	STATE PLANE NAD 27 (CO. NORTH)	STATE PLANE NAD 27 (CO. NORTH)	STATE PLANE NAD 27 (CO. NORTH)
N: 462135.48 E: 1745894.36	N: 462575.67 E: 1747351.32	N: 470870.52 E: 1747518.98	N: 473408.90 E: 1747570.28

BASIS OF BEARINGS

BASIS OF BEARINGS IS A G.P.S. OBSERVATION

BASIS OF ELEVATION

SPOT ELEVATION AT THE SOUTHEAST CORNER OF SECTION 29, T7N, R80W, 6th P.M. TAKEN FROM THE COALMONT QUADRANGLE, COLORADO, JACKSON COUNTY, 7.5 MINUTE QUAD. (TOPOGRAPHIC MAP) PUBLISHED BY THE UNITED STATES DEPARTMENT OF THE INTERIOR, GEOLOGICAL SURVEY. SAID ELEVATION IS MARKED AS BEING 8156 FEET.

UELS, LLC

Corporate Office * 85 South 200 East
Vernal, UT 84078 * (435) 789-1017



CERTIFICATE OF RECORD
THIS IS TO CERTIFY THAT THE ABOVE DESCRIBED SURVEY WAS MADE IN ACCORDANCE WITH THE NOTES OF ACTUAL SURVEYS MADE BY ME OR UNDER MY SUPERVISION, AND THAT THE SAME ARE TRUE AND CORRECT TO THE BEST OF MY KNOWLEDGE AND BELIEF.

REGISTERED LAND SURVEYOR
RECORDS SECTION NO. 28285
STATE OF COLORADO
JUL 12 - 17

REV: 6 07-03-17 C.D.L. (SHL CHANGE)

SandRidge Exploration & Production, LLC

MARR 0780 7-6H31
NW 1/4 NE 1/4, SECTION 7, T7N, R80W, 6th P.M.
JACKSON COUNTY, COLORADO

SURVEYED BY	C.M., G.W.	SCALE
DRAWN BY	M.D.	04-27-16 1" = 1000'
WELL LOCATION PLAT		