



Kerr-McGee Oil & Gas Onshore LP

A subsidiary of Anadarko Petroleum Corporation

1099 18th Street
Denver, CO 80202
720-929-6000

August 28, 2017

Matt Lepore
Director, Colorado Oil and Gas Conservation Commission
Department of Natural Resources
The Chancery Building
1120 Lincoln Street, Suite 801
Denver, CO 80203

Re: **30 Day Certification Letter - 318A.e**
HERGENREDER 22N2-4HZ (Doc No. 401344064)
Township 3 North, Range 68 West
Section 33: NWNW
Unit Acreage: 480 Acres
Unit Spacing:
03N68W SEC 33: W2
02N68W SEC 4: NW4
Weld County, Colorado

Dear Director Lepore:

Kerr-McGee Oil and Gas Onshore LP ("KMG") hereby certifies that a thirty (30) day notice has been given by certified mail to all mineral owners in the proposed wellbore spacing unit. We have not received any objections to this spacing unit or location. KMG hereby respectfully requests approval of this well.

If you have any questions or issues regarding this permit, please contact me at (720) 929-3159.

Sincerely,

Kerr-McGee Oil and Gas Onshore LP

A blue ink signature of Nathan S. Bennett, written in a cursive style.

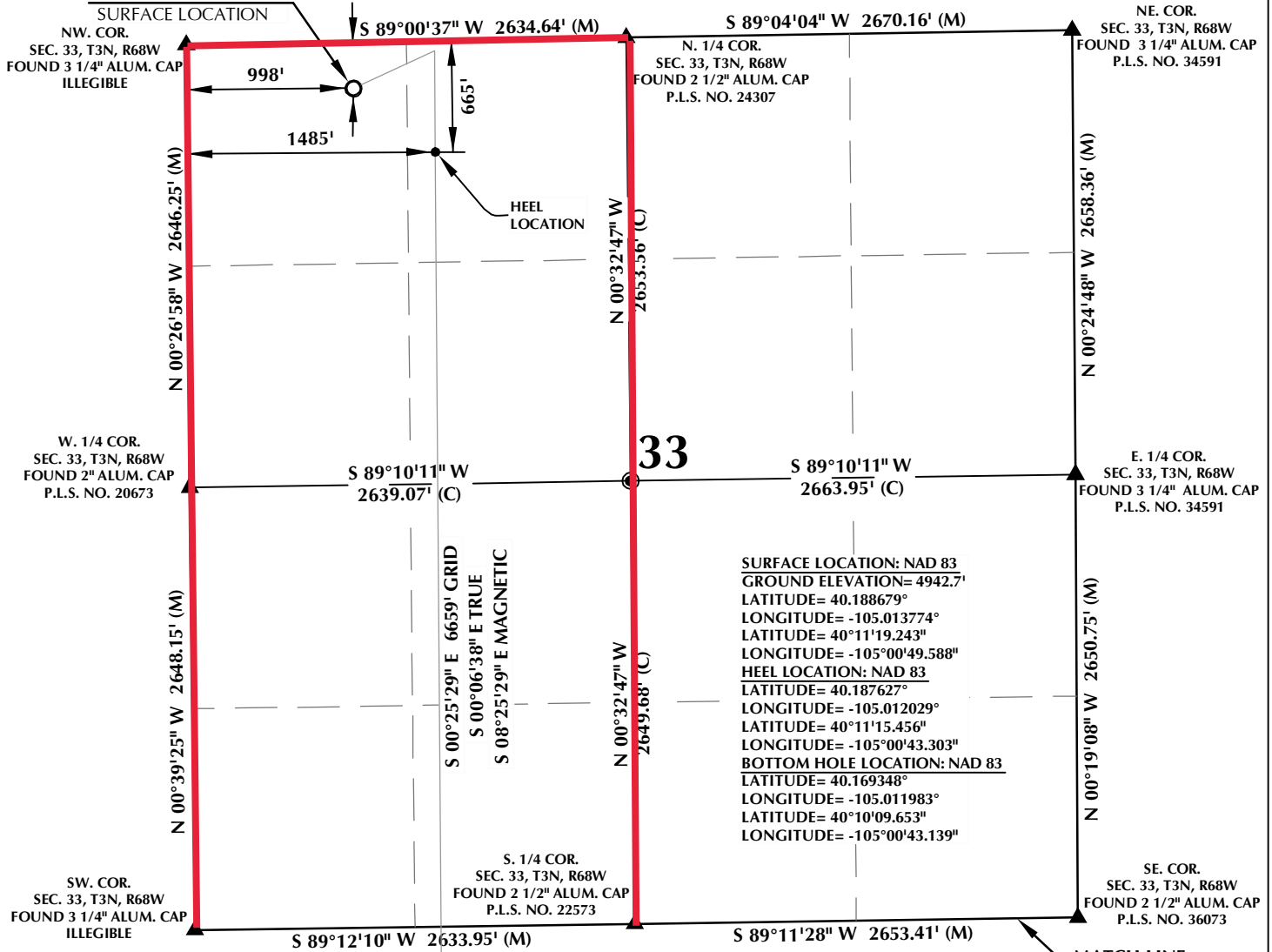
Nathan S. Bennett
Regulatory Manager

Enclosure

HERGENREDER
22N2-4HZ

T3N, R68W

PROPOSED SPACING UNIT



SURFACE LOCATION: NAD 83
GROUND ELEVATION= 4942.7'
LATITUDE= 40.188679°
LONGITUDE= -105.013774°
LATITUDE= 40°11'19.243"
LONGITUDE= -105°00'49.588"
HEEL LOCATION: NAD 83
LATITUDE= 40.187627°
LONGITUDE= -105.012029°
LATITUDE= 40°11'15.456"
LONGITUDE= -105°00'43.303"
BOTTOM HOLE LOCATION: NAD 83
LATITUDE= 40.169348°
LONGITUDE= -105.011983°
LATITUDE= 40°10'09.653"
LONGITUDE= -105°00'43.139"

WELLBORE CONTINUES INTO
SECTION 4, T2N, R68W

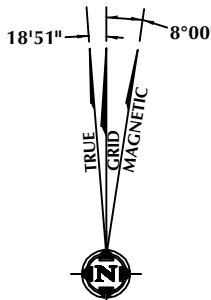
CERTIFICATE OF SURVEYOR:

THIS IS TO CERTIFY THAT THE ABOVE PLAT WAS PREPARED FROM FIELD NOTES OF ACTUAL SURVEY MADE BY ME OR UNDER MY SUPERVISION AND THAT IT IS TRUE AND CORRECT TO THE BEST OF MY KNOWLEDGE AND BELIEF. THIS CERTIFICATE DOES NOT REPRESENT A LAND SURVEY PLAT OR IMPROVEMENT SURVEY PLAT AS DEFINED BY C.S. 38-51-102 AND CANNOT BE RELIED UPON TO DETERMINE OWNERSHIP.

Randall K. French
38512
PROFESSIONAL LAND SURVEYOR
6/27/17
RANDALL K. FRENCH
PROFESSIONAL LAND SURVEYOR
COLORADO REGISTRATION NUMBER 38512

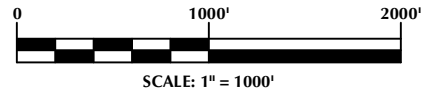
NOTICE:
ACCORDING TO COLORADO STATE LAW YOU MAY COMMENCE LEGAL ACTION BASED UPON ANY DEFECT IN THIS SURVEY WITHIN THREE YEARS AFTER YOU FIRST DISCOVER SUCH DEFECT. IN NO EVENT MAY ANY ACTION BASED UPON ANY DEFECT IN THIS SURVEY BE COMMENCED MORE THAN TEN YEARS FROM THE DATE ON THE CERTIFICATION SHOWN HEREON.

NOTE:
MAGNETIC NORTH IS CURRENT AS OF 6/23/2017.
MAGNETIC NORTH CHANGES WEST 0°06' PER YEAR.



NOTES:

1. ▲ INDICATES SECTION CORNER
2. ● INDICATES CALCULATED CORNER
3. ELEVATION BASED ON NAVD88 (GEOID12A)
4. BASIS OF BEARING DERIVED FROM COLORADO COORDINATE SYSTEM OF 2983 NORTH ZONE.
5. ALL MEASURED DISTANCES ARE GRID. COMBINED SCALE FACTOR: .99972556 CALCULATED FROM THE W. 1/4 CORNER OF SECTION 4, T2N, R68W
6. OPERATOR: ROB WILSON / PDOP = 1.4
7. SEE ADDENDUM TO WELL LOCATION CERTIFICATE FOR EXISTING IMPROVEMENTS WITHIN 500' OF THE WELL PAD.
8. WELL FOOTAGES ARE MEASURED AT RIGHT ANGLES TO THE SECTION LINES.
9. THE BOTTOM OF HOLE BEARS S00°25'29"E, 6659' FROM THE HEEL LOCATION.



WELL PAD - HERGENREDER 22N2-4HZ

HERGENREDER 22N2-4HZ
WELL LOCATION CERTIFICATE
276' FNL & 998' FWL NWNW (SURFACE)
665' FNL & 1485' FWL NENW (HEEL)
LOCATED IN SECTION 33
T3N, R68W, 6TH P.M.
2024' FNL & 1515' FWL LOT 1 (SENW) (BOTTOM)
LOCATED IN SECTION 4
T2N, R68W, 6TH P.M.
WELD COUNTY, COLORADO

Kerr-McGee Oil &
Gas Onshore L.P.
1099 18th Street
Denver, Colorado 80202



CONSULTING, LLC

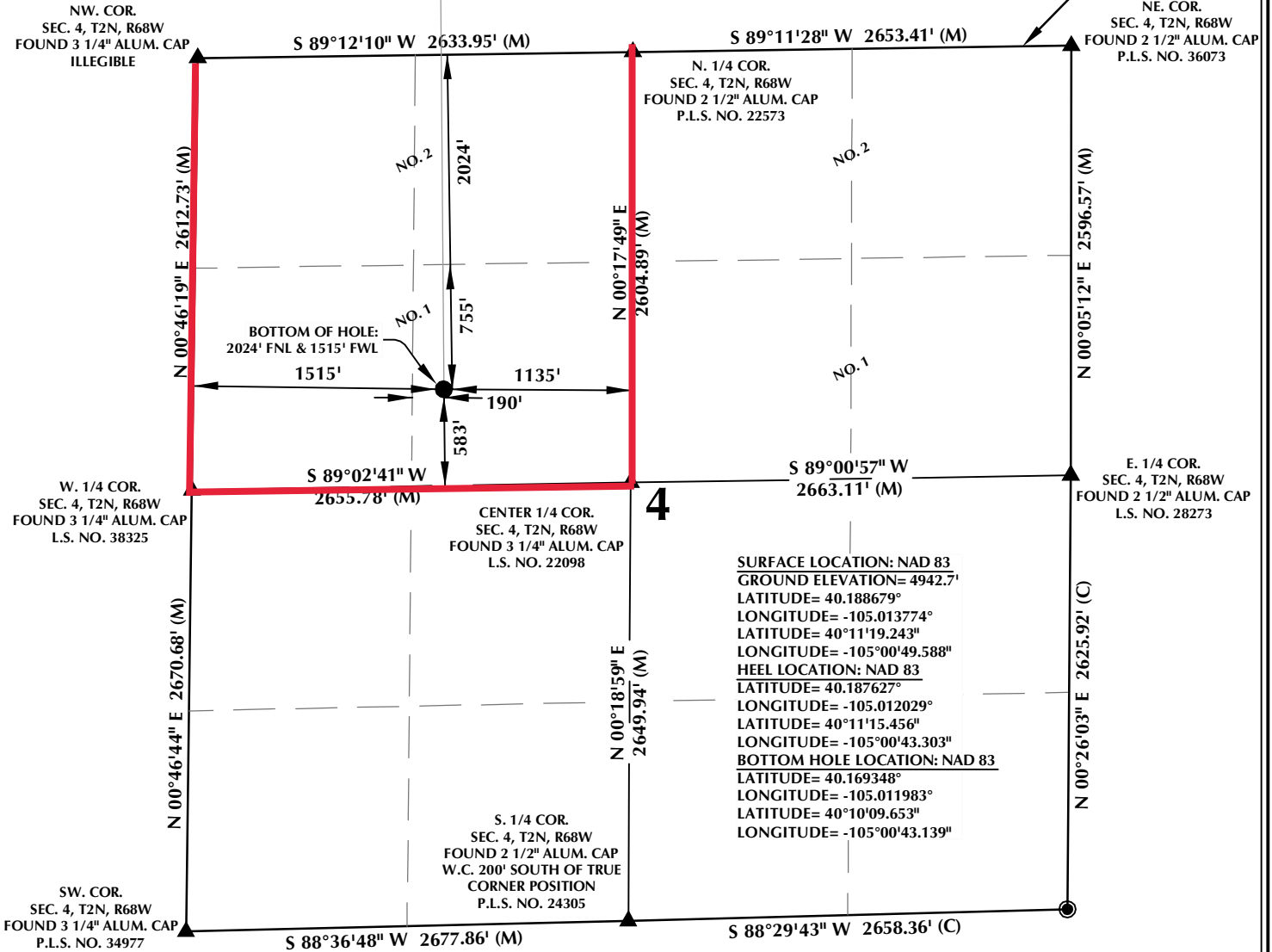
SHERIDAN OFFICE
1095 Saberton Avenue
Sheridan, Wyoming 82801
Phone 307-674-0609

LOVELAND OFFICE
1635 Foxtrail Drive, Suite 204
Loveland, Colorado 80538
Phone 970-776-4331

DRAFTED BY:	LMO	CHECKED BY:	RKF	SHEET NO:
DATE DRAFTED:	9/25/15	DATE SURVEYED:	2/21/17	1
REVISED:	6/27/17	FILE NAME:	15-68	1 OF 2

PROPOSED SPACING UNIT

T2N, R68W

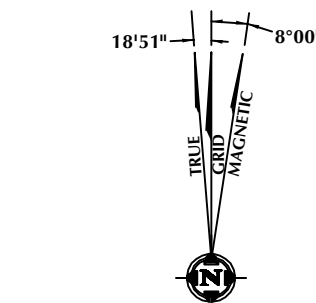


CERTIFICATE OF SURVEYOR:

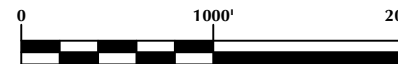
THIS IS TO CERTIFY THAT THE ABOVE PLAT WAS PREPARED FROM FIELD NOTES OF ACTUAL SURVEY MADE BY ME OR UNDER MY SUPERVISION AND THAT THE SAME ARE TRUE AND CORRECT TO THE BEST OF MY KNOWLEDGE AND BELIEF. THIS CERTIFICATE DOES NOT REPRESENT A LAND SURVEY PLAT OR IMPROVEMENT SURVEY PLAT AS DEFINED BY C.S. 38-51-102 AND CANNOT BE RELIED UPON TO DETERMINE OWNERSHIP.

Randall K. French
 RANDALL K. FRENCH
 PROFESSIONAL LAND SURVEYOR
 COLORADO REGISTRATION NUMBER 38512
 6/27/17

NOTICE:
 ACCORDING TO COLORADO STATE LAW YOU MUST COMMENCE ADOPTED ACTION BASED UPON ANY DEFECT IN THIS SURVEY WITHIN THREE YEARS AFTER YOU FIRST DISCOVER SUCH DEFECT. IN NO EVENT MAY ANY ACTION BASED UPON ANY DEFECT IN THIS SURVEY BE COMMENCED MORE THAN TEN YEARS FROM THE DATE ON THE CERTIFICATION SHOWN HEREON.



NOTE:
 MAGNETIC NORTH IS CURRENT AS OF 6/23/2017.
 MAGNETIC NORTH CHANGES WEST 0°06' PER YEAR.



SCALE: 1" = 1000'

NOTES:

- ▲ INDICATES SECTION CORNER
- INDICATES CALCULATED CORNER
- ELEVATION BASED ON NAVD88 (GEOID12A)
- BASIS OF BEARING DERIVED FROM COLORADO COORDINATE SYSTEM OF 1983 NORTH ZONE.
- ALL MEASURED DISTANCES ARE GRID.
 COMBINED SCALE FACTOR: .99972556 CALCULATED FROM THE W. 1/4 CORNER OF SECTION 4, T2N, R68W
- OPERATOR: ROB WILSON / PDOP = 1.4
- SEE ADDENDUM TO WELL LOCATION CERTIFICATE FOR EXISTING IMPROVEMENTS WITHIN 500' OF THE WELL PAD.
- WELL FOOTAGES ARE MEASURED AT RIGHT ANGLES TO THE SECTION LINES.
- THE BOTTOM OF HOLE BEARS S00°25'29"E, 6659' FROM THE HEEL LOCATION.
- NO. 1 & NO. 2 AS SHOWN HEREON ARE GOVERNMENT LOTS 1 & 2 PER THE ORIGINAL GLO SURVEY

WELL PAD - HERGENREDER 22N2-4HZ

HERGENREDER 22N2-4HZ
 WELL LOCATION CERTIFICATE
 276' FNL & 998' FWL NWNW (SURFACE)
 665' FNL & 1485' FWL NENW (HEEL)
 LOCATED IN SECTION 33
 T3N, R68W, 6TH P.M.
 2024' FNL & 1515' FWL LOT 1 (SENW) (BOTTOM)
 LOCATED IN SECTION 4
 T2N, R68W, 6TH P.M.
 WELD COUNTY, COLORADO

**Kerr-McGee Oil &
 Gas Onshore L.P.**
 1099 18th Street
 Denver, Colorado 80202



CONSULTING, LLC

SHERIDAN OFFICE
 1095 Saberton Avenue
 Sheridan, Wyoming 82801
 Phone 307-674-0609

LOVELAND OFFICE
 1635 Foxtrail Drive, Suite 204
 Loveland, Colorado 80538
 Phone 970-776-4331

DRAFTED BY:	LMO	CHECKED BY:	RKF	SHEET NO:
DATE DRAFTED:	9/25/15	DATE SURVEYED:	2/21/17	2
REVISED:	6/27/17	FILE NAME:	15-68	2 OF 2