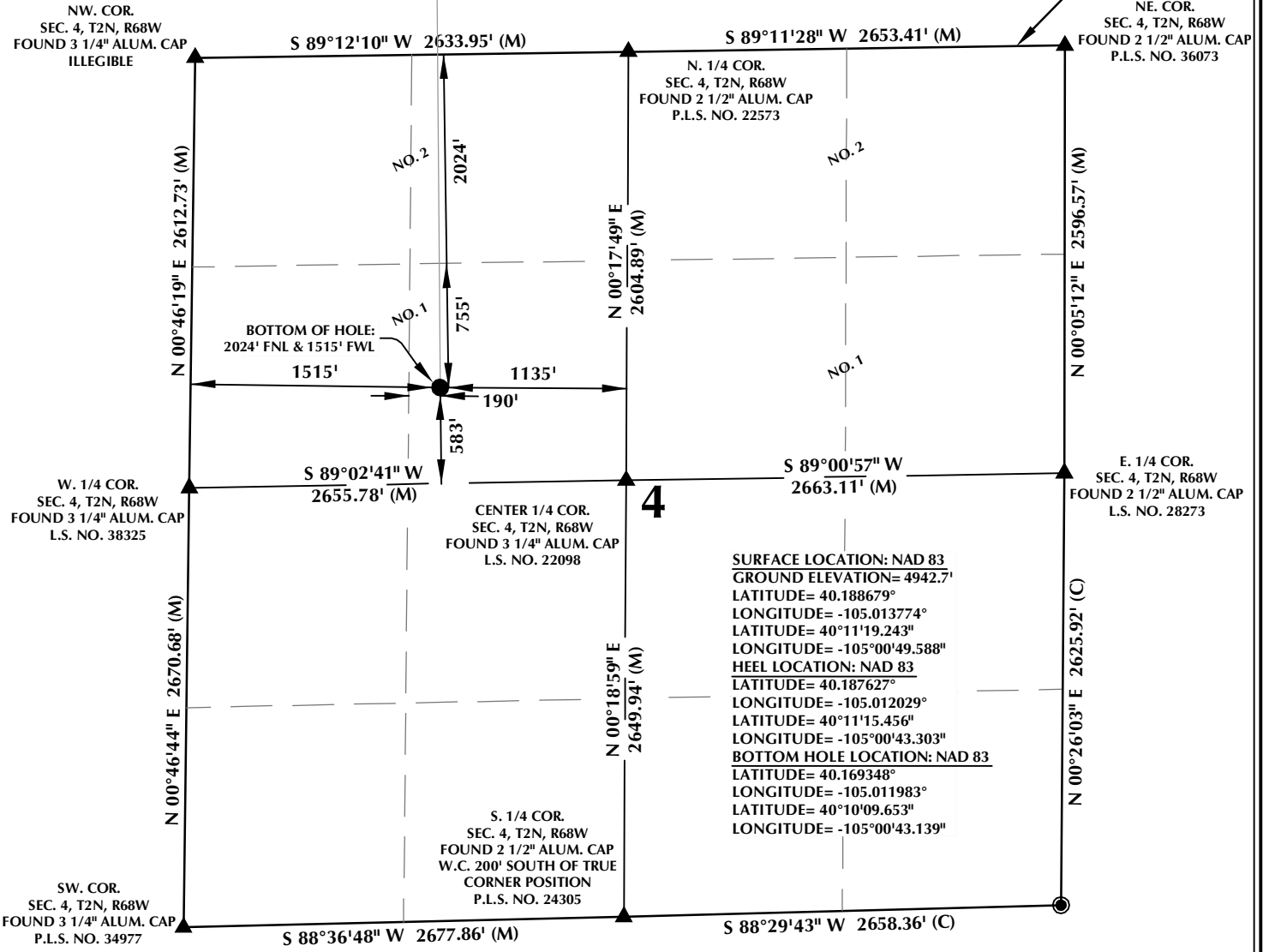




# T2N, R68W

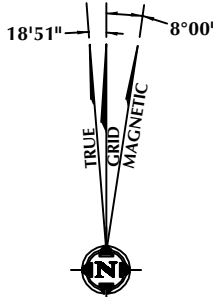
MATCH LINE  
SEE SHEET 1



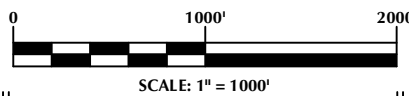
### CERTIFICATE OF SURVEYOR:

THIS IS TO CERTIFY THAT THE ABOVE PLAT WAS PREPARED FROM FIELD NOTES OF ACTUAL SURVEY MADE BY ME OR UNDER MY SUPERVISION AND IS TO THE BEST OF MY KNOWLEDGE AND BELIEF CORRECT TO THE BEST OF MY KNOWLEDGE AND BELIEF. THIS CERTIFICATE DOES NOT REPRESENT A LAND SURVEY PLAT OR IMPROVEMENT SURVEY PLAT AS DEFINED BY C.S. 38-51-302 AND CANNOT BE RELIED UPON TO DETERMINE OWNERSHIP.

*Randall K. French*  
 38512  
**PROFESSIONAL LAND SURVEYOR**  
 RANDALL K. FRENCH  
 PROFESSIONAL LAND SURVEYOR  
 COLORADO REGISTRATION NUMBER 38512  
 6/27/17



NOTE:  
 MAGNETIC NORTH IS CURRENT AS OF 6/23/2017.  
 MAGNETIC NORTH CHANGES WEST 0°06' PER YEAR.



### NOTES:

- ▲ INDICATES SECTION CORNER
- INDICATES CALCULATED CORNER
- ELEVATION BASED ON NAVD88 (GEOID12A)
- BASIS OF BEARING DERIVED FROM COLORADO COORDINATE SYSTEM OF 2983 NORTH ZONE.
- ALL MEASURED DISTANCES ARE GRID.  
 COMBINED SCALE FACTOR: .99972556 CALCULATED FROM THE W. 1/4 CORNER OF SECTION 4, T2N, R68W
- OPERATOR: ROB WILSON / PDOP = 1.4
- SEE ADDENDUM TO WELL LOCATION CERTIFICATE FOR EXISTING IMPROVEMENTS WITHIN 500' OF THE WELL PAD.
- WELL FOOTAGES ARE MEASURED AT RIGHT ANGLES TO THE SECTION LINES.
- THE BOTTOM OF HOLE BEARS S00°25'29"E, 6659' FROM THE HEEL LOCATION.
- NO. 1 & NO. 2 AS SHOWN HEREON ARE GOVERNMENT LOTS 1 & 2 PER THE ORIGINAL GLO SURVEY

### WELL PAD - HERGENREDER 22N2-4HZ

HERGENREDER 22N2-4HZ  
 WELL LOCATION CERTIFICATE  
 276' FNL & 998' FWL NWNW (SURFACE)  
 665' FNL & 1485' FWL NENW (HEEL)  
 LOCATED IN SECTION 33  
 T3N, R68W, 6TH P.M.  
 2024' FNL & 1515' FWL LOT 1 (SENW) (BOTTOM)  
 LOCATED IN SECTION 4  
 T2N, R68W, 6TH P.M.  
 WELD COUNTY, COLORADO

**Kerr-McGee Oil & Gas Onshore L.P.**  
 1099 18th Street  
 Denver, Colorado 80202

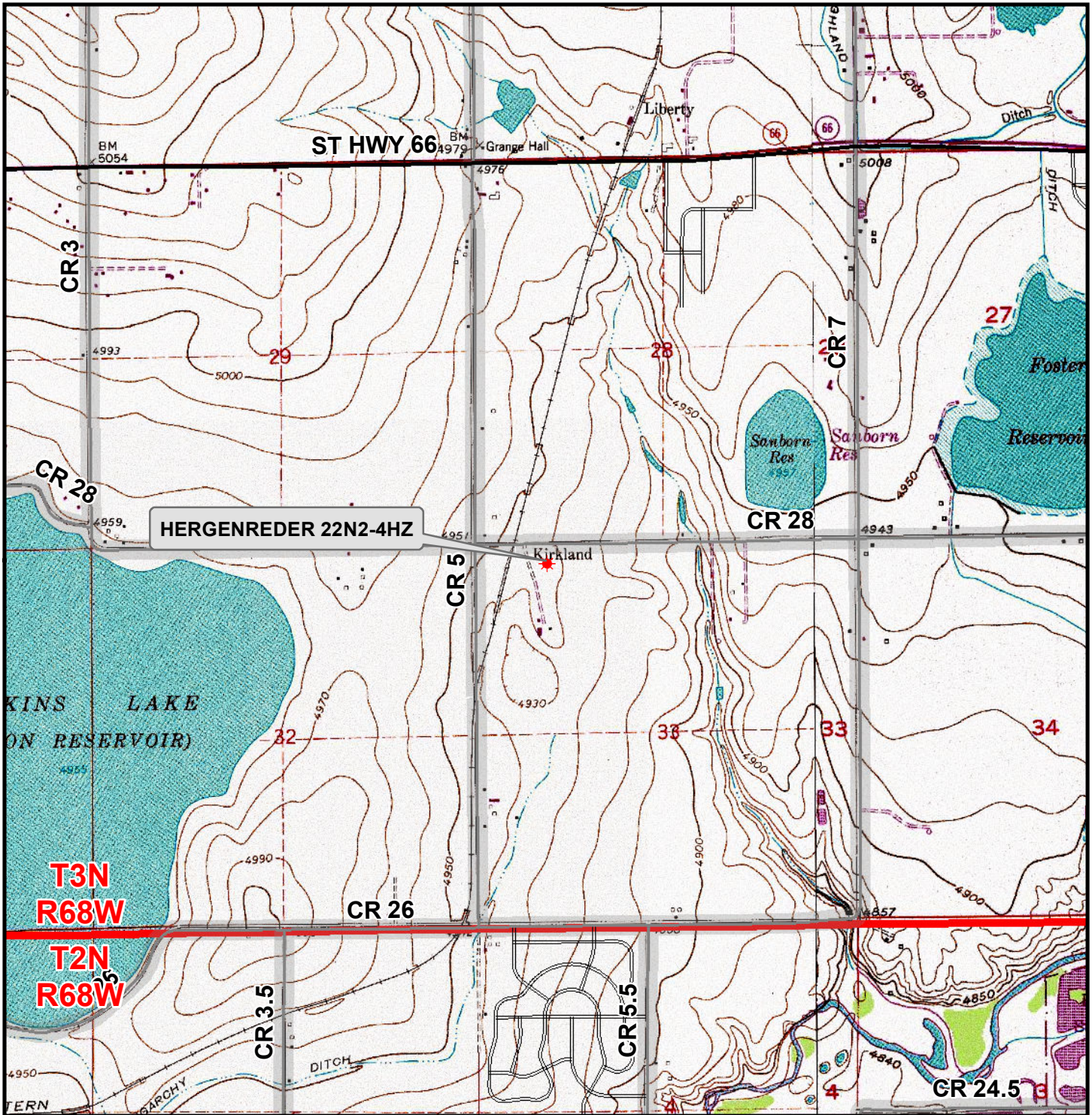
**609 CONSULTING, LLC**

SHERIDAN OFFICE: 1095 Saberton Avenue, Sheridan, Wyoming 82801, Phone 307-674-0609  
 LOVELAND OFFICE: 1635 Foxtrail Drive, Suite 204, Loveland, Colorado 80538, Phone 970-776-4331

DRAFTED BY: LMO	CHECKED BY: RKF	SHEET NO: <b>2</b> 2 OF 2
DATE DRAFTED: 9/25/15	DATE SURVEYED: 2/21/17	
REVISED: 6/27/17	FILE NAME: 15-68	

K:\AMADARKO\2015\2015\_68\_HERGENREDER\_22N2-4HZ\_PLATSWING\_06/27/17\_10-95-32\_AW\_1568

K:\ANADARKO\2015\2015\_68\_HERGENREDER\_T3N\_68W\_33\GIS\Maps\_ABC\HERGENREDER\_22N2-4HZ\HERGENREDER\_22N2-4HZ.mxd 6/27/2017 4:30:23 PM



**Legend**

- Well - Fee - Proposed
- Road - Primitive - Existing
- Road - County - Existing
- Road - Improved - Existing
- Road - Highway - Existing

WELL PAD - HERGENREDER 22N2-4HZ

**GENERAL LOCATION MAP  
HERGENREDER 22N2-4HZ  
LOCATED IN SECTION 33  
T3N, R68W, 6th P.M.  
WELD COUNTY, COLORADO**

**Kerr-McGee Oil &  
Gas Onshore L.P.**

1099 18th Street  
Denver, Colorado 80202



**CONSULTING, LLC**

**SHERIDAN OFFICE**  
2155 North Main Street  
Sheridan, Wyoming 82801  
Phone 307-674-0609

**LOVELAND OFFICE**  
1635 Foxtail Drive, Suite 204  
Loveland, Colorado 80538  
Phone 970-776-4331



SCALE: 1" = 2,000ft

NAD83 CO-Nft

DRAWN: SP

DATE: 27 Jun 2017

REVISED:

DATE: