

# HALLIBURTON

iCem<sup>®</sup> Service

**TEP ROCKY MOUNTAIN LLC**

**For: Terra**

Date: Monday, July 03, 2017

**SR 531-12 Production**

Sincerely,

**Grand Junction Cement Engineering**

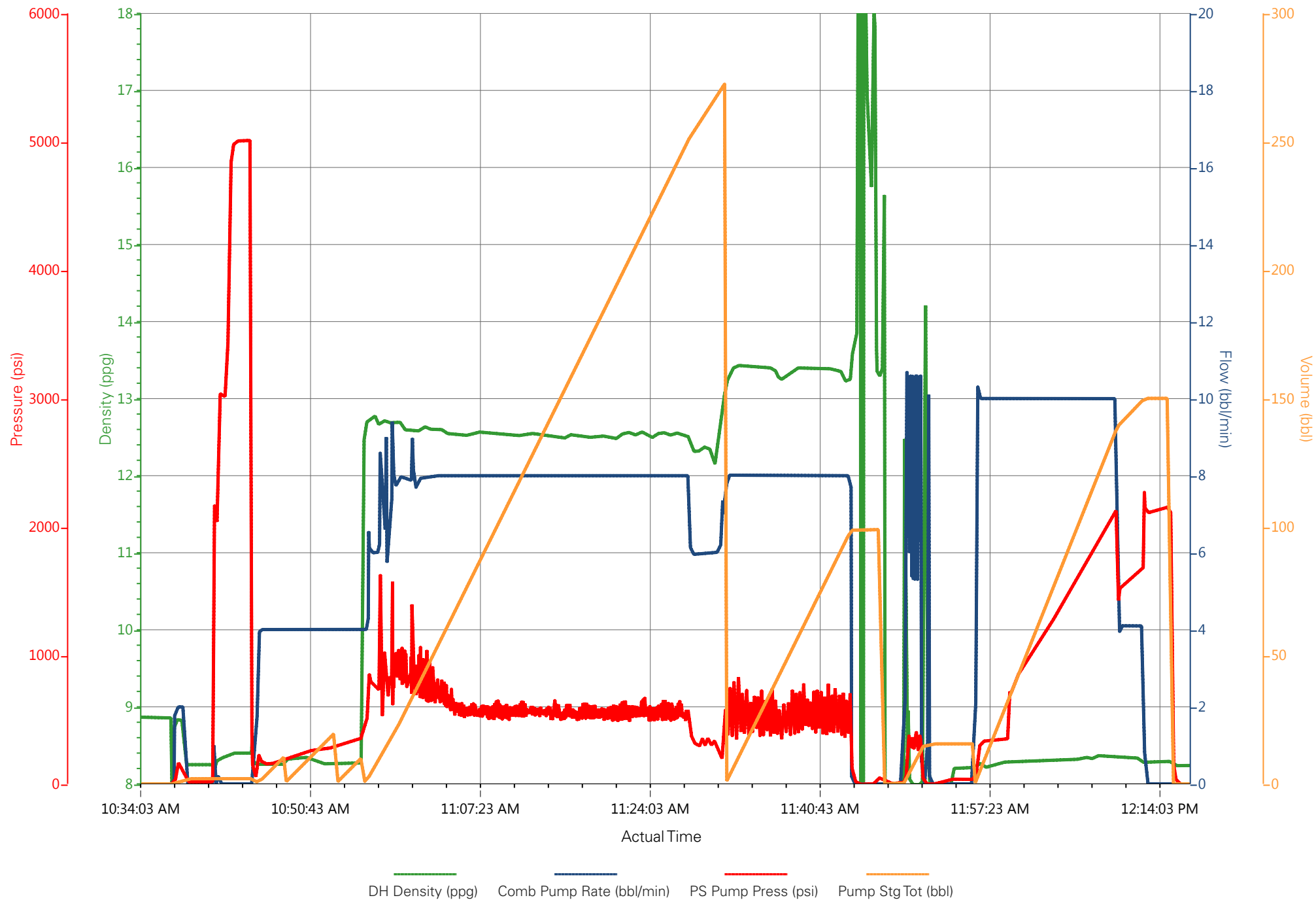
## 2.0 Real-Time Job Summary

## 2.1 Job Event Log

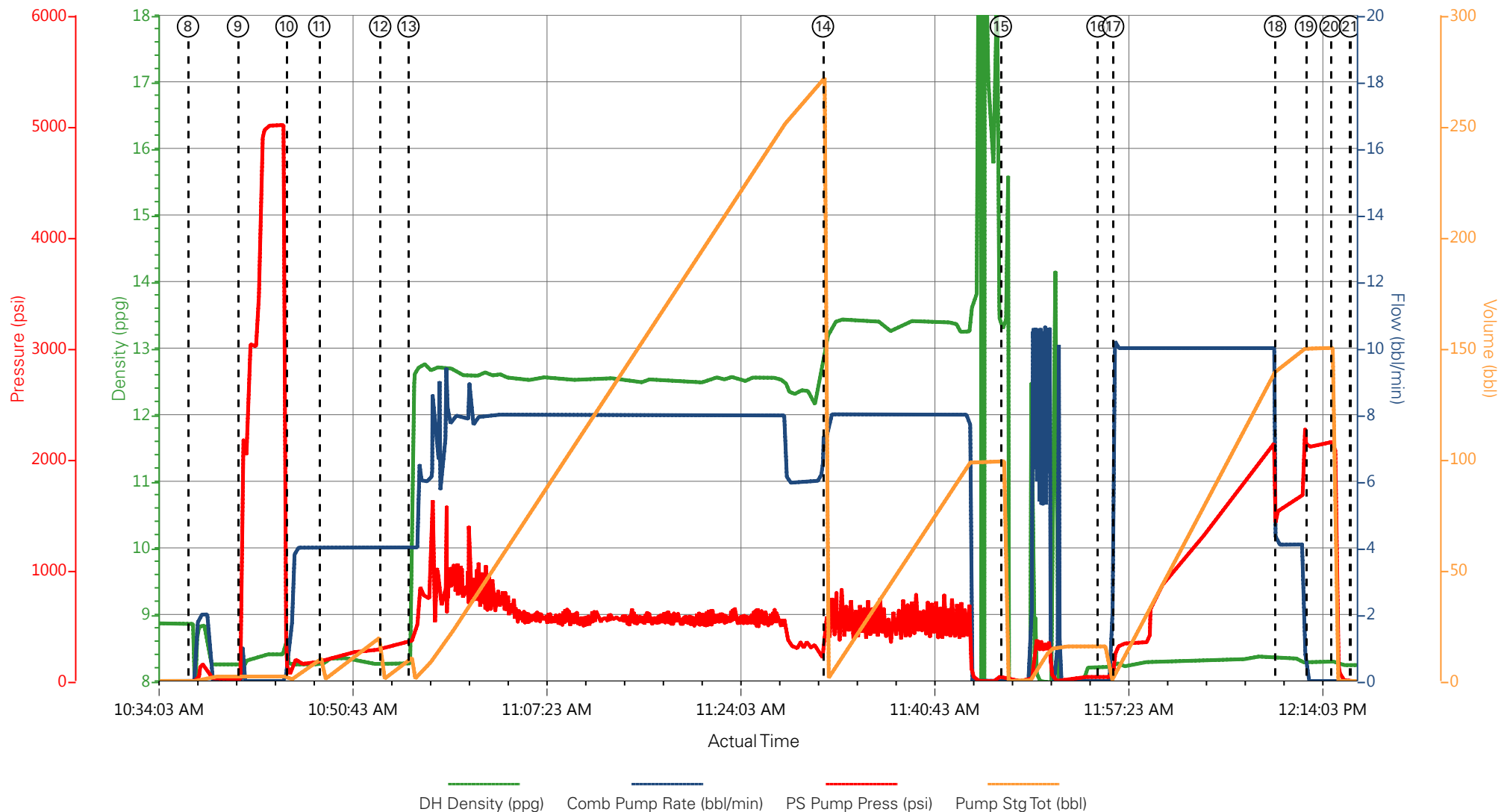
| Type  | Seq. No. | Graph Label                               | Date     | Time     | Source | DH Density<br>(ppg) | Comb Pump Rate<br>(bbl/min) | PS Pump Press<br>(psi) | Pump Stg Tot<br>(bbl) | Comments   |
|-------|----------|---|----------|----------|--------|---------------------|-----------------------------|------------------------|-----------------------|--|
| Event | 1        | Depart from Service Center or Other Site  | 7/3/2017 | 04:20:44 | USER   |                     |                             |                        |                       |  |
| Event | 2        | Arrive at Location from Other Job or Site | 7/3/2017 | 05:45:11 | USER   |                     |                             |                        |                       | REQUESTED ON LOCATION TIME WAS 06:00.                                    |
| Event | 3        | Assessment Of Location Safety Meeting     | 7/3/2017 | 06:15:32 | USER   |                     |                             |                        |                       | WITH ALL HES EMPLOYEES.  |
| Event | 4        | Spot Equipment                            | 7/3/2017 | 06:20:12 | USER   |                     |                             |                        |                       |  |
| Event | 5        | Pre-Rig Up Safety Meeting                 | 7/3/2017 | 06:35:21 | USER   |                     |                             |                        |                       | WITH ALL HES EMPLOYEES.  |
| Event | 6        | Rig-Up Equipment                          | 7/3/2017 | 06:45:11 | USER   |                     |                             |                        |                       | 1-ELITE PUMP, 1-660 BULK TRUCK, 1-SILO, 1-F450 PICKUP.                   |
| Event | 7        | Pre-Job Safety Meeting                    | 7/3/2017 | 10:00:00 | USER   |                     |                             |                        |                       | SAFETY MEETING WITH EVERYONE ON LOCATION.                                |
| Event | 8        | Start Job                                 | 7/3/2017 | 10:36:51 | COM5   | 8.33                | 0.00                        | 0.00                   | 0.0                   | TD-9312' TP-9302' SJ-32' MW-9.8 PPG. HOLE-8 3/4" CASING-4 1/2" 11.6 PPF. |
| Event | 9        | Test Lines                                | 7/3/2017 | 10:41:09 | COM5   | 8.33                | 0.00                        | 5010.00                | 2.0                   | TESTED LINES TO 5010 PSI.  |
| Event | 10       | Pump Water Spacer                         | 7/3/2017 | 10:45:19 | COM5   | 8.33                | 4.00                        | 170.00                 | 10.0                  | 10 BBLS. FRESH WATER SPACER  |
| Event | 11       | Pump Mudflush Spacer                      | 7/3/2017 | 10:48:08 | COM5   | 8.40                | 4.00                        | 250.00                 | 20.0                  | 20 BBLS. MUDFLUSH SPACER   |
| Event | 12       | Pump Water Spacer                         | 7/3/2017 | 10:53:22 | COM5   | 8.33                | 4.00                        | 310.00                 | 10.0                  | 10 BBLS. FRESH WATER SPACER  |
| Event | 13       | Pump Lead Cement                          | 7/3/2017 | 10:55:48 | COM5   | 12.50               | 8.00                        | 980.00                 | 269.5                 | LEAD CEMENT - 780 SKS. @ 12.5 PPG. 1.94 YIELD 9.6 GAL/SK. 269.5 BBLS.    |
| Event | 14       | Pump Tail Cement                          | 7/3/2017 | 11:31:25 | COM5   | 13.30               | 8.00                        | 600.00                 | 81.6                  | TAIL CEMENT- 265 SKS @ 13.3 PPG. 1.73 YIELD 7.81 GAL/SK. 81.6 BBLS.      |
| Event | 15       | Clean Lines                               | 7/3/2017 | 11:46:42 | COM5   |                     |                             |                        |                       | CLEAN PUMPS AND LINES TOTHE PIT.   |

|       |    |                             |          |          |      |      |       |         |       |   |
|-------|----|-----------------------------|----------|----------|------|------|-------|---------|-------|---|
| Event | 16 | Drop Top Plug               | 7/3/2017 | 11:55:00 | COM5 | 8.33 | 0.00  | 0.00    | 0.0   | PLUG LEFT THE PLUG CONTAINER. VERIFIED BY THE TATTLE TAIL   |
| Event | 17 | Pump Displacement           | 7/3/2017 | 11:56:21 | COM5 | 8.33 | 10.00 | 2100.00 |       | KCL WATER DISPLACEMENT 1 LB.OF BE-6 IN THE FIRST 30 BBLs.   |
| Event | 18 | Slow Rate                   | 7/3/2017 | 12:10:16 | COM5 | 8.33 | 4.00  | 1550.00 | 133   | SLOW RATE TO LAND THE PLUG.   |
| Event | 19 | Bump Plug                   | 7/3/2017 | 12:12:55 | COM5 | 8.33 | 0.00  | 1680.00 | 143.7 | PLUG LANDED AT 1680 PSI. PRESSURED UP TO 2130 PSI.  |
| Event | 20 | Check Floats                | 7/3/2017 | 12:15:02 | COM5 |      |       |         |       | FLOATS HELD. 1 BBL.OF FLOW BACK.  |
| Event | 21 | End Job                     | 7/3/2017 | 12:16:41 | COM5 |      |       |         |       | THE WELLWAS CIRCULATED BEFORE STARTING THE JOB. GOOD CIRCULATION THROUGHOUT THE JOB. THE PIPE WAS RECIPROCATED. |
| Event | 22 | Pre-Rig Down Safety Meeting | 7/3/2017 | 12:20:32 | USER |      |       |         |       | THANK YOU FOR USING HALLIBURTON CEMENTING. BRANDON REEVES AND CREW.   |

# TERRA ENERGY PARTNERS - SR 531-12 - 4 1/2" PRODUCTION



# TERRA ENERGY PARTNERS - SR 531-12 - 4 1/2" PRODUCTION



|   |  |                                      |  |
|---|--|--------------------------------------|--|
| ① Depart from Service Center or Other Site n/a;n/a;n/a;n/a  | ⑧ Start Job 8.86;0;-3;0                | ⑮ Clean Lines 13.3;0;45;99           | 22 Pre-Rig Down Safety Meeting n/a;n/a;n/a;n/a |
| ② Arrive at Location from Other Job or Site n/a;n/a;n/a;n/a | ⑨ Test Lines 8.25;0;17;2               | ⑯ Drop Top Plug 8.21;0;37;15.6       |  |
| ③ Assessment Of Location Safety Meeting n/a;n/a;n/a;n/a     | ⑩ Pump Water Spacer 8.25;0.9;50;0      | ⑰ Pump Displacement 8.27;10;298;3.4  |  |
| ④ Spot Equipment n/a;n/a;n/a;n/a                            | ⑪ Pump Mudflush Spacer 8.26;4;178;0.1  | ⑱ Slow Rate 8.34;4.1;1550;140.7      |  |
| ⑤ Pre-Rig Up Safety Meeting n/a;n/a;n/a;n/a                 | ⑫ Pump Water Spacer 8.26;4;301;0.8     | ⑲ Bump Plug 8.28;0;2111;150.1        |  |
| ⑥ Rig-Up Equipment n/a;n/a;n/a;n/a                          | ⑬ Pump Lead Cement 9.82;4;357;0.1      | 20 Check Floats 8.29;0;2161.36;150.1 |  |
| ⑦ Pre-Job Safety Meeting 8.84;0;0;0                         | ⑭ Pump Tail Cement 13.09;7.4;582;272.9 | 21 End Job 8.25;0;-9;0               |  |