

LEGEND:

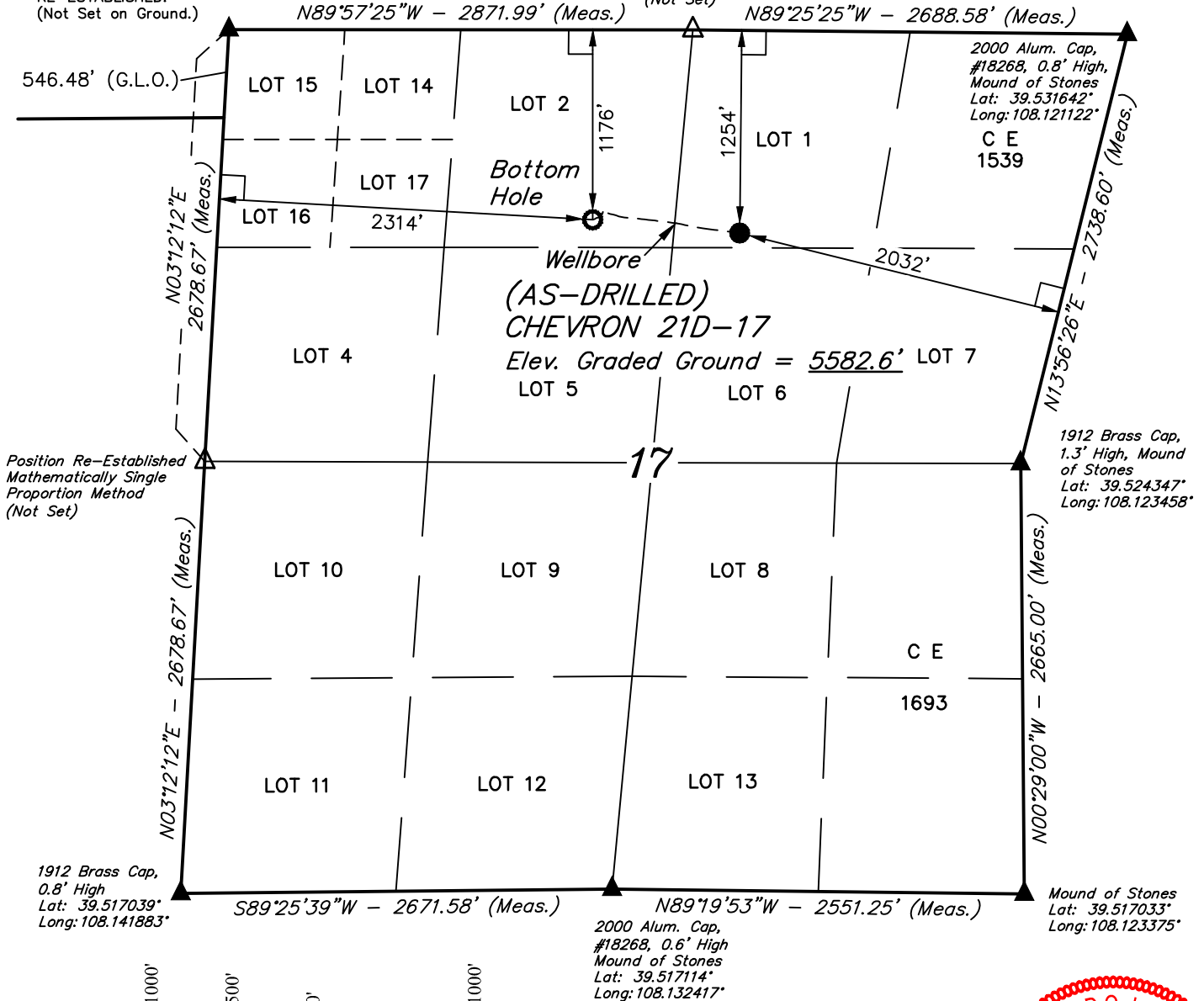
- └─ = 90° SYMBOL
- = AS-DRILLED WELLHEAD.
- = BOTTOM HOLE.
- ▲ = SECTION CORNERS LOCATED.
- △ = SECTION CORNERS RE-ESTABLISHED. (Not Set on Ground.)

T6S, R96W, 6th P.M.

NOTE:
WELL BORE DATA PROVIDED BY Caerus Oil & Gas LLC AS-DRILLED WELL HEAD HAS NOT BEEN FIELD VERIFIED.

Brass Cap, 1.5' High
Lat: 39.531719°
Long: 108.140828°

Position Re-Established
Mathematically Grant
Boundary Method
(Not Set)



PDOP = 1.4



NAD 83 (AS-DRILLED SURFACE LOCATION)	NAD 83 (BOTTOM HOLE)
LATITUDE = 39°31'41.75" (39.528264)	LATITUDE = 39°31'42.56" (39.528489)
LONGITUDE = 108°07'46.64" (108.129622)	LONGITUDE = 108°07'58.26" (108.132850)
NAD 27 (AS-DRILLED SURFACE LOCATION)	NAD 27 (BOTTOM HOLE)
LATITUDE = 39°31'41.83" (39.528286)	LATITUDE = 39°31'42.64" (39.528511)
LONGITUDE = 108°07'44.36" (108.128989)	LONGITUDE = 108°07'55.97" (108.132214)
UTM NAD 27 (ZONE 12)	UTM NAD 27 (ZONE 12)
N: 14367200.85 E: 2450037.20	N: 14367253.82 E: 2449124.88

CERTIFICATE

THIS IS TO CERTIFY THAT THE ABOVE PLAT WAS PREPARED FROM FIELD NOTES OF ACTUAL SURVEYS MADE BY ME OR UNDER MY SUPERVISION AND THAT THE SAME ARE TRUE AND CORRECT TO THE BEST OF MY KNOWLEDGE AND BELIEF.

BASIS OF BEARINGS
BASIS OF BEARINGS IS A G.P.S. OBSERVATION

BASIS OF ELEVATION
SPOT ELEVATION AT THE NORTHWEST CORNER OF SECTION 30, T5S, R95W, 6th P.M., TAKEN FROM THE FORKED GULCH, QUADRANGLE, COLORADO, GARFIELD COUNTY, 7.5 MINUTE QUAD. (TOPOGRAPHIC MAP) PUBLISHED BY THE UNITED STATES DEPARTMENT OF THE INTERIOR, GEOLOGICAL SURVEY. SAID ELEVATION IS MARKED AS BEING 5966 FEET.

Caerus Oil & Gas LLC

**(AS-DRILLED) CHEVRON 21D-17
LOT 1, SECTION 17, T6S, R96W, 6th P.M.
GARFIELD COUNTY, COLORADO**



UELS, LLC
Corporate Office * 85 South 200 East
Vernal, UT 84078 * (435) 789-1017



SURVEYED BY: BRIAN BAKER, B.B.	DATE: 04-30-15
DRAWN BY: M.D.	SCALE: 1" = 1000'
	DATE DRAWN: 08-15-17

WELL LOCATION PLAT