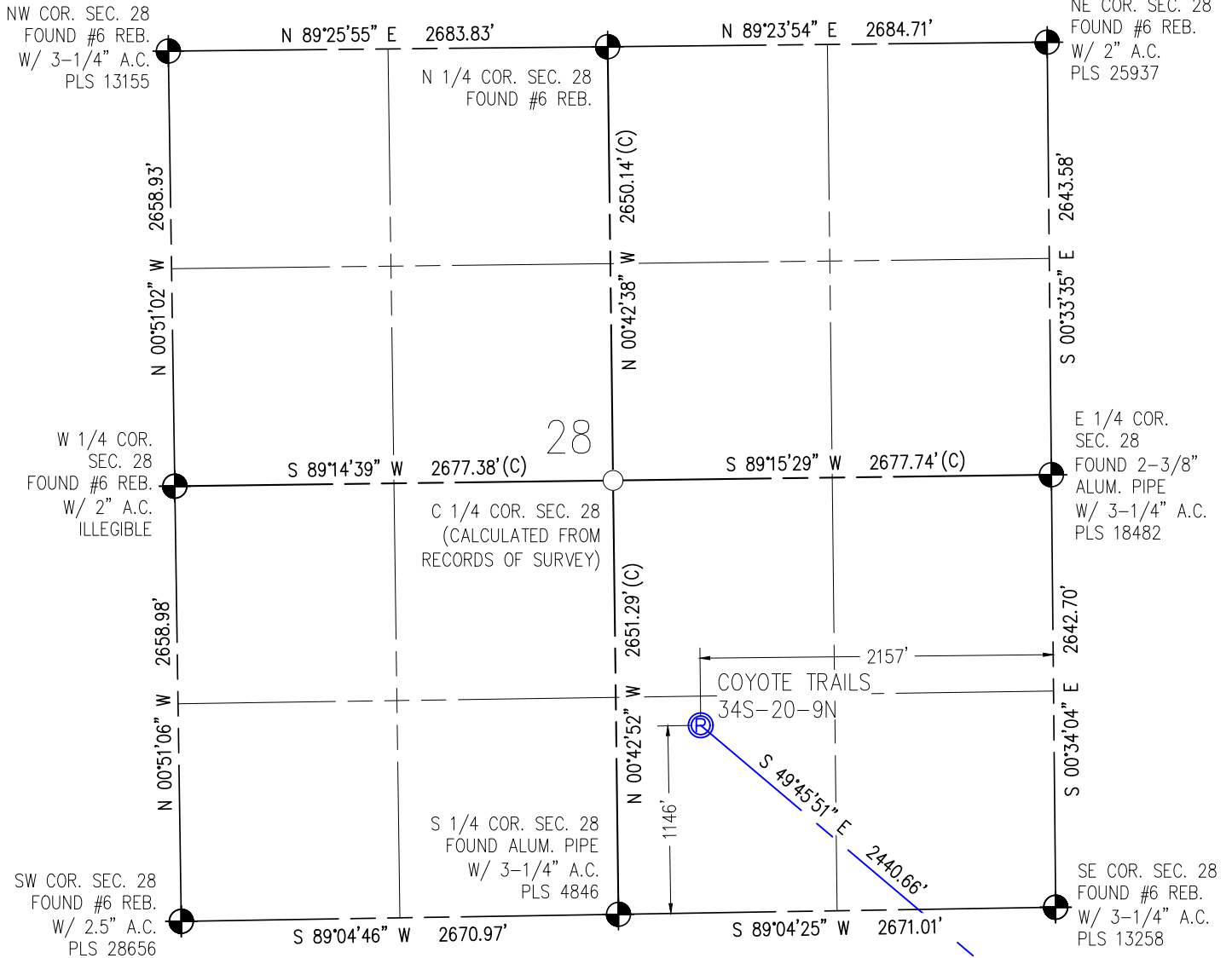


WELL CERTIFICATION EXHIBIT COYOTE TRAILS 34S-20-9N

SW1/4 SE1/4 SEC. 28, T1N, R68W, 6TH P.M.



WELL BORES CONTINUE INTO
SECTION 33 (SHEET 2)

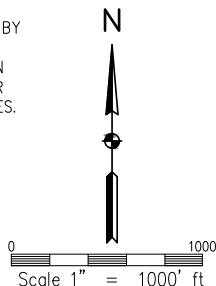
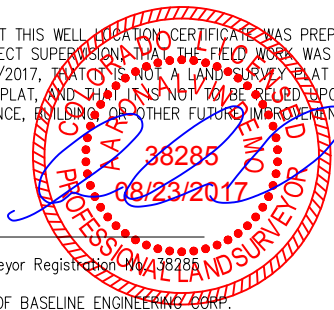
NOTES:

1. INDICATES SECTION CORNER
2. INDICATES CALCULATED CORNER
3. (C) INDICATES CALCULATED DIMENSION
4. ELEVATION BASED ON NAVD88 (GEOID12B)
5. BEARINGS DERIVED FROM COLORADO COORDINATE SYSTEM OF 1983 NORTH ZONE.
6. OPERATOR: TRAVIS WINNICKI
7. IMPROVEMENTS: SEE LOCATION DRAWING FOR ALL VISIBLE IMPROVEMENTS WITHIN 500' OF DISTURBED AREA.
8. WELL FOOTAGES ARE MEASURED AT RIGHT ANGLES TO THE SECTION LINES.

SURFACE LOCATION
SEC. 28, T1N, R68W
GROUND ELEVATION = 5270'
PDOP = 1.3
LATITUDE = 40.017975°
LONGITUDE = -105.006767°
1146' FSL, 2157' FEL
ENTRY POINT LOCATION
SEC. 33, T1N, R68W
LATITUDE = 40.013562°
LONGITUDE = -105.000148°
460' FNL, 306' FEL
BOTTOM HOLE LOCATION
SEC. 4, T1S, R68W
LATITUDE = 39.987086°
LONGITUDE = -104.999944°
150' FSL, 762' FEL

I HEREBY CERTIFY THAT THIS WELL LOCATION CERTIFICATE WAS PREPARED BY ME, OR UNDER MY DIRECT SUPERVISION, THAT THE FIELD WORK WAS COMPLETED ON 06/30/2017, THAT THIS IS NOT A LAND SURVEY PLAT OR AN IMPROVEMENT SURVEY PLAT, AND THAT IT IS NOT TO BE RELIED UPON FOR ESTABLISHMENT OF FENCE, BUILDING OR OTHER FUTURE IMPROVEMENT LINES.

AARON A. DEMO
Professional Land Surveyor Registration No. 38285
State of Colorado
FOR AND ON BEHALF OF BASELINE ENGINEERING CORP.



NEAREST CULTURAL ITEMS:

BUILDING: 1500' SW
BUILDING UNIT: 1500' SW
HIGH OCCUPANCY BUILDING UNIT: 4749' SW
DESIGNATED OUTSIDE ACTIVITY AREA: 5280' ±
PUBLIC ROAD: WELD COUNTY ROAD 4 1280' SW
ABOVE GROUND UTILITY: 1671' S
RAILROAD: 5280' ±
PROPERTY LINE: 517' W
SURFACE USE: GRASSLAND.
NEAREST EXISTING WELL: WEIKLE 28-1 493' S

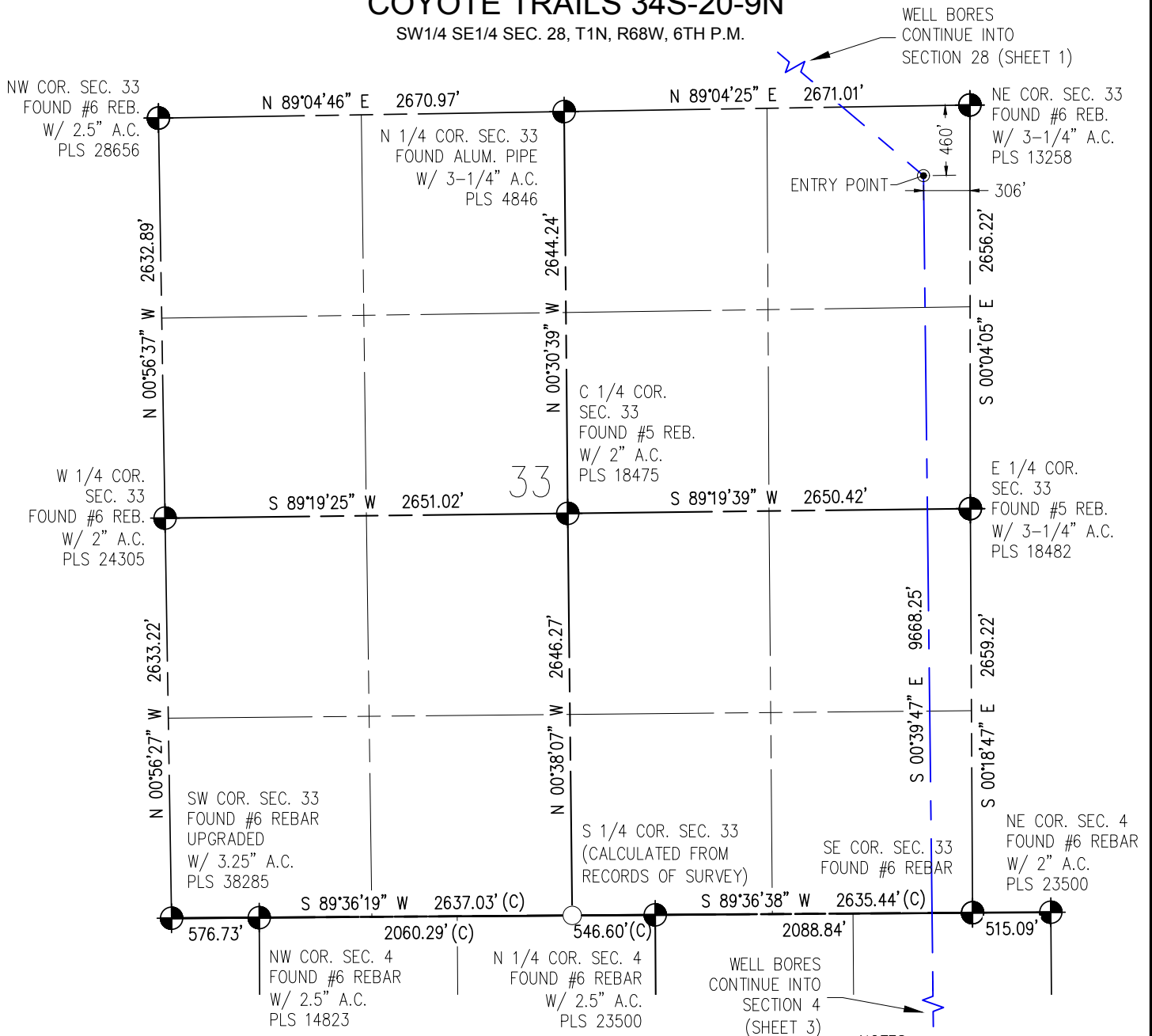


DRAWN BY	RPM	CHECKED BY	AAD
INITIAL SUBMITTAL	08/24/2017	REVISED	N/A
DRAWING SIZE	8.5" X 11"	JOB NO.	EXT01N68W28-01
SHEET	1 OF 3		

BASELINE
Engineering - Planning - Surveying
4007 S. LINCOLN AVENUE, SUITE 405 - LOVELAND, COLORADO 80537
P: 970.353.7800 - F: 970.353.7801 - www.baselinecorp.com

WELL CERTIFICATION EXHIBIT COYOTE TRAILS 34S-20-9N

SW1/4 SE1/4 SEC. 28, T1N, R68W, 6TH P.M.



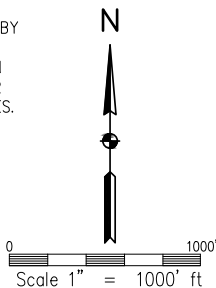
NOTES:

1. INDICATES SECTION CORNER
2. INDICATES CALCULATED CORNER
3. (C) INDICATES CALCULATED DIMENSION
4. ELEVATION BASED ON NAVD88 (GEOID12B)
5. BEARINGS DERIVED FROM COLORADO COORDINATE SYSTEM OF 1983 NORTH ZONE.
6. OPERATOR: TRAVIS WINNICKI
7. IMPROVEMENTS: SEE LOCATION DRAWING FOR ALL VISIBLE IMPROVEMENTS WITHIN 500' OF DISTURBED AREA.
8. WELL FOOTAGES ARE MEASURED AT RIGHT ANGLES TO THE SECTION LINES.

SURFACE LOCATION
SEC. 28, T1N, R68W
GROUND ELEVATION = 5270'
PDOP = 1.3
LATITUDE = 40.017975°
LONGITUDE = -105.006767°
1146' FSL, 2157' FEL
ENTRY POINT LOCATION
SEC. 33, T1N, R68W
LATITUDE = 40.013562°
LONGITUDE = -105.000148°
460' FNL, 306' FEL
BOTTOM HOLE LOCATION
SEC. 4, T1S, R68W
LATITUDE = 39.987086°
LONGITUDE = -104.999944°
150' FSL, 762' FEL

I HEREBY CERTIFY THAT THIS WELL LOCATION CERTIFICATE WAS PREPARED BY ME, OR UNDER MY DIRECT SUPERVISION, THAT THE FIELD WORK WAS COMPLETED ON 06/30/2017, THAT THIS IS NOT A LAND SURVEY PLAT OR AN IMPROVEMENT SURVEY PLAT, AND THAT IT IS NOT TO BE RELIED UPON FOR ESTABLISHMENT OF FENCE, BUILDING, OR OTHER FUTURE IMPROVEMENT LINES.

AARON A. DEMO
Professional Land Surveyor Registration No. 38285
State of Colorado
FOR AND ON BEHALF OF BASELINE ENGINEERING CORP.

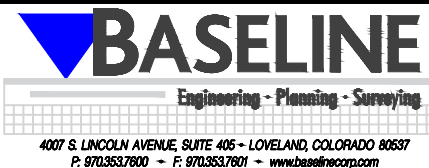


NEAREST CULTURAL ITEMS:

BUILDING: 1500' SW
BUILDING UNIT: 1500' SW
HIGH OCCUPANCY BUILDING UNIT: 4749' SW
DESIGNATED OUTSIDE ACTIVITY AREA: 5280' ±
PUBLIC ROAD: WELD COUNTY ROAD 4 1280' SW
ABOVE GROUND UTILITY: 1671' S
RAILROAD: 5280' ±
PROPERTY LINE: 517' W
SURFACE USE: GRASSLAND.
NEAREST EXISTING WELL: MEIKLE 28-1 493' S



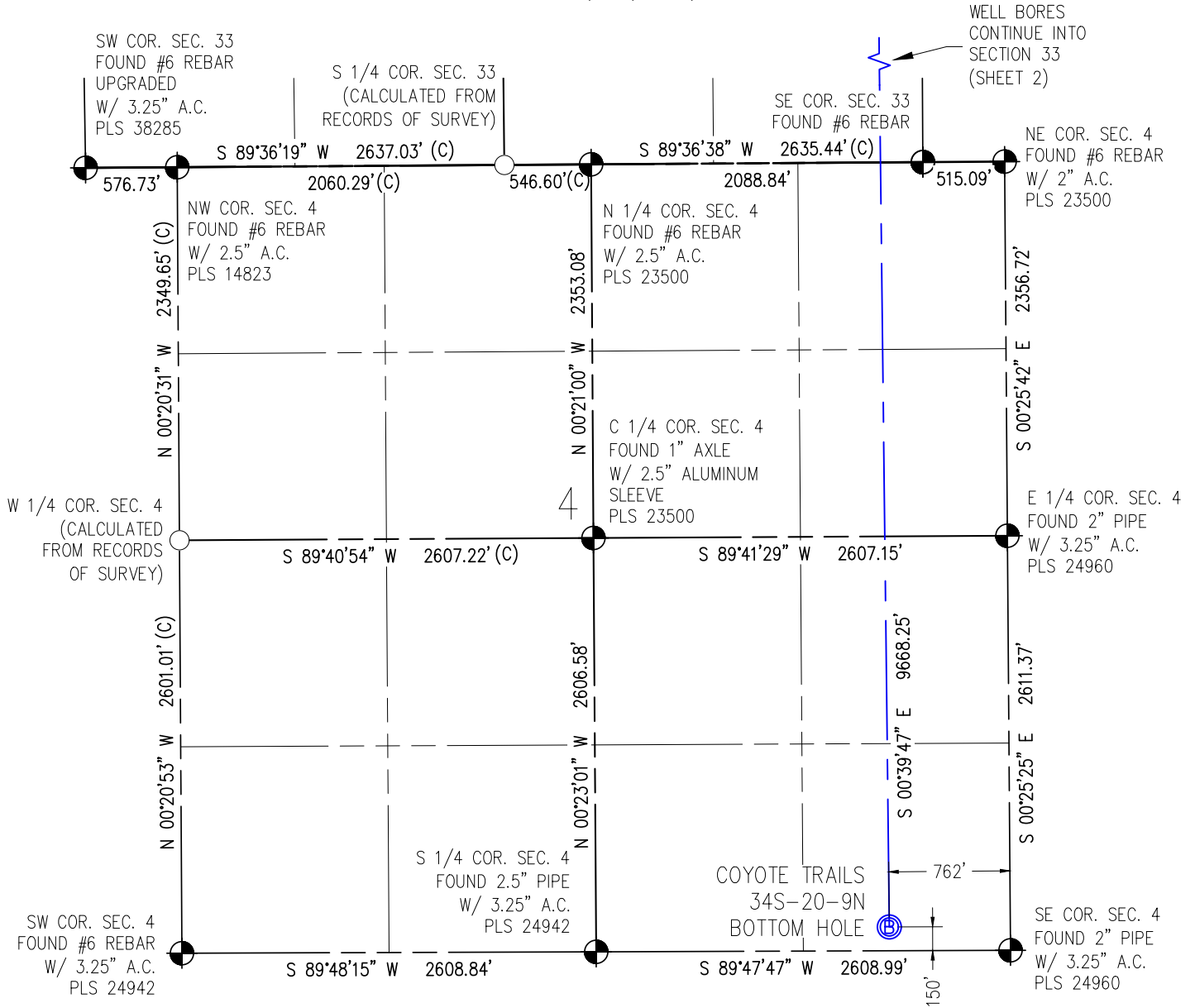
DRAWN BY	RPM	CHECKED BY	AAD
INITIAL SUBMITTAL	08/24/2017		
REVISED	N/A		
DRAWING SIZE	8.5" X 11"		
JOB NO.	EXT01N68W28-01		
SHEET	2 OF 3		



4007 S. LINCOLN AVENUE, SUITE 405 • LOVELAND, COLORADO 80537
P: 970.353.7800 • F: 970.353.7801 • www.baselinecorp.com

WELL CERTIFICATION EXHIBIT COYOTE TRAILS 34S-20-9N

SW1/4 SE1/4 SEC. 28, T1N, R68W, 6TH P.M.



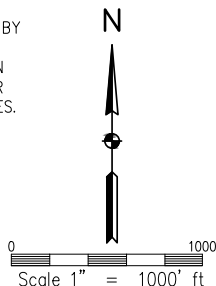
NOTES:

1. INDICATES SECTION CORNER
2. INDICATES CALCULATED CORNER
3. (C) INDICATES CALCULATED DIMENSION
4. ELEVATION BASED ON NAVD88 (GEOID12B)
5. BEARINGS DERIVED FROM COLORADO COORDINATE SYSTEM OF 1983 NORTH ZONE.
6. OPERATOR: TRAVIS WINNICKI
7. IMPROVEMENTS: SEE LOCATION DRAWING FOR ALL VISIBLE IMPROVEMENTS WITHIN 500' OF DISTURBED AREA.
8. WELL FOOTAGES ARE MEASURED AT RIGHT ANGLES TO THE SECTION LINES.

SURFACE LOCATION
SEC. 28, T1N, R68W
GROUND ELEVATION = 5270'
PDOP = 1.3
LATITUDE = 40.017975°
LONGITUDE = -105.006767°
1146' FSL, 2157' FEL
ENTRY POINT LOCATION
SEC. 33, T1N, R68W
LATITUDE = 40.013562°
LONGITUDE = -105.000148°
460' FNL, 306' FEL
BOTTOM HOLE LOCATION
SEC. 4, T1S, R68W
LATITUDE = 39.987086°
LONGITUDE = -104.999944°
150' FSL, 762' FEL

I HEREBY CERTIFY THAT THIS WELL LOCATION CERTIFICATE WAS PREPARED BY ME, OR UNDER MY DIRECT SUPERVISION, THAT THE FIELD WORK WAS COMPLETED ON 06/30/2017, THAT THIS IS NOT A LAND SURVEY PLAT OR AN IMPROVEMENT SURVEY PLAT, AND THAT IT IS NOT TO BE RELIED UPON FOR ESTABLISHMENT OF FENCE, BUILDING OR OTHER FUTURE IMPROVEMENT LINES.

AARON A. DEMO
Professional Land Surveyor Registration No. 38285
State of Colorado
FOR AND ON BEHALF OF BASELINE ENGINEERING CORP.



NEAREST CULTURAL ITEMS:

BUILDING: 1500' SW
BUILDING UNIT: 1500' SW
HIGH OCCUPANCY BUILDING UNIT: 4749' SW
DESIGNATED OUTSIDE ACTIVITY AREA: 5280' ±
PUBLIC ROAD: WELD COUNTY ROAD 4 1280' SW
ABOVE GROUND UTILITY: 1671' S
RAILROAD: 5280' ±
PROPERTY LINE: 517' W
SURFACE USE: GRASSLAND.
NEAREST EXISTING WELL: MEIKLE 28-1 493' S



DRAWN BY	RPM	CHECKED BY	AAD
INITIAL SUBMITTAL	08/24/2017		
REVISED	N/A		
DRAWING SIZE	8.5" X 11"		
JOB NO.	EXT01N68W28-01		
SHEET	3 OF 3		

BASELINE
Engineering - Planning - Surveying
4007 S. LINCOLN AVENUE, SUITE 405 • LOVELAND, COLORADO 80537
P: 970.353.7800 • F: 970.353.7801 • www.baselinecorp.com