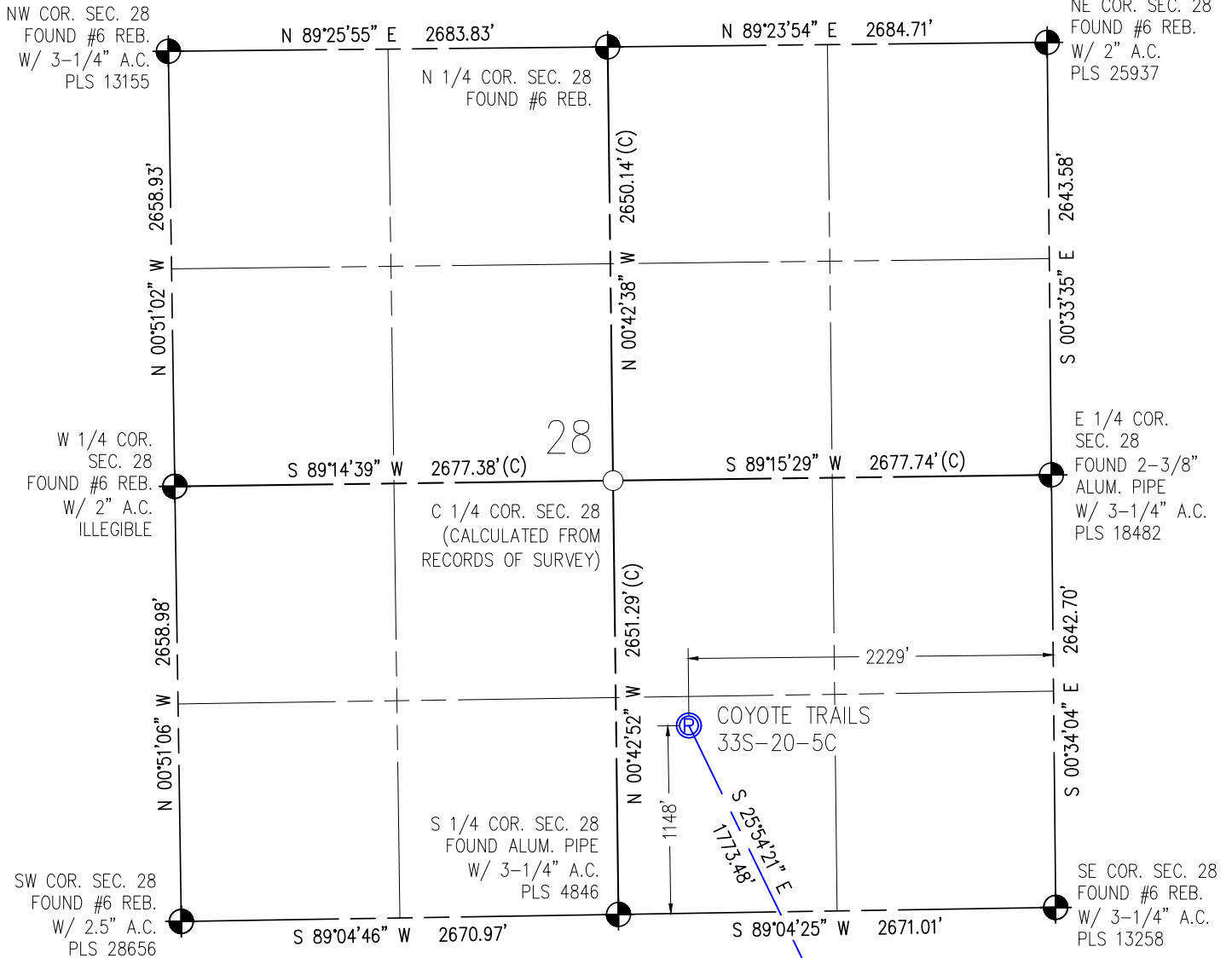


# WELL CERTIFICATION EXHIBIT COYOTE TRAILS 33S-20-5C

SW1/4 SE1/4 SEC. 28, T1N, R68W, 6TH P.M.



WELL BORES CONTINUE INTO  
SECTION 33 (SHEET 2)

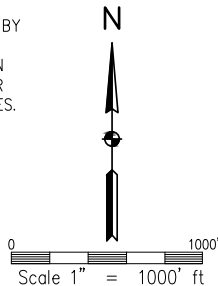
SURFACE LOCATION  
SEC. 28, T1N, R68W  
GROUND ELEVATION = 5270'  
PDOP = 1.3  
LATITUDE = 40.017976°  
LONGITUDE = -105.007024°  
1148' FSL, 2229' FEL  
ENTRY POINT LOCATION  
SEC. 33, T1N, R68W  
LATITUDE = 40.013586°  
LONGITUDE = -105.004290°  
460' FNL, 1466' FEL  
BOTTOM HOLE LOCATION  
SEC. 4, T1S, R68W  
LATITUDE = 39.987093°  
LONGITUDE = -105.004086°  
150' FSL, 1923' FEL

## NOTES:

1. INDICATES SECTION CORNER
2. INDICATES CALCULATED CORNER
3. (C) INDICATES CALCULATED DIMENSION
4. ELEVATION BASED ON NAVD88 (GEOID12B)
5. BEARINGS DERIVED FROM COLORADO COORDINATE SYSTEM OF 1983 NORTH ZONE.
6. OPERATOR: TRAVIS WINNICKI
7. IMPROVEMENTS: SEE LOCATION DRAWING FOR ALL VISIBLE IMPROVEMENTS WITHIN 500' OF DISTURBED AREA.
8. WELL FOOTAGES ARE MEASURED AT RIGHT ANGLES TO THE SECTION LINES.

I HEREBY CERTIFY THAT THIS WELL LOCATION CERTIFICATE WAS PREPARED BY ME, OR UNDER MY DIRECT SUPERVISION, THAT THE FIELD WORK WAS COMPLETED ON 06/30/2017, THAT THIS IS NOT A LAND SURVEY PLAT OR AN IMPROVEMENT SURVEY PLAT, AND THAT IT IS NOT TO BE RELIED UPON FOR ESTABLISHMENT OF FENCE, BUILDING OR OTHER FUTURE IMPROVEMENT LINES.

AARON A. DEMO  
Professional Land Surveyor Registration No. 38285  
State of Colorado  
FOR AND ON BEHALF OF BASELINE ENGINEERING CORP.

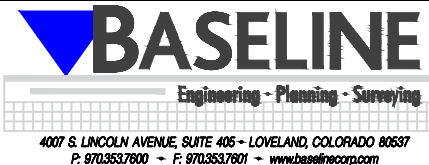


## NEAREST CULTURAL ITEMS:

BUILDING: 1464' SW  
BUILDING UNIT: 4713' SW  
HIGH OCCUPANCY BUILDING UNIT: 4713' SW  
DESIGNATED OUTSIDE ACTIVITY AREA: 5280'±  
PUBLIC ROAD: WELD COUNTY ROAD 4 1249' SW  
ABOVE GROUND UTILITY: 1695' S  
RAILROAD: 5280'±  
PROPERTY LINE: 445' W  
SURFACE USE: GRASSLAND.  
NEAREST EXISTING WELL: MEIKLE 28-1 519' SE



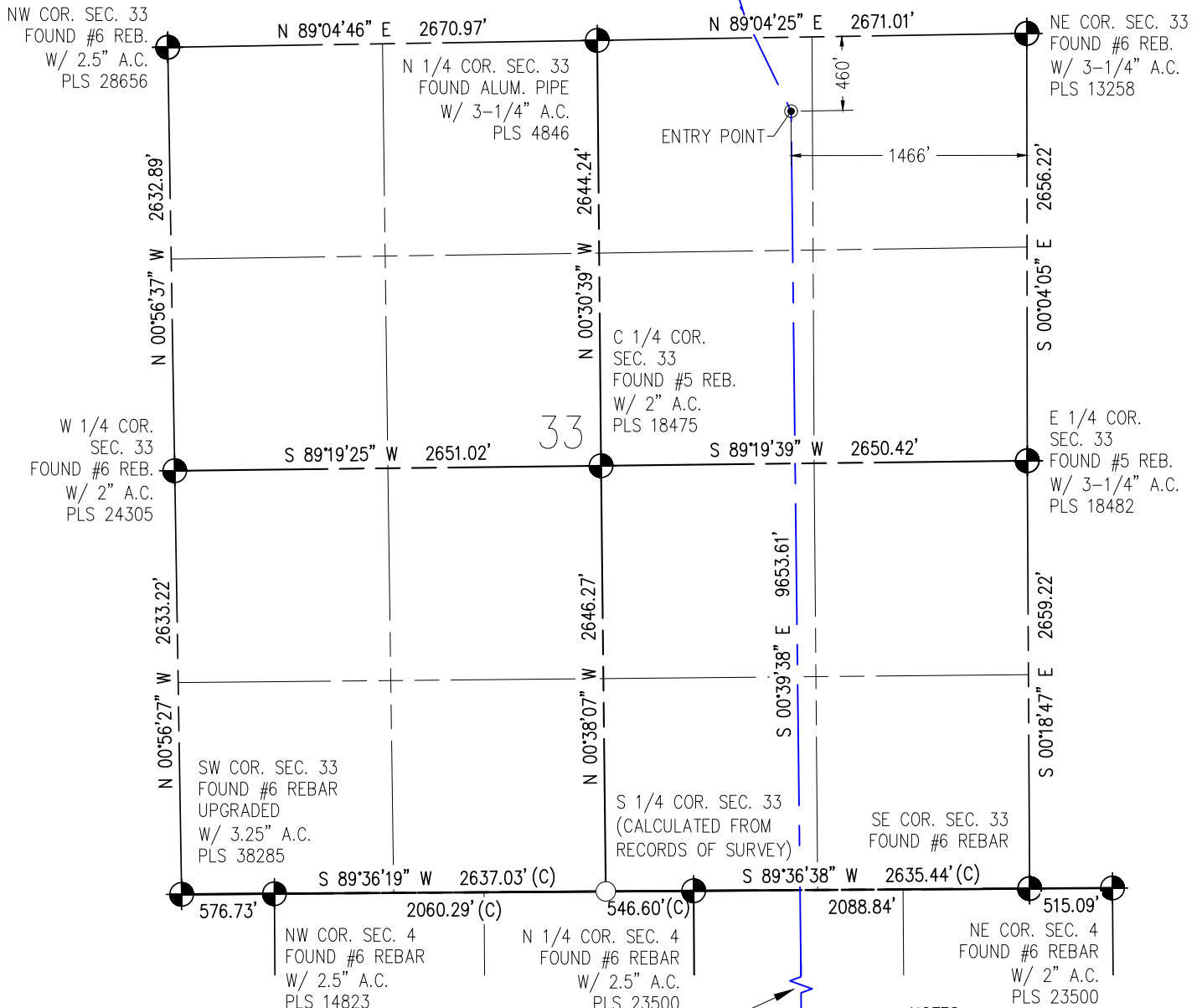
DRAWN BY	RPM	CHECKED BY	AAD
INITIAL SUBMITTAL	08/24/2017		
REVISED	N/A		
DRAWING SIZE	8.5" X 11"		
JOB NO.	EXT01N68W28-01		
SHEET	1 OF 3		



# WELL CERTIFICATION EXHIBIT COYOTE TRAILS 33S-20-5C

SW1/4 SE1/4 SEC. 28, T1N, R68W, 6TH P.M.

WELL BORES  
CONTINUE INTO  
SECTION 28 (SHEET 1)



WELL BORES CONTINUE INTO  
SECTION 4 (SHEET 3)

SURFACE LOCATION  
SEC. 28, T1N, R68W  
GROUND ELEVATION = 5270'  
PDOP = 1.3  
LATITUDE = 40.017976°  
LONGITUDE = -105.007024°  
1148' FSL, 2229' FEL  
ENTRY POINT LOCATION  
SEC. 33, T1N, R68W  
LATITUDE = 40.013586°  
LONGITUDE = -105.004290°  
460' FNL, 1466' FEL  
BOTTOM HOLE LOCATION  
SEC. 4, T1S, R68W  
LATITUDE = 39.987093°  
LONGITUDE = -105.004086°  
150' FSL, 1923' FEL

## NOTES:

1. ● INDICATES SECTION CORNER
2. ○ INDICATES CALCULATED CORNER
3. (C) INDICATES CALCULATED DIMENSION
4. ELEVATION BASED ON NAVD88 (GEOID12B)
5. BEARINGS DERIVED FROM COLORADO COORDINATE SYSTEM OF 1983 NORTH ZONE.
6. OPERATOR: TRAVIS WINNICKI
7. IMPROVEMENTS: SEE LOCATION DRAWING FOR ALL VISIBLE IMPROVEMENTS WITHIN 500' OF DISTURBED AREA.
8. WELL FOOTAGES ARE MEASURED AT RIGHT ANGLES TO THE SECTION LINES.

I HEREBY CERTIFY THAT THIS WELL LOCATION CERTIFICATE WAS PREPARED BY ME, OR UNDER MY DIRECT SUPERVISION, THAT THE FIELD WORK WAS COMPLETED ON 06/30/2017, THAT THIS IS NOT A LAND SURVEY PLAT OR AN IMPROVEMENT SURVEY PLAT, AND THAT IT IS NOT TO BE RELIED UPON FOR ESTABLISHMENT OF FENCE, BUILDING OR OTHER FUTURE IMPROVEMENT LINES.

AARON A. DEMO  
Professional Land Surveyor Registration No. 38285  
State of Colorado  
FOR AND ON BEHALF OF BASELINE ENGINEERING CORP.

## NEAREST CULTURAL ITEMS:

BUILDING: 1464' SW  
BUILDING UNIT: 1464' SW  
HIGH OCCUPANCY BUILDING UNIT: 4713' SW  
DESIGNATED OUTSIDE ACTIVITY AREA: 5280' ±  
PUBLIC ROAD: WELD COUNTY ROAD 4 1249' SW  
ABOVE GROUND UTILITY: 1695' S  
RAILROAD: 5280' ±  
PROPERTY LINE: 445' W  
SURFACE USE: GRASSLAND.  
NEAREST EXISTING WELL: MEIKLE 28-1 519' SE



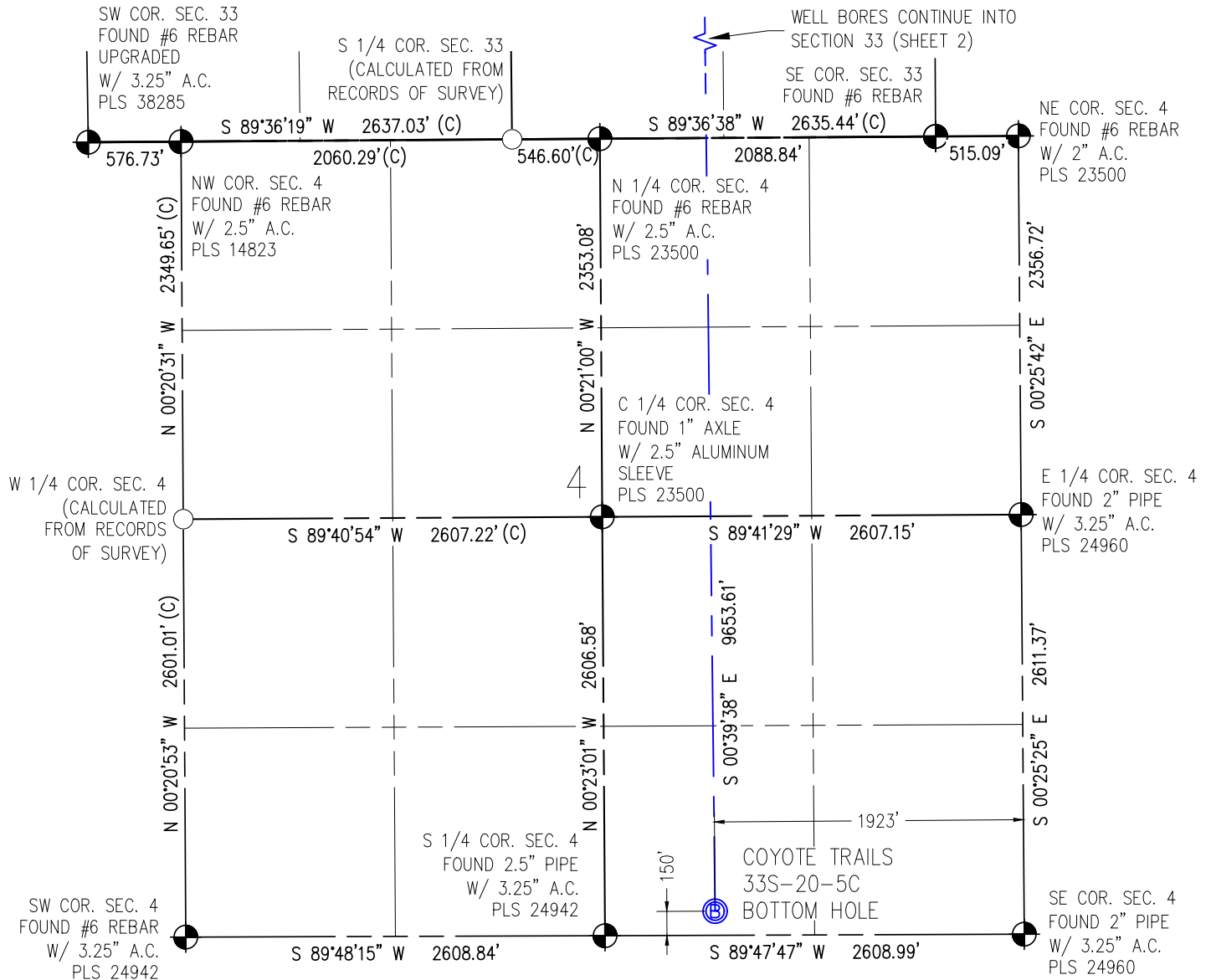
DRAWN BY	RPM	CHECKED BY	AAD
INITIAL SUBMITTAL	08/24/2017	REVISED	N/A
DRAWING SIZE	8.5" X 11"	JOB NO.	EXT01N68W28-01
SHEET	2 OF 3		



4007 S. LINCOLN AVENUE, SUITE 405 - LOVELAND, COLORADO 80537  
P: 970.353.7800 - F: 970.353.7801 - www.baselinecorp.com

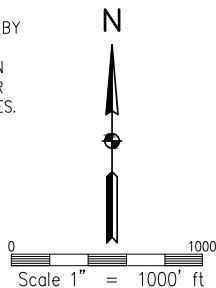
# WELL CERTIFICATION EXHIBIT COYOTE TRAILS 33S-20-5C

SW1/4 SE1/4 SEC. 28, T1N, R68W, 6TH P.M.



I HEREBY CERTIFY THAT THIS WELL LOCATION CERTIFICATE WAS PREPARED BY ME, OR UNDER MY DIRECT SUPERVISION, THAT THE FIELD WORK WAS COMPLETED ON 06/30/2017, THAT THIS IS NOT A LAND SURVEY PLAT OR AN IMPROVEMENT SURVEY PLAT, AND THAT IT IS NOT TO BE RELIED UPON FOR ESTABLISHMENT OF FENCE, BUILDING OR OTHER FUTURE IMPROVEMENT LINES.

AARON A. DEMO  
Professional Land Surveyor Registration No. 38285  
State of Colorado  
FOR AND ON BEHALF OF BASELINE ENGINEERING CORP.



SURFACE LOCATION  
SEC. 28, T1N, R68W  
GROUND ELEVATION = 5270'  
PDOP = 1.3  
LATITUDE = 40.017976°  
LONGITUDE = -105.007024°  
1148' FSL, 2229' FEL  
ENTRY POINT LOCATION  
SEC. 33, T1N, R68W  
LATITUDE = 40.013586°  
LONGITUDE = -105.004290°  
460' FNL, 1466' FEL  
BOTTOM HOLE LOCATION  
SEC. 4, T1S, R68W  
LATITUDE = 39.987093°  
LONGITUDE = -105.004086°  
150' FSL, 1923' FEL

## NOTES:

1. INDICATES SECTION CORNER
2. INDICATES CALCULATED CORNER
3. (C) INDICATES CALCULATED DIMENSION
4. ELEVATION BASED ON NAVD88 (GEOID12B)
5. BEARINGS DERIVED FROM COLORADO COORDINATE SYSTEM OF 1983 NORTH ZONE.
6. OPERATOR: TRAVIS WINNICKI
7. IMPROVEMENTS: SEE LOCATION DRAWING FOR ALL VISIBLE IMPROVEMENTS WITHIN 500' OF DISTURBED AREA.
8. WELL FOOTAGES ARE MEASURED AT RIGHT ANGLES TO THE SECTION LINES.

## NEAREST CULTURAL ITEMS:

BUILDING: 1464' SW  
BUILDING UNIT: 1464' SW  
HIGH OCCUPANCY BUILDING UNIT: 4713' SW  
DESIGNATED OUTSIDE ACTIVITY AREA: 5280'±  
PUBLIC ROAD: WELD COUNTY ROAD 4 1249' SW  
ABOVE GROUND UTILITY: 1695' S  
RAILROAD: 5280'±  
PROPERTY LINE: 445' W  
SURFACE USE: GRASSLAND.  
NEAREST EXISTING WELL: MEIKLE 28-1 519' SE



DRAWN BY	RPM	CHECKED BY	AAD
INITIAL SUBMITTAL	08/24/2017		
REVISED	N/A		
DRAWING SIZE	8.5" X 11"		
JOB NO.	EXT01N68W28-01		
SHEET	3 OF 3		

**BASELINE**  
Engineering - Planning - Surveying  
4007 S. LINCOLN AVENUE, SUITE 405 • LOVELAND, COLORADO 80537  
P: 970.353.7800 • F: 970.353.7801 • [www.baselinecorp.com](http://www.baselinecorp.com)