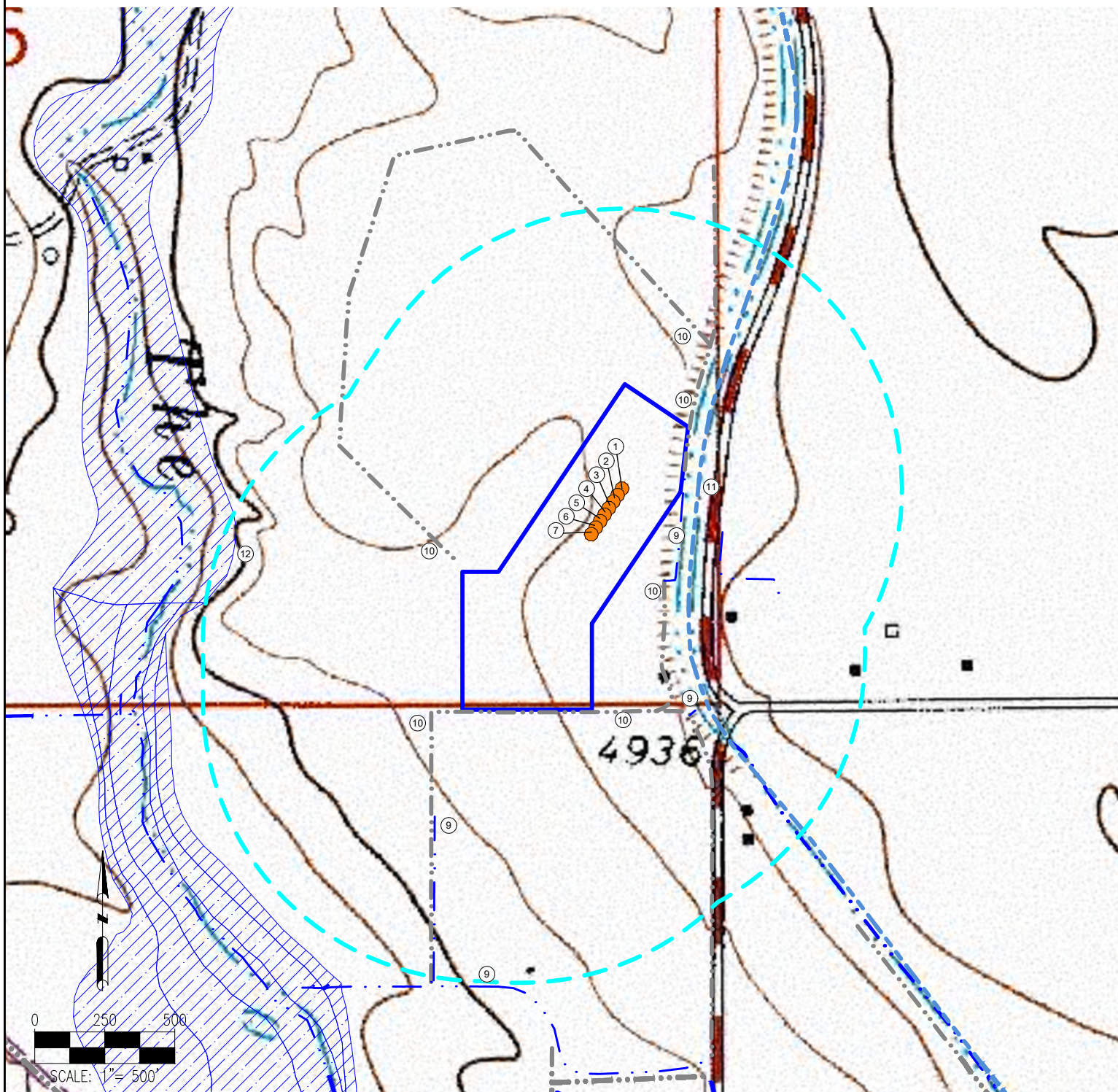


LAUNER 26-M PAD HYDROLOGY MAP



MEASUREMENTS ARE MADE FROM THE NEAREST EDGE OF THE DISTURBANCE AREA.

- | | | |
|-------------|--------------|--|
| 1. LAUNER 2 | 7. LAUNER 11 | 9. DITCHES ARE ±6° E, ±350' E, ±394' SW, ±987' S |
| 2. LAUNER 3 | 8. LAUNER 12 | 10. CONCRETE DITCHES ARE ±4° E, ±7° S, ±55' NW, ±112' SW, ±129' SE, ±285' NE |
| 3. LAUNER 5 | | 11. LARIMER AND WELD CANAL IS ± 60° E |
| 4. LAUNER 6 | | 12. FLOODPLAIN IS ±818' NW |
| 5. LAUNER 8 | | |
| 6. LAUNER 9 | | |

LEGEND:

- = PROPOSED WELL
- - - = DITCH
- - - - - = CANAL
- - - - - = CONCRETE DITCH
- ▨ = FLOODPLAIN
- ▭ = DISTURBANCE AREA
- - - - - = 1000' RADIUS

DISCLAIMER:
THIS PLOT DOES NOT REPRESENT A MONUMENTED LAND SURVEY AND SHOULD NOT BE RELIED UPON TO DETERMINE BOUNDARY LINES, PROPERTY OWNERSHIP OR OTHER PROPERTY INTERESTS. PARCEL LINES, IF DEPICTED HAVE NOT BEEN FIELD VERIFIED AND MAY BE BASED UPON PUBLICLY AVAILABLE DATA THAT ALSO HAS NOT BEEN INDEPENDENTLY VERIFIED.

DATA SOURCE:
TOPO MAP: USGS
NHD: USGS

PUBLICLY AVAILABLE DATA SOURCES HAVE NOT BEEN INDEPENDENTLY VERIFIED BY PFS.

7535 Hilltop Circle
Denver, CO 80221
(303) 928-7128
www.ascentgeomatics.com

FIELD DATE:
08-29-14

DRAWING DATE:
08-10-17

BY:
DJP

CHECKED BY:
MJW

SITE NAME:
LAUNER 26-M PAD

SURFACE LOCATION:
**SE 1/4 SE 1/4 SEC. 26, T7N, R67W, 6TH P.M.
WELD COUNTY, COLORADO**

PREPARED FOR: