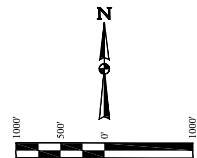


- LEGEND:**
- 90° SYMBOL
 - PROPOSED WELLHEAD
 - ◇ ENTRY POINT
 - BTM PERF.
 - TARGET BOTTOM HOLE
 - ▲ SECTION CORNERS LOCATED. (NAD 83)
 - △ SECTION CORNERS RE-ESTABLISHED. (Not Set on Grounds) (NAD 83)

T1N, R67W, 6th P.M.

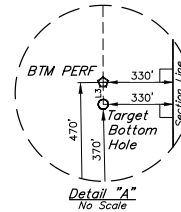
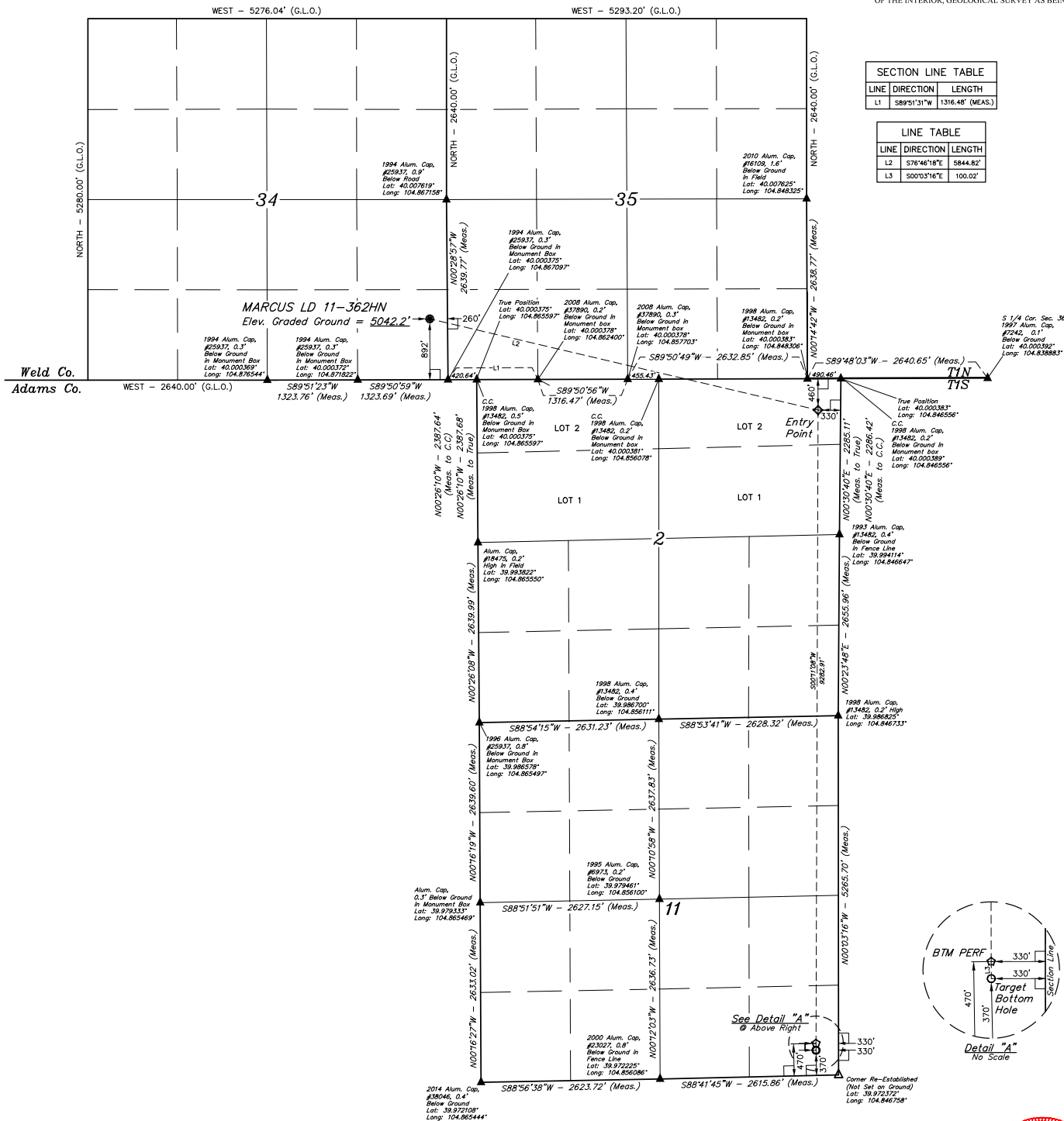


BASIS OF BEARINGS
BASIS OF BEARINGS IS A G.P.S. OBSERVATION

BASIS OF ELEVATION
BENCHMARK JR 53 5026 LOCATED IN THE SW 1/4 SE 1/4 OF SECTION 18, T1N, R68W, 6th P.M., TAKEN FROM 1988 PUBLISHED DATUM BY THE UNITED STATES DEPARTMENT OF THE INTERIOR, GEOLOGICAL SURVEY AS BEING 5028 FEET.

LINE	DIRECTION	LENGTH
L1	S89°51'31"W	1316.48' (MEAS.)

LINE	DIRECTION	LENGTH
L2	S76°46'18"E	5844.82'
L3	S00°3'16"E	100.02'



THIS IS TO CERTIFY THAT THE ABOVE DESCRIBED SURVEY WAS MADE IN ACCORDANCE WITH THE RULES AND REGULATIONS OF THE BOARD OF LAND SURVEYORS OF THE STATE OF COLORADO, AND THAT THE SAME ARE TRUE AND CORRECT TO THE BEST OF MY KNOWLEDGE AND BELIEF.

[Signature]
CHAD MEIERS, D.N.
REGISTERED LAND SURVEYOR
NO. 2588
STATE OF COLORADO, EXPIRES 03-10-17

REV: 1 07-07-17 D.COX (TBM MOVE & BTM PERF ADD)

GREAT WESTERN OPERATING COMPANY

MARCUS LD 11-362HN
SE 1/4 SE 1/4, SECTION 34, T1N, R67W, 6th P.M.
WELD COUNTY, COLORADO

PDOP = 1.2

NAD 83 (SURFACE LOCATION)	NAD 83 (ENTRY POINT)	NAD 83 (BTM PERF)	NAD 83 (TARGET BOTTOM HOLE)
LATITUDE = 40°00'10.17" (40.002825)	LATITUDE = 39°59'56.83" (39.999119)	LATITUDE = 39°58'25.12" (39.973644)	LATITUDE = 39°58'24.13" (39.973369)
LONGITUDE = 104°42'04.97" (104.668047)	LONGITUDE = 104°50'51.91" (104.847753)	LONGITUDE = 104°50'52.56" (104.847933)	LONGITUDE = 104°50'52.56" (104.847933)
NAD 27 (SURFACE LOCATION)	NAD 27 (ENTRY POINT)	NAD 27 (BTM PERF)	NAD 27 (TARGET BOTTOM HOLE)
LATITUDE = 40°00'10.23" (40.002842)	LATITUDE = 39°59'56.89" (39.999136)	LATITUDE = 39°58'25.18" (39.973661)	LATITUDE = 39°58'24.16" (39.973386)
LONGITUDE = 104°42'03.96" (104.667517)	LONGITUDE = 104°50'50.00" (104.847222)	LONGITUDE = 104°50'50.65" (104.847403)	LONGITUDE = 104°50'50.65" (104.847403)



UELS, LLC
Corporate Office * 85 South 200 East
Vernal, UT 84078 * (435) 789-1017

CHAD MEIERS, D.N.
REGISTERED LAND SURVEYOR
NO. 2588
STATE OF COLORADO, EXPIRES 03-10-17

SCALE
1" = 1000'

WELL LOCATION PLAT