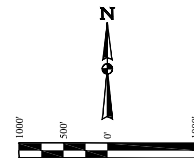


- LEGEND:**
- 90° SYMBOL
  - PROPOSED WELLHEAD
  - ◇ ENTRY POINT
  - BTM PERF.
  - TARGET BOTTOM HOLE
  - ▲ SECTION CORNERS LOCATED. (NAD 83)
  - △ SECTION CORNERS RE-ESTABLISHED. (Not Set on Grounds) (NAD 83)

T1N, R67W, 6th P.M.

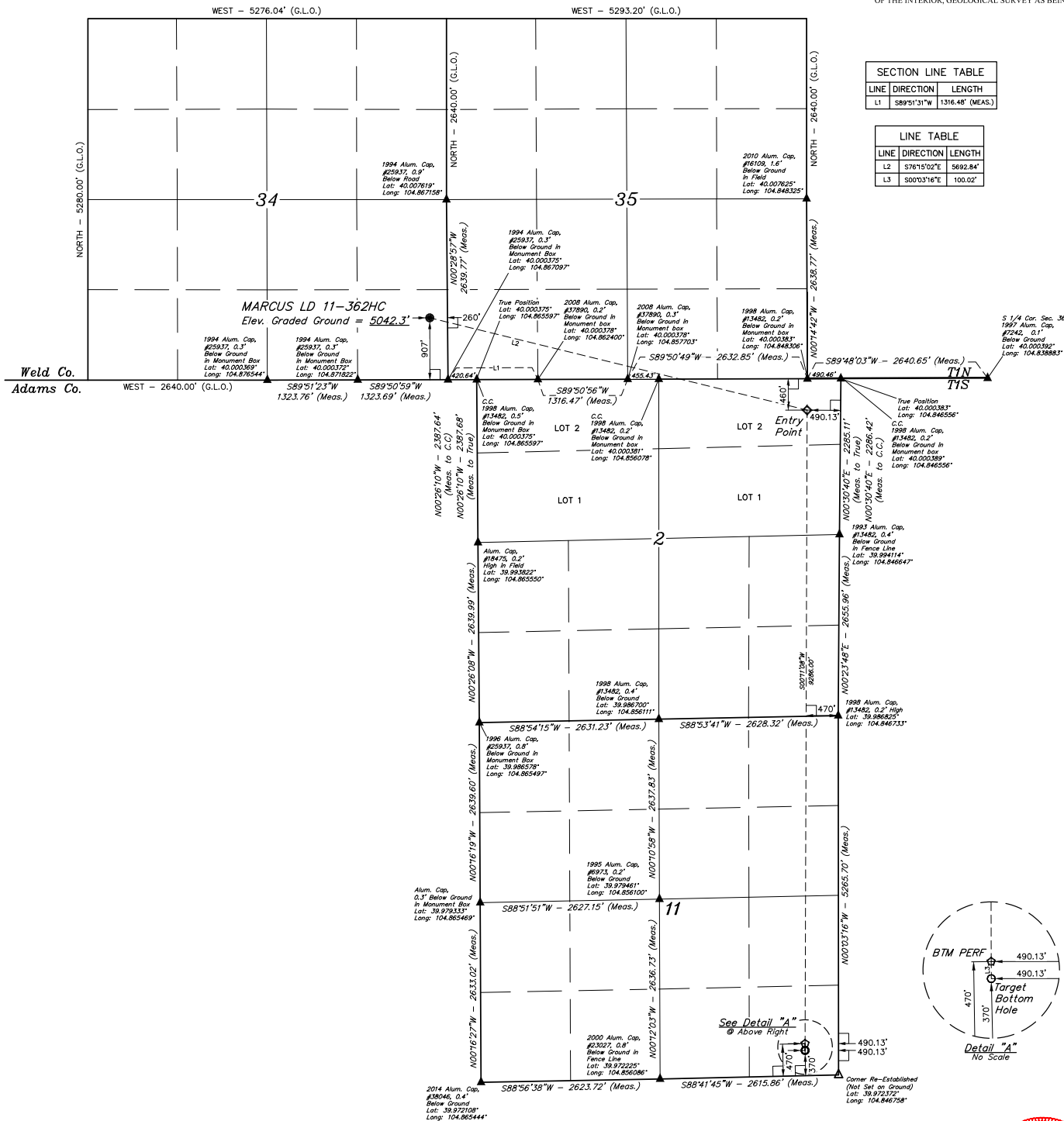


**BASIS OF BEARINGS**  
BASIS OF BEARINGS IS A G.P.S. OBSERVATION

**BASIS OF ELEVATION**  
BENCHMARK JR 53 5026 LOCATED IN THE SW 1/4 SE 1/4 OF SECTION 18, T1N, R68W, 6th P.M., TAKEN FROM 1988 PUBLISHED DATUM BY THE UNITED STATES DEPARTMENT OF THE INTERIOR, GEOLOGICAL SURVEY AS BEING 5028 FEET.

SECTION LINE TABLE		
LINE	DIRECTION	LENGTH
L1	S89°51'31"W	1316.48' (MEAS.)

LINE TABLE		
LINE	DIRECTION	LENGTH
L2	S76°15'02"E	5692.84'
L3	S00°03'16"E	100.02'



THIS IS TO CERTIFY THAT THE ABOVE DESCRIBED SURVEY WAS MADE BY THE UNDERSIGNED SURVEYOR IN ACCORDANCE WITH THE RULES AND REGULATIONS OF THE BOARD OF LAND SURVEYORS, STATE OF UTAH, AND THAT THE SAME ARE TRUE AND CORRECT TO THE BEST OF HIS KNOWLEDGE AND BELIEF.

*[Signature]*  
CHAD MEIERS, D.N.  
REGISTERED LAND SURVEYOR  
R.L.S. NO. 2588  
STATE OF UTAH, EXPIRES 03-10-17

REV: 1 07-07-17 D.COX (BTM MOVE & BTM PERF ADD)

**GREAT WESTERN OPERATING COMPANY**

MARCUS LD 11-362HC  
SE 1/4 SE 1/4, SECTION 34, T1N, R67W, 6th P.M.  
WELD COUNTY, COLORADO

PDOP = 1.3

NAD 83 (SURFACE LOCATION)	NAD 83 (ENTRY POINT)	NAD 83 (BTM PERF)	NAD 83 (TARGET BOTTOM HOLE)
LATITUDE = 40°00'10.32" (40.002867)	LATITUDE = 39°59'56.83" (39.999119)	LATITUDE = 39°58'25.09" (39.973636)	LATITUDE = 39°58'24.10" (39.973361)
LONGITUDE = 104°42'04.97" (104.668047)	LONGITUDE = 104°50'53.71" (104.848253)	LONGITUDE = 104°50'54.61" (104.848503)	LONGITUDE = 104°50'54.62" (104.848506)
NAD 83 (SURFACE LOCATION)	NAD 83 (ENTRY POINT)	NAD 83 (BTM PERF)	NAD 83 (TARGET BOTTOM HOLE)
LATITUDE = 40°00'10.37" (40.002881)	LATITUDE = 39°59'56.80" (39.999136)	LATITUDE = 39°58'25.18" (39.973633)	LATITUDE = 39°58'24.16" (39.973378)
LONGITUDE = 104°42'03.96" (104.667517)	LONGITUDE = 104°50'51.80" (104.847722)	LONGITUDE = 104°50'52.71" (104.847975)	LONGITUDE = 104°50'52.71" (104.847975)

WELL LOCATION PLAT			
SURVEYED BY	CHAD MEIERS, D.N.	03-06-17	SCALE
DRAWN BY	K.B.	03-10-17	1" = 1000'

UELS, LLC  
Corporate Office • 85 South 200 East  
Vernal, UT 84078 • (435) 789-1017