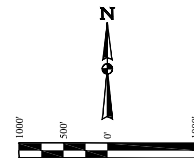


- LEGEND:**
- 90° SYMBOL
 - PROPOSED WELLHEAD
 - ◇ ENTRY POINT
 - BTM PERF.
 - TARGET BOTTOM HOLE
 - ▲ SECTION CORNERS LOCATED. (NAD 83)
 - △ SECTION CORNERS RE-ESTABLISHED. (Not Set on Grounds) (NAD 83)

T1N, R67W, 6th P.M.

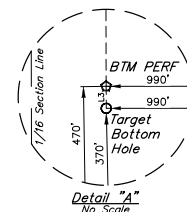
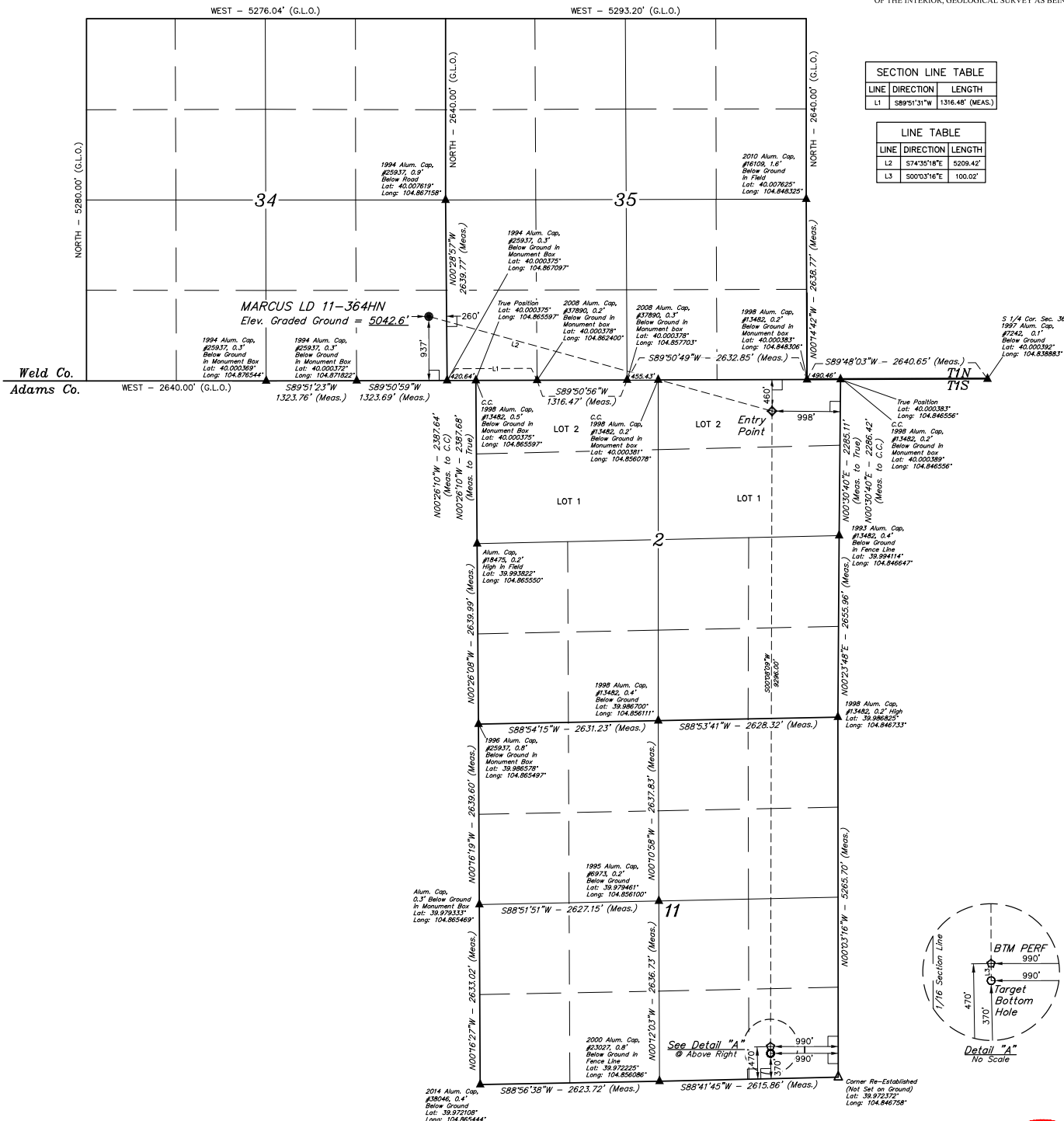


BASIS OF BEARINGS
BASIS OF BEARINGS IS A G.P.S. OBSERVATION

BASIS OF ELEVATION
BENCHMARK JR 53 5026 LOCATED IN THE SW 1/4 SE 1/4 OF SECTION 18, T1N, R68W, 6th P.M., TAKEN FROM 1988 PUBLISHED DATUM BY THE UNITED STATES DEPARTMENT OF THE INTERIOR, GEOLOGICAL SURVEY AS BEING 5028 FEET.

| LINE | DIRECTION | LENGTH |
|------|-------------|------------------|
| L1 | S89°51'31"W | 1316.48' (MEAS.) |

| LINE | DIRECTION | LENGTH |
|------|-------------|----------|
| L2 | S74°35'18"E | 5209.42' |
| L3 | S00°03'16"E | 100.02' |



THIS IS TO CERTIFY THAT THE ABOVE INFORMATION IS A TRUE AND CORRECT REPRESENTATION OF THE ACTUAL SURVEY MADE AND THAT THE SAME ARE TRUE AND CORRECT TO THE BEST OF THE SURVEYOR'S KNOWLEDGE AND BELIEF.

[Signature]
REGISTERED LAND SURVEYOR
R.L.S. NO. 3588
STATE OF COLORADO, EXPIRES 12-31-17

REV: 1 07-07-17 D.COX (TBM MOVE & BTM PERF ADD)

GREAT WESTERN OPERATING COMPANY

MARCUS LD 11-364HN
SE 1/4 SE 1/4, SECTION 34, T1N, R67W, 6th P.M.
WELD COUNTY, COLORADO

PDOP = 1.3

| NAD 83 (SURFACE LOCATION) | NAD 83 (ENTRY POINT) | NAD 83 (BTM PERF.) | NAD 83 (TARGET BOTTOM HOLE) |
|--|--|--|--|
| LATITUDE = 40°00'10.61" (40.002947) | LATITUDE = 39°59'56.83" (39.999119) | LATITUDE = 39°58'24.99" (39.973688) | LATITUDE = 39°58'24.00" (39.973333) |
| LONGITUDE = 104°20'04.97" (104.668047) | LONGITUDE = 104°51'00.49" (104.850130) | LONGITUDE = 104°51'01.03" (104.850280) | LONGITUDE = 104°51'01.04" (104.850289) |
| NAD 27 (SURFACE LOCATION) | NAD 27 (ENTRY POINT) | NAD 27 (BTM PERF.) | NAD 27 (TARGET BOTTOM HOLE) |
| LATITUDE = 40°00'10.67" (40.002944) | LATITUDE = 39°59'56.89" (39.999130) | LATITUDE = 39°58'25.04" (39.973622) | LATITUDE = 39°58'24.06" (39.973350) |
| LONGITUDE = 104°20'03.96" (104.667517) | LONGITUDE = 104°50'58.58" (104.849606) | LONGITUDE = 104°50'59.13" (104.849758) | LONGITUDE = 104°50'59.13" (104.849758) |

| SURVEYED BY | CHAD MEIERS, D.N. | 03-06-17 | SCALE |
|---------------------------|-------------------|----------|------------|
| DRAWN BY | K.B. | 03-10-17 | 1" = 1000' |
| WELL LOCATION PLAT | | | |

UELS, LLC
Corporate Office • 85 South 200 East
Vernal, UT 84078 • (435) 789-1017