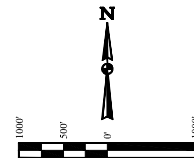


- LEGEND:**
- 90° SYMBOL
 - PROPOSED WELLHEAD
 - ENTRY POINT
 - BTM PERF.
 - TARGET BOTTOM HOLE
 - SECTION CORNERS LOCATED. (NAD 83)
 - SECTION CORNERS RE-ESTABLISHED. (Not Set on Ground.) (NAD 83)

T1N, R67W, 6th P.M.

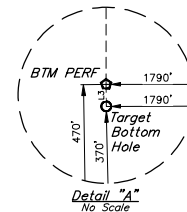
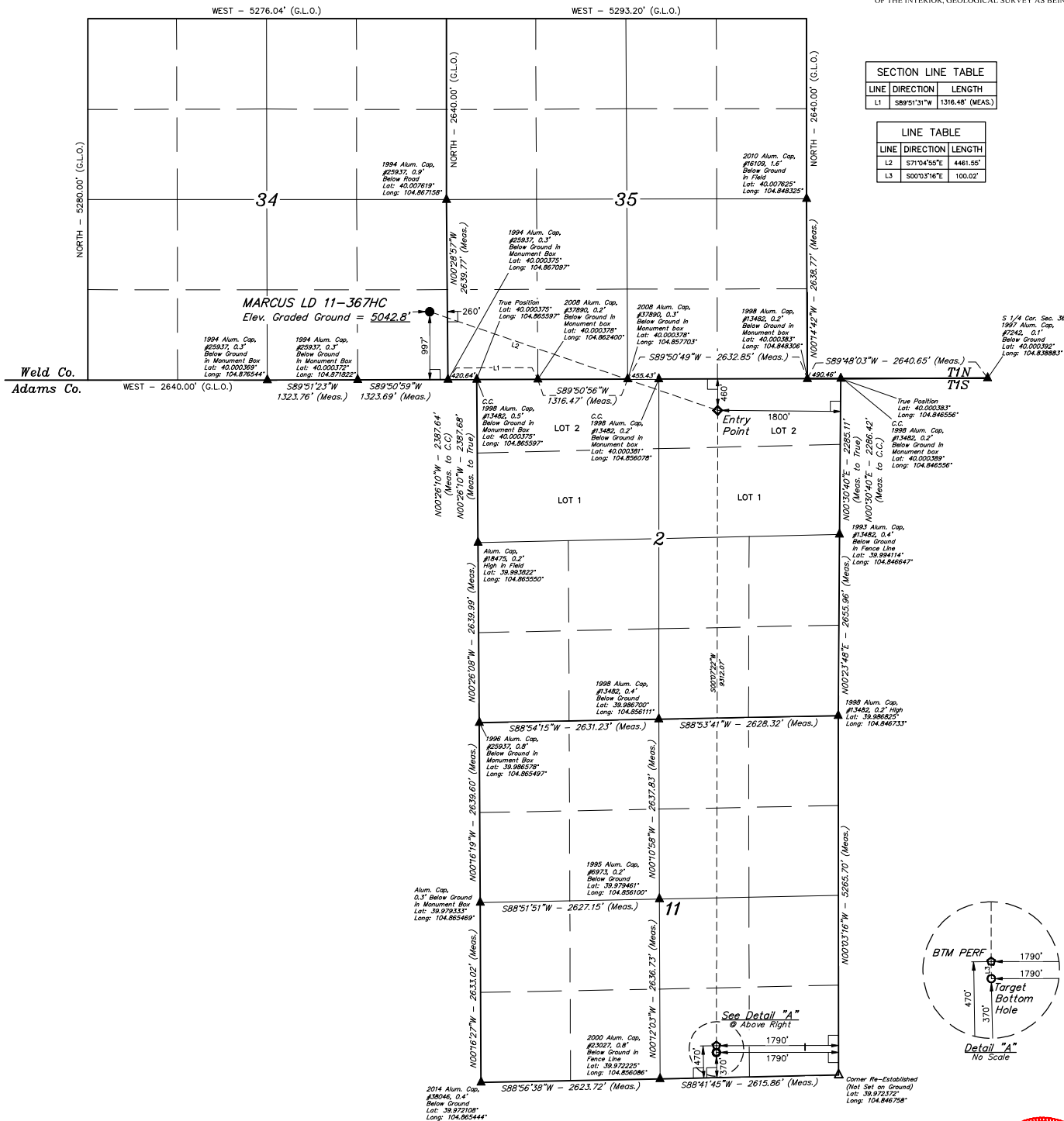


BASIS OF BEARINGS
BASIS OF BEARINGS IS A G.P.S. OBSERVATION

BASIS OF ELEVATION
BENCHMARK JR 53 5026 LOCATED IN THE SW 1/4 SE 1/4 OF SECTION 18, T1N, R68W, 6th P.M., TAKEN FROM 1988 PUBLISHED DATUM BY THE UNITED STATES DEPARTMENT OF THE INTERIOR, GEOLOGICAL SURVEY AS BEING 5028 FEET.

LINE	DIRECTION	LENGTH
L1	S89°51'31"W	1316.48' (MEAS.)

LINE	DIRECTION	LENGTH
L2	S71°04'55"E	4461.55'
L3	S00°03'16"E	100.02'



CERTIFICATE OF REGISTRATION
THIS IS TO CERTIFY THAT THE ABOVE DESCRIBED SURVEY WAS MADE AND CONDUCTED BY THE SURVEYOR AND THAT THE SAME ARE TRUE AND CORRECT TO THE BEST OF HIS KNOWLEDGE AND BELIEF.
RECEIVED AND EXAMINED
HARRIS COUNTY CLERK
STATISTICAL DEPARTMENT
JAN 17 2017

REV: 1 07-07-17 D.COX (TBM MOVE & BTM PERF ADD)

GREAT WESTERN OPERATING COMPANY

MARCUS LD 11-367HC
SE 1/4 SE 1/4, SECTION 34, T1N, R67W, 6th P.M.
WELD COUNTY, COLORADO

PDOP = 1.1

NAD 83 (SURFACE LOCATION)	NAD 83 (ENTRY POINT)	NAD 83 (BTM PERF)	NAD 83 (TARGET BOTTOM HOLE)
LATITUDE = 40°00'11.20" (40.003111)	LATITUDE = 39°59'56.83" (39.999119)	LATITUDE = 39°58'24.82" (39.973561)	LATITUDE = 39°58'23.84" (39.973289)
LONGITUDE = 104°20'04.98" (104.333605)	LONGITUDE = 104°51'10.79" (104.852997)	LONGITUDE = 104°51'11.31" (104.853142)	LONGITUDE = 104°51'11.31" (104.853142)
NAD 83 (SURFACE LOCATION)	NAD 83 (ENTRY POINT)	NAD 83 (BTM PERF)	NAD 83 (TARGET BOTTOM HOLE)
LATITUDE = 40°00'11.20" (40.003111)	LATITUDE = 39°59'56.83" (39.999119)	LATITUDE = 39°58'24.82" (39.973561)	LATITUDE = 39°58'23.84" (39.973289)
LONGITUDE = 104°20'04.98" (104.333605)	LONGITUDE = 104°51'10.79" (104.852997)	LONGITUDE = 104°51'11.31" (104.853142)	LONGITUDE = 104°51'11.31" (104.853142)

SURVEYED BY	CHAD MEIERS, D.N.	03-06-17	SCALE
DRAWN BY	R.B.	03-10-17	1" = 1000'
WELL LOCATION PLAT			

UELS, LLC
Corporate Office • 85 South 200 East
Vernal, UT 84078 • (435) 789-1017