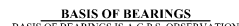
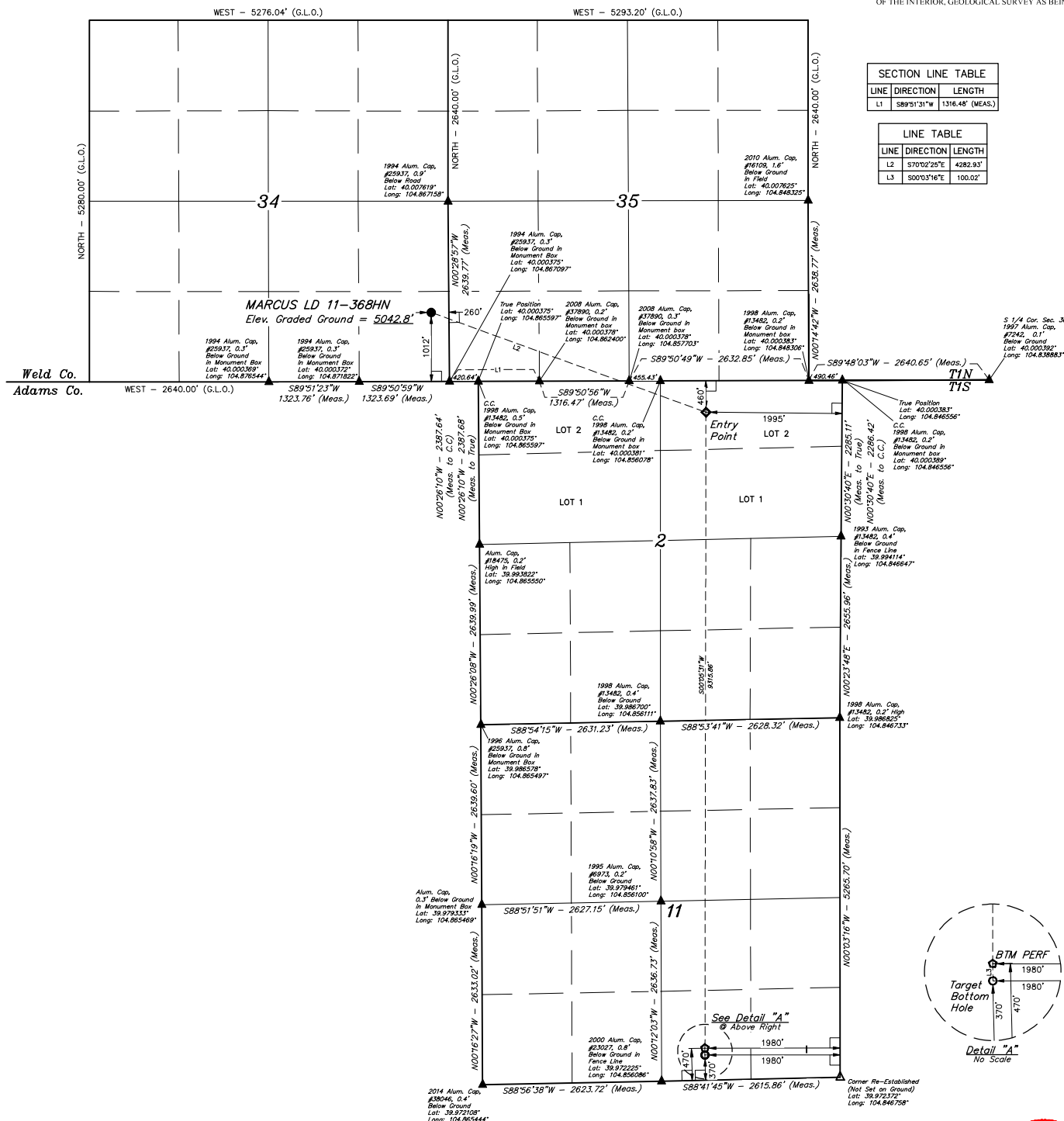


T1N, R67W, 6th P.M.



BENCHMARK JR 53 5026 LOCATED IN THE SW 1/4 SE 1/4
OF SECTION 18, T1N, R68W, 6th P.M., TAKEN FROM 1988
PUBLISHED DATUM BY THE UNITED STATES DEPARTMENT
OF THE INTERIOR, GEOLOGICAL SURVEY AS BEING 5028 FEET

LINE TABLE		
LINE	DIRECTION	LENGTH
L2	S70°02'25"E	4282.93
L3	S00°03'16"E	100.02'



CERTIFICATE

THIS IS TO CERTIFY THAT THE ABOVE AND FOREGOING PARCELS AND UNDIVIDED NOTES OF ACTUAL SURVEYS MADE BY ME AND UNDER MY SUPERVISION AND THAT THE SAME ARE TRUE AND CORRECT TO THE BEST OF MY KNOWLEDGE AND BELIEF.

REGISTERED LAND SURVEYOR
REGISTRATION NO. 28285
STATE OF OHIO

2017

REV: 1 07-07-17 D.COX (TBH MOVE & BTM PERF ADD)

GREAT WESTERN OPERATING COMPANY

MARCUS LD 11-368HN
SE 1/4 SE 1/4, SECTION 34, T1N, R67W, 6th P.M.
WELD COUNTY, COLORADO

PDOP = 1.1

NAD 83 (SURFACE LOCATION)	NAD 83 (ENTRY POINT)	NAD 83 (BTM PERF)	NAD 83 (TARGET BOTTOM HOLD)
LONGITUDE = 40°07'11.35" (40.013135)	LONGITUDE = 39°59'56.83" (39.999119)	LONGITUDE = 39°58'24.74" (39.973553)	LONGITUDE = 39°58'23.88" (39.973278)
LATITUDE = 104°52'09.98" (104.869505)	LATITUDE = 104°53'31.33" (104.85694)	LONGITUDE = 104°53'13.75" (104.85361)	LONGITUDE = 104°53'11.74" (104.85189)
NAD 83 (SURFACE LOCATION)	NAD 83 (ENTRY POINT)	NAD 83 (BTM PERF)	NAD 83 (TARGET BOTTOM HOLD)
LONGITUDE = 40°07'11.47" (40.013147)	LONGITUDE = 39°59'56.83" (39.999133)	LONGITUDE = 39°58'24.84" (39.97356)	LONGITUDE = 39°58'23.88" (39.97328)
LATITUDE = 104°52'09.97" (104.867519)	LONGITUDE = 104°53'31.33" (104.85616)	LONGITUDE = 104°53'14.74" (104.85789)	LONGITUDE = 104°53'11.74" (104.85528)



UELS, LLC
Corporate Office * 85 South 200 East
Vernal, UT 84078 * (435) 789-1017

SURVEYED BY	CHAD MEIERS, D.N.	03-06-17	SCALE
DRAWN BY	K.B.	03-10-17	1" = 1000'

WELL LOCATION PLAT