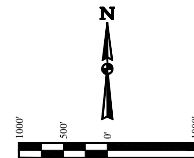
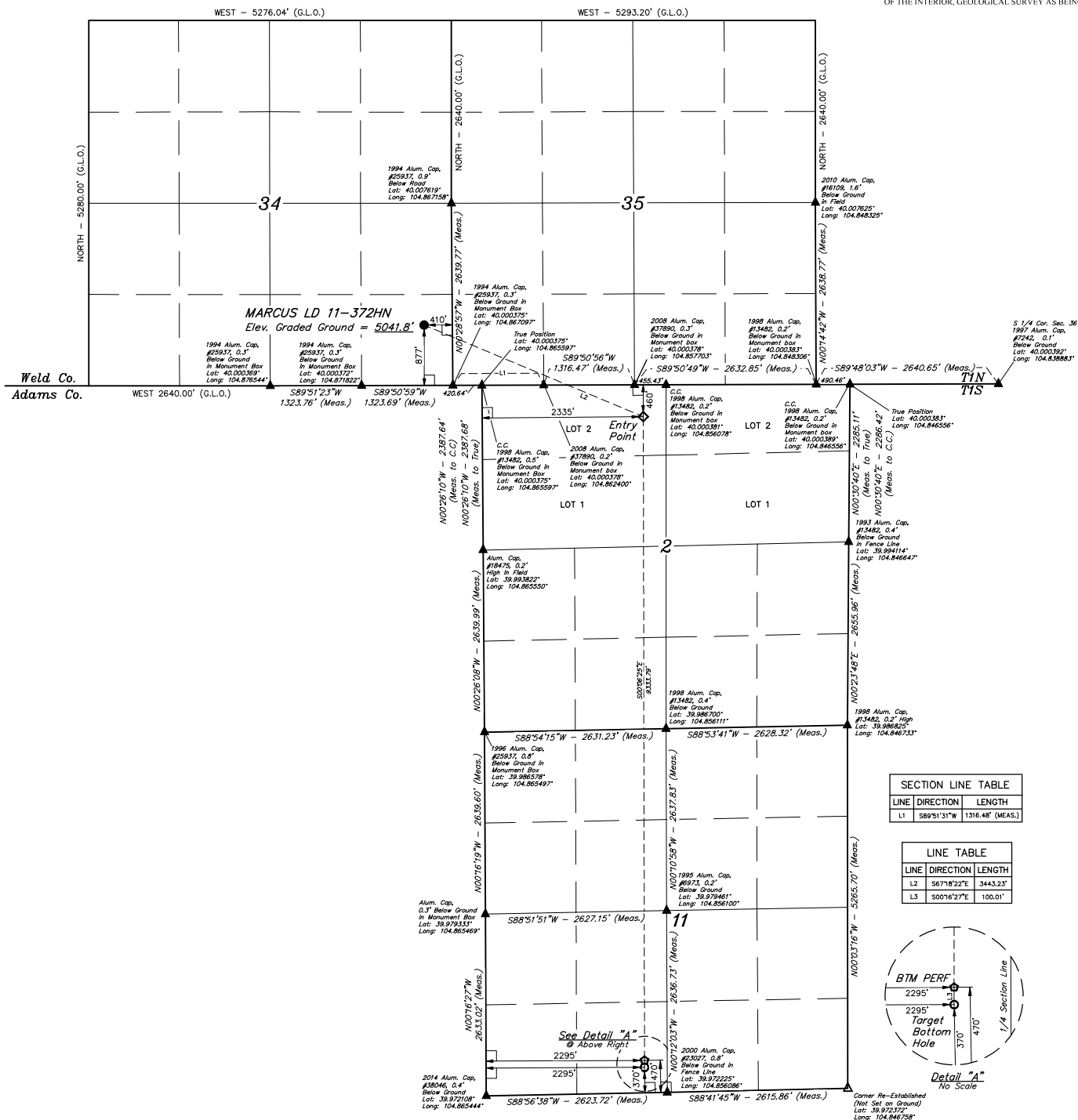


T1N, R67W, 6th P.M.



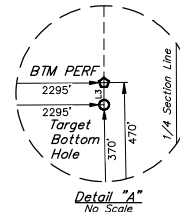
BASIS OF BEARINGS

BENCHMARK JR 53 5026 LOCATED IN THE SW 1/4 SE 1/4
OF SECTION 18, T1N, R68W, 6th P.M., TAKEN FROM 1988
PUBLISHED DATUM BY THE UNITED STATES DEPARTMENT
OF THE INTERIOR, GEOLOGICAL SURVEY AS BEING 5028 FEET.



SECTION LINE TABLE		
LINE	DIRECTION	LENGTH
1.1	S89°51'33"W	1316.48' (MEAS)

LINE TABLE		
LINE	DIRECTION	LENGTH
L2	S67°18'22"E	3443.2
L3	S00°16'27"E	100.01



CERTIFICATE

THIS IS TO CERTIFY THAT THE ABOVE IS A TRUE AND CORRECT COPY OF THE
NOTES OF ACTUAL SURVEYS MADE IN MY OFFICE UNDER MY SUPERVISION,
AND THAT THE SAME ARE TRUE AND CORRECT TO THE BEST OF MY
KNOWLEDGE AND BELIEF.



REV: 1 07-07-17 D.COX (TBH MOVE & BTM PERF ADD)

GREAT WESTERN OPERATING COMPANY

MARCUS LD 11-372HN
SE 1/4 SE 1/4, SECTION 34, T1N, R67W, 6th P.M.
WELD COUNTY, COLORADO

PDOP = 1.2

NAD 83 (SURFACE LOCATION)	NAD 83 (ENTRY POINT)	NAD 83 (BTM PERM)	NAD 83 (TARGET BOTTOM HOLE)
LATITUDE = 40°00'0.00" (40.002781)	LATITUDE = 39°59'56.82" (39.999117)	LATITUDE = 39°58'24.60" (39.973500)	LATITUDE = 39°58'23.61" (39.973225)
LONGITUDE = 104°52'59.98" (104.882658)	LONGITUDE = 104°52'13.12" (104.872560)	LONGITUDE = 104°51'52.15" (104.863764)	LONGITUDE = 104°51'48.16" (104.862852)
NAD 27 (SURFACE LOCATION)	NAD 27 (ENTRY POINT)	NAD 27 (BTM PERM)	NAD 27 (TARGET BOTTOM HOLE)
LATITUDE = 40°00'0.00" (40.002797)	LATITUDE = 39°59'56.84" (39.999125)	LATITUDE = 39°58'24.60" (39.973517)	LATITUDE = 39°58'23.61" (39.973262)
LONGITUDE = 104°52'59.98" (104.882690)	LONGITUDE = 104°52'13.24" (104.885673)	LONGITUDE = 104°51'52.24" (104.863763)	LONGITUDE = 104°51'42.24" (104.856732)



UELS, LLC
Corporate Office * 85 South 200 East
Vernal, UT 84078 * (435) 789-1017

ENGINEERING & LAND SURVEYING			
SURVEYED BY	CHAD MEIERS, D.N.	03-06-17	SCALE
DRAWN BY	K.B.	03-10-17	1" = 1000'
WELL LOCATION PLAT			