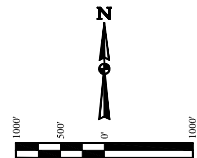


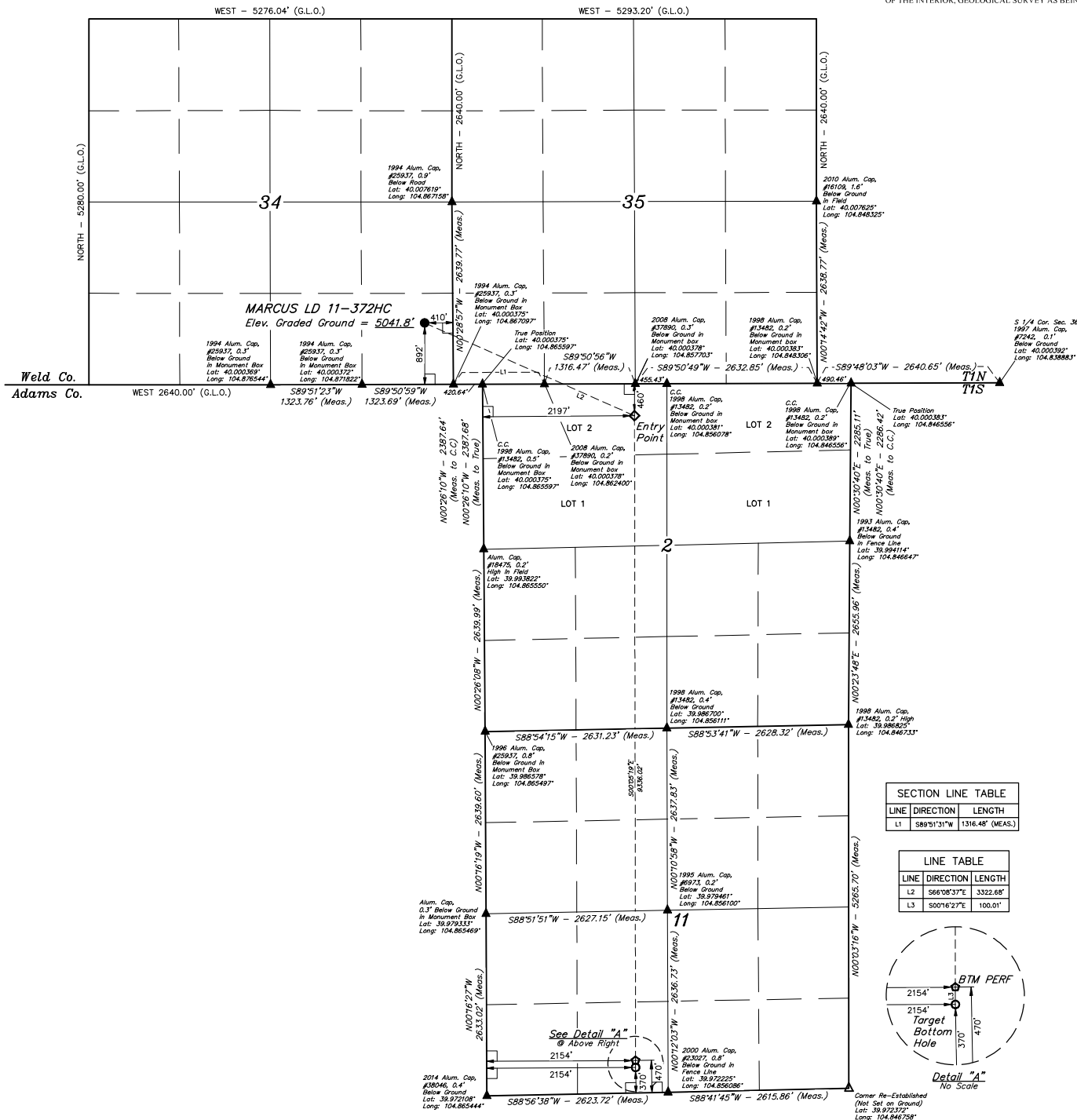
- LEGEND:**
- 90° SYMBOL
 - PROPOSED WELLHEAD
 - ◊ ENTRY POINT
 - BTM PERF.
 - TARGET BOTTOM HOLE
 - ▲ SECTION CORNERS LOCATED. (NAD 83)
 - △ SECTION CORNERS RE-ESTABLISHED. (Not Set on Grounds.) (NAD 83)

T1N, R67W, 6th P.M.



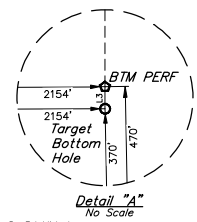
BASIS OF BEARINGS
BASIS OF BEARINGS IS A G.P.S. OBSERVATION
BASIS OF ELEVATION

BENCHMARK JR 53 5026 LOCATED IN THE SW 1/4 SE 1/4 OF SECTION 18, T1N, R68W, 6th P.M., TAKEN FROM 1988 PUBLISHED DATUM BY THE UNITED STATES DEPARTMENT OF THE INTERIOR, GEOLOGICAL SURVEY AS BEING 5028 FEET.



SECTION LINE TABLE		
LINE	DIRECTION	LENGTH
L1	S89°51'31"W	1316.48' (MEAS.)

LINE TABLE		
LINE	DIRECTION	LENGTH
L2	S66°08'37"E	3322.68'
L3	S00°16'27"E	100.01'



CERTIFICATE OF REGISTRATION
THIS IS TO CERTIFY THAT THE ABOVE DESCRIBED SURVEY WAS MADE AND CONDUCTED BY ME OR UNDER MY CLOSE PERSONAL SUPERVISION AND THAT THE SAME ARE TRUE AND CORRECT TO THE BEST OF MY KNOWLEDGE AND BELIEF.
[Signature]
REGISTERED PROFESSIONAL SURVEYOR
STATE OF COLORADO NO. 36388
EXPIRATION DATE 07-15-17

REV: 1 07-07-17 D.COX (BTM MOVE & BTM PERF ADD)

GREAT WESTERN OPERATING COMPANY

MARCUS LD 11-372HC
SE 1/4 SE 1/4, SECTION 34, T1N, R67W, 6th P.M.
WELD COUNTY, COLORADO

PDOP = 1.4

NAD 83 (SURFACE LOCATION)	NAD 83 (ENTRY POINT)	NAD 83 (BTM PERF)	NAD 83 (TARGET BOTTOM HOLE)
LATITUDE = 40°00'10.16" (40.002822)	LATITUDE = 39°59'56.82" (39.999117)	LATITUDE = 39°58'24.58" (39.973494)	LATITUDE = 39°58'23.59" (39.973219)
LONGITUDE = 104°52'06.89" (104.868581)	LONGITUDE = 104°51'27.89" (104.857747)	LONGITUDE = 104°51'27.96" (104.857767)	LONGITUDE = 104°51'27.95" (104.857767)
NAD 27 (SURFACE LOCATION)	NAD 27 (ENTRY POINT)	NAD 27 (BTM PERF)	NAD 27 (TARGET BOTTOM HOLE)
LATITUDE = 40°00'10.23" (40.002839)	LATITUDE = 39°59'56.88" (39.999133)	LATITUDE = 39°58'24.64" (39.973511)	LATITUDE = 39°58'23.65" (39.973266)
LONGITUDE = 104°52'04.99" (104.868653)	LONGITUDE = 104°51'25.98" (104.857217)	LONGITUDE = 104°51'26.05" (104.857236)	LONGITUDE = 104°51'26.05" (104.857236)

UITS, LLC
Corporate Office * 85 South 200 East
Vernal, UT 84078 * (435) 789-1017

SURVEYED BY CHAD MEJERS, D.N. 03-06-17
DRAWN BY K.B. 03-10-17
SCALE 1" = 1000'

WELL LOCATION PLAT