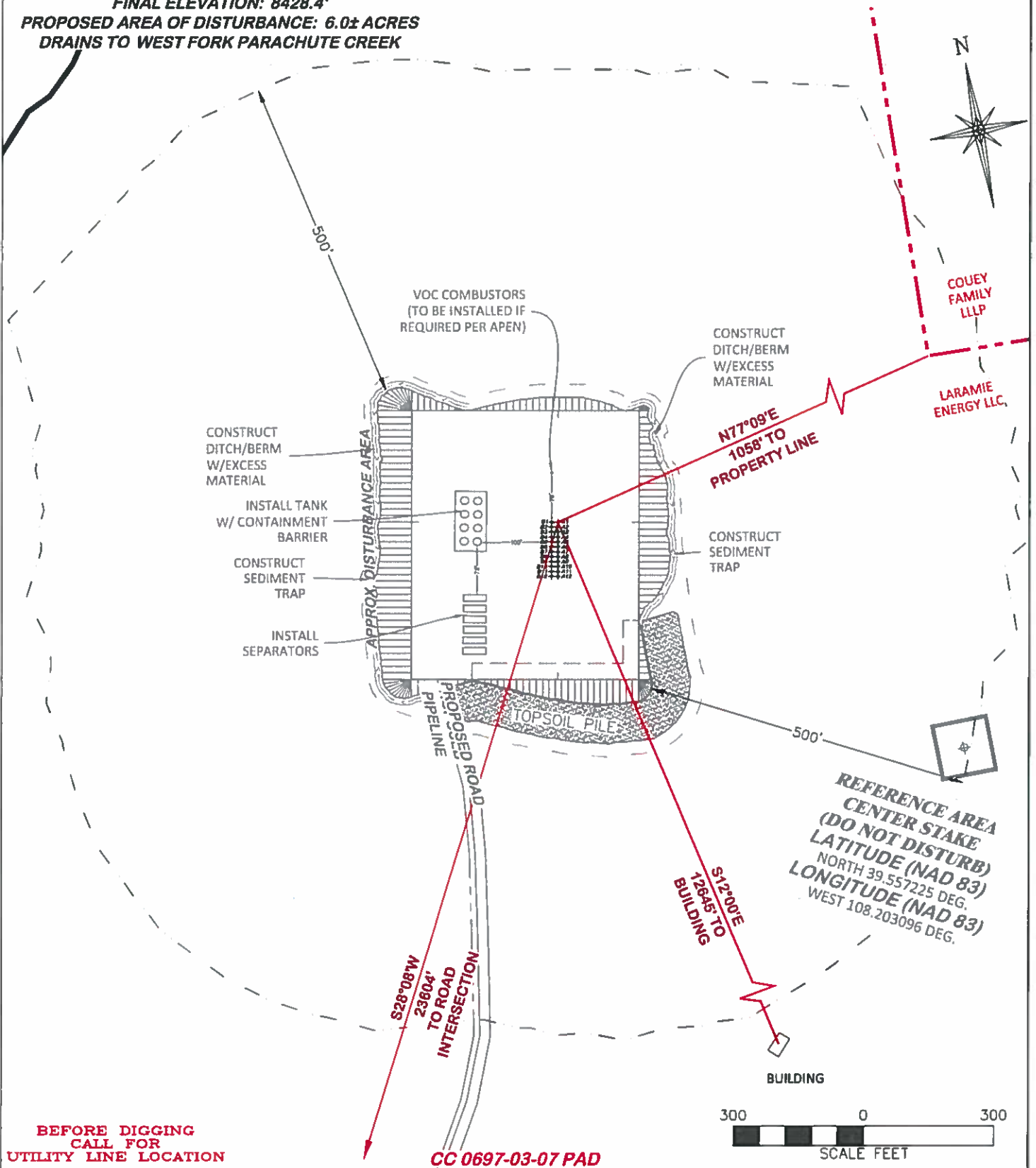


UNGRADED ELEVATION: 8438.0'

FINAL ELEVATION: 8428.4'

PROPOSED AREA OF DISTURBANCE: 6.0± ACRES
DRAINS TO WEST FORK PARACHUTE CREEK

LOCATION DRAWING



BEFORE DIGGING
CALL FOR
UTILITY LINE LOCATION

CC 0697-03-07 PAD

300 0 300
SCALE FEET



RIFFIN & ASSOCIATES, INC.

(307) 382-5028

1414 ELK ST., ROCK SPRINGS, WY 82901

DRAWN: 8/23/2017 - TCM

SCALE: 1" = 300'

REVISED: N/A - .

DRG JOB No. 21295

LOC DWG

LOCATION DRAWING

LARAMIE ENERGY, LLC.

CC 0697-03-07

LOT 11, SECTION 3, T.6 S., R.97 W., 6th P.M.,
GARFIELD COUNTY, COLORADO