

UNGRADED ELEVATION: 8438.0'

FINAL ELEVATION: 8428.4'

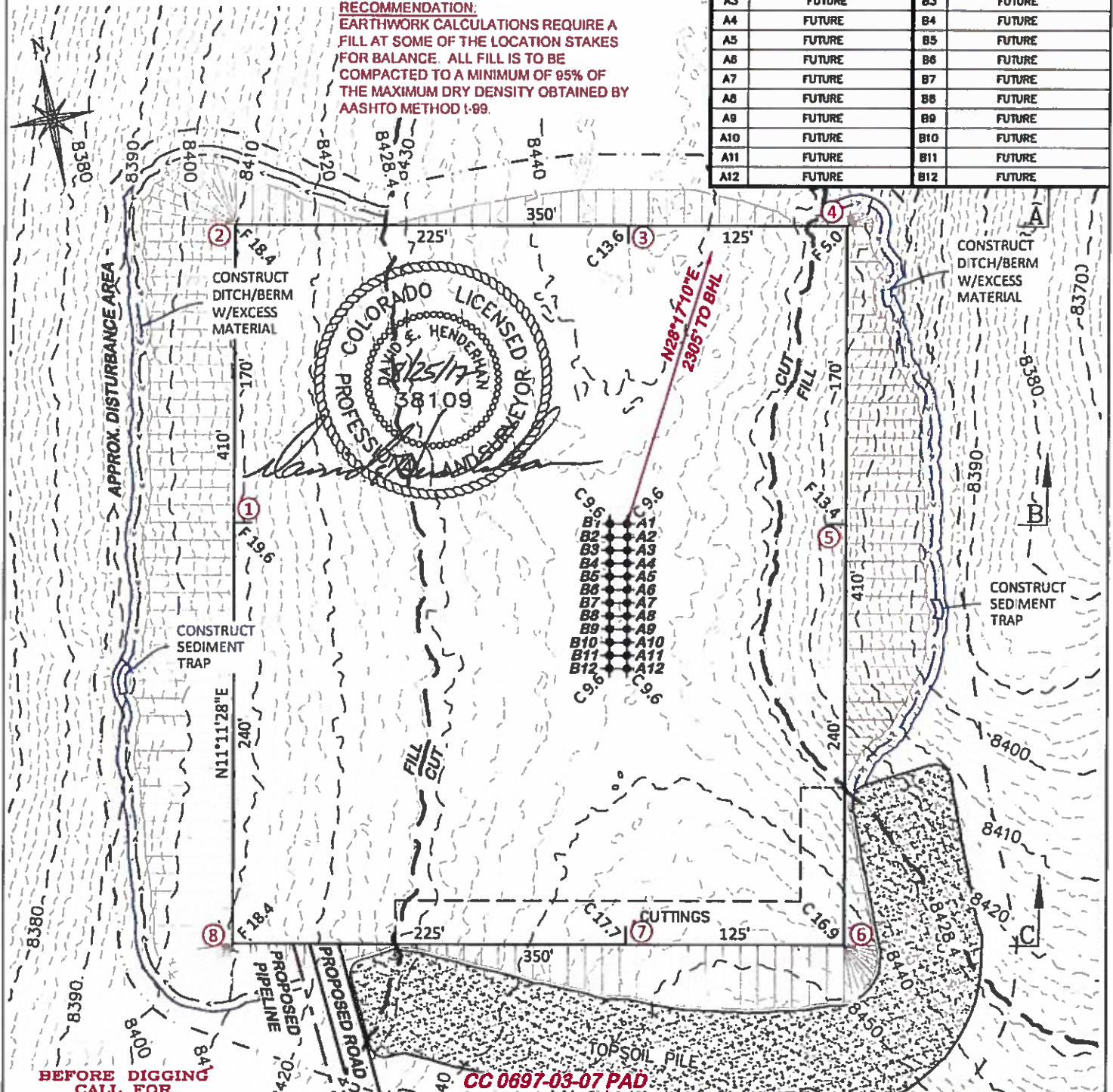
PROPOSED AREA OF DISTURBANCE: 8.0± ACRES
DRAINS TO WEST FORK PARACHUTE CREEK

ESTIMATED EARTHWORK

RECOMMENDATION:
EARTHWORK CALCULATIONS REQUIRE A
FILL AT SOME OF THE LOCATION STAKES
FOR BALANCE. ALL FILL IS TO BE
COMPACTED TO A MINIMUM OF 95% OF
THE MAXIMUM DRY DENSITY OBTAINED BY
AASHTO METHOD 1-99.

CC 0697-03-07 PAD

SLOT	WELL	SLOT	WELL
A1	CC FEDERAL 0697-03-01E	B1	FUTURE
A2	FUTURE	B2	FUTURE
A3	FUTURE	B3	FUTURE
A4	FUTURE	B4	FUTURE
A5	FUTURE	B5	FUTURE
A6	FUTURE	B6	FUTURE
A7	FUTURE	B7	FUTURE
A8	FUTURE	B8	FUTURE
A9	FUTURE	B9	FUTURE
A10	FUTURE	B10	FUTURE
A11	FUTURE	B11	FUTURE
A12	FUTURE	B12	FUTURE



**BEFORE DIGGING
CALL FOR
UTILITY LINE LOCATION**

NOTE: THE EARTH QUANTITIES ON
THIS DRAWING ARE ESTIMATED AND
THE USE OF SAID QUANTITIES IS AT
THE RESPONSIBILITY OF THE USER.

CONSTRUCTION LAYOUT DRAWING 1 OF 5

LARAMIE ENERGY, LLC.

CC 0697-03-07

**LOT 11, SECTION 3, T. 6 S., R. 97 W., 6th P.M.,
GARFIELD COUNTY, COLORADO**

ESTIMATED EARTHWORK

ITEM	CUT	FILL	TOPSOIL	EXCESS
PAD	31,005 CY	27,461 CY	3,534 CY	10 CY
PIT	NONE			NONE
TOTALS	31,005 CY	27,461 CY	3,534 CY	10 CY



RIFFIN & ASSOCIATES, INC.

(307) 362-5028

1414 ELK ST., ROCK SPRINGS, WY 82901

DRAWN: 8/23/2017 - TCM

SCALE: 1" = 80'

REVISED: N/A -

DRG JOB No. 21295

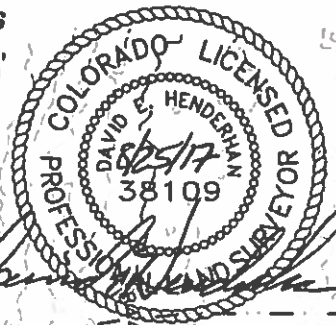
1 EARTHWORK

UNGRADED ELEVATION: 8438.0'

FINAL ELEVATION: 8428.4'

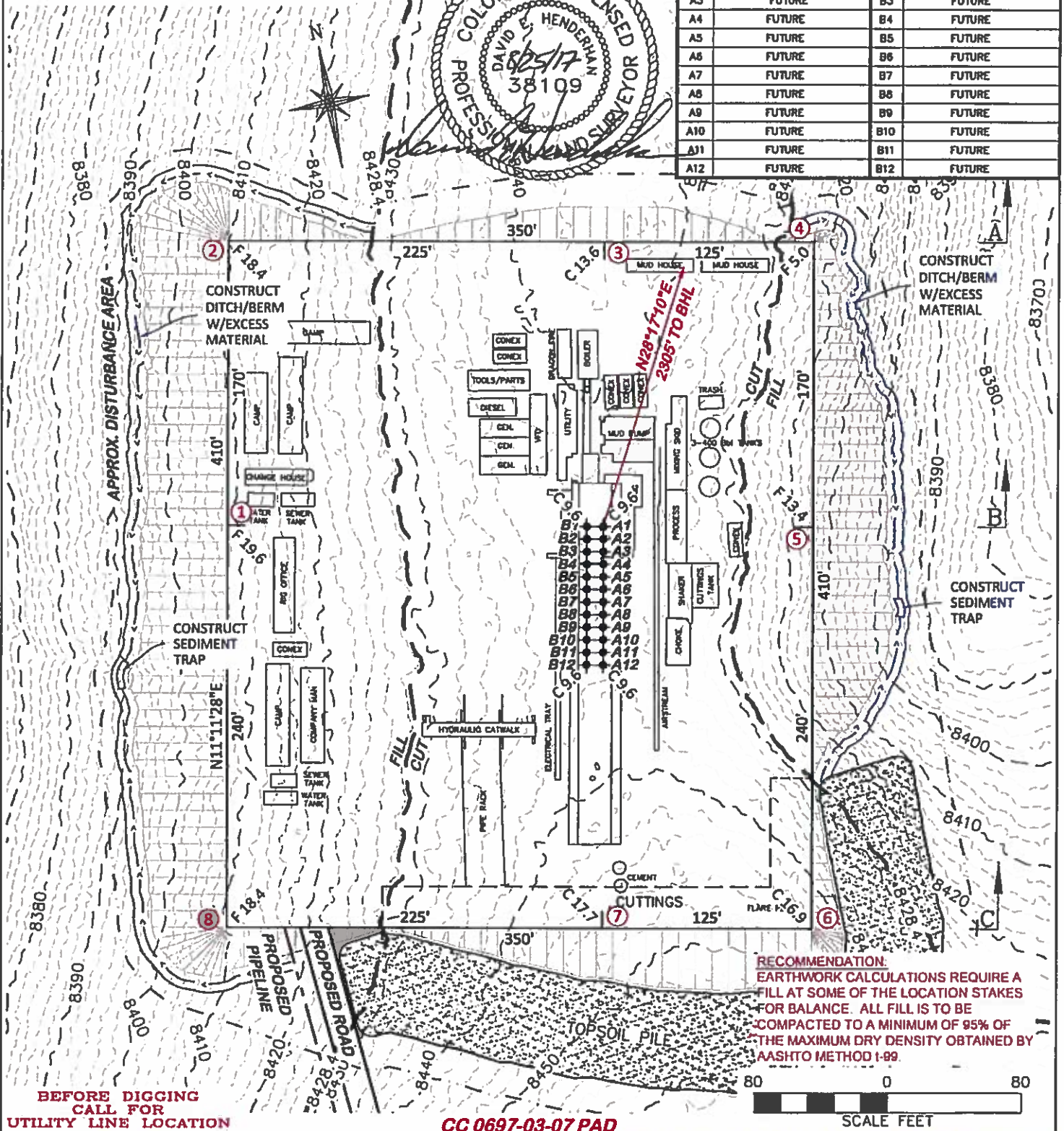
PROPOSED AREA OF DISTURBANCE: 6.0± ACRES
DRAINS TO WEST FORK PARACHUTE CREEK

RIG LAYOUT



CC 0697-03-07 PAD

SLOT	WELL	SLOT	WELL
A1	CC FEDERAL 0697-03-D1E	B1	FUTURE
A2	FUTURE	B2	FUTURE
A3	FUTURE	B3	FUTURE
A4	FUTURE	B4	FUTURE
A5	FUTURE	B5	FUTURE
A6	FUTURE	B6	FUTURE
A7	FUTURE	B7	FUTURE
A8	FUTURE	B8	FUTURE
A9	FUTURE	B9	FUTURE
A10	FUTURE	B10	FUTURE
A11	FUTURE	B11	FUTURE
A12	FUTURE	B12	FUTURE



CONSTRUCTION LAYOUT DRAWING 2 OF 5



DRIFIN & ASSOCIATES, INC.
1414 ELK ST., ROCK SPRINGS, WY 82901

DRAWN: 8/23/2017 - TCM

SCALE: 1" = 80'

REVISED: N/A -

DRG JOB No. 21295

2 RIG

RIG LAYOUT
LARAMIE ENERGY, LLC.
CC 0697-03-07

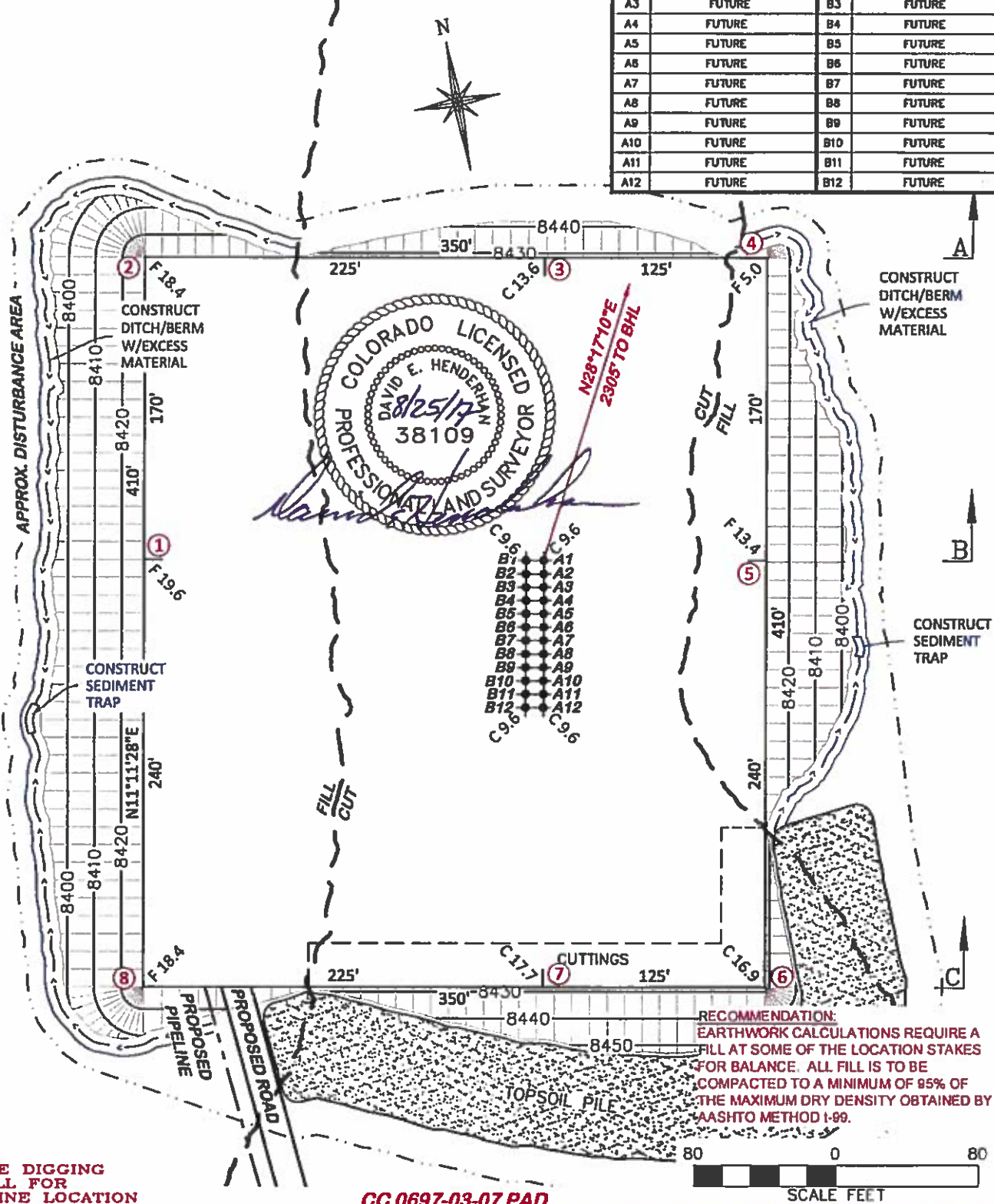
**LOT 11, SECTION 3, T. 6 S., R. 97 W., 6th P.M.,
GARFIELD COUNTY, COLORADO**

UNGRADED ELEVATION: 8438.0'
 FINAL ELEVATION: 8428.4'
 PROPOSED AREA OF DISTURBANCE: 6.0± ACRES
 DRAINS TO WEST FORK PARACHUTE CREEK

DESIGN CONTOURS

CC 0697-03-07 PAD

SLOT	WELL	SLOT	WELL
A1	CC FEDERAL 0697-03-D1E	B1	FUTURE
A2	FUTURE	B2	FUTURE
A3	FUTURE	B3	FUTURE
A4	FUTURE	B4	FUTURE
A5	FUTURE	B5	FUTURE
A6	FUTURE	B6	FUTURE
A7	FUTURE	B7	FUTURE
A8	FUTURE	B8	FUTURE
A9	FUTURE	B9	FUTURE
A10	FUTURE	B10	FUTURE
A11	FUTURE	B11	FUTURE
A12	FUTURE	B12	FUTURE



BEFORE DIGGING
CALL FOR
UTILITY LINE LOCATION

CC 0697-03-07 PAD

CONSTRUCTION LAYOUT DRAWING 3 OF 5

DRG RIFFIN & ASSOCIATES, INC.
 (307) 362-6028 1414 ELK ST., ROCK SPRINGS, WY 82901

DRAWN: 8/23/2017 - TCM

SCALE: 1" = 80'

REVISED: N/A -

DRG JOB No. 21295

3 DSGN CONT

DESIGN CONTOURS
LARAMIE ENERGY, LLC.
 CC 0697-03-07
 LOT 11, SECTION 3, T. 6 S., R. 97 W., 6th P.M.,
 GARFIELD COUNTY, COLORADO

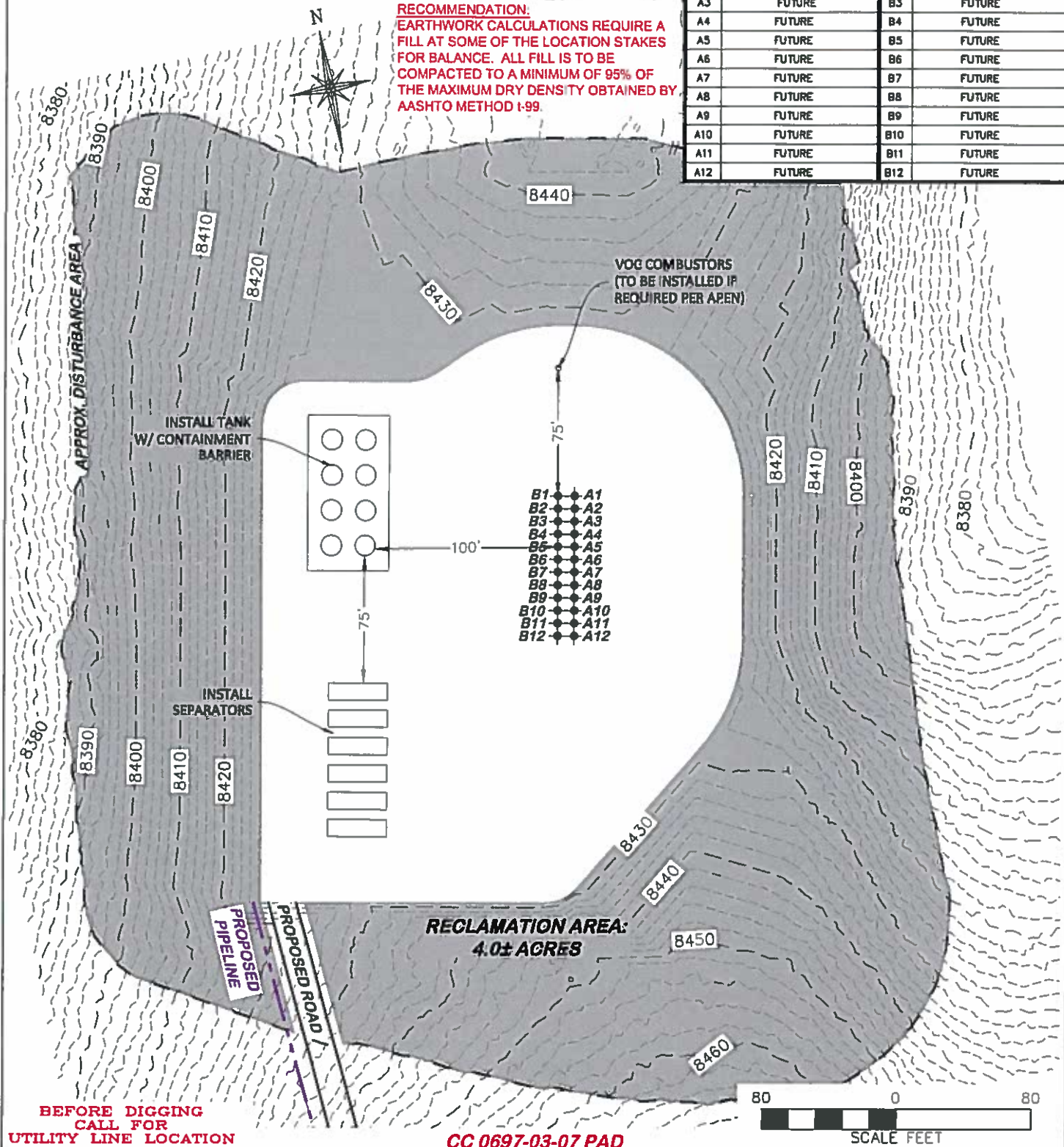
APPROXIMATE DISTURBANCE AREA 6.0± ACRES
 PROPOSED RECLAMATION AREA: 4.0± ACRES
 INTERIM RECLAMATION DISTURBANCE: 2.0± ACRES

PROPOSED RECLAMATION

CC 0697-03-07 PAD

SLOT	WELL	SLOT	WELL
A1	CC FEDERAL 0697-03-01E	B1	FUTURE
A2	FUTURE	B2	FUTURE
A3	FUTURE	B3	FUTURE
A4	FUTURE	B4	FUTURE
A5	FUTURE	B5	FUTURE
A6	FUTURE	B6	FUTURE
A7	FUTURE	B7	FUTURE
A8	FUTURE	B8	FUTURE
A9	FUTURE	B9	FUTURE
A10	FUTURE	B10	FUTURE
A11	FUTURE	B11	FUTURE
A12	FUTURE	B12	FUTURE

RECOMMENDATION:
 EARTHWORK CALCULATIONS REQUIRE A FILL AT SOME OF THE LOCATION STAKES FOR BALANCE. ALL FILL IS TO BE COMPACTED TO A MINIMUM OF 95% OF THE MAXIMUM DRY DENSITY OBTAINED BY AASHTO METHOD 1-99.



BEFORE DIGGING
 CALL FOR
 UTILITY LINE LOCATION

CC 0697-03-07 PAD

SCALE FEET



RIFFIN & ASSOCIATES, INC.

(307) 362-5028

1414 ELK ST., ROCK SPRINGS, WY 82901

DRAWN: 8/23/2017 - TCM

SCALE: 1" = 80'

REVISED: N/A -

DRG JOB No. 21295

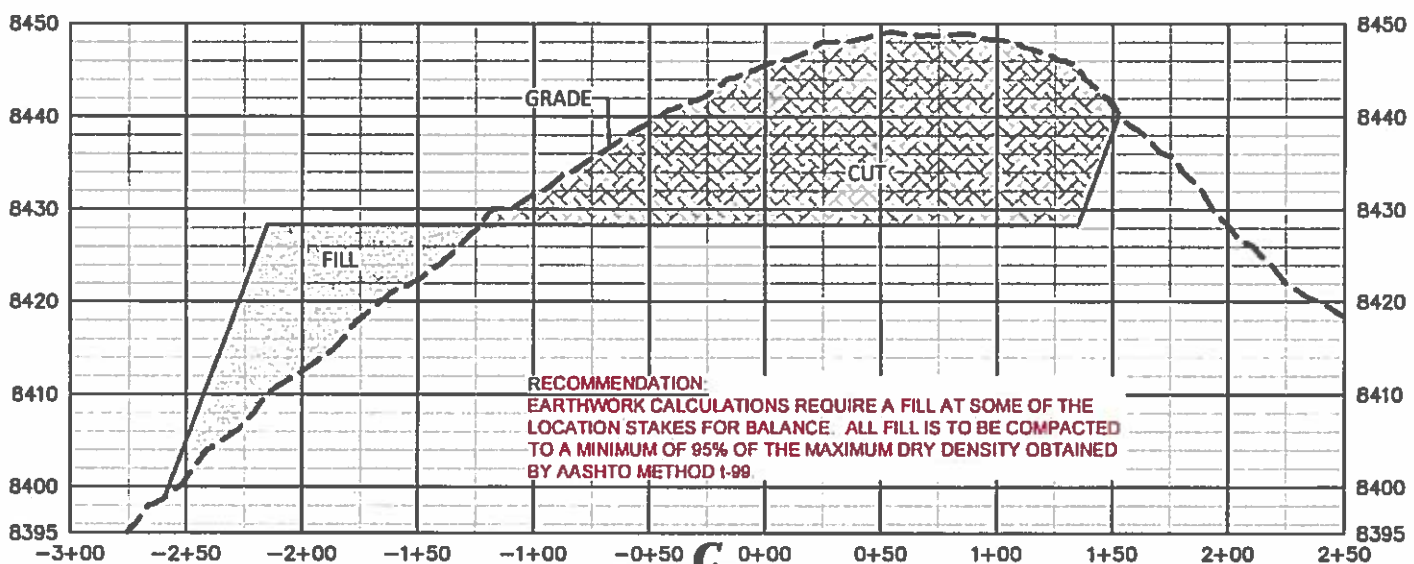
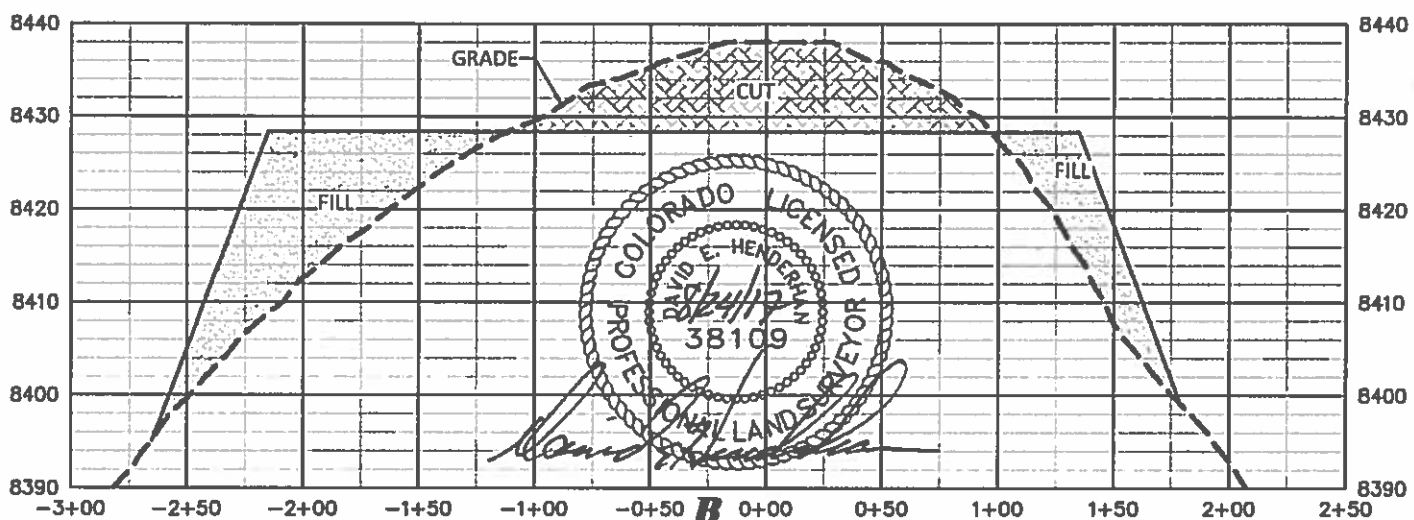
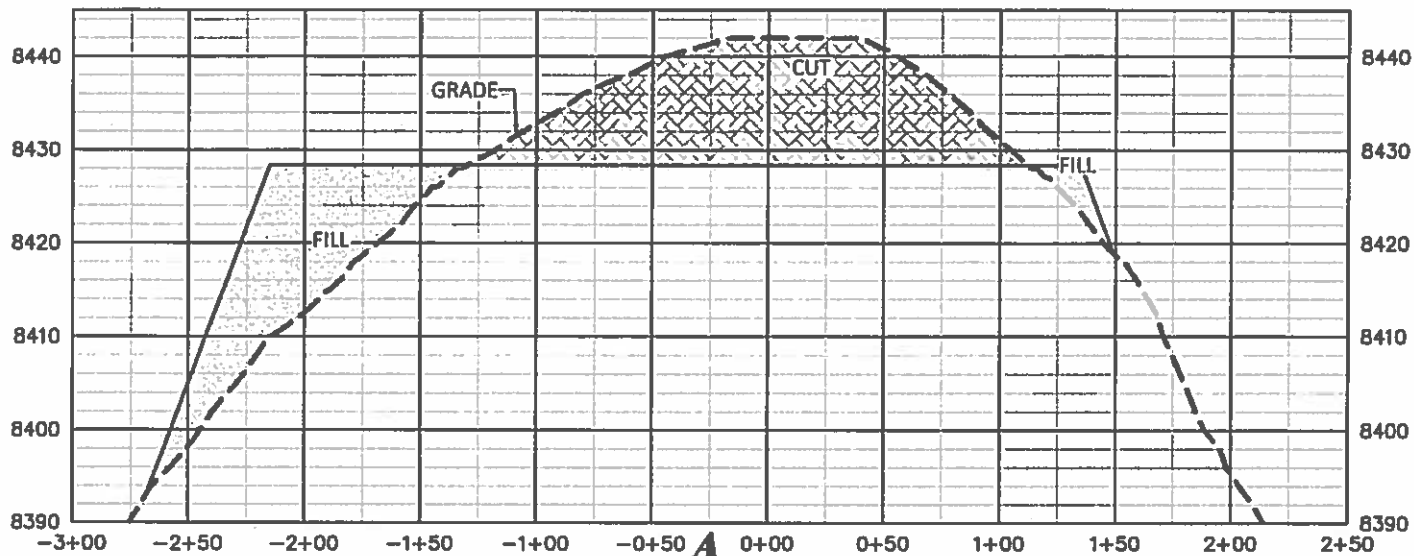
4 REC

CONSTRUCTION LAYOUT DRAWING 4 OF 5

**PROPOSED RECLAMATION
 LARAMIE ENERGY, LLC.**

CC 0697-03-07

**LOT 11, SECTION 3, T.6 S., R.97 W., 6th P.M.,
 GARFIELD COUNTY, COLORADO**



CC 0697-03-07 PAD

CONSTRUCTION LAYOUT DRAWING 5 OF 5



RIFFIN & ASSOCIATES, INC.
1414 ELK ST., ROCK SPRINGS, WY 82801

(307) 362-5028

DRAWN: 8/23/2017 - TCM

SCALE: H- 1"= 80' V- 1"= 20'

REVISED: N/A -

DRG JOB No. 21295

5 X SEC

LARAMIE ENERGY, LLC.

CC 0697-03-07

**LOT 11, SECTION 3, T. 6 S., R. 97 W., 6th P.M.,
GARFIELD COUNTY, COLORADO**