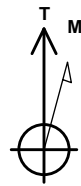


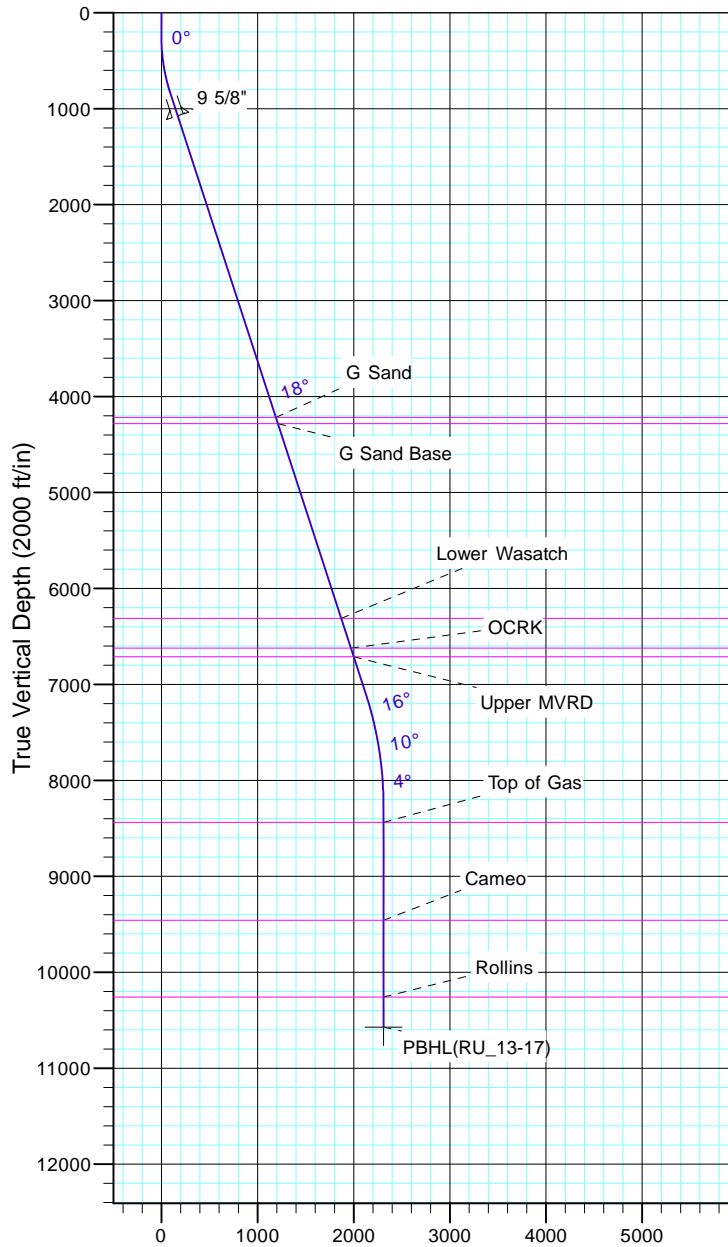
TEP Rocky Mountain LLC

Project: Garfield County, CO NAD83
Site: RU 23-17 Pad
Well: RU 13-17
Wellbore: OH
Design: Plan #1



Azimuths to True North
Magnetic North: 9.60°

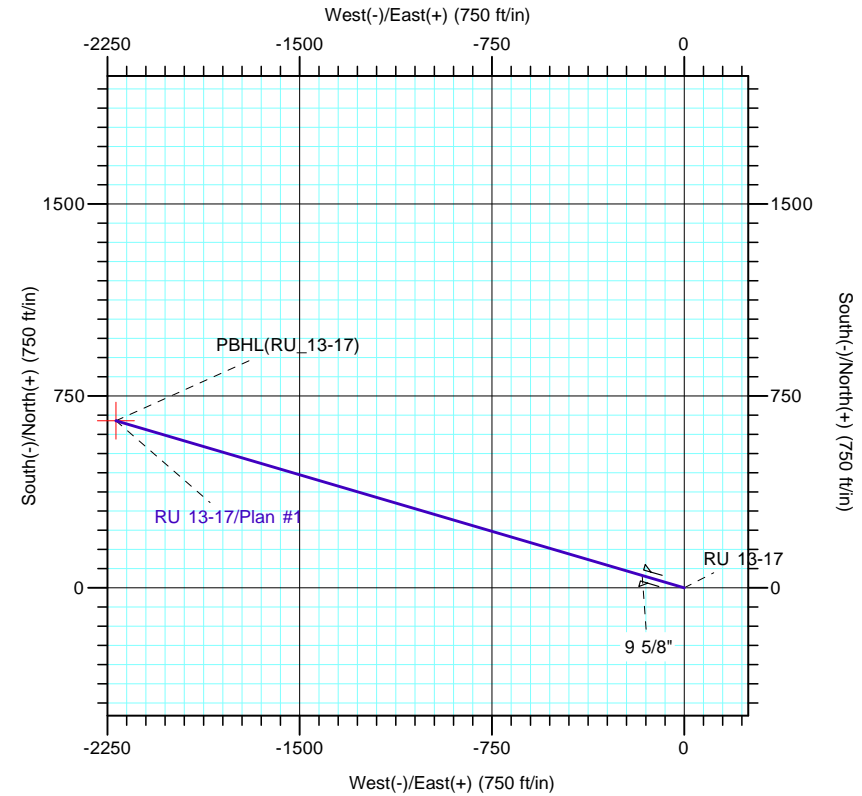
Magnetic Field
Strength: 51501.5nT
Dip Angle: 65.58°
Date: 7/5/2017
Model: IGRF2015



Vertical Section at 286.41° (2000 ft/in)

CASING DETAILS			
TVD	MD	Name	Size
1077.9	1100.0	9 5/8"	9.625

FORMATION TOP DETAILS		
TVDPath	MDPath	Formation
4218.0	4401.6	G Sand
4283.0	4470.0	G Sand Base
6313.0	6604.4	Lower Wasatch
6623.0	6930.4	OCRK
6713.0	7025.0	Upper MVRD
8438.0	8789.0	Top of Gas
9458.0	9809.0	Cameo
10258.0	10609.0	Rollins



Name	TVD	+N/-S	DESIGN TARGET DETAILS			Latitude	Longitude
			+E/-W	Northing	Easting		
PBHL(RU_13-17)	10573.0	652.8	-2216.4	1595343.00	2349033.60	39° 26' 43.077 N	107° 48' 19.279 W

SECTION DETAILS										
Sec	MD	Inc	Azi	TVD	+N/-S	+E/-W	Dleg	TFace	Vsect	Target
1	0.0	0.00	0.00	0.0	0.0	0.0	0.00	0.00	0.0	
2	250.0	0.00	0.00	250.0	0.0	0.0	0.00	0.00	0.0	
3	850.0	18.00	286.41	840.1	26.4	-89.7	3.00	286.41	93.5	
4	7420.1	18.00	286.41	7088.7	600.0	-2037.1	0.00	0.00	2123.6	
5	8620.0	0.00	0.00	8269.0	652.8	-2216.4	1.50	180.00	2310.5	
6	10924.0	0.00	0.00	10573.0	652.8	-2216.4	0.00	0.00	2310.5	PBHL(RU_13-17)