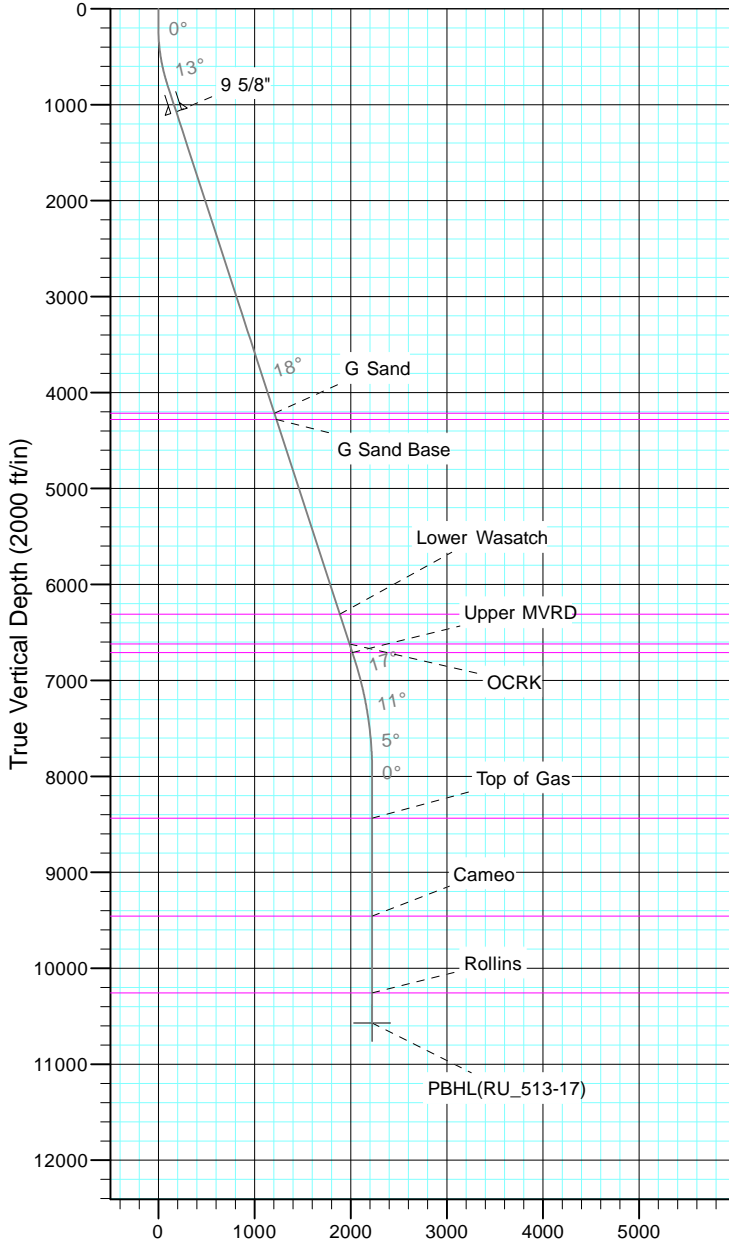


TEP Rocky Mountain LLC  
Project: Garfield County, CO NAD83  
Site: RU 23-17 Pad  
Well: RU 513-17  
Wellbore: OH  
Design: Plan #1



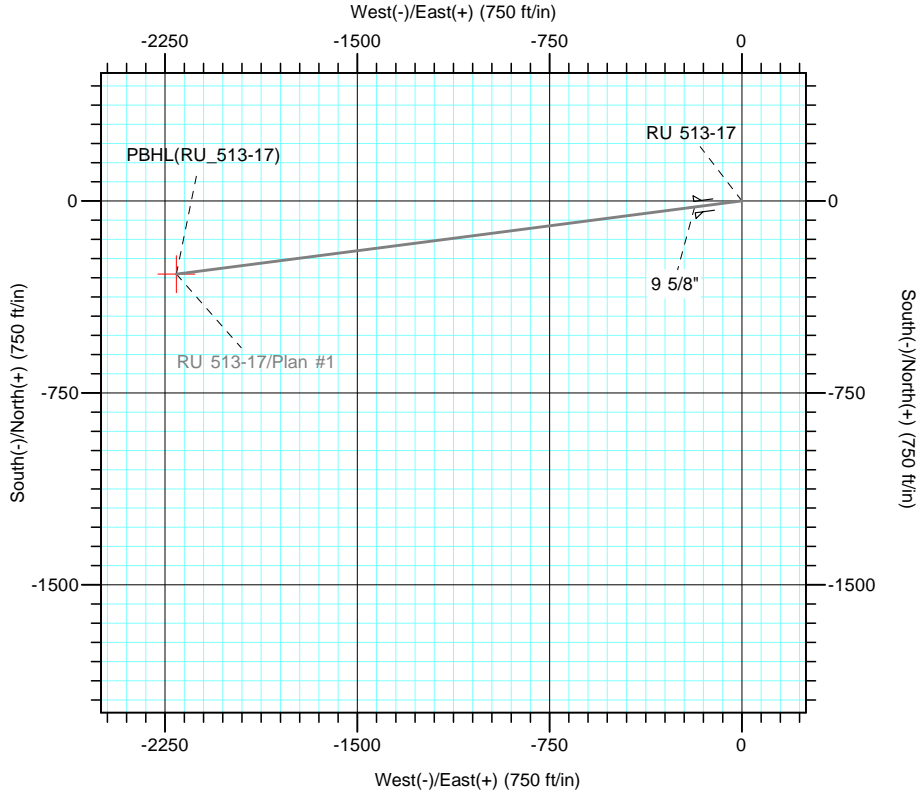
Azimuths to True North  
Magnetic North: 9.60°  
  
Magnetic Field  
Strength: 51501.5nT  
Dip Angle: 65.58°  
Date: 7/5/2017  
Model: IGRF2015



Vertical Section at 262.62° (2000 ft/in)

CASING DETAILS			
TVD	MD	Name	Size
1075.5	1100.0	9 5/8"	9.625

FORMATION TOP DETAILS		
TVDPath	MDPath	Formation
4216.0	4402.2	G Sand
4281.0	4470.5	G Sand Base
6311.0	6605.0	Lower Wasatch
6621.0	6931.0	OCRK
6711.0	7025.6	Upper MVRD
8436.0	8773.3	Top of Gas
9456.0	9793.3	Cameo
10256.0	10593.3	Rollins



DESIGN TARGET DETAILS						
Name	TVD	+N/-S	+E/-W	Northing	Easting	Latitude
PBHL(RU_513-17)	10571.0	-285.8	-2205.5	1594375.10	2349044.00	39° 26' 33.516 N

SECTION DETAILS										
Sec	MD	Inc	Azi	TVD	+N/-S	+E/-W	Dleg	TFace	VSect	Target
1	0.0	0.00	0.00	0.0	0.0	0.0	0.00	0.00	0.0	
2	200.0	0.00	0.00	200.0	0.0	0.0	0.00	0.00	0.0	
3	800.1	18.00	262.62	790.3	-12.0	-92.7	3.00	262.62	93.5	
4	7088.1	18.00	262.62	6770.5	-261.7	-2020.0	0.00	0.00	2036.9	
5	8288.3	0.00	0.00	7951.0	-285.8	-2205.5	1.50	180.00	2223.9	
6	10908.3	0.00	0.00	10571.0	-285.8	-2205.5	0.00	0.00	2223.9	PBHL(RU_513-17)