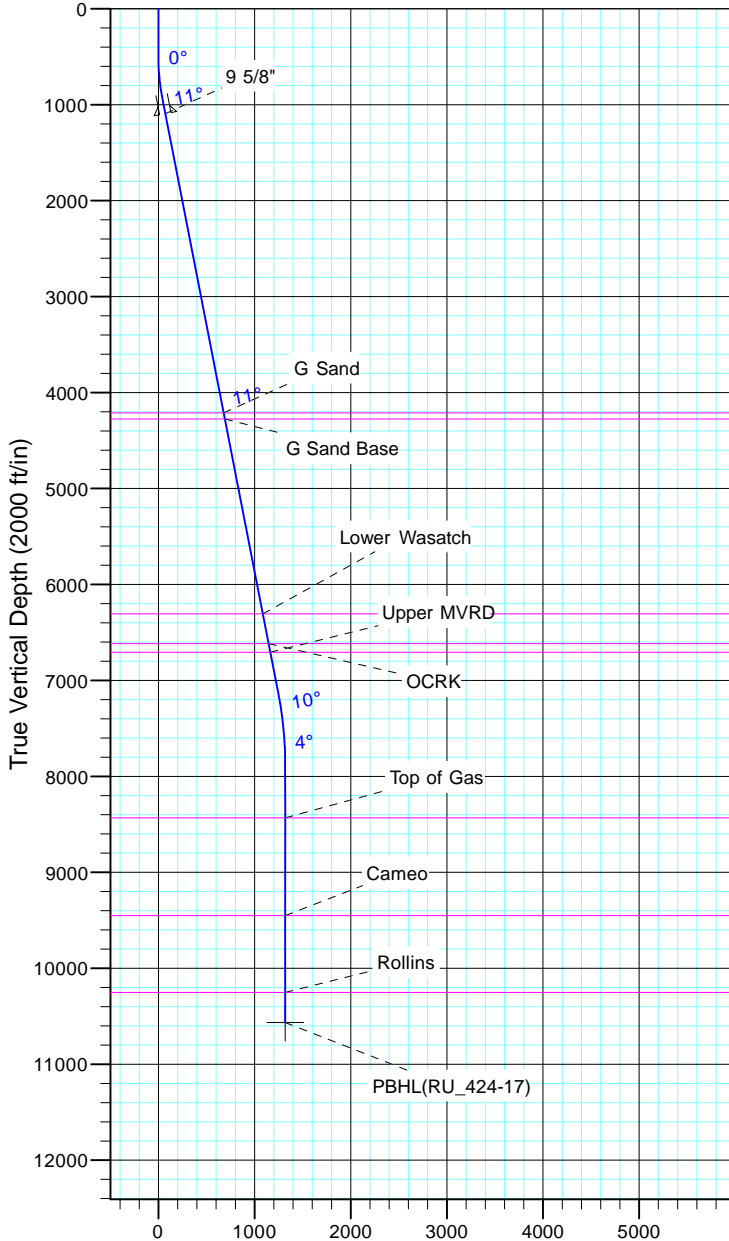


TEP Rocky Mountain LLC
Project: Garfield County, CO NAD83
Site: RU 23-17 Pad
Well: RU 424-17
Wellbore: OH
Design: Plan #1



Azimuths to True North
Magnetic North: 11.35°

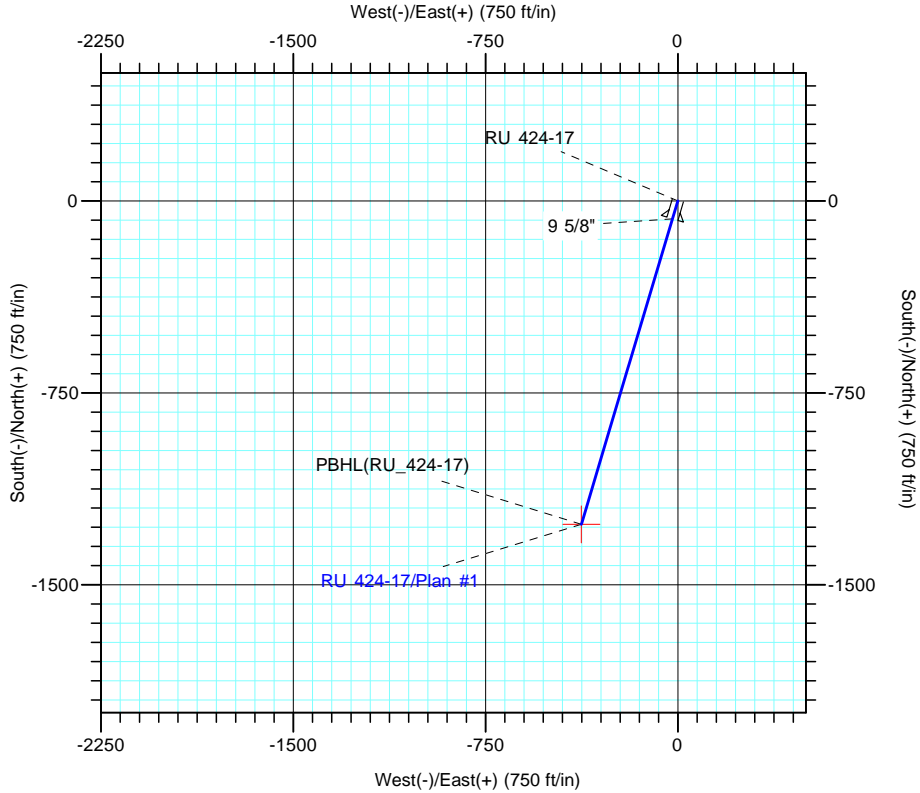
Magnetic Field
Strength: 53028.0snT
Dip Angle: 65.98°
Date: 12/31/2004
Model: IGRF2000



Vertical Section at 196.58° (2000 ft/in)

CASING DETAILS			
TVD	MD	Name	Size
1094.4	1100.0	9 5/8"	9.625

FORMATION TOP DETAILS		
TVDPATH	MDPATH	FORMATION
4212.0	4276.0	G Sand
4277.0	4342.3	G Sand Base
6307.0	6410.3	Lower Wasatch
6617.0	6726.1	OCRK
6707.0	6817.8	Upper MVRD
8432.0	8555.4	Top of Gas
9452.0	9575.4	Cameo
10252.0	10375.4	Rollins



DESIGN TARGET DETAILS						
Name	TVD	+N/-S	+E/-W	Northing	Easting	Latitude
PBHL(RU_424-17)	10567.0	-1263.7	-376.3	1593333.80	2350874.30	39° 26' 23.686 N

SECTION DETAILS										
Sec	MD	Inc	Azi	TVD	+N/-S	+E/-W	Dleg	TFace	Vsect	Target
1	0.0	0.00	0.00	0.0	0.0	0.0	0.00	0.00	0.0	
2	500.0	0.00	0.00	500.0	0.0	0.0	0.00	0.00	0.0	
3	940.2	11.00	196.58	937.5	-40.4	-12.0	2.50	196.58	42.1	
4	7258.7	11.00	196.58	7139.8	-1196.4	-356.2	0.00	0.00	1248.3	
5	7992.4	0.00	0.00	7869.0	-1263.7	-376.3	1.50	180.00	1318.5	
6	10690.4	0.00	0.00	10567.0	-1263.7	-376.3	0.00	0.00	1318.5	PBHL(RU_424-17)