

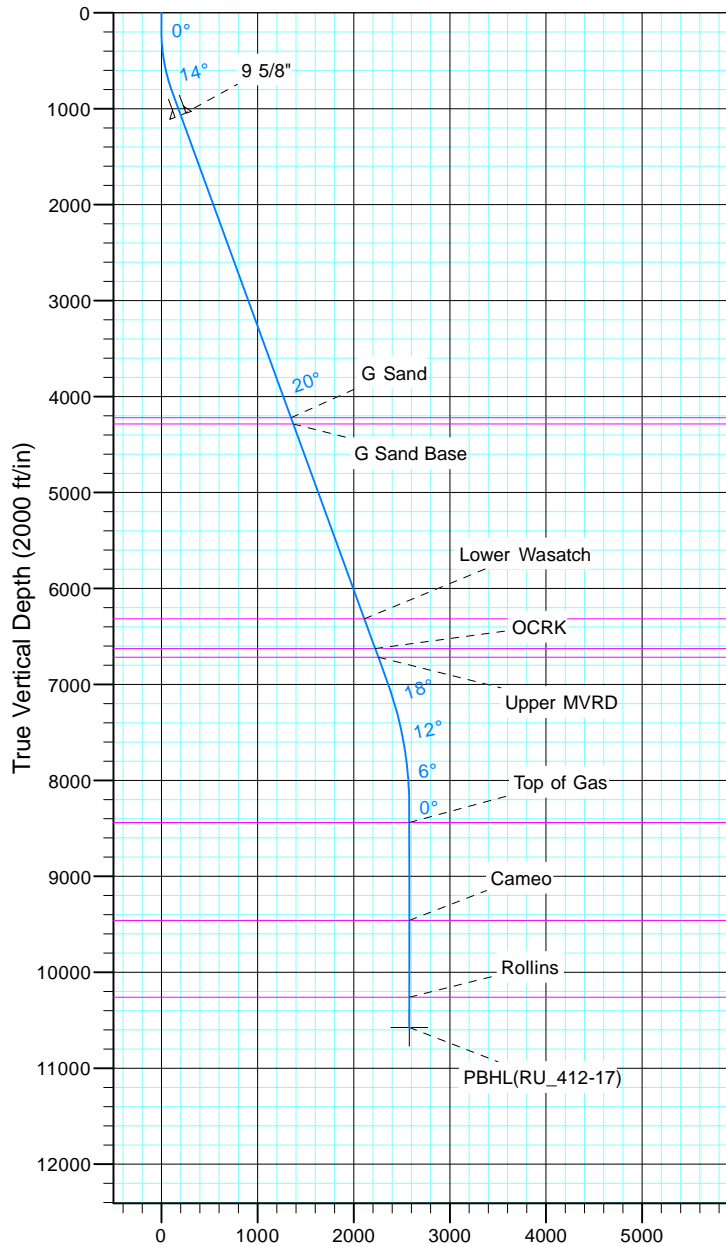
# TEP Rocky Mountain LLC

Project: Garfield County, CO NAD83  
Site: RU 23-17 Pad  
Well: RU 412-17  
Wellbore: OH  
Design: Plan #1



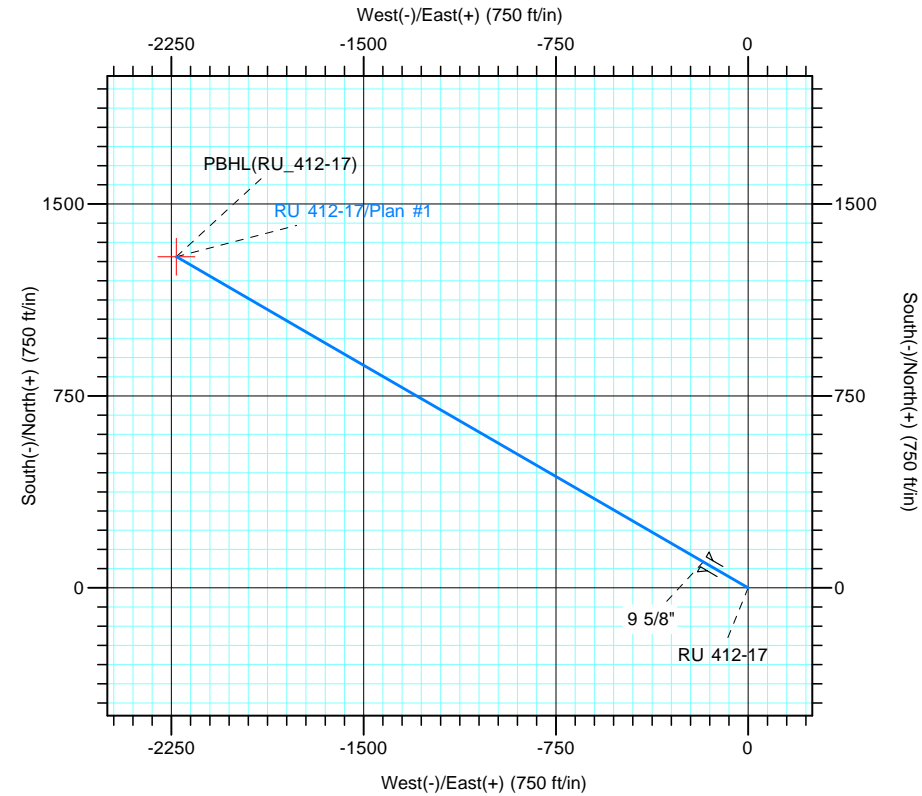
Azimuths to True North  
Magnetic North: 9.60°

Magnetic Field  
Strength: 51501.5nT  
Dip Angle: 65.58°  
Date: 7/5/2017  
Model: IGRF2015



CASING DETAILS			
TVD	MD	Name	Size
1071.3	1100.0	9 5/8"	9.625

FORMATION TOP DETAILS		
TVDPath	MDPath	Formation
4221.0	4451.9	G Sand
4286.0	4521.0	G Sand Base
6316.0	6681.3	Lower Wasatch
6626.0	7011.2	OCRK
6716.0	7107.0	Upper MVRD
8441.0	8875.0	Top of Gas
9461.0	9895.0	Cameo
10261.0	10695.0	Rollins



DESIGN TARGET DETAILS						
Name	TVD	+N/-S	+E/-W	Northing	Easting	Latitude
PBHL(RU_412-17)	10576.0	1293.3	-2230.3	1595995.50	2349026.60	39° 26' 49.522 N
		107° 48' 19.579 W				

SECTION DETAILS										
Sec	MD	Inc	Azi	TVD	+N/-S	+E/-W	Dleg	TFace	Vsect	Target
1	0.0	0.00	0.00	0.0	0.0	0.0	0.00	0.00	0.0	
2	180.0	0.00	0.00	180.0	0.0	0.0	0.00	0.00	0.0	
3	846.6	20.00	300.11	833.2	57.8	-99.6	3.00	300.11	115.2	
4	7374.7	20.00	300.11	6967.6	1177.8	-2031.1	0.00	0.00	2347.8	
5	8708.0	0.00	0.00	8274.0	1293.3	-2230.3	1.50	180.00	2578.2	
6	11010.0	0.00	0.00	10576.0	1293.3	-2230.3	0.00	0.00	2578.2	PBHL(RU_412-17)