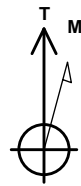


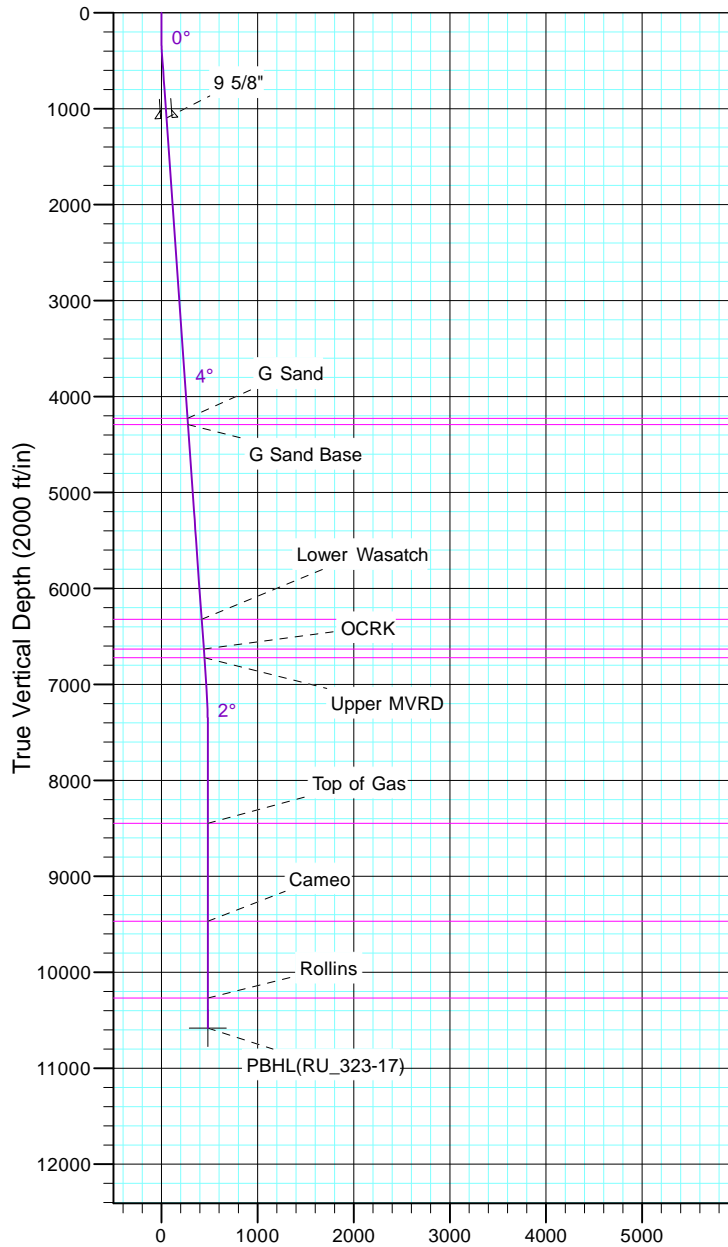
# TEP Rocky Mountain LLC

Project: Garfield County, CO NAD83  
Site: RU 23-17 Pad  
Well: RU 323-17  
Wellbore: OH  
Design: Plan #1



Azimuths to True North  
Magnetic North: 9.60°

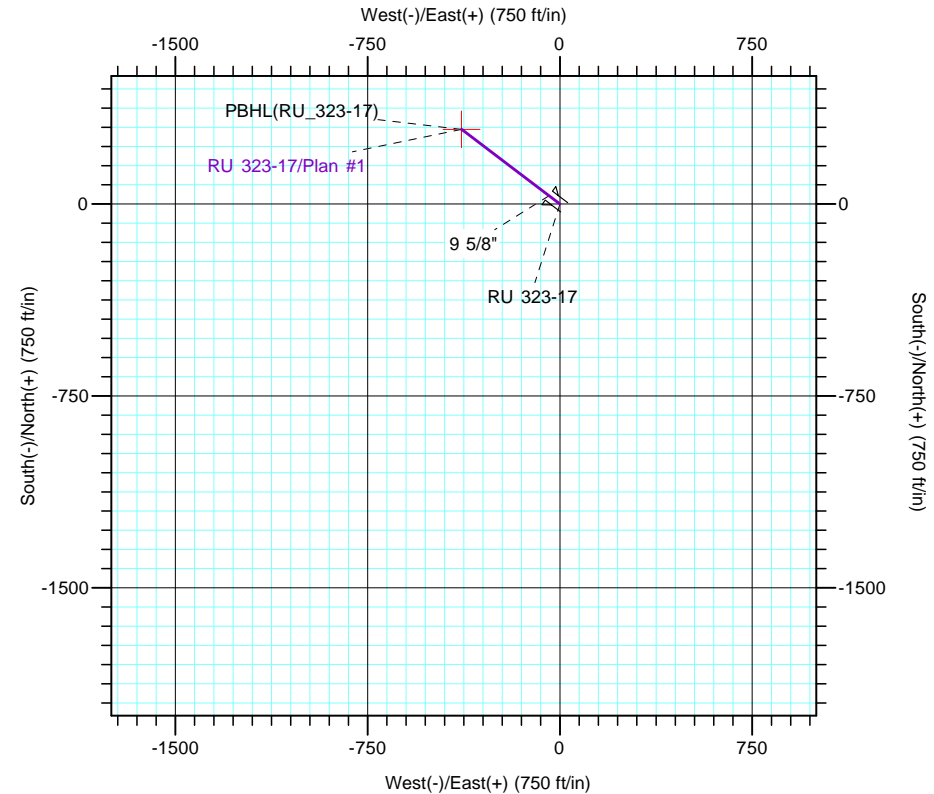
Magnetic Field  
Strength: 51501.5nT  
Dip Angle: 65.58°  
Date: 7/5/2017  
Model: IGRF2015



Vertical Section at 307.27° (2000 ft/in)

CASING DETAILS			
TVD	MD	Name	Size
1098.2	1100.0	9 5/8"	9.625

FORMATION TOP DETAILS		
TVDPATH	MDPATH	FORMATION
4228.0	4237.4	G Sand
4293.0	4302.6	G Sand Base
6323.0	6337.5	Lower Wasatch
6633.0	6648.3	OCRK
6723.0	6738.5	Upper MVRD
8448.0	8464.6	Top of Gas
9468.0	9484.6	Cameo
10268.0	10284.6	Rollins



Name	TVD	+N/-S	DESIGN TARGET DETAILS			Easting	Latitude	Longitude
			+E/-W	Northing				
PBHL(RU_323-17)	10583.0	291.9	-383.6	1594948.00		2350859.90	39° 26' 39.631 N	107° 47' 55.878 W

SECTION DETAILS										
Sec	MD	Inc	Azi	TVD	+N/-S	+E/-W	Dleg	TFace	Vsect	Target
1	0.0	0.00	0.00	0.0	0.0	0.0	0.00	0.00	0.0	
2	250.0	0.00	0.00	250.0	0.0	0.0	0.00	0.00	0.0	
3	409.9	4.00	307.27	409.7	3.4	-4.4	2.50	307.27	5.6	
4	7113.2	4.00	307.27	7096.8	286.3	-376.2	0.00	0.00	472.7	
5	7379.6	0.00	0.00	7363.0	291.9	-383.6	1.50	180.00	482.0	
6	10599.6	0.00	0.00	10583.0	291.9	-383.6	0.00	0.00	482.0	PBHL(RU_323-17)