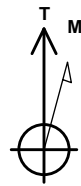


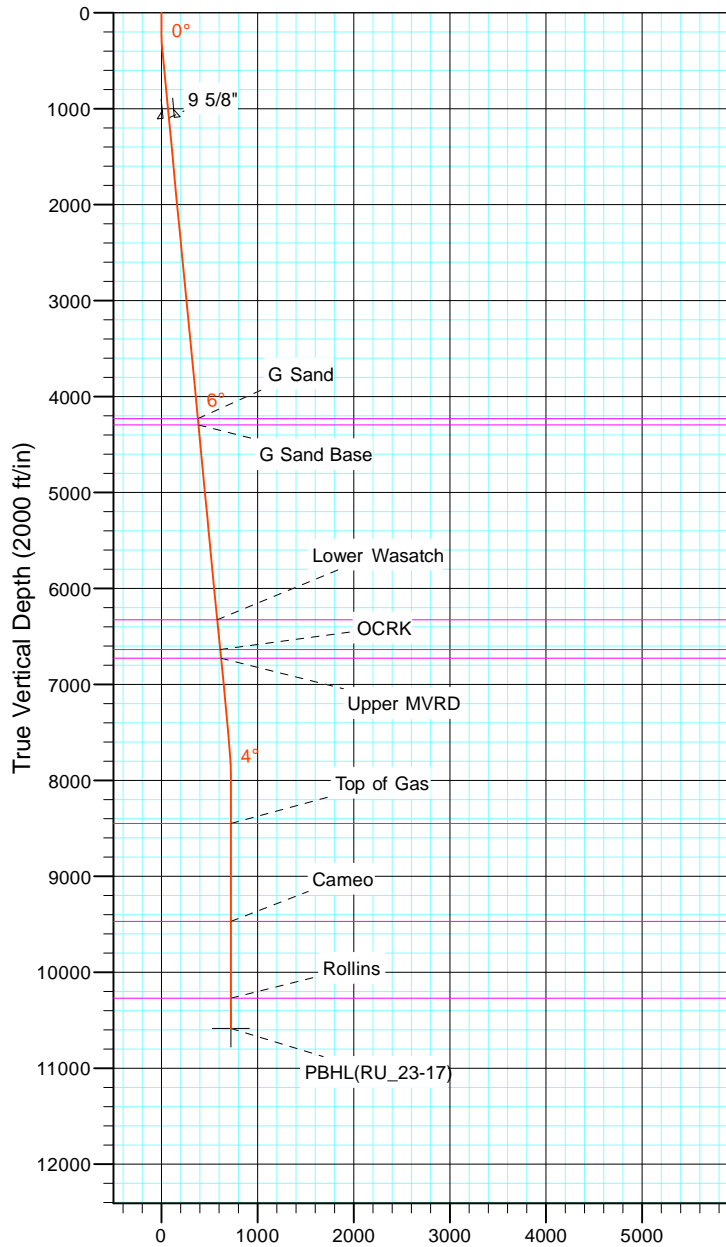
# TEP Rocky Mountain LLC

Project: Garfield County, CO NAD83  
Site: RU 23-17 Pad  
Well: RU 23-17  
Wellbore: OH  
Design: Plan #1



Azimuths to True North  
Magnetic North: 9.60°

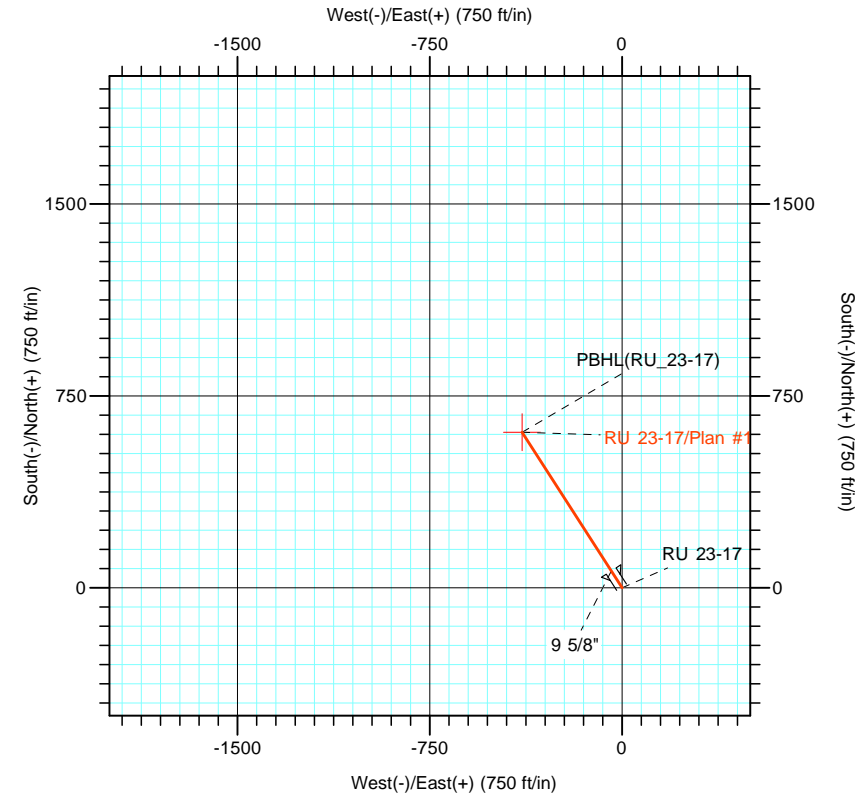
Magnetic Field  
Strength: 51501.5nT  
Dip Angle: 65.58°  
Date: 7/5/2017  
Model: IGRF2015



Vertical Section at 327.34° (2000 ft/in)

CASING DETAILS			
TVD	MD	Name	Size
1096.4	1100.0	9 5/8"	9.625

FORMATION TOP DETAILS			
TVDPath	MDPath	Formation	
4231.0	4249.1	G Sand	
4296.0	4314.4	G Sand Base	
6326.0	6353.8	Lower Wasatch	
6636.0	6665.2	OCRK	
6726.0	6755.6	Upper MVRD	
8451.0	8485.3	Top of Gas	
9471.0	9505.3	Cameo	
10271.0	10305.3	Rollins	



Name	TVD	+N/-S	DESIGN TARGET DETAILS			Latitude	Longitude
			+E/-W	Northing	Easting		
PBHL(RU_23-17)	10586.0	608.2	-389.9	1595270.30	2350857.00	39° 26' 42.815 N	107° 47' 56.019 W

SECTION DETAILS										
Sec	MD	Inc	Azi	TVD	+N/-S	+E/-W	Dleg	TFace	Vsect	Target
1	0.0	0.00	0.00	0.0	0.0	0.0	0.00	0.00	0.0	
2	180.0	0.00	0.00	180.0	0.0	0.0	0.00	0.00	0.0	
3	400.0	5.50	327.34	399.7	8.9	-5.7	2.50	327.34	10.6	
4	7643.5	5.50	327.34	7609.9	593.4	-380.4	0.00	0.00	704.9	
5	8010.3	0.00	0.00	7976.0	608.2	-389.9	1.50	180.00	722.5	
6	10620.3	0.00	0.00	10586.0	608.2	-389.9	0.00	0.00	722.5	PBHL(RU_23-17)