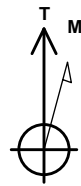


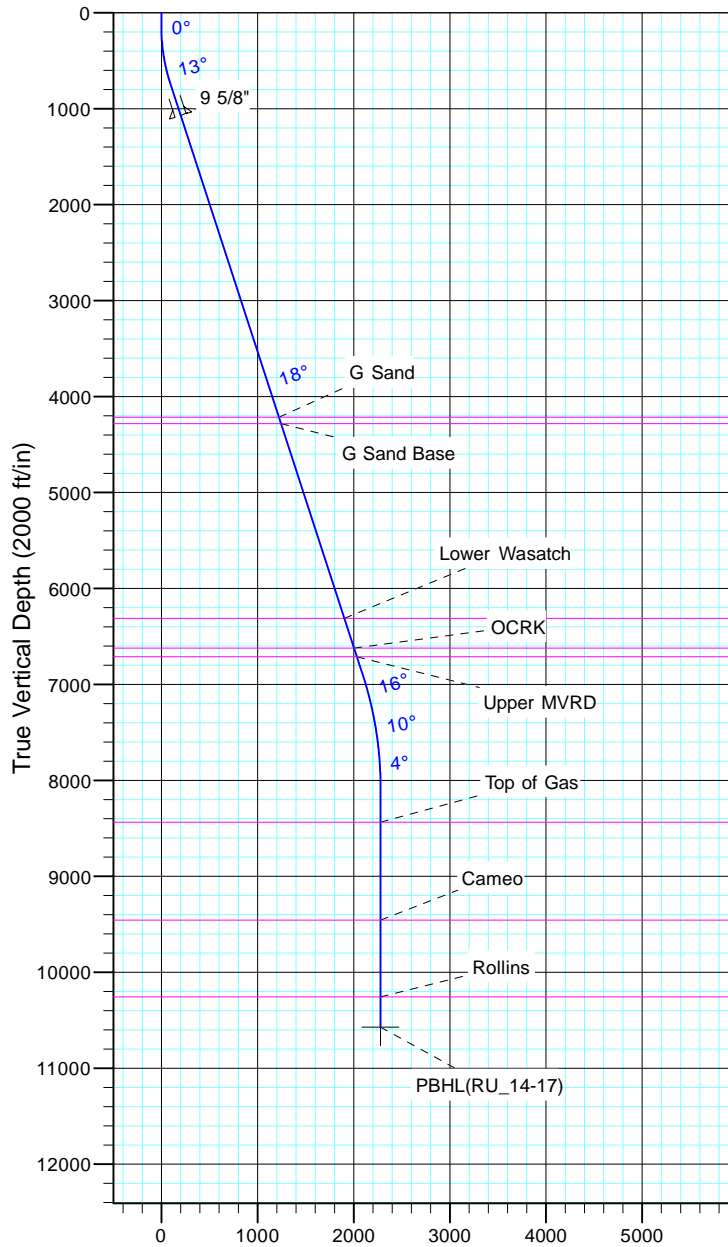
TEP Rocky Mountain LLC

Project: Garfield County, CO NAD83
Site: RU 23-17 Pad
Well: RU 14-17
Wellbore: OH
Design: Plan #1



Azimuths to True North
Magnetic North: 9.60°

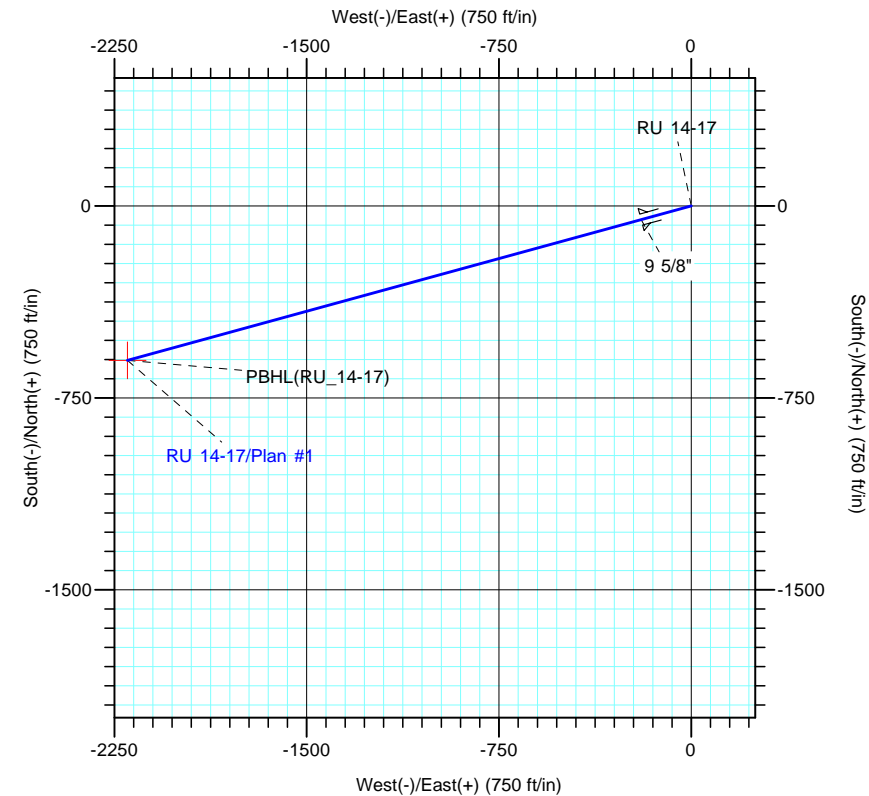
Magnetic Field
Strength: 51501.5nT
Dip Angle: 65.58°
Date: 7/5/2017
Model: IGRF2015



Vertical Section at 254.66° (2000 ft/in)

CASING DETAILS			
TVD	MD	Name	Size
1073.0	1100.0	9 5/8"	9.625

FORMATION TOP DETAILS		
TVDPath	MDPath	Formation
4217.0	4405.7	G Sand
4282.0	4474.1	G Sand Base
6312.0	6608.5	Lower Wasatch
6622.0	6934.5	OCRK
6712.0	7029.1	Upper MVRD
8437.0	8783.1	Top of Gas
9457.0	9803.1	Cameo
10257.0	10603.1	Rollins



Name		TVD	DESIGN TARGET DETAILS					Latitude		Longitude	
PBHL(RU_14-17)		10572.0	+N/-S	+E/-W	Northing	Easting		39° 26' 30.323 N		107° 48' 18.684 W	
			-603.0	-2198.6	1594051.90	2349047.50					

SECTION DETAILS										
Sec	MD	Inc	Azi	TVD	+N/-S	+E/-W	Dleg	TFace	VSec	Target
1	0.0	0.00	0.00	0.0	0.0	0.0	0.00	0.00	0.0	
2	150.0	0.00	0.00	150.0	0.0	0.0	0.00	0.00	0.0	
3	750.0	18.00	254.66	740.2	-24.7	-90.1	3.00	254.66	93.5	
4	7220.1	18.00	254.66	6893.7	-553.5	-2018.3	0.00	0.00	2092.8	
5	8420.1	0.00	0.00	8074.0	-603.0	-2198.6	1.50	180.00	2279.7	
6	10918.1	0.00	0.00	10572.0	-603.0	-2198.6	0.00	0.00	2279.7	PBHL(RU_14-17)