

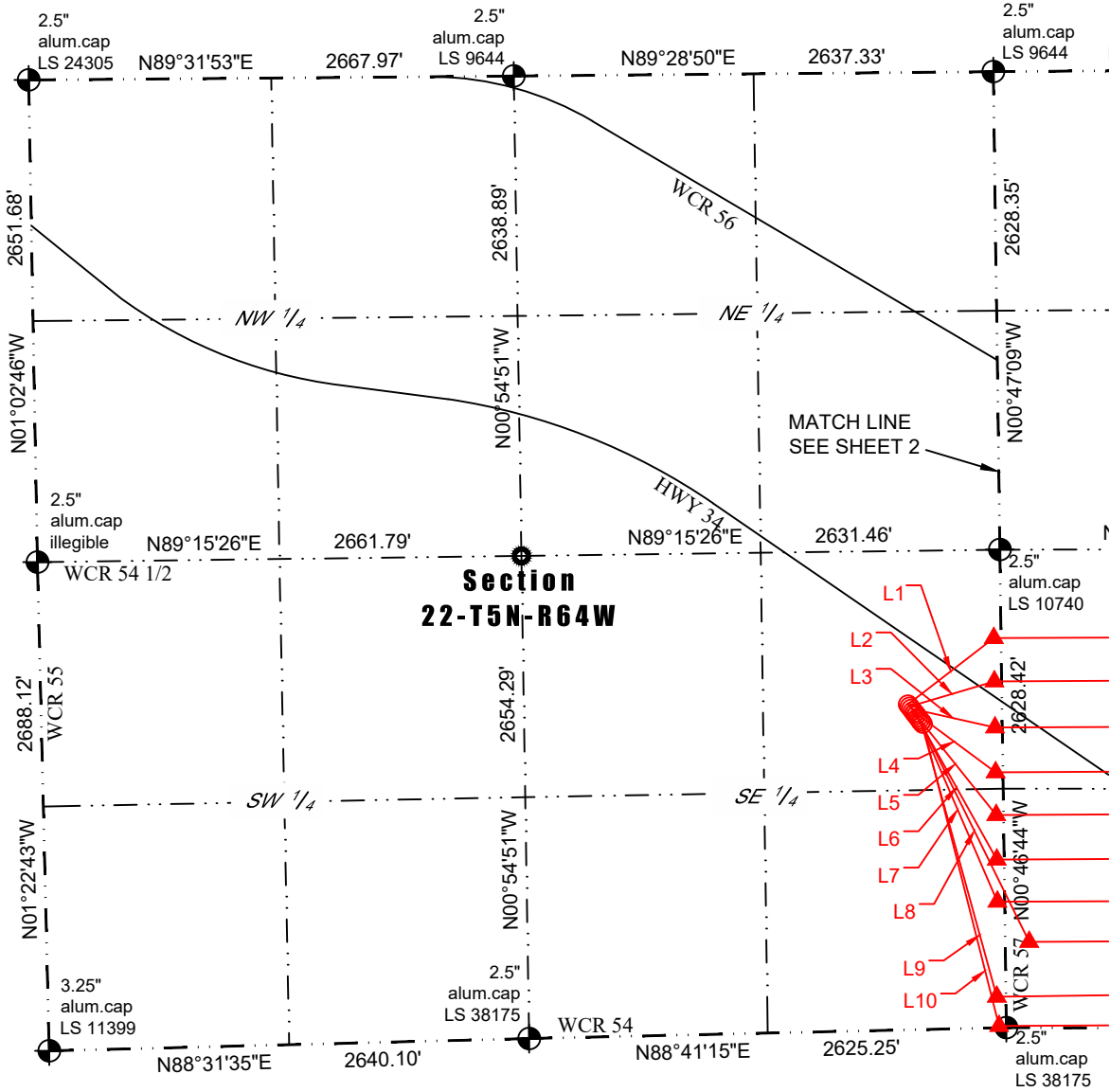


Washburn Land Surveying
www.WashburnSurveying.com
970-232-9645

MULTI-WELL PLAN

WAYNE 5N64W22X

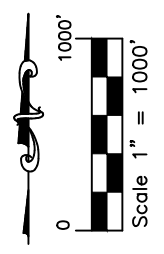
SECTION: 22
TOWNSHIP: 5N
RANGE: 64W
6TH P.M.
WELD COUNTY, CO



Section
22-T5N-R64W

| Line Table | | |
|------------|--------|-------------|
| Line # | Length | Direction |
| L1 | 598 | N52°19'54"E |
| L2 | 487 | N73°27'19"E |
| L3 | 472 | S77°21'09"E |
| L4 | 567 | S53°27'04"E |
| L5 | 718 | S38°43'14"E |
| L6 | 909 | S29°12'29"E |
| L7 | 1104 | S23°21'28"E |
| L8 | 1363 | S26°17'04"E |
| L9 | 1568 | S15°24'32"E |
| L10 | 1713 | S14°11'13"E |

- LEGEND:**
- ALIQUOT CORNER AS DESCRIBED
 - CALCULATED POSITION
 - SURFACE HOLE LOCATION (SHL)
 - ENTRY POINT (EP)
 - BOTTOM HOLE LOCATION (BHL)



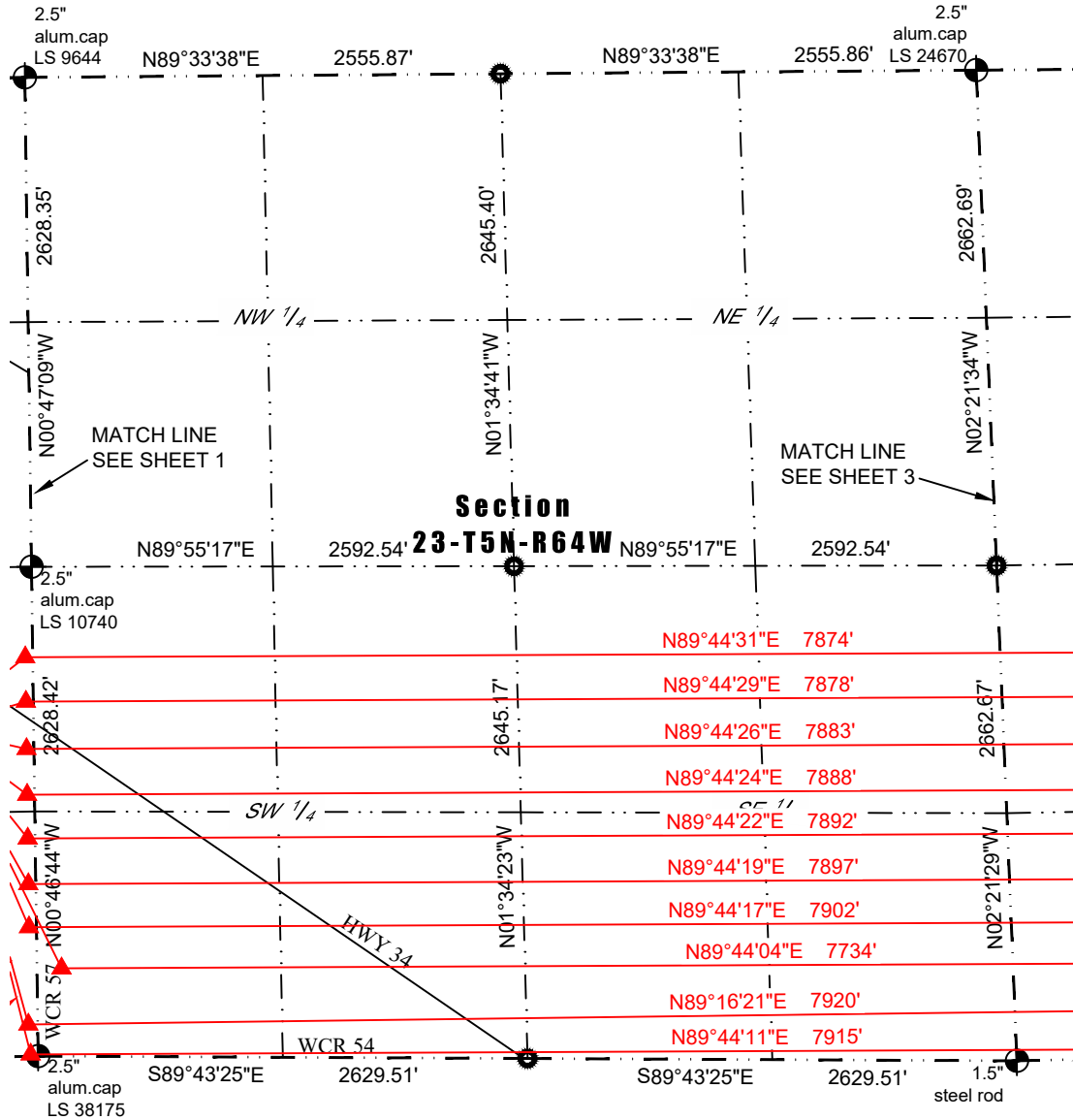


Washburn Land Surveying
www.WashburnSurveying.com
970-232-9645

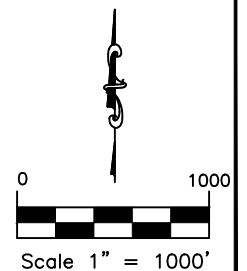
MULTI-WELL PLAN

WAYNE 5N64W22X

SECTION: 22
TOWNSHIP: 5N
RANGE: 64W
6TH P.M.
WELD COUNTY, CO



- LEGEND:**
- ALIQUOT CORNER AS DESCRIBED
 - CALCULATED POSITION
 - SURFACE HOLE LOCATION (SHL)
 - ENTRY POINT (EP)
 - BOTTOM HOLE LOCATION (BHL)



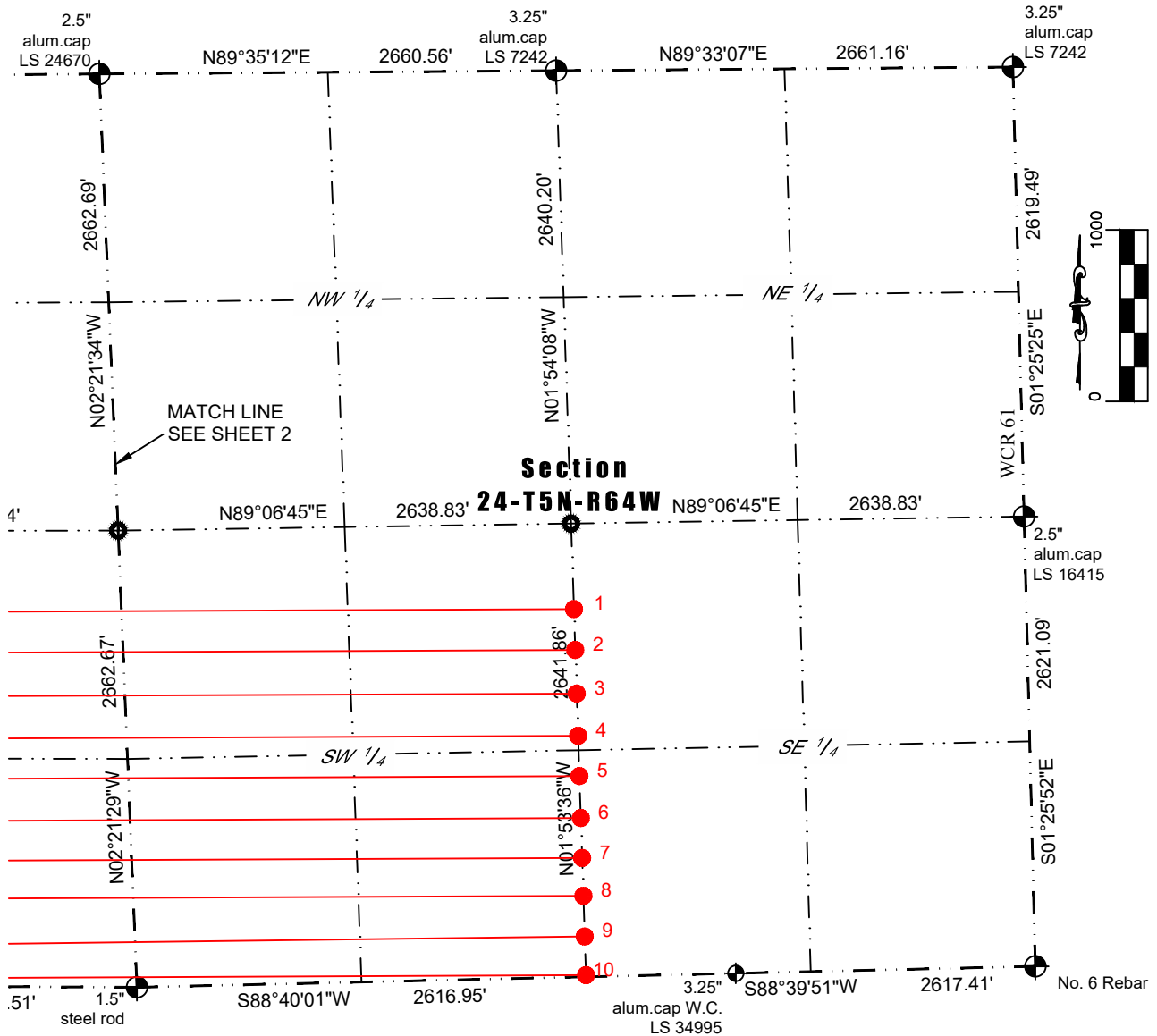


Washburn Land Surveying
www.WashburnSurveying.com
970-232-9645

MULTI-WELL PLAN

WAYNE 5N64W22X

SECTION: 22
TOWNSHIP: 5N
RANGE: 64W
6TH P.M.
WELD COUNTY, CO

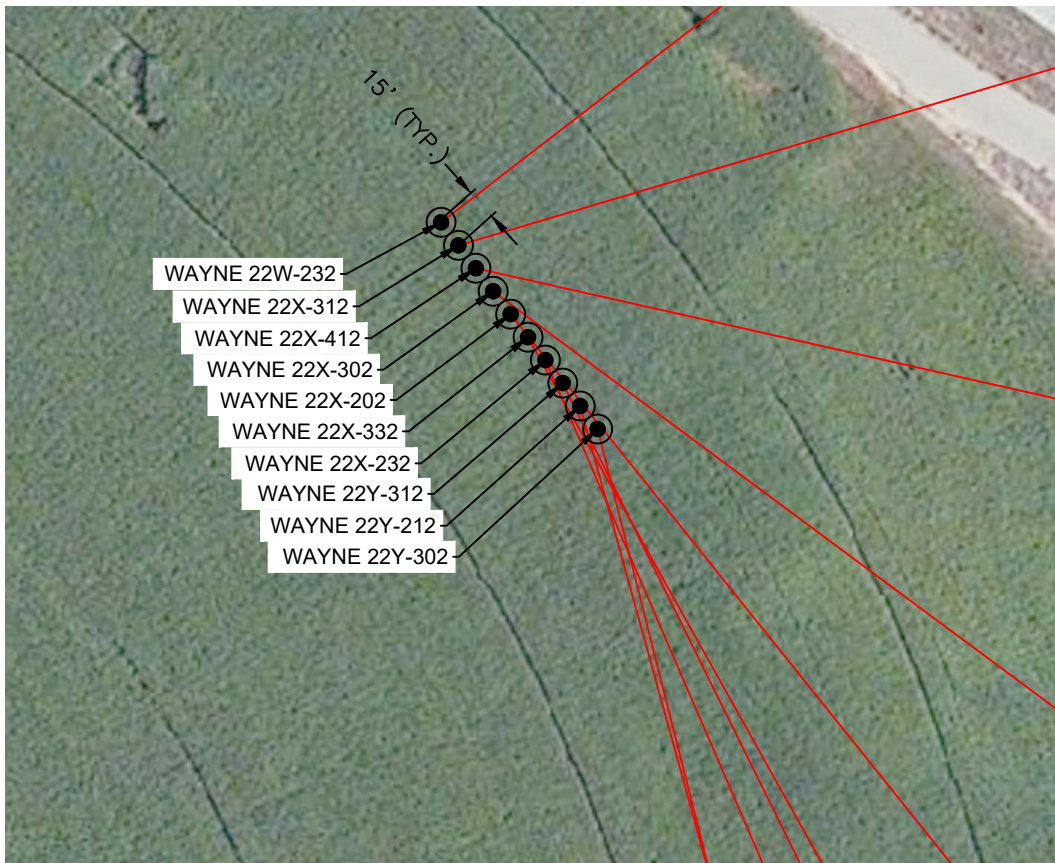







- LEGEND:**
- ALIQUOT CORNER AS DESCRIBED
 - CALCULATED POSITION
 - SURFACE HOLE LOCATION (SHL)
 - ENTRY POINT (EP)
 - BOTTOM HOLE LOCATION (BHL)

MULTI-WELL PLAN

WAYNE 5N64W22X

SECTION: 22
TOWNSHIP: 5N
RANGE: 64W
6TH P.M.
WELD COUNTY, CO



- LEGEND:**
-  ALIQUOT CORNER AS DESCRIBED
 -  CALCULATED POSITION
 -  SURFACE HOLE LOCATION (SHL)
 -  ENTRY POINT (EP)
 -  BOTTOM HOLE LOCATION (BHL)





Washburn Land Surveying
 www.WashburnSurveying.com
 970-232-9645

MULTI-WELL PLAN WAYNE 5N64W22X

SECTION: 22
 TOWNSHIP: 5N
 RANGE: 64W
 6TH P.M.
 WELD COUNTY, CO

| ID | Well Name | Well Number | SHL Footage | SHL Lat | SHL Long |
|----|-----------|-------------|----------------------------|------------|--------------|
| 1 | WAYNE | 22W-232 | 1788 FSL 518 FEL OF 22 | 40.3825353 | -104.5282463 |
| 2 | WAYNE | 22X-312 | 1777 FSL 508 FEL OF 22 | 40.3825046 | -104.5282104 |
| 3 | WAYNE | 22X-412 | 1765 FSL 499 FEL OF 22 | 40.3824716 | -104.5281784 |
| 4 | WAYNE | 22X-302 | 1753 FSL 491 FEL OF 22 | 40.3824385 | -104.5281463 |
| 5 | WAYNE | 22X-202 | 1741 FSL 482 FEL OF 22 | 40.3824054 | -104.5281142 |
| 6 | WAYNE | 22X-332 | 1728 FSL 473 FEL OF 22 | 40.3823723 | -104.5280822 |
| 7 | WAYNE | 22X-232 | 1716 FSL 464 FEL OF 22 | 40.3823392 | -104.5280501 |
| 8 | WAYNE | 22Y-312 | 1704 FSL 455 FEL OF 22 | 40.3823061 | -104.5280181 |
| 9 | WAYNE | 22Y-212 | 1692 FSL 446 FEL OF 22 | 40.3822730 | -104.5279860 |
| 10 | WAYNE | 22Y-302 | 1680 FSL 437 FEL OF 22 | 40.3822400 | -104.5279540 |
| | | | | | |
| ID | Well Name | Well Number | EP Footage | EP Lat | EP Long |
| 1 | WAYNE | 22W-232 | 2143 FSL 40 FEL OF 22 | 40.3835244 | -104.5265324 |
| 2 | WAYNE | 22X-312 | 1905 FSL 40 FEL OF 22 | 40.3828710 | -104.5265302 |
| 3 | WAYNE | 22X-412 | 1651 FSL 40 FEL OF 22 | 40.3821738 | -104.5265280 |
| 4 | WAYNE | 22X-302 | 1405 FSL 40 FEL OF 22 | 40.3814985 | -104.5265255 |
| 5 | WAYNE | 22X-202 | 1170 FSL 40 FEL OF 22 | 40.3808534 | -104.5265234 |
| 6 | WAYNE | 22X-332 | 925 FSL 40 FEL OF 22 | 40.3801808 | -104.5265211 |
| 7 | WAYNE | 22X-232 | 693 FSL 40 FEL OF 22 | 40.3795439 | -104.5265189 |
| 8 | WAYNE | 22Y-312 | 472 FSL 132 FWL OF 23 | 40.3789330 | -104.5258995 |
| 9 | WAYNE | 22Y-212 | 171 FSL 50 FEL OF 22 | 40.3781106 | -104.5265500 |
| 10 | WAYNE | 22Y-302 | 10 FSL 0 40 FEL OF 22 | 40.3776690 | -104.5265126 |
| | | | | | |
| ID | Well Name | Well Number | BHLFootage | BHL Lat | BHL Long |
| 1 | WAYNE | 22W-232 | 2143 FSL 0 FN-S CNTR OF 24 | 40.3833810 | -104.4982697 |
| 2 | WAYNE | 22X-312 | 1905 FSL 0 FN-S CNTR OF 24 | 40.3827278 | -104.4982511 |
| 3 | WAYNE | 22X-412 | 1651 FSL 0 FN-S CNTR OF 24 | 40.3820307 | -104.4982313 |
| 4 | WAYNE | 22X-302 | 1405 FSL 0 FN-S CNTR OF 24 | 40.3813556 | -104.4982121 |
| 5 | WAYNE | 22X-202 | 1170 FSL 0 FN-S CNTR OF 24 | 40.3807106 | -104.4981937 |
| 6 | WAYNE | 22X-332 | 925 FSL 0 FN-S CNTR OF 24 | 40.3800382 | -104.4981746 |
| 7 | WAYNE | 22X-232 | 693 FSL 0 FN-S CNTR OF 24 | 40.3794015 | -104.4981565 |
| 8 | WAYNE | 22Y-312 | 472 FSL 0 FN-S CNTR OF 24 | 40.3787949 | -104.4981393 |
| 9 | WAYNE | 22Y-212 | 235 FSL 0 FN-S CNTR OF 24 | 40.3781445 | -104.4981208 |
| 10 | WAYNE | 22Y-302 | 10 FSL 0 FN-S CNTR OF 24 | 40.3775270 | -104.4981032 |