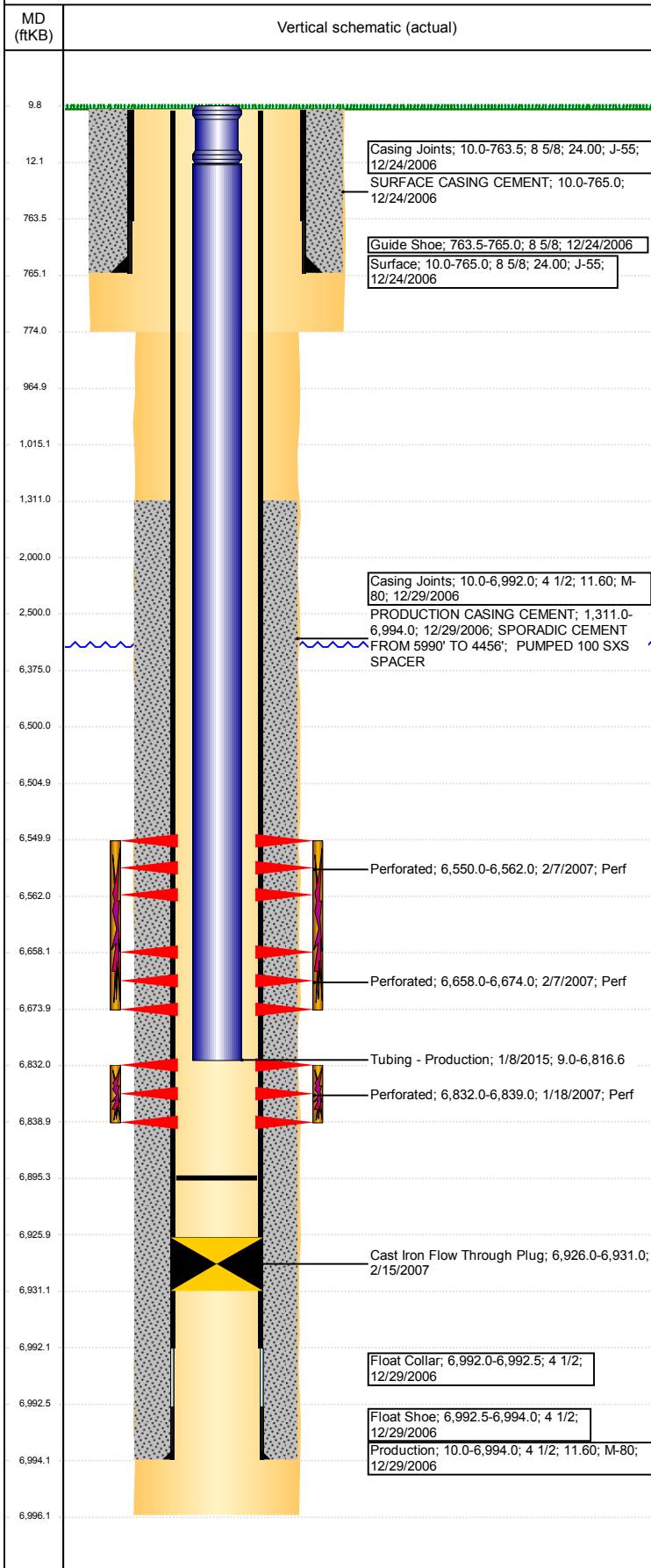


**Well Name: FOSS USX AA05-19**

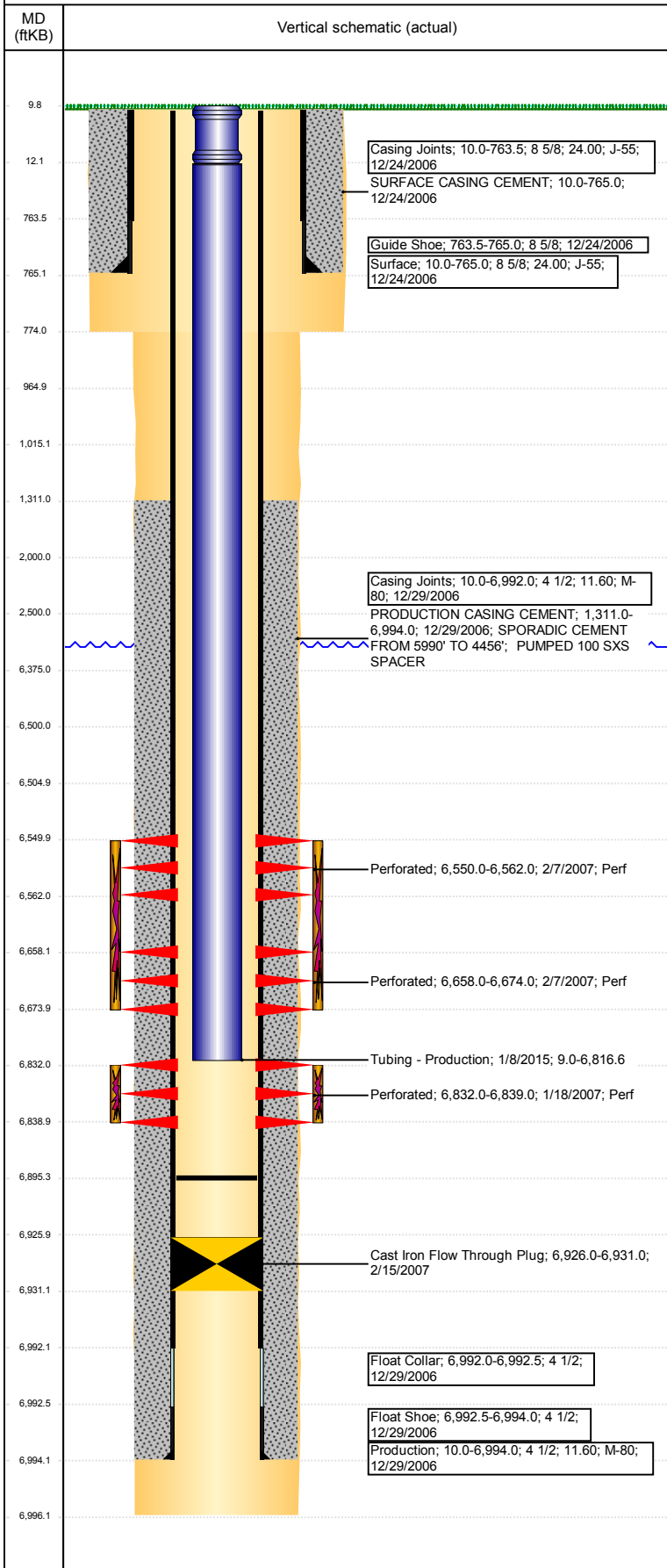
VERTICAL - ORIGINAL HOLE, 8/29/2017 2:56:35 PM



Well Header									
API 05-123-24561		Business Unit DJ BASIN		District 15		Well Config VERTICAL			
Original KB Elevation (ft) 4,724		KB - GL / MSL (ftKB) 10.00		Spud Date 12/23/2006		P & A Date			
Comment TD DISCREPANCY: DRL RPT=6996', ST CMP RPT=7196'									
Directions To Well 74 & 63, S 1/4, E 1/4 TO CENTER PIVOT INTO									
Congressional Location									
Quarter 3 NW		Quarter 4 NW		Section 5	Township 6	Twnshp N/S Dir N	Range 63		Range E/W Dir W
Bottom Hole Location									
North-South Distance (ft)			From N or S Line		East-West Distance (ft)		From E or W Line		
Plug Back Total Depths									
Date		Depth (ftKB)	Method			Com			
12/29/2006		6,979.0	CASING TALLY			FLOAT SHOE W/ BAFFLE			
1/16/2007		6,952.0	CASED HOLE LOG			DEPTH LOGGER ON CBL			
2/15/2007		6,926.0	TAG			CHASE PLUG TO 6926'			
6/18/2014		6,895.2	BOT			224 JTS W/ NO TAG			
Wellbore Sections									
Section Des			Size (in)		Act Top, MD (ftKB)		Act Btm, MD (ftKB)		
SURFACE			12 1/4		10		774		
PRODUCTION			7 7/8		774		6,996		
Zone Statuses									
Zone Name		Status Date	Status	Fluid Type	Job		Prod Method		
CODELL		3/13/2007	PR	Water	DRILLING/CO...		Flowing		
CODELL		10/15/2010	PR						
NIOBRARA		3/13/2007	PR	Water	DRILLING/CO...		Flowing		
NIOBRARA		10/15/2010	PR						
NIOBRARA		3/21/2017	TA						
Casing Strings									
Surface, 765.0ftKB									
Casing Description		Run Date	OD (in)	Wt/Len (l...	Grade	Top, MD (ft...		MD (ftKB)	
Surface		12/24/2006	8 5/8	24.00	J-55	10.0		765.0	
Production, 6,994.0ftKB									
Casing Description		Run Date	OD (in)	Wt/Len (l...	Grade	Top, MD (ft...		MD (ftKB)	
Production		12/29/2006	4 1/2	11.60	M-80	10.0		6,994.0	
Cement									
Description					Top Depth (ftKB)		Bottom Depth (ftKB)		
SURFACE CASING CEMENT					10.0		765.0		
Description					Top Depth (ftKB)		Bottom Depth (ftKB)		
PRODUCTION CASING CEMENT					1,311.0		6,994.0		
Description					Top Depth (ftKB)		Bottom Depth (ftKB)		
Balance Plug					965.0		1,015.0		
Description					Top Depth (ftKB)		Bottom Depth (ftKB)		
Cement Plug					6,375.0		6,500.0		
Description					Top Depth (ftKB)		Bottom Depth (ftKB)		
Balance Plug					12.0		965.0		
Description					Top Depth (ftKB)		Bottom Depth (ftKB)		
Balance Plug					2,000.0		2,500.0		
Tubing Strings									
Tubing Description		Run Date	String...	ID (in)	Wt (lb/ft)	Grade	Len (ft)		Set De...
Tubing		2/16/2007	2 3/8	2.00	4.70	J-55	6,793.00		
Tubing Description		Run Date	String...	ID (in)	Wt (lb/ft)	Grade	Len (ft)		Set De...
Tubing - Production		6/19/2014	2 3/8	2.00	4.70	J-55	6,460.65		
Tubing Description		Run Date	String...	ID (in)	Wt (lb/ft)	Grade	Len (ft)		Set De...
Tubing - Production		1/8/2015	2 3/8	2.00	4.70	J-55	6,807.61		
Other In Hole									
Run Date		Des			OD (in)	Top (ftKB)		Btm (ftKB)	
2/15/2007		Cast Iron Flow Through Plug			4 1/2	6,926.0		6,931.0	
8/17/2017		Cast Iron Bridge Plug			3.99	6,500.0		6,505.0	
Logs									
Date		Type				Top, MD (ftKB)		Btm, MD (ftKB)	
12/29/2006		COMPENSATED DENSITY				2,700.0		7,003.0	
12/29/2006		INDUCTION				755.0		7,023.0	

**Well Name: FOSS USX AA05-19**

VERTICAL - ORIGINAL HOLE, 8/29/2017 2:56:36 PM



Logs			
Date	Type	Top, MD (ftKB)	Btm, MD (ftKB)
1/16/2007	CBL/CCL/GR	1,168.0	6,950.0
10/24/2013	GYRO	10.0	6,750.0

Perforation Data					
Linked Zone	Bnch/St g	Sum of Entered Shot Total	Top (ftKB)	Btm (ftKB)	Date
NIORARA, ORIGINAL HOLE	A	72	6,550.00	6,562.00	2/7/2007
NIORARA, ORIGINAL HOLE	B	96	6,658.00	6,674.00	2/7/2007
CODELL, ORIGINAL HOLE		28	6,832.00	6,839.00	1/18/2007
<b>Total (Sum)</b>		<b>196</b>			

Stimulation Intervals		
Start Date 2/7/2007	Primary Job Type DRILLING/COMPLETION - ORIGINAL	
Technical Result	Tech Result Details	Tech Result Note
Comment		
Start Date 2/7/2007	Primary Job Type DRILLING/COMPLETION - ORIGINAL	
Technical Result	Tech Result Details	Tech Result Note
Comment		