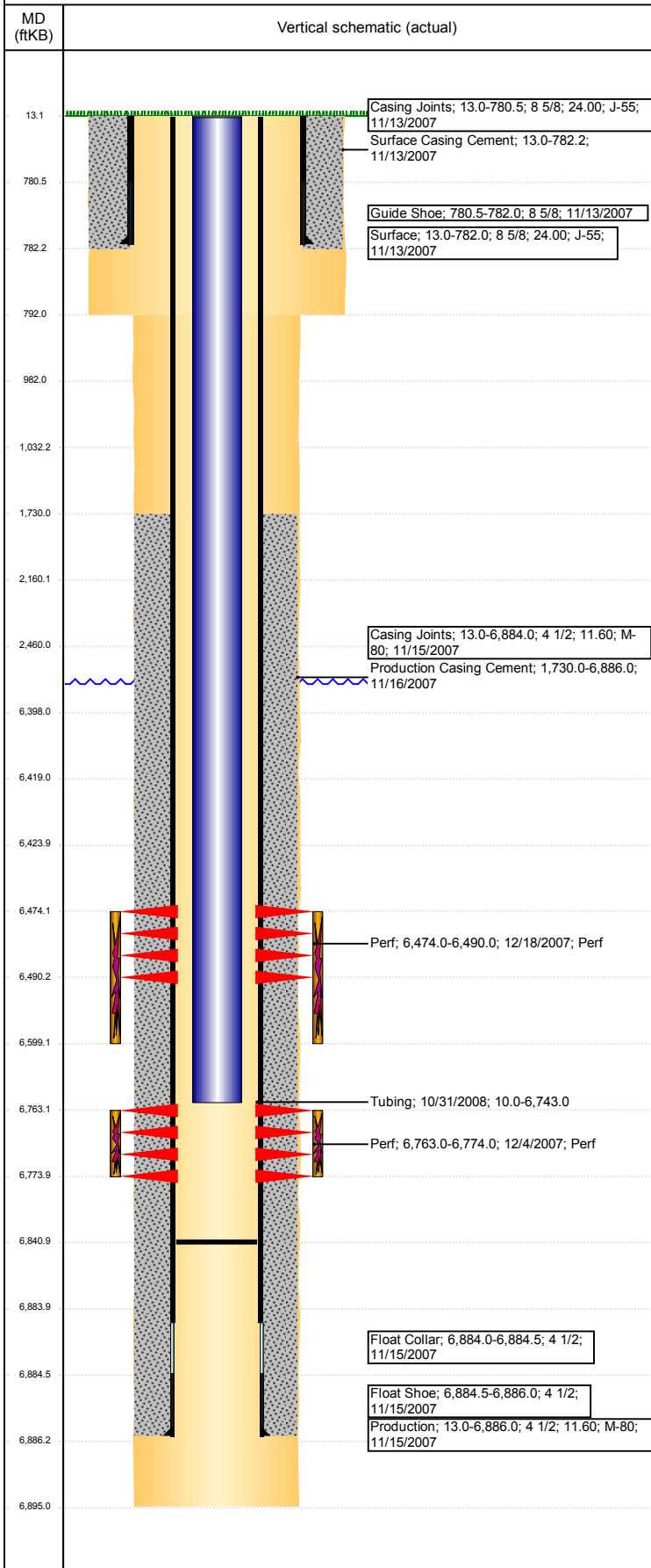


Well Name: THRALL USX AA19-25

VERTICAL - ORIGINAL HOLE, 8/29/2017 2:24:24 PM



Well Header						
API 05-123-26516	Business Unit DJ BASIN		District 15		Well Config VERTICAL	
Original KB Elevation (ft) 4,660	KB - GL / MSL (ftKB) 13.00		Spud Date 11/13/2007		P & A Date	
Comment TD DISCREPANCY: DRL RPT=6908', ST CMP=6895'						
Directions To Well WCR 66 & 61, NORTH 2/10, EAST 1/10, NORTH INTO						
Congressional Location						
Quarter 3 NW	Quarter 4 SW	Section 19	Township 6	Twtnshp N/S Dir N	Range 63	Range E/W Dir W
Bottom Hole Location						
North-South Distance (ft)		From N or S Line		East-West Distance (ft)		From E or W Line
Plug Back Total Depths						
Date	Depth (ftKB)	Method		Com		
10/31/2008	6,841.0	TAG		C/O WELL W/N2, LAND TBG		
Wellbore Sections						
Section Des		Size (in)		Act Top, MD (ftKB)		Act Btm, MD (ftKB)
SURFACE		12 1/4		13		792
Production		7 7/8		792		6,895
Zone Statuses						
Zone Name	Status Date	Status	Fluid Type	Job	Prod Method	
NIOBRARA	12/21/2007	PR		DRILLING/CO...		
CODELL	12/21/2007	PR		DRILLING/CO...		
Casing Strings						
Surface, 782.0ftKB						
Casing Description Surface	Run Date 11/13/2007	OD (in) 8 5/8	Wt/Len (l... 24.00	Grade J-55	Top, MD (ft... 13.0	MD (ftKB) 782.0
Production, 6,886.0ftKB						
Casing Description Production	Run Date 11/15/2007	OD (in) 4 1/2	Wt/Len (l... 11.60	Grade M-80	Top, MD (ft... 13.0	MD (ftKB) 6,886.0
Cement						
Description Surface Casing Cement				Top Depth (ftKB) 13.0	Bottom Depth (ftKB) 782.2	
Description Production Casing Cement				Top Depth (ftKB) 1,730.0	Bottom Depth (ftKB) 6,886.0	
Description Balance Plug				Top Depth (ftKB) 2,160.0	Bottom Depth (ftKB) 2,460.0	
Description Dump Bail				Top Depth (ftKB) 6,398.0	Bottom Depth (ftKB) 6,419.0	
Description Shoe Plug				Top Depth (ftKB) 13.0	Bottom Depth (ftKB) 982.0	
Description				Top Depth (ftKB) 982.0	Bottom Depth (ftKB) 1,032.0	
Tubing Strings						
Tubing Description Tubing	Run Date 10/31/2008	String... 2 3/8	ID (in) 2.00	Wt (lb/ft) 4.70	Grade J-55	Len (ft) 6,732.97
Set De...						
Other In Hole						
Run Date	Des			OD (in)	Top (ftKB)	Btm (ftKB)
8/8/2017	Cast Iron Bridge Plug			3.99	6,419.0	6,424.0
Logs						
Date	Type			Top, MD (ftKB)	Btm, MD (ftKB)	
11/28/2007	Cement Bond			1,500.0	6,816.0	
10/2/2015	GYRO			10.0	6,650.0	
Perforation Data						
Linked Zone	Bnch/St g	Sum of Entered Shot Total	Top (ftKB)	Btm (ftKB)	Date	
		64	6,474.00	6,490.00	12/18/2007	
CODELL, ORIGINAL HOLE		44	6,763.00	6,774.00	12/4/2007	
Total (Sum)		108				
Stimulation Intervals						
Start Date 12/18/2007	Primary Job Type DRILLING/COMPLETION - ORIGINAL					
Technical Result Success		Tech Result Details According to Plan			Tech Result Note	
Comment (CODELL): WENT WELL WITH NO ISSUES TO REPORT.						

Well Name: THRALL USX AA19-25

VERTICAL - ORIGINAL HOLE, 8/29/2017 2:24:25 PM

Stimulation Intervals

Start Date 12/18/2007	Primary Job Type DRILLING/COMPLETION - ORIGINAL	
Technical Result Failure	Tech Result Details Mechanical	Tech Result Note
Comment (NIOBRARA): SHUT DOWN 652 BBLS INTO JOB BECAUSE BLENDER LOST HYDRAULIC PUMP. WAITED FOR A REPLACEMENT BLENDER AND RESUMED JOB, ADDED 90 BBLS TO FR-45 PAD DESIGN. WAS DOWN FOR A TOTAL OF 3 HRS 15 MINUTES. SHUT DOWN AGAIN AT THE START OF X-LINK PAD BECUASE X-LINKERS WHERE NOT RUNNING, ADDED 142 BBLS TO X-LINK PAD STAGE BECAUSE FIRST HALF WAS NOT X-LINKED AND CHANGED 2 LB STAGE TO 2.35 TO MAKE UP WATER ADDED TO X-LINK PAD. HAD A COMPARTMENT OF SAND (56K LBS) THAT HAD 2% FINES, GOT SAMPLE WHILE COMING OUT OF THAT COMPARTMENT DURING THE JOB AND IT PASSED		

