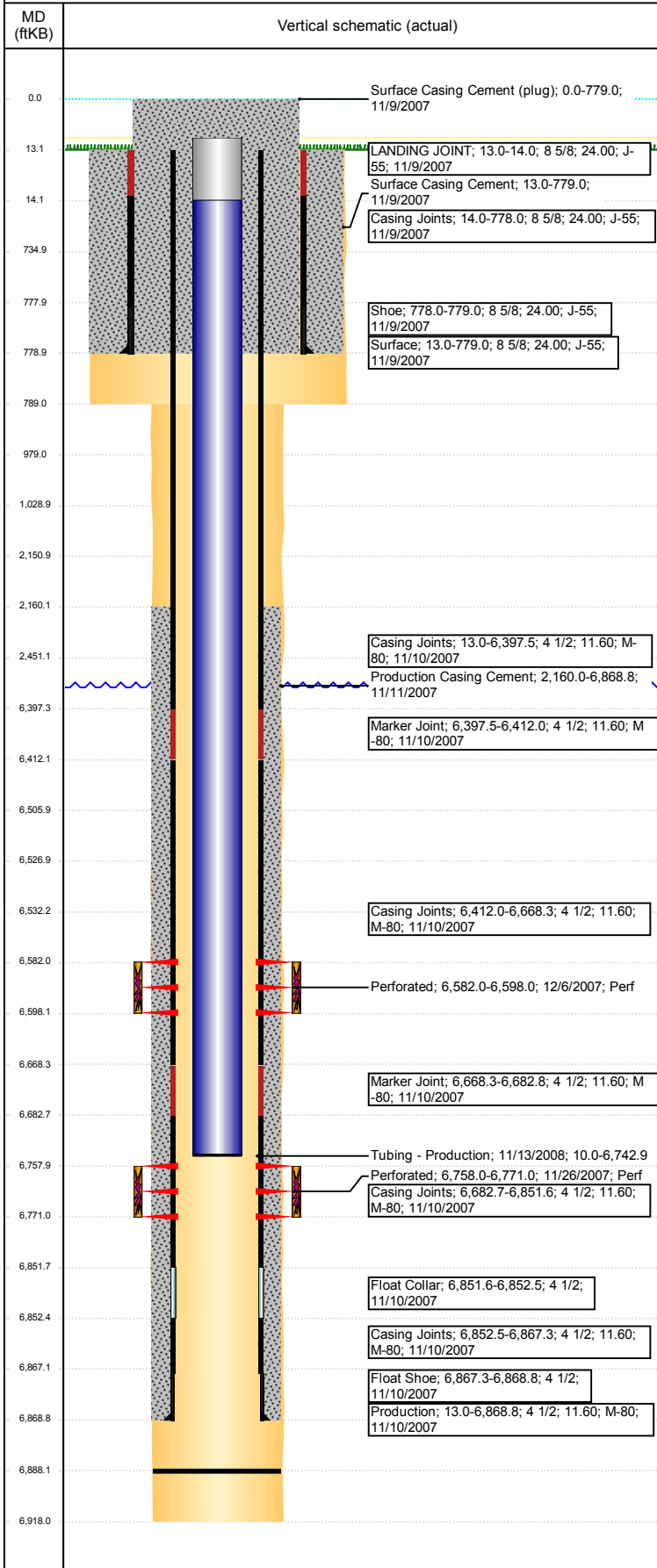


Well Name: THRALL USX AA19-12

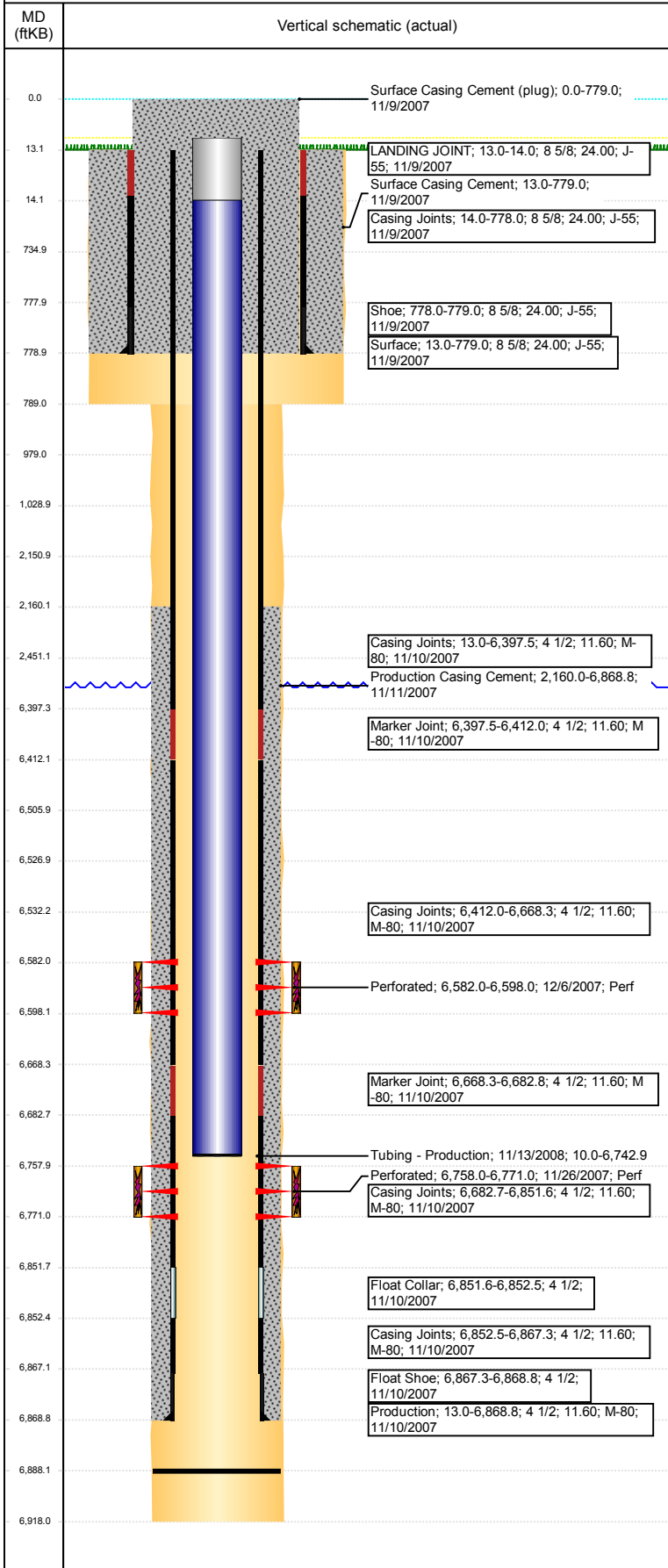
VERTICAL - ORIGINAL HOLE, 8/28/2017 1:04:54 PM



Well Header					
API	05-123-27052	Business Unit	DJ BASIN	District	15
Original KB Elevation (ft)	4,660	KB - GL / MSL (ftKB)	13.00	Spud Date	11/8/2007
Comment	11729900 - battery for gas only; 91719900 is oil only				
Directions To Well	WCR 61 & 66, NORTH 4/10, EAST 1/10 INTO				
Congressional Location					
Quarter 3	Quarter 4	Section	Township	Twnshp N/S Dir	Range E/W Dir
		19	6	N	63 W
Bottom Hole Location					
North-South Distance (ft)	From N or S Line	East-West Distance (ft)	From E or W Line		
Plug Back Total Depths					
Date	Depth (ftKB)	Method	Com		
11/19/2007	6,824.0	Cased Hole log			
11/13/2008	6,888.0	TAG			
Wellbore Sections					
Section Des	Size (in)	Act Top, MD (ftKB)	Act Btm, MD (ftKB)		
Surface	12 1/4	13	789		
Production	6 1/4	789	6,918		
Zone Statuses					
Zone Name	Status Date	Status	Fluid Type	Job	Prod Method
CODELL	12/9/2007	PR		DRILLING/CO...	
NIOBRARA	12/9/2007	PR		DRILLING/CO...	
Casing Strings					
Surface, 779.0ftKB					
Casing Description	Run Date	OD (in)	Wt/Len (l...)	Grade	Top, MD (ft...)
Surface	11/9/2007	8 5/8	24.00	J-55	13.0
MD (ftKB)	779.0				
Production, 6,868.8ftKB					
Casing Description	Run Date	OD (in)	Wt/Len (l...)	Grade	Top, MD (ft...)
Production	11/10/2007	4 1/2	11.60	M-80	13.0
MD (ftKB)	6,868.8				
Cement					
Description	Top Depth (ftKB)	Bottom Depth (ftKB)			
Surface Casing Cement	13.0	779.0			
Description	Top Depth (ftKB)	Bottom Depth (ftKB)			
Production Casing Cement	2,160.0	6,868.8			
Description	Top Depth (ftKB)	Bottom Depth (ftKB)			
Dump Bail	6,506.0	6,527.0			
Description	Top Depth (ftKB)	Bottom Depth (ftKB)			
Balance Plug	2,151.0	2,451.0			
Description	Top Depth (ftKB)	Bottom Depth (ftKB)			
Shoe Plug	13.0	979.0			
Description	Top Depth (ftKB)	Bottom Depth (ftKB)			
	979.0	1,029.0			
Tubing Strings					
Tubing Description	Run Date	String...	ID (in)	Wt (lb/ft)	Grade
Tubing - Production	11/13/2008	2 3/8	2.00	4.70	J-55
Len (ft)	6,732.86				
Set De...					
Other In Hole					
Run Date	Des	OD (in)	Top (ftKB)	Btm (ftKB)	
11/13/2008	Cast Iron Bridge Plug	3.99	6,527.0	6,532.0	
Logs					
Date	Type	Top, MD (ftKB)	Btm, MD (ftKB)		
11/19/2007	Cement Bond	1,950.0	6,824.0		
10/2/2015	GYRO	10.0	6,650.0		
Perforation Data					
Linked Zone	Bnch/St g	Sum of Entered Shot Total	Top (ftKB)	Btm (ftKB)	Date
NIOBRARA, ORIGINAL HOLE	B	64	6,582.00	6,598.00	12/6/2007
CODELL, ORIGINAL HOLE		52	6,758.00	6,771.00	11/26/2007
Total (Sum)		116			

Well Name: THRALL USX AA19-12

VERTICAL - ORIGINAL HOLE, 8/28/2017 1:04:54 PM



Stimulation Intervals		
Start Date 12/6/2007	Primary Job Type DRILLING/COMPLETION - ORIGINAL	
Technical Result Success	Tech Result Details According to Plan	Tech Result Note
Comment CODELL FRAC WENT WELL. DISCHARGE PRESSURE WAS BOUNCING DURING FLUSH.		
Start Date 12/6/2007	Primary Job Type DRILLING/COMPLETION - ORIGINAL	
Technical Result Success	Tech Result Details According to Plan	Tech Result Note
Comment NIOBRARA FRAC WENT WELL.		