

# PETROSHARE

Location: COLORADO Slot: SLOT#16 CONNER 19-18-4NBH (350°FSL & 2020°FWL, SEC.19)  
Field: ADAMS COUNTY (NAD83/ TRUE NORTH) Well: CONNER 19-18-4NBH  
Facility: SEC.19-T01S-R65W Wellbore: CONNER 19-18-4NBH PWB

Plot reference wellpath is CONNER 19-18-4NBH PWP (REV-A.0)

Grid System: NAD83 / Lambert Colorado SP, Northern Zone (501), US feet

True vertical depths are referenced to RIG (5142'GL + 13'KB) (RKB)

North Reference: True north

Measured depths are referenced to RIG (5142'GL + 13'KB) (RKB)

Scale: True distance

RIG (5142'GL + 13'KB) (RKB) to Mean Sea Level: 5155 feet

Depths are in feet

Mean Sea Level to Mud line (At Slot: SLOT#16 CONNER 19-18-4NBH (350°FSL & 2020°FWL, SEC.19): 0 feet

Created by: ingmjmr on 2017-07-28

Coordinates are in feet referenced to Slot

Database: WA\_DEN\_Denver\_Delth

## Location Information

Facility Name				Grid East (US ft)	Grid North (US ft)	Latitude	Longitude
SEC.19-T01S-R65W				3222009.380	1223555.333	39°56'39.552"N	104°42'29.448"W
Slot	Local N (ft)	Local E (ft)		Grid East (US ft)	Grid North (US ft)	Latitude	Longitude
SLOT#16 CONNER 19-18-4NBH (350°FSL & 2020°FWL, SEC.19)	0.00	224.31		3222233.677	1223557.336	39°56'39.552"N	104°42'26.968"W
RIG (5142'GL + 13'KB) (RKB) to Mud line (At Slot: SLOT#16 CONNER 19-18-4NBH (350°FSL & 2020°FWL, SEC.19))				5155ft			
Mean Sea Level to Mud line (At Slot: SLOT#16 CONNER 19-18-4NBH (350°FSL & 2020°FWL, SEC.19))				0ft			
RIG (5142'GL + 13'KB) (RKB) to Mean Sea Level				5155ft			

## Well Profile Data

Design Comment	MD (ft)	Inc (°)	Az (°)	TVD (ft)	Local N (ft)	Local E (ft)	DLS (°/100ft)	VS (ft)
Tie On	13.00	0.000	102.034	13.00	0.00	0.00	0.00	0.00
End of Tangent	900.00	0.000	102.034	900.00	0.00	0.00	0.00	0.00
End of Build	2032.10	22.642	102.034	2002.86	-46.03	215.94	2.00	4.63
End of Tangent	7221.62	22.642	102.034	6792.42	-462.57	2169.85	0.00	46.52
End of 3D Arc	8169.14	90.000	359.609	7367.00	110.00	2400.00	10.00	656.58
End of Tangent	17978.29	90.000	359.609	7367.00	9918.92	2333.00	0.00	10189.59

## Survey Program

Start MD (ft)	End MD (ft)	Tool	Model	Log Name/Comment	Wellbore
13.00	700.00	BHI NavTrak	Custom BHI NavTrak (Standard Rotating+Axial Corr) (Rockies 0.03Gt model)		CONNER 19-18-4NBH PWB
700.00	17984.08	BHI AutoTrak Curve	Custom BHI AutoTrak Curve (Axial Corr, Short spacing) (Rockies 0.03Gt model)		CONNER 19-18-4NBH PWB

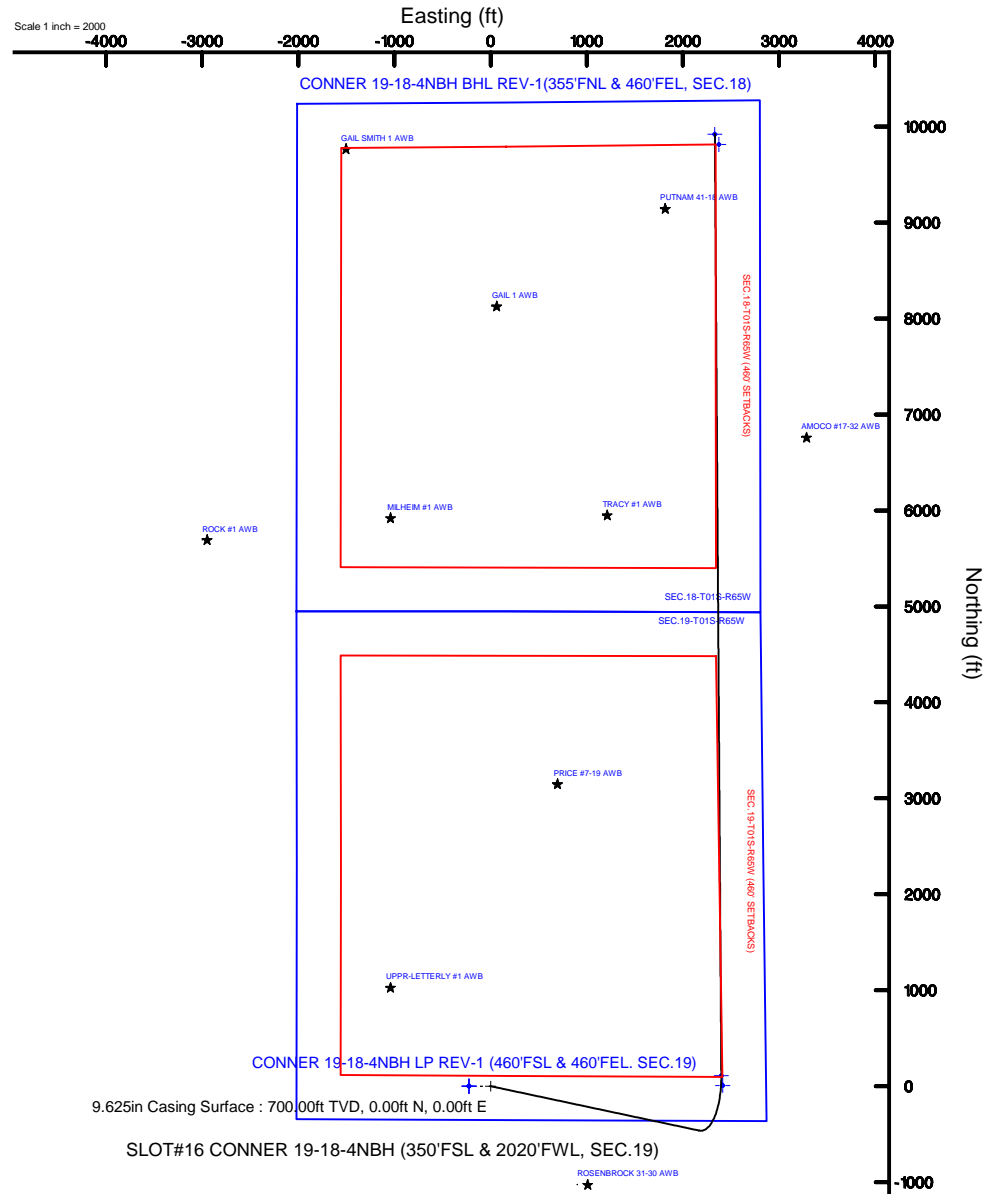
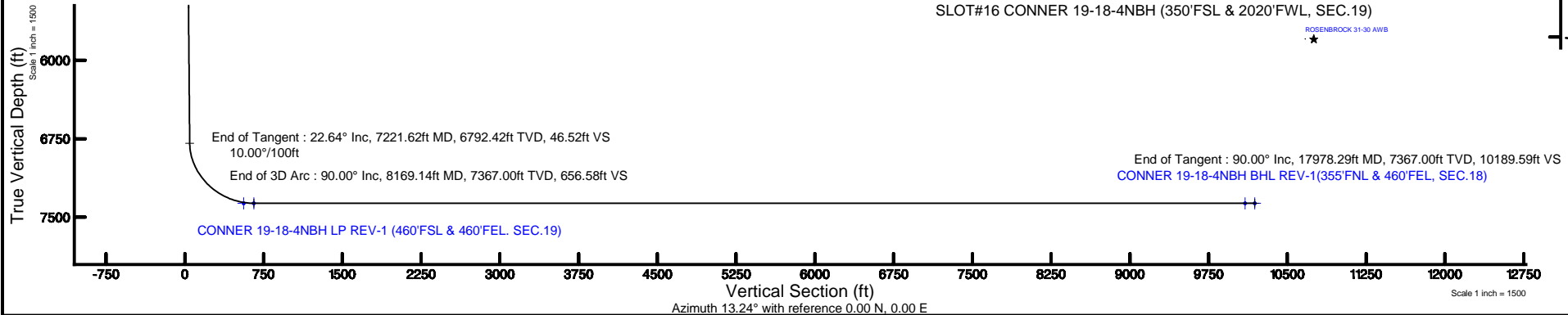
## Hole and Casing Sections

Name	Start MD (ft)	End MD (ft)	Interval (ft)	Start TVD (ft)	End TVD (ft)	Start Local N (ft)	Start Local E (ft)	End Local N (ft)	End Local E (ft)	Wellbore
9.625in Casing Surface	13.00	700.00	687.00	13.00	700.00	0.00	0.00	0.00	0.00	CONNER 19-18-4NBH PWB
8.5in Open Hole	700.00	17978.29	17278.29	700.00	7367.00	0.00	0.00	9918.92	2333.00	CONNER 19-18-4NBH PWB



BGGM (1900.0 to 2019.0) Dip: 66.52° Field: 52170.6 nT  
Magnetic North is 8.32 degrees East of True North (at 7/17/2017)

To correct azimuth from Magnetic to True add 8.32 degrees





# Planned Wellpath Report

CONNER 19-18-4NBH PWP (REV-A.0)

Page 1 of 10

**BAKER  
HUGHES**  
a GE company



## REFERENCE WELLPATH IDENTIFICATION

Operator	PETROSHARE	Slot	SLOT#16 CONNER 19-18-4NBH (350'FSL & 2020'FWL, SEC.19)
Area	COLORADO	Well	CONNER 19-18-4NBH
Field	ADAMS COUNTY (NAD83/ TRUE NORTH)	Wellbore	CONNER 19-18-4NBH PWB
Facility	SEC.19-T01S-R65W		

## REPORT SETUP INFORMATION

Projection System	NAD83 / Lambert Colorado SP, Northern Zone (501), US feet	Software System	WellArchitect® 5.1
North Reference	True	User	Ingmjmr
Scale	0.999971	Report Generated	7/28/2017 at 8:58:18 AM
Convergence at slot	0.51° East	Database/Source file	WA_DEN_Denver_Defn/CONNER_19-18-4NBH_PWP__REV-A.0_.xml

## WELLPATH LOCATION

	Local coordinates		Grid coordinates		Geographic coordinates	
	North[ft]	East[ft]	Easting[US ft]	Northing[US ft]	Latitude	Longitude
Slot Location	0.00	224.31	3222233.68	1223557.34	39°56'39.552"N	104°42'26.568"W
Facility Reference Pt			3222009.38	1223555.33	39°56'39.552"N	104°42'29.448"W
Field Reference Pt			3175478.75	1240632.48	39°59'31.992"N	104°52'25.320"W

## WELLPATH DATUM

Calculation method	Minimum curvature	RIG (5142'GL + 13'KB) (RKB) to Facility Vertical Datum	5155.00ft
Horizontal Reference Pt	Slot	RIG (5142'GL + 13'KB) (RKB) to Mean Sea Level	5155.00ft
Vertical Reference Pt	RIG (5142'GL + 13'KB) (RKB)	RIG (5142'GL + 13'KB) (RKB) to Mud Line at Slot (SLOT#16 CONNER 19-18-4NBH (350'FSL & 2020'FWL, SEC.19))	5155.00ft
MD Reference Pt	RIG (5142'GL + 13'KB) (RKB)	Section Origin	N 0.00, E 0.00 ft
Field Vertical Reference	Mean Sea Level	Section Azimuth	13.24°



# Planned Wellpath Report

CONNER 19-18-4NBH PWP (REV-A.0)

Page 2 of 10



## REFERENCE WELLPATH IDENTIFICATION

Operator	PETROSHARE	Slot	SLOT#16 CONNER 19-18-4NBH (350'FSL & 2020'FWL, SEC.19)
Area	COLORADO	Well	CONNER 19-18-4NBH
Field	ADAMS COUNTY (NAD83/ TRUE NORTH)	Wellbore	CONNER 19-18-4NBH PWB
Facility	SEC.19-T01S-R65W		

## WELLPATH DATA (191 stations) † = interpolated/extrapolated station

MD [ft]	Inclination [°]	Azimuth [°]	TVD [ft]	Vert Sect [ft]	North [ft]	East [ft]	Latitude	Longitude	DLS [°/100ft]	Comments
0.00†	0.000	102.034	0.00	0.00	0.00	0.00	39°56'39.552"N	104°42'26.568"W	0.00	
13.00	0.000	102.034	13.00	0.00	0.00	0.00	39°56'39.552"N	104°42'26.568"W	0.00	Tie On
113.00†	0.000	102.034	113.00	0.00	0.00	0.00	39°56'39.552"N	104°42'26.568"W	0.00	
213.00†	0.000	102.034	213.00	0.00	0.00	0.00	39°56'39.552"N	104°42'26.568"W	0.00	
313.00†	0.000	102.034	313.00	0.00	0.00	0.00	39°56'39.552"N	104°42'26.568"W	0.00	
413.00†	0.000	102.034	413.00	0.00	0.00	0.00	39°56'39.552"N	104°42'26.568"W	0.00	
513.00†	0.000	102.034	513.00	0.00	0.00	0.00	39°56'39.552"N	104°42'26.568"W	0.00	
613.00†	0.000	102.034	613.00	0.00	0.00	0.00	39°56'39.552"N	104°42'26.568"W	0.00	
700.00†	0.000	102.034	700.00	0.00	0.00	0.00	39°56'39.552"N	104°42'26.568"W	0.00	FOX HILLS
713.00†	0.000	102.034	713.00	0.00	0.00	0.00	39°56'39.552"N	104°42'26.568"W	0.00	
813.00†	0.000	102.034	813.00	0.00	0.00	0.00	39°56'39.552"N	104°42'26.568"W	0.00	
900.00	0.000	102.034	900.00	0.00	0.00	0.00	39°56'39.552"N	104°42'26.568"W	0.00	End of Tangent
913.00†	0.260	102.034	913.00	0.00	-0.01	0.03	39°56'39.552"N	104°42'26.568"W	2.00	
1013.00†	2.260	102.034	1012.97	0.05	-0.46	2.18	39°56'39.547"N	104°42'26.540"W	2.00	
1113.00†	4.260	102.034	1112.80	0.17	-1.65	7.74	39°56'39.536"N	104°42'26.469"W	2.00	
1213.00†	6.260	102.034	1212.38	0.36	-3.56	16.71	39°56'39.517"N	104°42'26.354"W	2.00	
1313.00†	8.260	102.034	1311.57	0.62	-6.20	29.07	39°56'39.491"N	104°42'26.195"W	2.00	
1413.00†	10.260	102.034	1410.26	0.96	-9.55	44.80	39°56'39.458"N	104°42'25.993"W	2.00	
1513.00†	12.260	102.034	1508.33	1.37	-13.62	63.90	39°56'39.417"N	104°42'25.748"W	2.00	
1613.00†	14.260	102.034	1605.66	1.85	-18.40	86.33	39°56'39.370"N	104°42'25.460"W	2.00	
1713.00†	16.260	102.034	1702.13	2.40	-23.89	112.07	39°56'39.316"N	104°42'25.129"W	2.00	
1813.00†	18.260	102.034	1797.62	3.02	-30.08	141.09	39°56'39.255"N	104°42'24.757"W	2.00	
1913.00†	20.260	102.034	1892.02	3.72	-36.95	173.35	39°56'39.187"N	104°42'24.342"W	2.00	
2013.00†	22.260	102.034	1985.21	4.48	-44.51	208.81	39°56'39.112"N	104°42'23.887"W	2.00	
2032.10	22.642	102.034	2002.86	4.63	-46.03	215.94	39°56'39.097"N	104°42'23.795"W	2.00	End of Build
2113.00†	22.642	102.034	2077.53	5.28	-52.53	246.40	39°56'39.033"N	104°42'23.404"W	0.00	
2213.00†	22.642	102.034	2169.82	6.09	-60.55	284.05	39°56'38.954"N	104°42'22.921"W	0.00	
2313.00†	22.642	102.034	2262.11	6.90	-68.58	321.70	39°56'38.874"N	104°42'22.438"W	0.00	
2413.00†	22.642	102.034	2354.41	7.70	-76.61	359.35	39°56'38.795"N	104°42'21.954"W	0.00	
2513.00†	22.642	102.034	2446.70	8.51	-84.63	397.01	39°56'38.716"N	104°42'21.471"W	0.00	



# Planned Wellpath Report

CONNER 19-18-4NBH PWP (REV-A.0)

Page 3 of 10



## REFERENCE WELLPATH IDENTIFICATION

Operator	PETROSHARE	Slot	SLOT#16 CONNER 19-18-4NBH (350'FSL & 2020'FWL, SEC.19)
Area	COLORADO	Well	CONNER 19-18-4NBH
Field	ADAMS COUNTY (NAD83/ TRUE NORTH)	Wellbore	CONNER 19-18-4NBH PWB
Facility	SEC.19-T01S-R65W		

## WELLPATH DATA (191 stations) † = interpolated/extrapolated station

MD [ft]	Inclination [°]	Azimuth [°]	TVD [ft]	Vert Sect [ft]	North [ft]	East [ft]	Latitude	Longitude	DLS [°/100ft]	Comments
2613.00†	22.642	102.034	2538.99	9.32	-92.66	434.66	39°56'38.636"N	104°42'20.987"W	0.00	
2713.00†	22.642	102.034	2631.29	10.13	-100.69	472.31	39°56'38.557"N	104°42'20.504"W	0.00	
2813.00†	22.642	102.034	2723.58	10.93	-108.71	509.96	39°56'38.478"N	104°42'20.021"W	0.00	
2913.00†	22.642	102.034	2815.87	11.74	-116.74	547.61	39°56'38.398"N	104°42'19.537"W	0.00	
3013.00†	22.642	102.034	2908.16	12.55	-124.77	585.26	39°56'38.319"N	104°42'19.054"W	0.00	
3113.00†	22.642	102.034	3000.46	13.36	-132.79	622.91	39°56'38.240"N	104°42'18.570"W	0.00	
3213.00†	22.642	102.034	3092.75	14.16	-140.82	660.56	39°56'38.160"N	104°42'18.087"W	0.00	
3313.00†	22.642	102.034	3185.04	14.97	-148.85	698.21	39°56'38.081"N	104°42'17.604"W	0.00	
3413.00†	22.642	102.034	3277.34	15.78	-156.87	735.87	39°56'38.002"N	104°42'17.120"W	0.00	
3513.00†	22.642	102.034	3369.63	16.58	-164.90	773.52	39°56'37.922"N	104°42'16.637"W	0.00	
3613.00†	22.642	102.034	3461.92	17.39	-172.93	811.17	39°56'37.843"N	104°42'16.153"W	0.00	
3713.00†	22.642	102.034	3554.21	18.20	-180.95	848.82	39°56'37.764"N	104°42'15.670"W	0.00	
3813.00†	22.642	102.034	3646.51	19.01	-188.98	886.47	39°56'37.684"N	104°42'15.187"W	0.00	
3913.00†	22.642	102.034	3738.80	19.81	-197.01	924.12	39°56'37.605"N	104°42'14.703"W	0.00	
4013.00†	22.642	102.034	3831.09	20.62	-205.03	961.77	39°56'37.526"N	104°42'14.220"W	0.00	
4113.00†	22.642	102.034	3923.39	21.43	-213.06	999.42	39°56'37.446"N	104°42'13.736"W	0.00	
4213.00†	22.642	102.034	4015.68	22.23	-221.09	1037.07	39°56'37.367"N	104°42'13.253"W	0.00	
4313.00†	22.642	102.034	4107.97	23.04	-229.11	1074.72	39°56'37.288"N	104°42'12.770"W	0.00	
4413.00†	22.642	102.034	4200.26	23.85	-237.14	1112.38	39°56'37.208"N	104°42'12.286"W	0.00	
4513.00†	22.642	102.034	4292.56	24.66	-245.17	1150.03	39°56'37.129"N	104°42'11.803"W	0.00	
4613.00†	22.642	102.034	4384.85	25.46	-253.19	1187.68	39°56'37.050"N	104°42'11.319"W	0.00	
4713.00†	22.642	102.034	4477.14	26.27	-261.22	1225.33	39°56'36.970"N	104°42'10.836"W	0.00	
4813.00†	22.642	102.034	4569.44	27.08	-269.24	1262.98	39°56'36.891"N	104°42'10.353"W	0.00	
4913.00†	22.642	102.034	4661.73	27.89	-277.27	1300.63	39°56'36.812"N	104°42'09.869"W	0.00	
5013.00†	22.642	102.034	4754.02	28.69	-285.30	1338.28	39°56'36.732"N	104°42'09.386"W	0.00	
5113.00†	22.642	102.034	4846.31	29.50	-293.32	1375.93	39°56'36.653"N	104°42'08.902"W	0.00	
5127.83†	22.642	102.034	4860.00	29.62	-294.51	1381.52	39°56'36.641"N	104°42'08.831"W	0.00	SUSSEX/SHANNON
5213.00†	22.642	102.034	4938.61	30.31	-301.35	1413.58	39°56'36.574"N	104°42'08.419"W	0.00	
5313.00†	22.642	102.034	5030.90	31.11	-309.38	1451.24	39°56'36.494"N	104°42'07.936"W	0.00	
5413.00†	22.642	102.034	5123.19	31.92	-317.40	1488.89	39°56'36.415"N	104°42'07.452"W	0.00	



# Planned Wellpath Report

CONNER 19-18-4NBH PWP (REV-A.0)

Page 4 of 10



## REFERENCE WELLPATH IDENTIFICATION

Operator	PETROSHARE	Slot	SLOT#16 CONNER 19-18-4NBH (350'FSL & 2020'FWL, SEC.19)
Area	COLORADO	Well	CONNER 19-18-4NBH
Field	ADAMS COUNTY (NAD83/ TRUE NORTH)	Wellbore	CONNER 19-18-4NBH PWB
Facility	SEC.19-T01S-R65W		

## WELLPATH DATA (191 stations) † = interpolated/extrapolated station

MD [ft]	Inclination [°]	Azimuth [°]	TVD [ft]	Vert Sect [ft]	North [ft]	East [ft]	Latitude	Longitude	DLS [°/100ft]	Comments
5513.00†	22.642	102.034	5215.49	32.73	-325.43	1526.54	39°56'36.335"N	104°42'06.969"W	0.00	
5613.00†	22.642	102.034	5307.78	33.54	-333.46	1564.19	39°56'36.256"N	104°42'06.485"W	0.00	
5713.00†	22.642	102.034	5400.07	34.34	-341.48	1601.84	39°56'36.177"N	104°42'06.002"W	0.00	
5813.00†	22.642	102.034	5492.36	35.15	-349.51	1639.49	39°56'36.097"N	104°42'05.519"W	0.00	
5913.00†	22.642	102.034	5584.66	35.96	-357.54	1677.14	39°56'36.018"N	104°42'05.035"W	0.00	
6013.00†	22.642	102.034	5676.95	36.76	-365.56	1714.79	39°56'35.939"N	104°42'04.552"W	0.00	
6113.00†	22.642	102.034	5769.24	37.57	-373.59	1752.44	39°56'35.859"N	104°42'04.068"W	0.00	
6213.00†	22.642	102.034	5861.54	38.38	-381.62	1790.10	39°56'35.780"N	104°42'03.585"W	0.00	
6313.00†	22.642	102.034	5953.83	39.19	-389.64	1827.75	39°56'35.701"N	104°42'03.102"W	0.00	
6413.00†	22.642	102.034	6046.12	39.99	-397.67	1865.40	39°56'35.621"N	104°42'02.618"W	0.00	
6513.00†	22.642	102.034	6138.41	40.80	-405.70	1903.05	39°56'35.542"N	104°42'02.135"W	0.00	
6613.00†	22.642	102.034	6230.71	41.61	-413.72	1940.70	39°56'35.463"N	104°42'01.651"W	0.00	
6713.00†	22.642	102.034	6323.00	42.42	-421.75	1978.35	39°56'35.383"N	104°42'01.168"W	0.00	
6813.00†	22.642	102.034	6415.29	43.22	-429.78	2016.00	39°56'35.304"N	104°42'00.685"W	0.00	
6913.00†	22.642	102.034	6507.59	44.03	-437.80	2053.65	39°56'35.225"N	104°42'00.201"W	0.00	
7013.00†	22.642	102.034	6599.88	44.84	-445.83	2091.30	39°56'35.145"N	104°41'59.718"W	0.00	
7113.00†	22.642	102.034	6692.17	45.64	-453.86	2128.95	39°56'35.066"N	104°41'59.234"W	0.00	
7213.00†	22.642	102.034	6784.46	46.45	-461.88	2166.61	39°56'34.987"N	104°41'58.751"W	0.00	
7221.62	22.642	102.034	6792.42	46.52	-462.57	2169.85	39°56'34.980"N	104°41'58.709"W	0.00	End of Tangent
7313.00†	22.572	78.116	6876.96	54.35	-462.63	2204.29	39°56'34.979"N	104°41'58.267"W	10.00	
7413.00†	26.224	55.396	6968.21	78.94	-446.09	2241.35	39°56'35.143"N	104°41'57.791"W	10.00	
7513.00†	32.490	39.375	7055.46	119.53	-412.70	2276.66	39°56'35.473"N	104°41'57.338"W	10.00	
7613.00†	40.158	28.474	7136.06	174.89	-363.47	2309.16	39°56'35.959"N	104°41'56.921"W	10.00	
7691.42†	46.704	22.178	7193.00	227.56	-314.74	2332.02	39°56'36.441"N	104°41'56.627"W	10.00	NIOBRARA A CHALK
7713.00†	48.560	20.686	7207.54	243.34	-299.89	2337.84	39°56'36.587"N	104°41'56.552"W	10.00	
7725.92†	49.680	19.834	7216.00	253.04	-290.73	2341.23	39°56'36.678"N	104°41'56.509"W	10.00	NIOBRARA A MARL
7813.00†	57.364	14.730	7267.75	322.80	-223.91	2361.85	39°56'37.338"N	104°41'56.244"W	10.00	
7913.00†	66.399	9.860	7314.85	410.86	-137.83	2380.45	39°56'38.189"N	104°41'56.005"W	10.00	
8013.00†	75.566	5.627	7347.42	504.83	-44.26	2393.08	39°56'39.113"N	104°41'55.843"W	10.00	
8113.00†	84.802	1.732	7364.45	601.86	53.95	2399.35	39°56'40.084"N	104°41'55.762"W	10.00	



# Planned Wellpath Report

CONNER 19-18-4NBH PWP (REV-A.0)

Page 5 of 10



## REFERENCE WELLPATH IDENTIFICATION

Operator	PETROSHARE	Slot	SLOT#16 CONNER 19-18-4NBH (350'FSL & 2020'FWL, SEC.19)
Area	COLORADO	Well	CONNER 19-18-4NBH
Field	ADAMS COUNTY (NAD83/ TRUE NORTH)	Wellbore	CONNER 19-18-4NBH PWB
Facility	SEC.19-T01S-R65W		

## WELLPATH DATA (191 stations) † = interpolated/extrapolated station

MD [ft]	Inclination [°]	Azimuth [°]	TVD [ft]	Vert Sect [ft]	North [ft]	East [ft]	Latitude	Longitude	DLS [°/100ft]	Comments
8169.14	90.000	359.609	7367.00 <sup>†</sup>	656.58	110.00	2400.00	39°56'40.638"N	104°41'55.754"W	10.00	End of 3D Arc
8213.00 <sup>†</sup>	90.000	359.609	7367.00	699.21	153.86	2399.70	39°56'41.071"N	104°41'55.758"W	0.00	
8313.00 <sup>†</sup>	90.000	359.609	7367.00	796.39	253.86	2399.02	39°56'42.060"N	104°41'55.766"W	0.00	
8413.00 <sup>†</sup>	90.000	359.609	7367.00	893.58	353.86	2398.33	39°56'43.048"N	104°41'55.775"W	0.00	
8513.00 <sup>†</sup>	90.000	359.609	7367.00	990.76	453.85	2397.65	39°56'44.036"N	104°41'55.783"W	0.00	
8613.00 <sup>†</sup>	90.000	359.609	7367.00	1087.95	553.85	2396.97	39°56'45.024"N	104°41'55.792"W	0.00	
8713.00 <sup>†</sup>	90.000	359.609	7367.00	1185.13	653.85	2396.29	39°56'46.012"N	104°41'55.801"W	0.00	
8813.00 <sup>†</sup>	90.000	359.609	7367.00	1282.32	753.85	2395.60	39°56'47.001"N	104°41'55.809"W	0.00	
8913.00 <sup>†</sup>	90.000	359.609	7367.00	1379.50	853.84	2394.92	39°56'47.989"N	104°41'55.818"W	0.00	
9013.00 <sup>†</sup>	90.000	359.609	7367.00	1476.69	953.84	2394.24	39°56'48.977"N	104°41'55.827"W	0.00	
9113.00 <sup>†</sup>	90.000	359.609	7367.00	1573.87	1053.84	2393.55	39°56'49.965"N	104°41'55.835"W	0.00	
9213.00 <sup>†</sup>	90.000	359.609	7367.00	1671.06	1153.84	2392.87	39°56'50.954"N	104°41'55.844"W	0.00	
9313.00 <sup>†</sup>	90.000	359.609	7367.00	1768.24	1253.83	2392.19	39°56'51.942"N	104°41'55.853"W	0.00	
9413.00 <sup>†</sup>	90.000	359.609	7367.00	1865.43	1353.83	2391.50	39°56'52.930"N	104°41'55.861"W	0.00	
9513.00 <sup>†</sup>	90.000	359.609	7367.00	1962.61	1453.83	2390.82	39°56'53.918"N	104°41'55.870"W	0.00	
9613.00 <sup>†</sup>	90.000	359.609	7367.00	2059.80	1553.83	2390.14	39°56'54.906"N	104°41'55.879"W	0.00	
9713.00 <sup>†</sup>	90.000	359.609	7367.00	2156.98	1653.83	2389.45	39°56'55.895"N	104°41'55.887"W	0.00	
9813.00 <sup>†</sup>	90.000	359.609	7367.00	2254.17	1753.82	2388.77	39°56'56.883"N	104°41'55.896"W	0.00	
9913.00 <sup>†</sup>	90.000	359.609	7367.00	2351.35	1853.82	2388.09	39°56'57.871"N	104°41'55.905"W	0.00	
10013.00 <sup>†</sup>	90.000	359.609	7367.00	2448.54	1953.82	2387.41	39°56'58.859"N	104°41'55.913"W	0.00	
10113.00 <sup>†</sup>	90.000	359.609	7367.00	2545.72	2053.82	2386.72	39°56'59.848"N	104°41'55.922"W	0.00	
10213.00 <sup>†</sup>	90.000	359.609	7367.00	2642.91	2153.81	2386.04	39°57'00.836"N	104°41'55.930"W	0.00	
10313.00 <sup>†</sup>	90.000	359.609	7367.00	2740.09	2253.81	2385.36	39°57'01.824"N	104°41'55.939"W	0.00	
10413.00 <sup>†</sup>	90.000	359.609	7367.00	2837.28	2353.81	2384.67	39°57'02.812"N	104°41'55.948"W	0.00	
10513.00 <sup>†</sup>	90.000	359.609	7367.00	2934.46	2453.81	2383.99	39°57'03.800"N	104°41'55.956"W	0.00	
10613.00 <sup>†</sup>	90.000	359.609	7367.00	3031.64	2553.80	2383.31	39°57'04.789"N	104°41'55.965"W	0.00	
10713.00 <sup>†</sup>	90.000	359.609	7367.00	3128.83	2653.80	2382.62	39°57'05.777"N	104°41'55.974"W	0.00	
10813.00 <sup>†</sup>	90.000	359.609	7367.00	3226.01	2753.80	2381.94	39°57'06.765"N	104°41'55.982"W	0.00	
10913.00 <sup>†</sup>	90.000	359.609	7367.00	3323.20	2853.80	2381.26	39°57'07.753"N	104°41'55.991"W	0.00	
11013.00 <sup>†</sup>	90.000	359.609	7367.00	3420.38	2953.79	2380.58	39°57'08.741"N	104°41'56.000"W	0.00	





# Planned Wellpath Report

CONNER 19-18-4NBH PWP (REV-A.0)

Page 6 of 10



## REFERENCE WELLPATH IDENTIFICATION

Operator	PETROSHARE	Slot	SLOT#16 CONNER 19-18-4NBH (350'FSL & 2020'FWL, SEC.19)
Area	COLORADO	Well	CONNER 19-18-4NBH
Field	ADAMS COUNTY (NAD83/ TRUE NORTH)	Wellbore	CONNER 19-18-4NBH PWB
Facility	SEC.19-T01S-R65W		

## WELLPATH DATA (191 stations) † = interpolated/extrapolated station

MD [ft]	Inclination [°]	Azimuth [°]	TVD [ft]	Vert Sect [ft]	North [ft]	East [ft]	Latitude	Longitude	DLS [°/100ft]	Comments
11113.00†	90.000	359.609	7367.00	3517.57	3053.79	2379.89	39°57'09.730"N	104°41'56.008"W	0.00	
11213.00†	90.000	359.609	7367.00	3614.75	3153.79	2379.21	39°57'10.718"N	104°41'56.017"W	0.00	
11313.00†	90.000	359.609	7367.00	3711.94	3253.79	2378.53	39°57'11.706"N	104°41'56.026"W	0.00	
11413.00†	90.000	359.609	7367.00	3809.12	3353.79	2377.84	39°57'12.694"N	104°41'56.034"W	0.00	
11513.00†	90.000	359.609	7367.00	3906.31	3453.78	2377.16	39°57'13.683"N	104°41'56.043"W	0.00	
11613.00†	90.000	359.609	7367.00	4003.49	3553.78	2376.48	39°57'14.671"N	104°41'56.052"W	0.00	
11713.00†	90.000	359.609	7367.00	4100.68	3653.78	2375.79	39°57'15.659"N	104°41'56.060"W	0.00	
11813.00†	90.000	359.609	7367.00	4197.86	3753.78	2375.11	39°57'16.647"N	104°41'56.069"W	0.00	
11913.00†	90.000	359.609	7367.00	4295.05	3853.77	2374.43	39°57'17.635"N	104°41'56.077"W	0.00	
12013.00†	90.000	359.609	7367.00	4392.23	3953.77	2373.75	39°57'18.624"N	104°41'56.086"W	0.00	
12113.00†	90.000	359.609	7367.00	4489.42	4053.77	2373.06	39°57'19.612"N	104°41'56.095"W	0.00	
12213.00†	90.000	359.609	7367.00	4586.60	4153.77	2372.38	39°57'20.600"N	104°41'56.103"W	0.00	
12313.00†	90.000	359.609	7367.00	4683.79	4253.76	2371.70	39°57'21.588"N	104°41'56.112"W	0.00	
12413.00†	90.000	359.609	7367.00	4780.97	4353.76	2371.01	39°57'22.577"N	104°41'56.121"W	0.00	
12513.00†	90.000	359.609	7367.00	4878.16	4453.76	2370.33	39°57'23.565"N	104°41'56.129"W	0.00	
12613.00†	90.000	359.609	7367.00	4975.34	4553.76	2369.65	39°57'24.553"N	104°41'56.138"W	0.00	
12713.00†	90.000	359.609	7367.00	5072.53	4653.76	2368.96	39°57'25.541"N	104°41'56.147"W	0.00	
12813.00†	90.000	359.609	7367.00	5169.71	4753.75	2368.28	39°57'26.529"N	104°41'56.155"W	0.00	
12913.00†	90.000	359.609	7367.00	5266.90	4853.75	2367.60	39°57'27.518"N	104°41'56.164"W	0.00	
13013.00†	90.000	359.609	7367.00	5364.08	4953.75	2366.91	39°57'28.506"N	104°41'56.173"W	0.00	
13113.00†	90.000	359.609	7367.00	5461.27	5053.75	2366.23	39°57'29.494"N	104°41'56.181"W	0.00	
13213.00†	90.000	359.609	7367.00	5558.45	5153.74	2365.55	39°57'30.482"N	104°41'56.190"W	0.00	
13313.00†	90.000	359.609	7367.00	5655.64	5253.74	2364.87	39°57'31.471"N	104°41'56.199"W	0.00	
13413.00†	90.000	359.609	7367.00	5752.82	5353.74	2364.18	39°57'32.459"N	104°41'56.207"W	0.00	
13513.00†	90.000	359.609	7367.00	5850.01	5453.74	2363.50	39°57'33.447"N	104°41'56.216"W	0.00	
13613.00†	90.000	359.609	7367.00	5947.19	5553.73	2362.82	39°57'34.435"N	104°41'56.225"W	0.00	
13713.00†	90.000	359.609	7367.00	6044.38	5653.73	2362.13	39°57'35.423"N	104°41'56.233"W	0.00	
13813.00†	90.000	359.609	7367.00	6141.56	5753.73	2361.45	39°57'36.412"N	104°41'56.242"W	0.00	
13913.00†	90.000	359.609	7367.00	6238.75	5853.73	2360.77	39°57'37.400"N	104°41'56.250"W	0.00	
14013.00†	90.000	359.609	7367.00	6335.93	5953.72	2360.08	39°57'38.388"N	104°41'56.259"W	0.00	



# Planned Wellpath Report

CONNER 19-18-4NBH PWP (REV-A.0)

Page 7 of 10



## REFERENCE WELLPATH IDENTIFICATION

Operator	PETROSHARE	Slot	SLOT#16 CONNER 19-18-4NBH (350'FSL & 2020'FWL, SEC.19)
Area	COLORADO	Well	CONNER 19-18-4NBH
Field	ADAMS COUNTY (NAD83/ TRUE NORTH)	Wellbore	CONNER 19-18-4NBH PWB
Facility	SEC.19-T01S-R65W		

## WELLPATH DATA (191 stations) † = interpolated/extrapolated station

MD [ft]	Inclination [°]	Azimuth [°]	TVD [ft]	Vert Sect [ft]	North [ft]	East [ft]	Latitude	Longitude	DLS [°/100ft]	Comments
14113.00†	90.000	359.609	7367.00	6433.12	6053.72	2359.40	39°57'39.376"N	104°41'56.268"W	0.00	
14213.00†	90.000	359.609	7367.00	6530.30	6153.72	2358.72	39°57'40.364"N	104°41'56.276"W	0.00	
14313.00†	90.000	359.609	7367.00	6627.49	6253.72	2358.04	39°57'41.353"N	104°41'56.285"W	0.00	
14413.00†	90.000	359.609	7367.00	6724.67	6353.72	2357.35	39°57'42.341"N	104°41'56.294"W	0.00	
14513.00†	90.000	359.609	7367.00	6821.86	6453.71	2356.67	39°57'43.329"N	104°41'56.302"W	0.00	
14613.00†	90.000	359.609	7367.00	6919.04	6553.71	2355.99	39°57'44.317"N	104°41'56.311"W	0.00	
14713.00†	90.000	359.609	7367.00	7016.23	6653.71	2355.30	39°57'45.306"N	104°41'56.320"W	0.00	
14813.00†	90.000	359.609	7367.00	7113.41	6753.71	2354.62	39°57'46.294"N	104°41'56.328"W	0.00	
14913.00†	90.000	359.609	7367.00	7210.60	6853.70	2353.94	39°57'47.282"N	104°41'56.337"W	0.00	
15013.00†	90.000	359.609	7367.00	7307.78	6953.70	2353.25	39°57'48.270"N	104°41'56.346"W	0.00	
15113.00†	90.000	359.609	7367.00	7404.97	7053.70	2352.57	39°57'49.258"N	104°41'56.354"W	0.00	
15213.00†	90.000	359.609	7367.00	7502.15	7153.70	2351.89	39°57'50.247"N	104°41'56.363"W	0.00	
15313.00†	90.000	359.609	7367.00	7599.34	7253.69	2351.20	39°57'51.235"N	104°41'56.372"W	0.00	
15413.00†	90.000	359.609	7367.00	7696.52	7353.69	2350.52	39°57'52.223"N	104°41'56.380"W	0.00	
15513.00†	90.000	359.609	7367.00	7793.71	7453.69	2349.84	39°57'53.211"N	104°41'56.389"W	0.00	
15613.00†	90.000	359.609	7367.00	7890.89	7553.69	2349.16	39°57'54.200"N	104°41'56.398"W	0.00	
15713.00†	90.000	359.609	7367.00	7988.08	7653.69	2348.47	39°57'55.188"N	104°41'56.406"W	0.00	
15813.00†	90.000	359.609	7367.00	8085.26	7753.68	2347.79	39°57'56.176"N	104°41'56.415"W	0.00	
15913.00†	90.000	359.609	7367.00	8182.45	7853.68	2347.11	39°57'57.164"N	104°41'56.423"W	0.00	
16013.00†	90.000	359.609	7367.00	8279.63	7953.68	2346.42	39°57'58.152"N	104°41'56.432"W	0.00	
16113.00†	90.000	359.609	7367.00	8376.82	8053.68	2345.74	39°57'59.141"N	104°41'56.441"W	0.00	
16213.00†	90.000	359.609	7367.00	8474.00	8153.67	2345.06	39°58'00.129"N	104°41'56.449"W	0.00	
16313.00†	90.000	359.609	7367.00	8571.19	8253.67	2344.37	39°58'01.117"N	104°41'56.458"W	0.00	
16413.00†	90.000	359.609	7367.00	8668.37	8353.67	2343.69	39°58'02.105"N	104°41'56.467"W	0.00	
16513.00†	90.000	359.609	7367.00	8765.56	8453.67	2343.01	39°58'03.093"N	104°41'56.475"W	0.00	
16613.00†	90.000	359.609	7367.00	8862.74	8553.66	2342.33	39°58'04.082"N	104°41'56.484"W	0.00	
16713.00†	90.000	359.609	7367.00	8959.93	8653.66	2341.64	39°58'05.070"N	104°41'56.493"W	0.00	
16813.00†	90.000	359.609	7367.00	9057.11	8753.66	2340.96	39°58'06.058"N	104°41'56.501"W	0.00	
16913.00†	90.000	359.609	7367.00	9154.30	8853.66	2340.28	39°58'07.046"N	104°41'56.510"W	0.00	
17013.00†	90.000	359.609	7367.00	9251.48	8953.65	2339.59	39°58'08.035"N	104°41'56.519"W	0.00	





# Planned Wellpath Report

CONNER 19-18-4NBH PWP (REV-A.0)

Page 8 of 10



## REFERENCE WELLPATH IDENTIFICATION

Operator	PETROSHARE	Slot	SLOT#16 CONNER 19-18-4NBH (350'FSL & 2020'FWL, SEC.19)
Area	COLORADO	Well	CONNER 19-18-4NBH
Field	ADAMS COUNTY (NAD83/ TRUE NORTH)	Wellbore	CONNER 19-18-4NBH PWB
Facility	SEC.19-T01S-R65W		

## WELLPATH DATA (191 stations) † = interpolated/extrapolated station

MD [ft]	Inclination [°]	Azimuth [°]	TVD [ft]	Vert Sect [ft]	North [ft]	East [ft]	Latitude	Longitude	DLS [°/100ft]	Comments
17113.00†	90.000	359.609	7367.00	9348.67	9053.65	2338.91	39°58'09.023"N	104°41'56.527"W	0.00	
17213.00†	90.000	359.609	7367.00	9445.85	9153.65	2338.23	39°58'10.011"N	104°41'56.536"W	0.00	
17313.00†	90.000	359.609	7367.00	9543.04	9253.65	2337.54	39°58'10.999"N	104°41'56.545"W	0.00	
17413.00†	90.000	359.609	7367.00	9640.22	9353.65	2336.86	39°58'11.987"N	104°41'56.553"W	0.00	
17513.00†	90.000	359.609	7367.00	9737.41	9453.64	2336.18	39°58'12.976"N	104°41'56.562"W	0.00	
17613.00†	90.000	359.609	7367.00	9834.59	9553.64	2335.50	39°58'13.964"N	104°41'56.571"W	0.00	
17713.00†	90.000	359.609	7367.00	9931.78	9653.64	2334.81	39°58'14.952"N	104°41'56.579"W	0.00	
17773.55†	90.000	359.609	7367.00	9990.62	9714.19	2334.40	39°58'15.550"N	104°41'56.584"W	0.00	NIOBRARA B CHALK/LANDING ZONE
17813.00†	90.000	359.609	7367.00	10028.96	9753.64	2334.13	39°58'15.940"N	104°41'56.588"W	0.00	
17913.00†	90.000	359.609	7367.00	10126.15	9853.63	2333.45	39°58'16.929"N	104°41'56.597"W	0.00	
17978.29	90.000	359.609	7367.00 <sup>2</sup>	10189.59	9918.92	2333.00	39°58'17.574"N	104°41'56.602"W	0.00	End of Tangent

## HOLE & CASING SECTIONS

- Ref Wellbore: CONNER 19-18-4NBH PWB Ref Wellpath: CONNER 19-18-4NBH PWP (REV-A.0)

String/Diameter	Start MD [ft]	End MD [ft]	Interval [ft]	Start TVD [ft]	End TVD [ft]	Start N/S [ft]	Start E/W [ft]	End N/S [ft]	End E/W [ft]
9.625in Casing Surface	13.00	700.00	687.00	13.00	700.00	0.00	0.00	0.00	0.00
8.5in Open Hole	700.00	17978.29	17278.29	700.00	7367.00	0.00	0.00	9918.92	2333.00



# Planned Wellpath Report

CONNER 19-18-4NBH PWP (REV-A.0)

Page 9 of 10



## REFERENCE WELLPATH IDENTIFICATION

Operator	PETROSHARE	Slot	SLOT#16 CONNER 19-18-4NBH (350'FSL & 2020'FWL, SEC.19)
Area	COLORADO	Well	CONNER 19-18-4NBH
Field	ADAMS COUNTY (NAD83/ TRUE NORTH)	Wellbore	CONNER 19-18-4NBH PWB
Facility	SEC.19-T01S-R65W		

## TARGETS

Name	MD [ft]	TVD [ft]	North [ft]	East [ft]	Grid East [US ft]	Grid North [US ft]	Latitude	Longitude	Shape
SEC.18-T01S-R65W		0.00	0.00	-224.31	3222009.38	1223555.33	39°56'39.552"N	104°42'29.448"W	polygon
SEC.19-T01S-R65W		0.00	0.00	-224.31	3222009.38	1223555.33	39°56'39.552"N	104°42'29.448"W	polygon
CONNER 19-18-4NBH BHL (460'FNL & 460'FEL, SEC.18)		7367.00	9813.92	2373.97	3224519.76	1233391.78	39°58'16.536"N	104°41'56.076"W	point
2) CONNER 19-18-4NBH BHL REV-1(355'FNL & 460'FEL, SEC.18)	17978.29	7367.00	9918.92	2333.00	3224477.85	1233496.40	39°58'17.574"N	104°41'56.602"W	point
CONNER 19-18-4NBH LP (460'FSL & 460'FEL. SEC.19)		7367.00	7.40	2414.17	3224647.61	1223586.32	39°56'39.624"N	104°41'55.572"W	point
1) CONNER 19-18-4NBH LP REV-1 (460'FSL & 460'FEL. SEC.19)	8169.14	7367.00	110.00	2400.00	3224632.52	1223688.78	39°56'40.638"N	104°41'55.754"W	point
SEC.18-T01S-R65W (460' SETBACK)		7660.00	0.00	-224.31	3222009.38	1223555.33	39°56'39.552"N	104°42'29.448"W	polygon
SEC.19-T01S-R65W (460' SETBACK)		7660.00	0.00	-224.31	3222009.38	1223555.33	39°56'39.552"N	104°42'29.448"W	polygon

## SURVEY PROGRAM -

Ref Wellbore: CONNER 19-18-4NBH PWB Ref Wellpath: CONNER 19-18-4NBH PWP (REV-A.0)

Start MD [ft]	End MD [ft]	Positional Uncertainty Model	Log Name/Comment	Wellbore
13.00	700.00	Custom BHI NaviTrak (Standard Rotating+Axial Corr) (Rockies 0.03Gt model)		CONNER 19-18-4NBH PWB
700.00	17984.08	Custom BHI AutoTrak Curve (Axial Corr, Short spacing) (Rockies 0.03Gt model)		CONNER 19-18-4NBH PWB



# Planned Wellpath Report

CONNER 19-18-4NBH PWP (REV-A.0)

Page 10 of 10



## REFERENCE WELLPATH IDENTIFICATION

Operator	PETROSHARE	Slot	SLOT#16 CONNER 19-18-4NBH (350'FSL & 2020'FWL, SEC.19)
Area	COLORADO	Well	CONNER 19-18-4NBH
Field	ADAMS COUNTY (NAD83/ TRUE NORTH)	Wellbore	CONNER 19-18-4NBH PWB
Facility	SEC.19-T01S-R65W		

## WELLPATH COMMENTS

MD [ft]	Inclination [°]	Azimuth [°]	TVD [ft]	Comment
700.00	0.000	102.034	700.00	FOX HILLS
5127.83	22.642	102.034	4860.00	SUSSEX/SHANNON
7691.42	46.704	22.178	7193.00	NIOBRARA A CHALK
7725.92	49.680	19.834	7216.00	NIOBRARA A MARL
17773.55	90.000	359.609	7367.00	NIOBRARA B CHALK/LANDING ZONE

## DESIGN COMMENTS

MD [ft]	Inclination [°]	Azimuth [°]	TVD [ft]	Comment
13.00	0.000	102.034	13.00	Tie On
900.00	0.000	102.034	900.00	End of Tangent
2032.10	22.642	102.034	2002.86	End of Build
7221.62	22.642	102.034	6792.42	End of Tangent
8169.14	90.000	359.609	7367.00	End of 3D Arc
17978.29	90.000	359.609	7367.00	End of Tangent