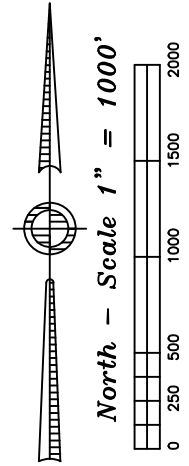
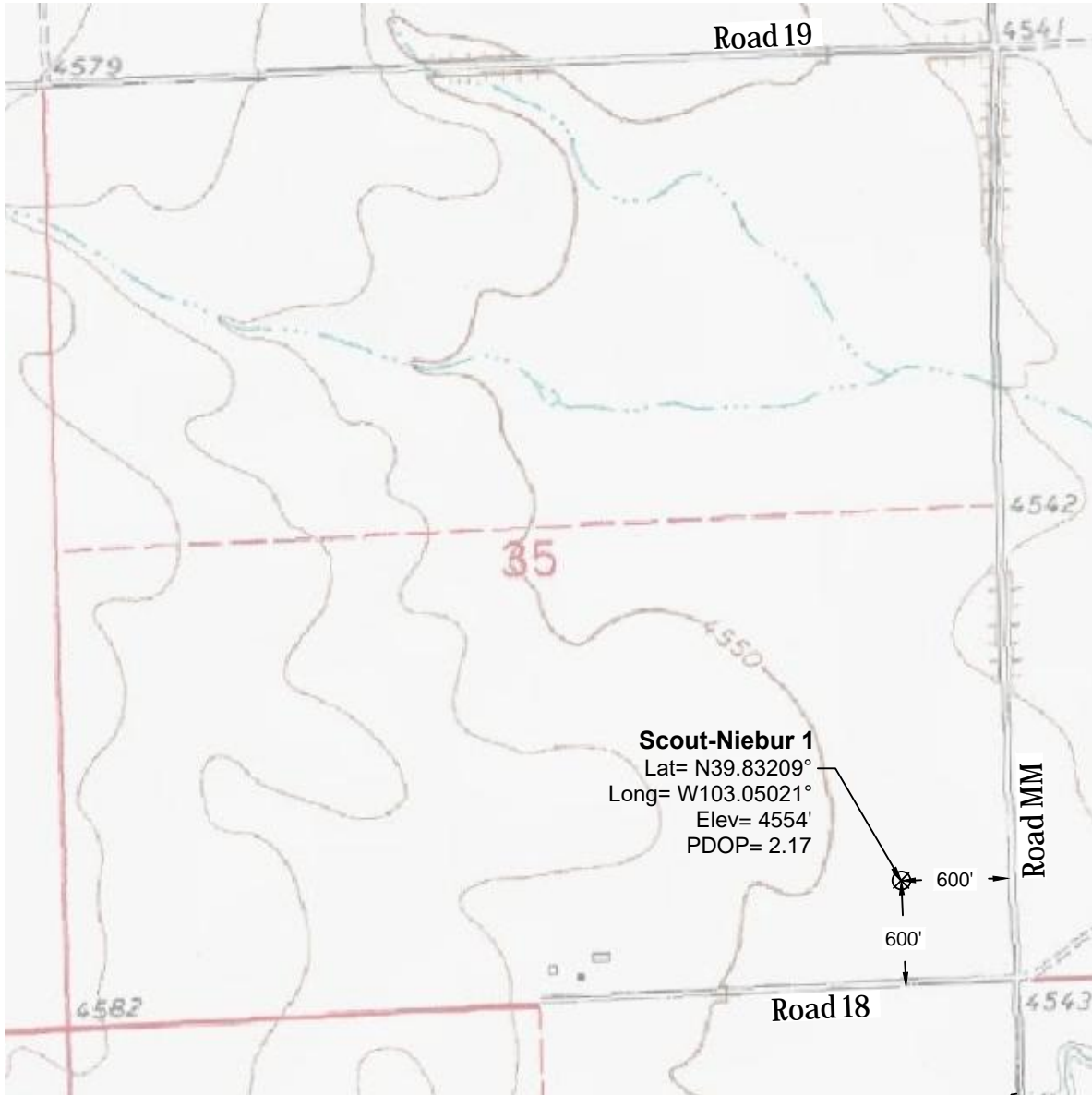


Topographic Exhibit



Notes:

- In accordance with a request from IPT, PLS Group has determined the location of the Scout_Niebur 1 well to be 600' FEL and 600' FSL as measured perpendicular to the section lines.
- Survey elevations based on NAVD 88 Datum using GPS observed heights and Geoid 9 corrections.
- Distances shown are in SPC grid feet. Ground scale factor= 1.000231459810.
- There are no improvements within 100' of the proposed well site.
- Apparent Land Use is cropland.
- Vegetation is millet.
- Topographic map contours and spot elevations based on NGVD 1929 Datum.
- Topographic map dated 1978.

P:\Project\2013\13062\dwg\13062d002 Topo.dwg August 28, 2017 - 8:21am

Well Name: Scout-Niebur 1	Field Date 8.24.2017	Prepared for: St. Croix Operating Inc.
Section 35-T2S-R51W-6th PM, SE-SE	Party Chief CH	PLS Group 6843 North Franklin Avenue Loveland, Colorado 80538 970.669.2100 office - 970.669.3652 fax
Washington County, Colorado	Proj. Manager ZNB	
	Drawing Date 8.25.2017	