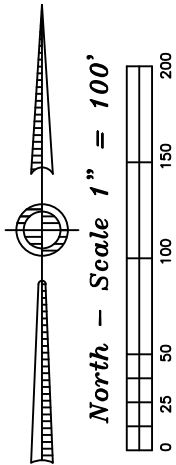
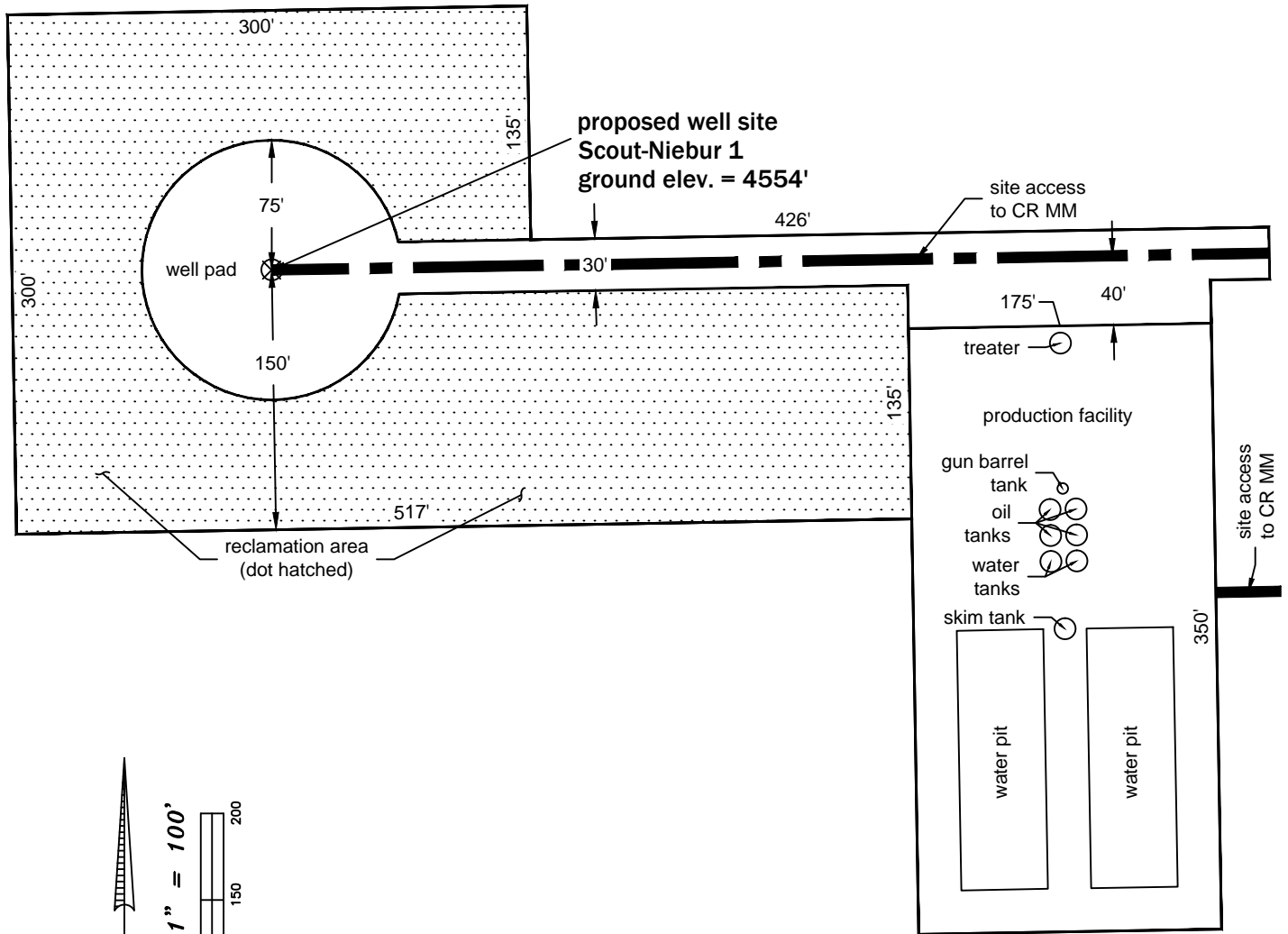


Layout Diagram



Size of disturbed area during construction in acres: 4.5 acres
 Size of location after interim reclamation in acres: 2.3 acres
 Estimated location ground elevation: 4554' [NAVD88]

P:\Project\2013\13062\dwg\13062d002 Lay.dwg August 25, 2017 - 3:16pm

Well Name: Scout-Niebur 1	Field Date 8.24.2017	Prepared for: St. Croix Operating Inc.	Project#: 13062.002
Section 35-T2S-R51W-6th PM, SE-SE	Party Chief CH	PLS Group 6843 North Franklin Avenue Loveland, Colorado 80538 970.669.2100 office - 970.669.3652 fax	
Washington County, Colorado	Proj. Manager ZNB		
	Drawing Date 8.25.2017		