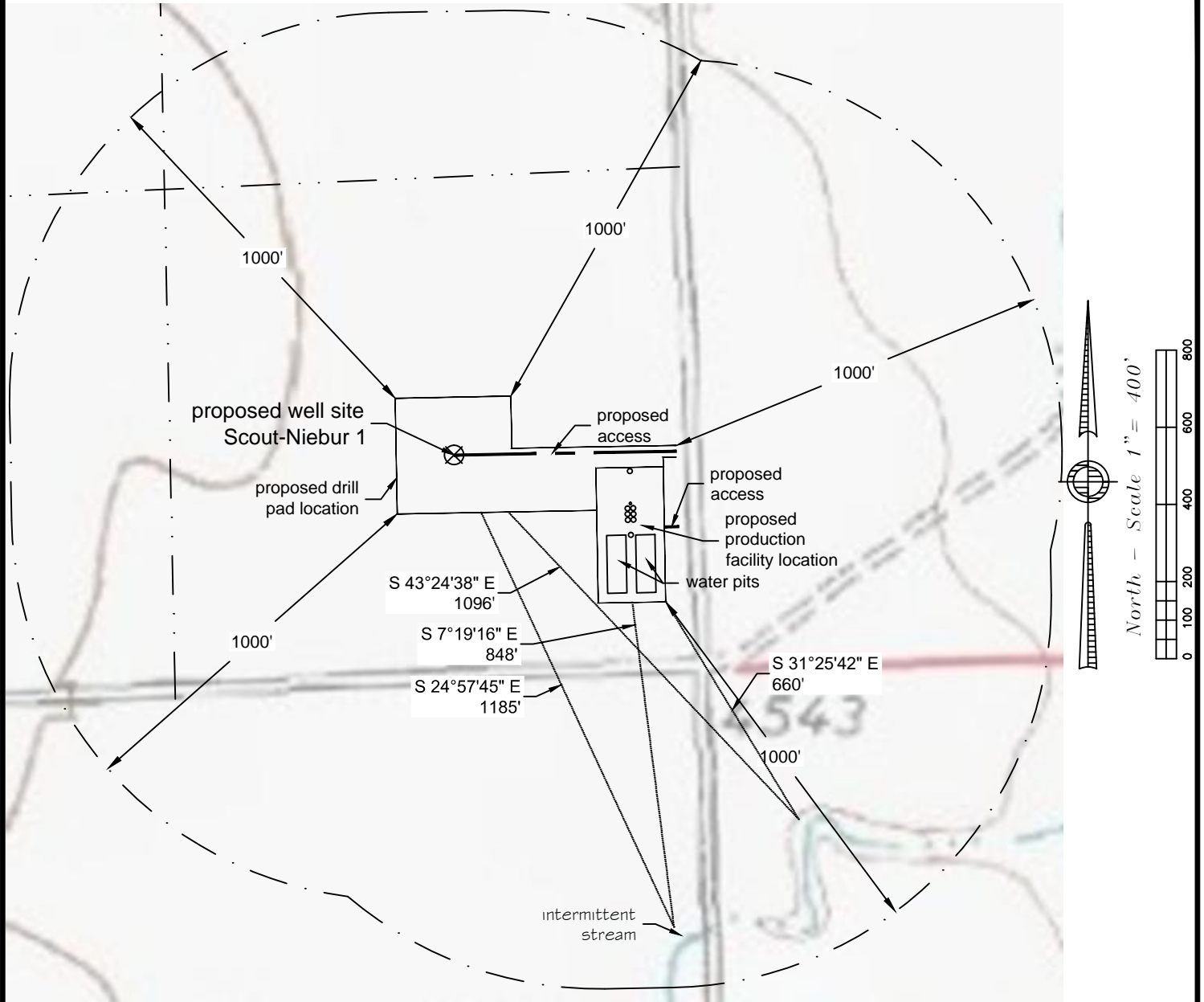


Hydrology Map (1000')



Distance from SE Corner of SE Pit to nearest Downgradient Surface Water feature of intermittent creek is S 32°09'39" E for a distance of 694 feet.

Distance to nearest water well (Permit #116-G) is approximately 1906' SW, located in the SESW Section 35-T2S-R51W.

P:\Project\2013\13062\dwg\13062d002 Hyd.dwg August 28, 2017 - 9:18am

Well Name: Scout-Niebur 1	Field Date 8.24.2017	Prepared for: St. Croix Operating Inc.	Project#: 13062.002
Section 35-T2S-R51W-6th PM, SE-SE	Party Chief CH	PLS Group 6843 North Franklin Avenue Loveland, Colorado 80538 970.669.2100 office - 970.669.3652 fax	
Washington County, Colorado	Proj. Manager ZNB		
	Drawing Date 8.25.2017		