

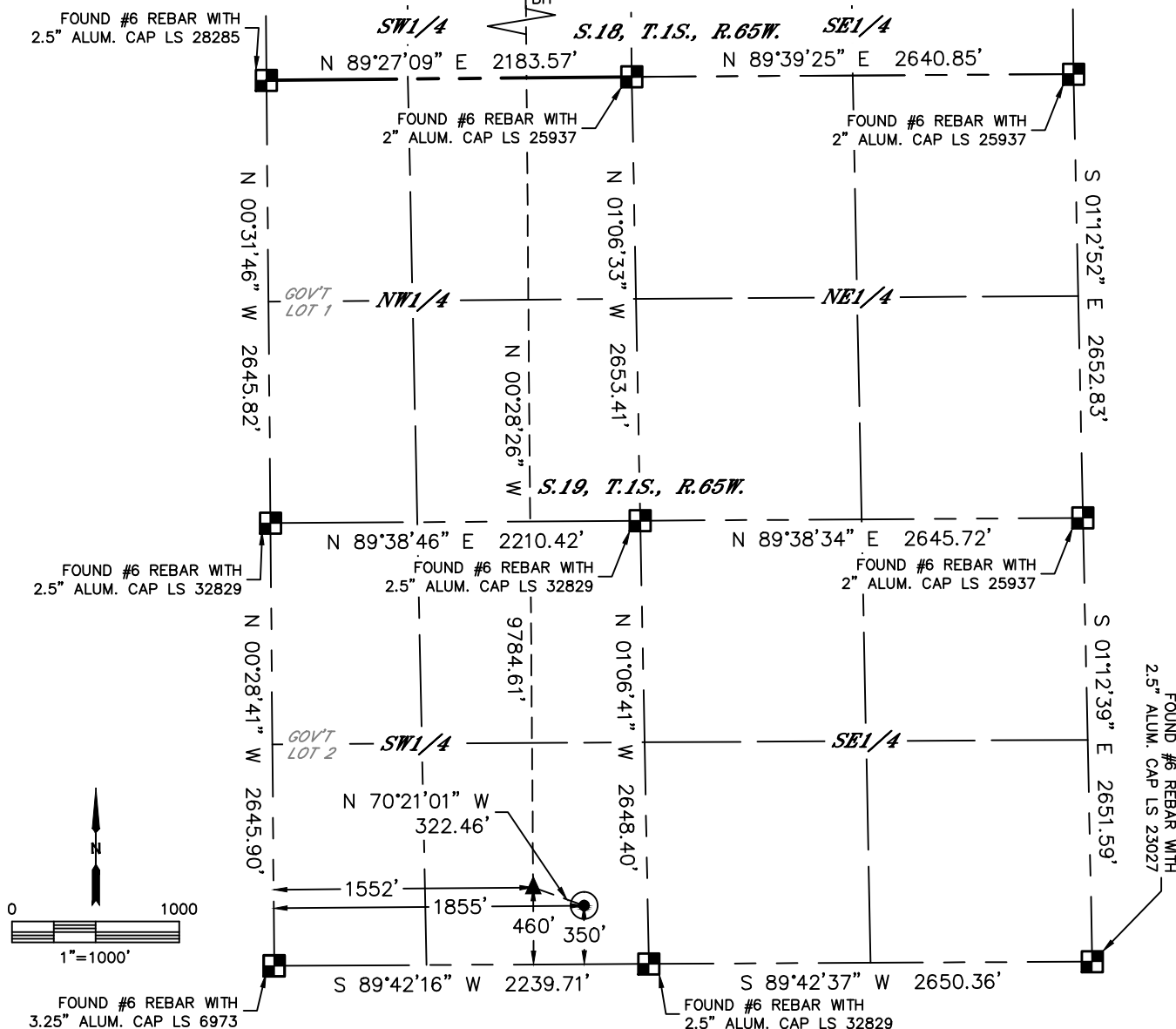


Lat40°, Inc. 6250 W. 10th Street, Unit 2, Greeley, CO 970-515-5294

WELL LOCATION CERTIFICATE

CONNER 19-18-2CDH

SECTION: 19
TOWNSHIP: 1S
RANGE: 65W
6TH. P.M.
ADAMS COUNTY, CO



LEGEND

- = ALIQUOT MONUMENT AS DESCRIBED
- = CALCULATED POSITION
- = SURFACE HOLE LOCATION (SHL)
- ▲ = ENTRY POINT LOCATION (EP)
- ◆ = FIRST PERF. POINT (FPP)
- = BOTTOM HOLE LOCATION (BHL)

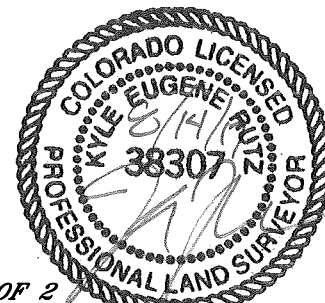
| | | | | | | | | | |
|----------------------------------|-----|------|-----|-----------|------------|------------------------|----------|-----------------------|-----------|
| CLIENT: PETRO SHARE | | | | | | LANDMAN: BILL LLOYD | | | |
| INSTRUMENT OPERATOR: JAKE STILLE | | | | | | SURVEY DATE: 6/27/2017 | | SURFACE USE: CROPLAND | |
| SHL FOOTAGE | | | | SHL LAT ° | SHL LONG ° | SHL PDOP | SHL ELEV | SHL | SHL S-T-R |
| 350 | FSL | 1855 | FWL | 39.94432 | -104.70796 | 1.5 | 5142 | SESW | 19-1S-65 |

| BHL FOOTAGE | | | | BHL LAT ° | BHL LONG ° | BHL S-T-R | EP LAT ° | EP LONG ° | EP S-T-R |
|-------------|-----|------|-----|-----------|------------|-----------|----------|------------|----------|
| 355 | FNL | 1552 | FWL | 39.97148 | -104.70902 | 18-1S-65 | 39.94462 | -104.70904 | 19-1S-65 |

NOTE:

- 1) Bearings shown are Grid Bearings of the Colorado State Plane Coordinate System, North Zone, North American Datum 1983. The lineal dimensions as contained herein are based upon the "U.S. Survey Foot."
- 2) Distances to section lines measured at 90 degrees from said section lines.
- 3) Ground elevations are based on an observed GPS elevation (NAVD 1988 DATUM).
- 4) Latitude and Longitude shown are (NAD 83 DATUM).
- 5) IMPROVEMENTS: See LOCATION DRAWING for all visible improvements within 500' of oil and gas location.
- 6) This map does not represent a boundary survey.

| NEAREST CULTURAL ITEMS | |
|----------------------------------|-----------|
| BUILDING | ±2257' SW |
| BUILDING UNIT | ±2279' SW |
| HIGH OCCUPANCY BUILDING UNIT | 5280'+ |
| DESIGNATED OUTSIDE ACTIVITY AREA | 5280'+ |
| PUBLIC ROAD (EAST 136TH AVENUE) | ±325' S |
| ABOVE GROUND UTILITY | ±693' S |
| RAILROAD | 5280'+ |
| PROPERTY LINE | ±310' S |



SHEET 1 OF 2

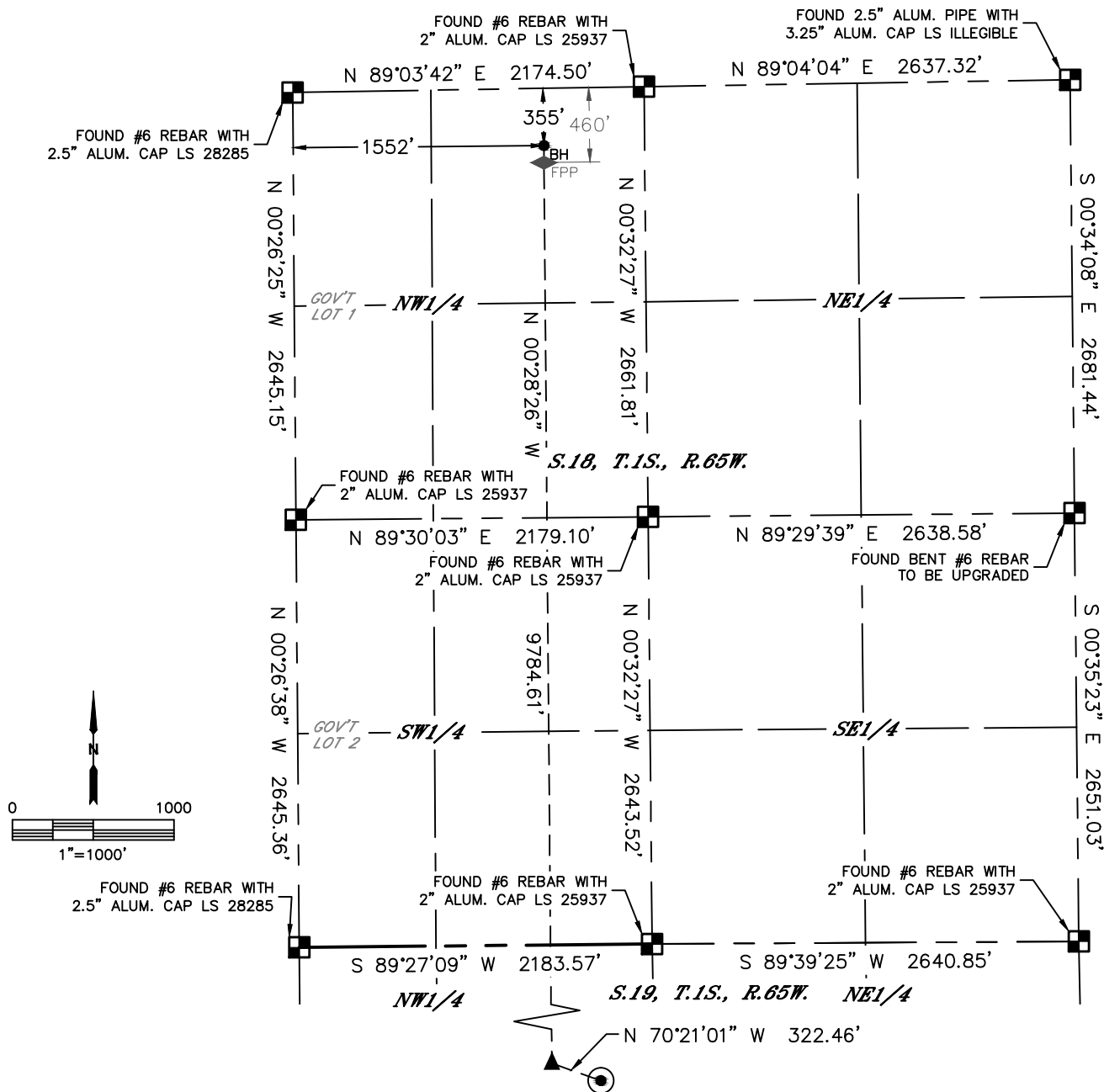
Kyle E. Rutz—On behalf of Lat40°, Inc.
Colorado Licensed Professional Land Surveyor No. 38307
DATE: 8/14/2017
PROJECT#: 2017080

Lat40°, Inc. 6250 W. 10th Street, Unit 2, Greeley, CO 970-515-5294







WELL LOCATION CERTIFICATE

CONNER 19-18-2CDH

SECTION: 19
TOWNSHIP: 1S
RANGE: 65W
6TH. P.M.
ADAMS COUNTY, CO



LEGEND

-  = ALIQUOT MONUMENT AS DESCRIBED
 = CALCULATED POSITION
 = SURFACE HOLE LOCATION (SHL)
 = ENTRY POINT LOCATION (EP)
 = FIRST PERF. POINT (FPP)
 = BOTTOM HOLE LOCATION (BHL)



SHEET 2 OF 2

Kyle E. Rutz—On behalf of Lat40, Inc.
Colorado Licensed Professional Land Surveyor No. 38307
DATE: 8/14/2017
PROJECT#: 2017080