

T3S, R65W, 6th P.M.

ConocoPhillips Company

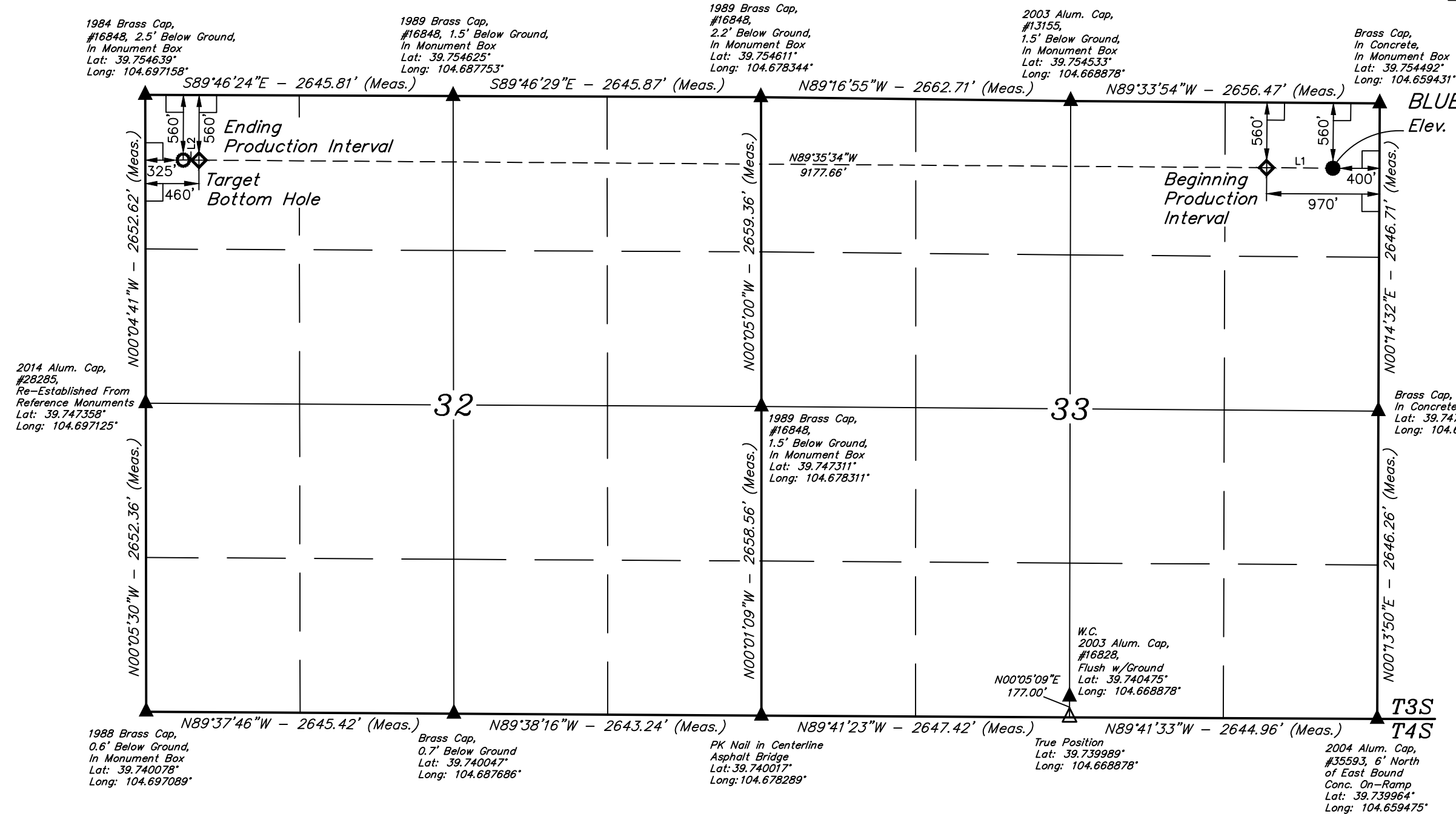
BLUE #3-65 32-33 1H  
NE 1/4 NE 1/4, SECTION 33, T3S, R65W, 6th P.M.  
ADAMS COUNTY, COLORADO

BASIS OF BEARINGS

BASIS OF BEARINGS IS A G.P.S. OBSERVATION

BASIS OF ELEVATION

BENCHMARK 374 LOCATED ON THE SECTION LINE BETWEEN  
SECTIONS 12 & 13, T5S, R64W, 6th. P.M., TAKEN FROM 1988  
PUBLISHED DATUM BY THE UNITED STATES DEPARTMENT OF  
THE INTERIOR, GEOLOGICAL SURVEY AS BEING 6054.61 FEET.



LEGEND:

- 90° SYMBOL
- PROPOSED WELLHEAD.
- TARGET BOTTOM HOLE.
- PRODUCTION INTERVAL.
- SECTION CORNERS LOCATED.

NAD 83 (SURFACE LOCATION)	NAD 83 (BEG. PROD. INTERVAL)	NAD 83 (ENDING PROD. INTERVAL)	NAD 83 (TARGET BOTTOM HOLE)
LATITUDE = 39°45'10.66" (39.752961)	LATITUDE = 39°45'10.69" (39.752969)	LATITUDE = 39°45'11.15" (39.753097)	LATITUDE = 39°45'11.16" (39.753100)
LONGITUDE = 104°39'39.09" (104.660858)	LONGITUDE = 104°39'46.39" (104.662886)	LONGITUDE = 104°41'43.86" (104.695517)	LONGITUDE = 104°41'45.59" (104.695997)
NAD 27 (SURFACE LOCATION)	NAD 27 (BEG. PROD. INTERVAL)	NAD 27 (ENDING PROD. INTERVAL)	NAD 27 (TARGET BOTTOM HOLE)
LATITUDE = 39°45'10.70" (39.752972)	LATITUDE = 39°45'10.74" (39.752983)	LATITUDE = 39°45'11.20" (39.753111)	LATITUDE = 39°45'11.20" (39.753111)
LONGITUDE = 104°39'37.20" (104.660333)	LONGITUDE = 104°39'44.50" (104.662361)	LONGITUDE = 104°41'41.97" (104.694992)	LONGITUDE = 104°41'43.70" (104.695472)
STATE PLANE NAD 83 (CO. NORTH)	STATE PLANE NAD 83 (CO. NORTH)	STATE PLANE NAD 83 (CO. NORTH)	STATE PLANE NAD 83 (CO. NORTH)
N: 1153973.87 E: 3235936.57	N: 1153971.72 E: 3235366.73	N: 1153933.86 E: 3226191.81	N: 1153932.88 E: 3226056.85
STATE PLANE NAD 27 (CO. NORTH)	STATE PLANE NAD 27 (CO. NORTH)	STATE PLANE NAD 27 (CO. NORTH)	STATE PLANE NAD 27 (CO. NORTH)
N: 153977.20 E: 2236089.99	N: 153975.04 E: 2235520.15	N: 153937.05 E: 2226345.32	N: 153936.07 E: 2226210.36



UELS, LLC  
Corporate Office \* 85 South 200 East  
Vernal, UT 84078 \* (435) 789-1017

SURVEYED BY: GREG WEIMER, C.J.	DATE: 05-08-14
DRAWN BY: J.S.	DATE DRAWN: 06-30-14
SCALE: 1" = 1000'	

WELL LOCATION PLAT