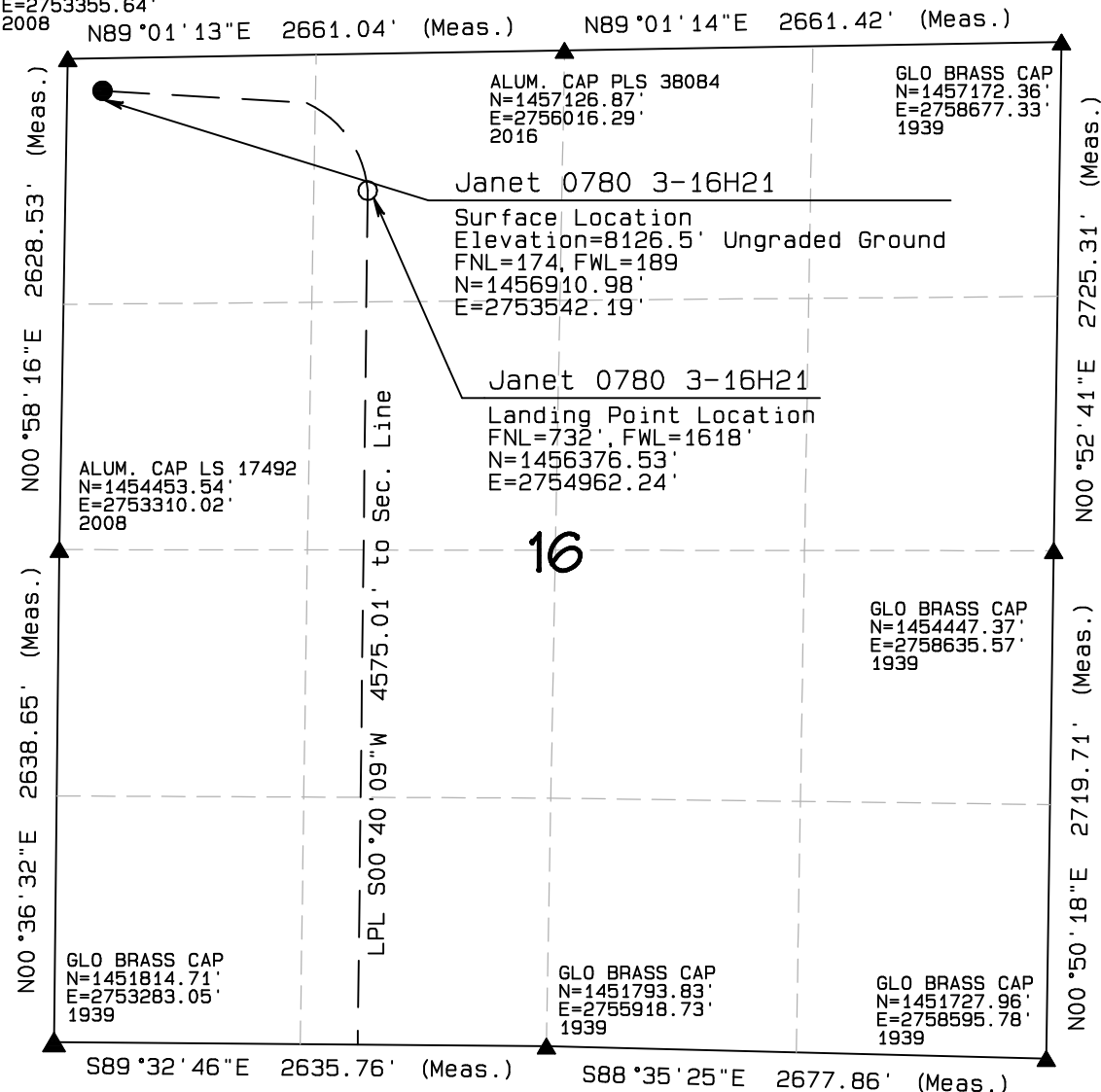


T7N, R80W, 6th P.M.

SandRidge Exploration & Production, LLC

ALUM. CAP LS 17492
N=1457081.37'
E=2753355.64'
2008



Surface & Landing Point Location,
Janet 0780 3-16H21
located as shown in the NW1/4NW1/4 &
NE1/4NW1/4 of
Section 16, T7N, R80W, 6th P.M.,
Jackson County, Colorado.

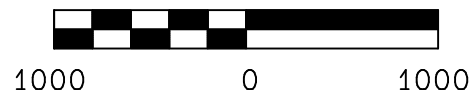
BASIS OF BEARINGS:

US STATE PLANE 1983
CO NORTH 0501 GRID

BASIS OF ELEVATION

NAVD88 Computed using GE0ID12B
as measured using a combination of
Static and Kinematic GPS based on
an OPUS Solution Report.

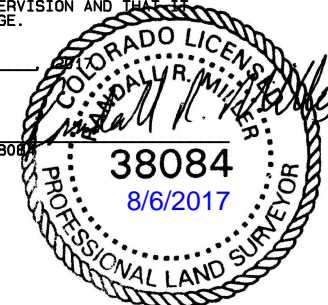
GRAPHIC SCALE 1"=1000'



I RANDALL R. MILLER, BEING A REGISTERED LAND SURVEYOR IN THE
STATE OF COLORADO, DO HEREBY CERTIFY THAT THIS PLAT WAS
MADE BY ME AND/OR UNDER MY DIRECT SUPERVISION AND THAT IT
IS ACCURATE TO THE BEST OF MY KNOWLEDGE.

DATED THIS _____ DAY OF _____

RANDALL R. MILLER, COLORADO PLS NO. 38084



LEGEND

90° SYMBOL
FOUND CORNER
PROPOSED WELL
PROPOSED BHL/LPL



NAD 83 (SURFACE LOCATION)

LATITUDE= 40.58423°N
LONGITUDE= 106.38734°W PDOP = 1.835

NAD 83 (TARGET BOTTOM HOLE)

LATITUDE= 40.55599°N
LONGITUDE= 106.38227°W

NAD 83 (LANDING POINT LOCATION)

LATITUDE= 40.58281°N
LONGITUDE= 106.38221°W

NORTH PARK ENGINEERING &
CONSULTING, INC.

P.O. BOX 395
WALDEN, CO 80480
(970) 723-3725

DATE OF FIELD WORK: JULY 5, 2017 DRAWING COMPLETION: JULY 29, 2017

SURVEYED BY: RRM DRAWN BY: ADL CHECKED BY: RRM

T7N, R80W, 6th P.M.

SandRidge Exploration & Production, LLC

GLO BRASS CAP
N=1451814.71'
E=2753283.05'
1939

Bottom Hole Location, Janet 0780 3-16H21
as shown in the SE1/4SW1/4 of Section 21, T7N,
R80W, 6th P.M., Jackson County, Colorado.

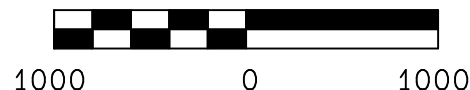
BASIS OF BEARINGS:

US STATE PLANE 1983
CO NORTH 0501 GRID

BASIS OF ELEVATION

NAVD88 Computed using GE0ID12B
as measured using a combination of
Static and Kinematic GPS based on
an OPUS Solution Report.

GRAPHIC SCALE 1"=1000'



I RANDALL R. MILLER, BEING A REGISTERED LAND SURVEYOR IN THE
STATE OF COLORADO, DO HEREBY CERTIFY THAT THIS PLAT WAS
MADE BY ME AND/OR UNDER MY DIRECT SUPERVISION AND THAT
IT IS ACCURATE TO THE BEST OF MY KNOWLEDGE.

DATED THIS _____ DAY OF _____

RANDALL R. MILLER, COLORADO PLS NO. 38084



LEGEND

90° SYMBOL
FOUND CORNER
PROPOSED WELL
PROPOSED BHL/LPL



NAD 83 (TARGET BOTTOM HOLE)

LATITUDE= 40.55599°N
LONGITUDE= 106.38227°W

NAD 83 (SURFACE LOCATION)

LATITUDE= 40.58423°N
LONGITUDE= 106.38734°W PDOP = 1.835

NAD 83 (LANDING POINT LOCATION)

LATITUDE= 40.58281°N
LONGITUDE= 106.38221°W

NORTH PARK ENGINEERING &
CONSULTING, INC.

P.O. BOX 395
WALDEN, CO 80480
(970) 723-3725

DATE OF FIELD WORK: JULY 5, 2017 DRAWING COMPLETION: JULY 29, 2017

SURVEYED BY: RRM

DRAWN BY: ADL

CHECKED BY: RRM