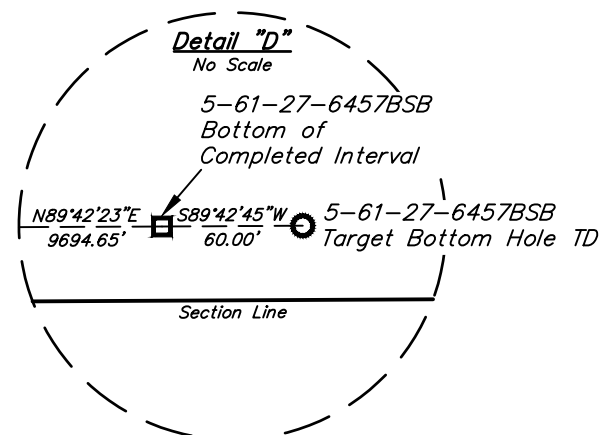
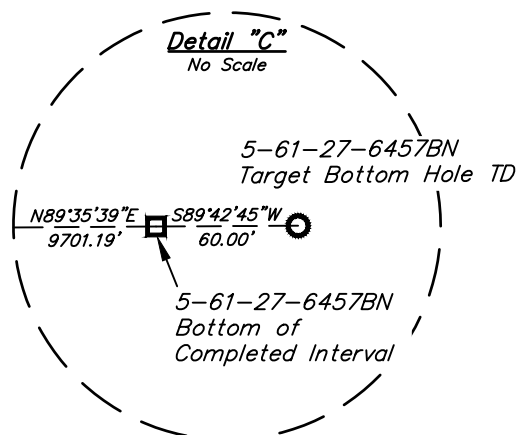
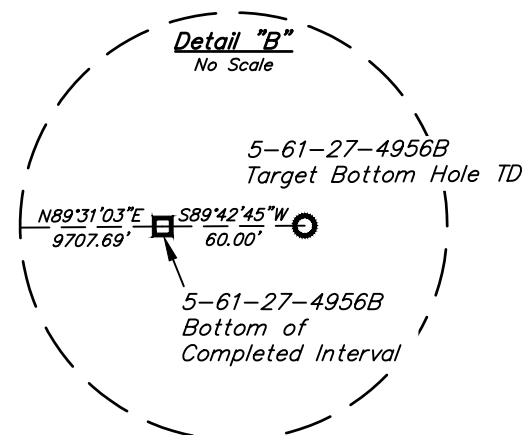
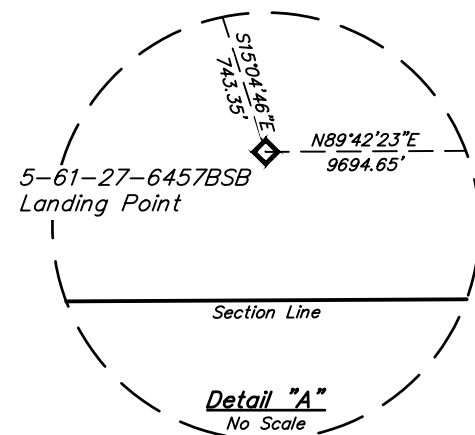
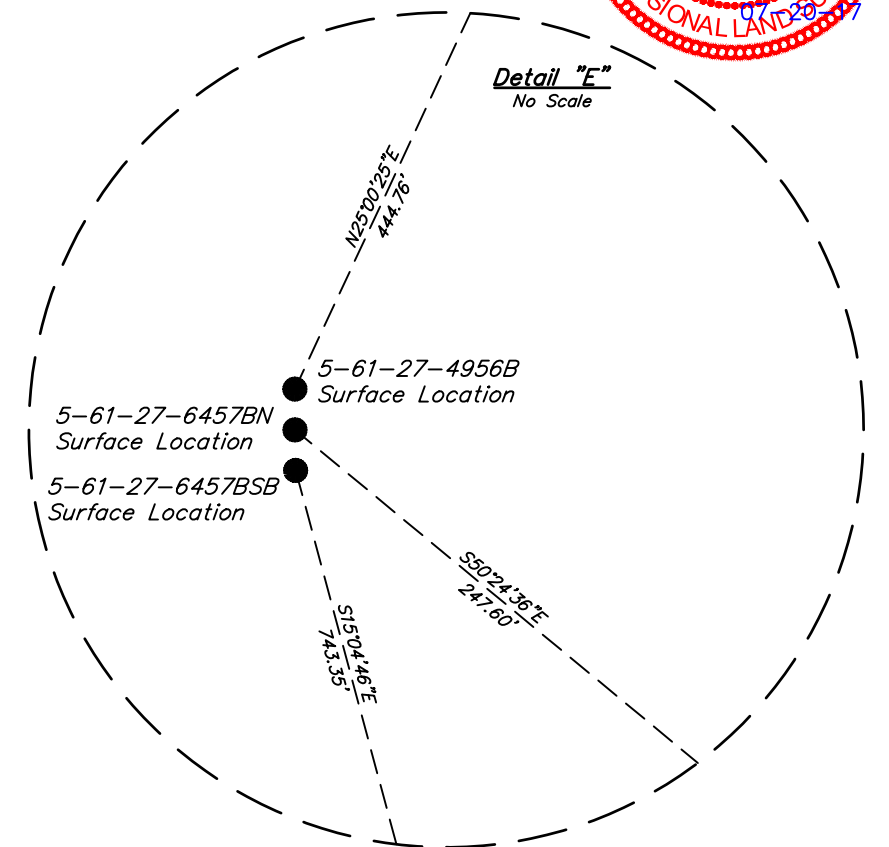


LEGEND:

- = PROPOSED WELLHEAD.
- ◆ = LANDING POINT.
- = BOTTOM OF COMPLETED INTERVAL.
- = TARGET BOTTOM HOLE TD.



REV: 3 07-19-17 C.C. (SHL CHANGE)



UELS, LLC
Corporate Office * 85 South 200 East
Vernal, UT 84078 * (435) 789-1017

BILL BARRETT CORPORATION

ANSCHUTZ WILLIAMS 5-61-27 SWSW PAD
LEAMAN 5-61-27-6457BN
SW 1/4 SW 1/4, SECTION 27, T5N, R61W, 6th P.M.
WELD COUNTY, COLORADO

SURVEYED BY	GREG WEIMER, N.P.	01-13-17	SCALE
DRAWN BY	C.C.	04-14-17	1" = 1000'
MULTI-WELL PLAN			FIGURE #5