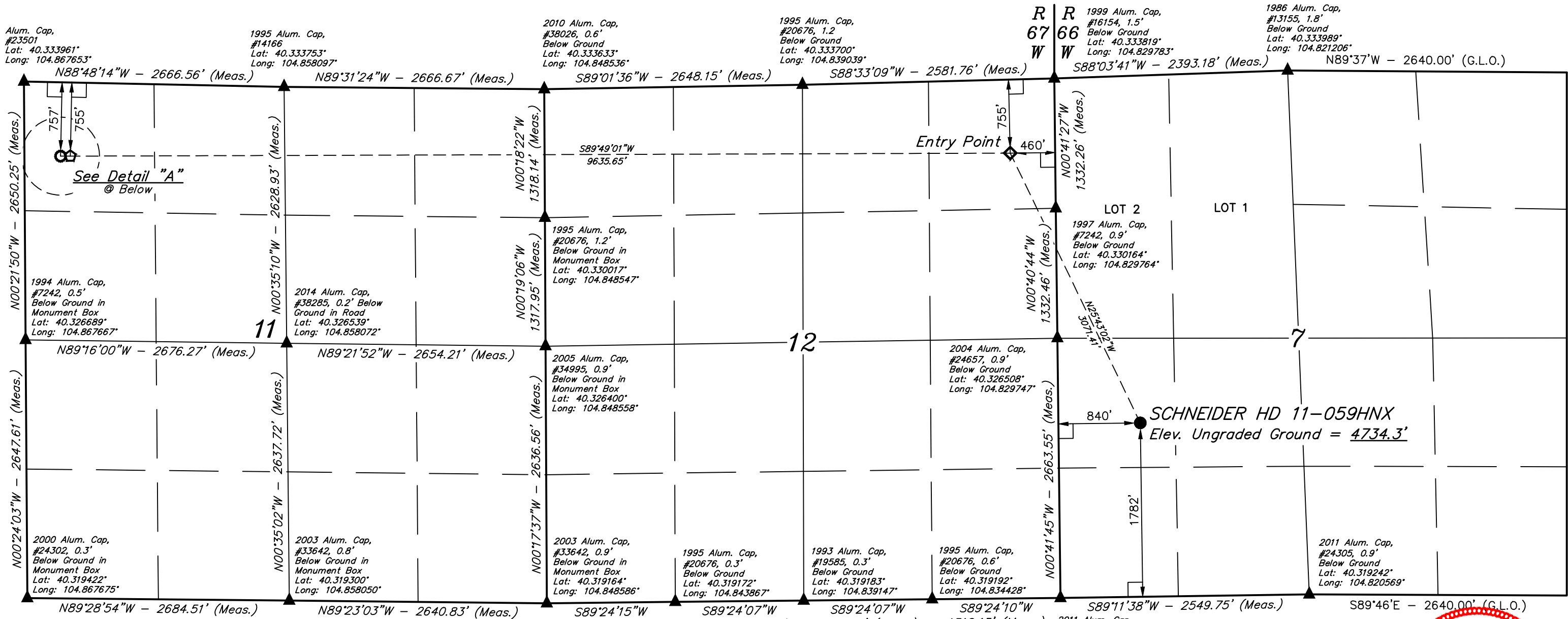
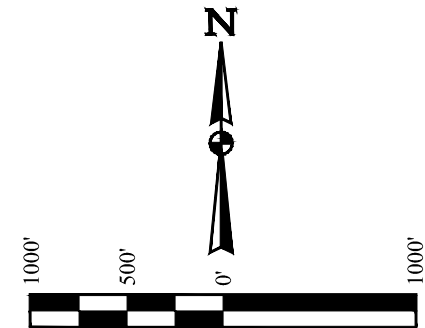
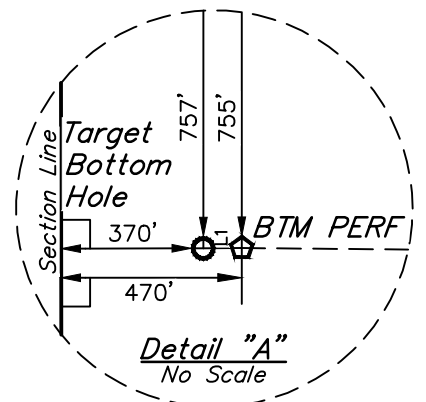


# T4N, R66W, 6th P.M.



LINE TABLE		
LINE	DIRECTION	LENGTH
L1	S89°49'01"W	100.00'

- LEGEND:**
- ◻ = 90° SYMBOL
  - = PROPOSED WELLHEAD.
  - ◆ = ENTRY POINT.
  - = TARGET BOTTOM HOLE.
  - ◻ = BTM PERF.
  - ▲ = SECTION CORNERS LOCATED. (NAD 83)



**CERTIFICATE**  
 THIS IS TO CERTIFY THAT THE ABOVE PLAT WAS PREPARED FROM FIELD NOTES OF ACTUAL SURVEYS MADE BY ME OR UNDER MY SUPERVISION AND THAT THE SAME ARE TRUE AND CORRECT TO THE BEST OF MY KNOWLEDGE AND BELIEF.

*Jared Christopher*  
 JARED CHRISTOPHER, C.T.  
 REGISTERED LAND SURVEYOR  
 REGISTRATION NO. 28285  
 STATE OF COLORADO

REV: 1 05-04-17 K.B. (SL, TBH MOVE & BTM PERF ADD)

**GREAT WESTERN OPERATING COMPANY**  
 SCHNEIDER HD 11-059HNX  
 NW 1/4 SW 1/4, SECTION 7, T4N, R66W, 6th P.M.  
 WELD COUNTY, COLORADO

**BASIS OF BEARINGS**  
 BASIS OF BEARINGS IS A G.P.S. OBSERVATION

**BASIS OF ELEVATION**  
 USGS COOPERATIVE BASE NETWORK CONTROL STATION, DESIGNATION "VERMILYEA". NGS DATA SHEET LISTS THE NAVD 88 ELEVATION AS BEING 5026 FEET.

NAD 83 (SURFACE LOCATION)	NAD 83 (ENTRY POINT)	NAD 83 (BTM PERF)	NAD 83 (TARGET BOTTOM HOLE)
LATITUDE = 40°19'26.77" (40.324103) LONGITUDE = 104°49'36.21" (104.826725)	LATITUDE = 40°19'54.22" (40.331728) LONGITUDE = 104°49'53.12" (104.831422)	LATITUDE = 40°19'54.67" (40.331853) LONGITUDE = 104°51'57.50" (104.865972)	LATITUDE = 40°19'54.67" (40.331853) LONGITUDE = 104°51'58.79" (104.866331)
NAD 27 (SURFACE LOCATION)	NAD 27 (ENTRY POINT)	NAD 27 (BTM PERF)	NAD 27 (TARGET BOTTOM HOLE)
LATITUDE = 40°19'26.84" (40.324122) LONGITUDE = 104°49'34.31" (104.826197)	LATITUDE = 40°19'54.28" (40.331744) LONGITUDE = 104°49'51.22" (104.830894)	LATITUDE = 40°19'54.73" (40.331869) LONGITUDE = 104°51'55.60" (104.865444)	LATITUDE = 40°19'54.73" (40.331869) LONGITUDE = 104°51'56.89" (104.865803)

SURVEYED BY: JARED CHRISTOPHER, C.T.	DATE: 05-01-17
DRAWN BY: L.C.S.	DATE DRAWN: 12-19-16
SCALE: 1" = 1000'	



**UELS, LLC**  
 Corporate Office \* 85 South 200 East  
 Vernal, UT 84078 \* (435) 789-1017

**WELL LOCATION PLAT**