



Radial
Cement Bond
Gamma Ray
CCL Log

Company Chevron		Company Chevron	
Pad	Fee 143X	Pad	
Well	Rangley	Well	Fee 143X
Field	Rio Blanco	Field	Rangley
County	Co	County	Rio Blanco
State		State	Co
Location:		API # : 05-103-09130	Other Services
SHL: 1268' FNL & 2593' FEL			
Permanent Datum	SEC 20 TWP 2N RGE 102W	Ground Level	Elevation 5306'
Log Measured From	KB	20'	Elevation K.B. 5324.5'
Drilling Measured From	KB		D.F. G.L. 5305'
Date	24-Aug-2017		
Run Number	One		
Depth Driller	6562'		
Depth Logger	3180'		
Bottom Logged Interval	3179'		
Top Log Interval	Surface		
Open Hole Size	9.625		
Type Fluid	Water		
Density / Viscosity			
Max. Recorded Temp.			
Estimated Cement Top	Surface		
Time Well Ready	OA		
Time Logger on Bottom	8:00am		
Equipment Number	143		
Location	Vernal		
Recorded By	Eric Atwood		
Witnessed By	Joe Arnold		
Borehole Record		Tubing Record	
Run Number	Bit	From	To
		Size	Weight
			From
			To
Casing Record	Size	Wgt/Ft	Top
Surface String	9.625	39#	Surface
Prot. String			
Production String	7"	23#	Surface
Liner			6562'

<<< Fold Here >>>

All interpretations are opinions based on inferences from electrical or other measurements and we cannot and do not guarantee the accuracy or correctness of any interpretation, and we shall not, except in the case of gross or willful negligence on our part, be liable or responsible for any loss, costs, damages, or expenses incurred or sustained by anyone resulting from any interpretation made by any of our officers, agents or employees. These interpretations are also subject to our general terms and conditions set out in our current Price Schedule.

Comments

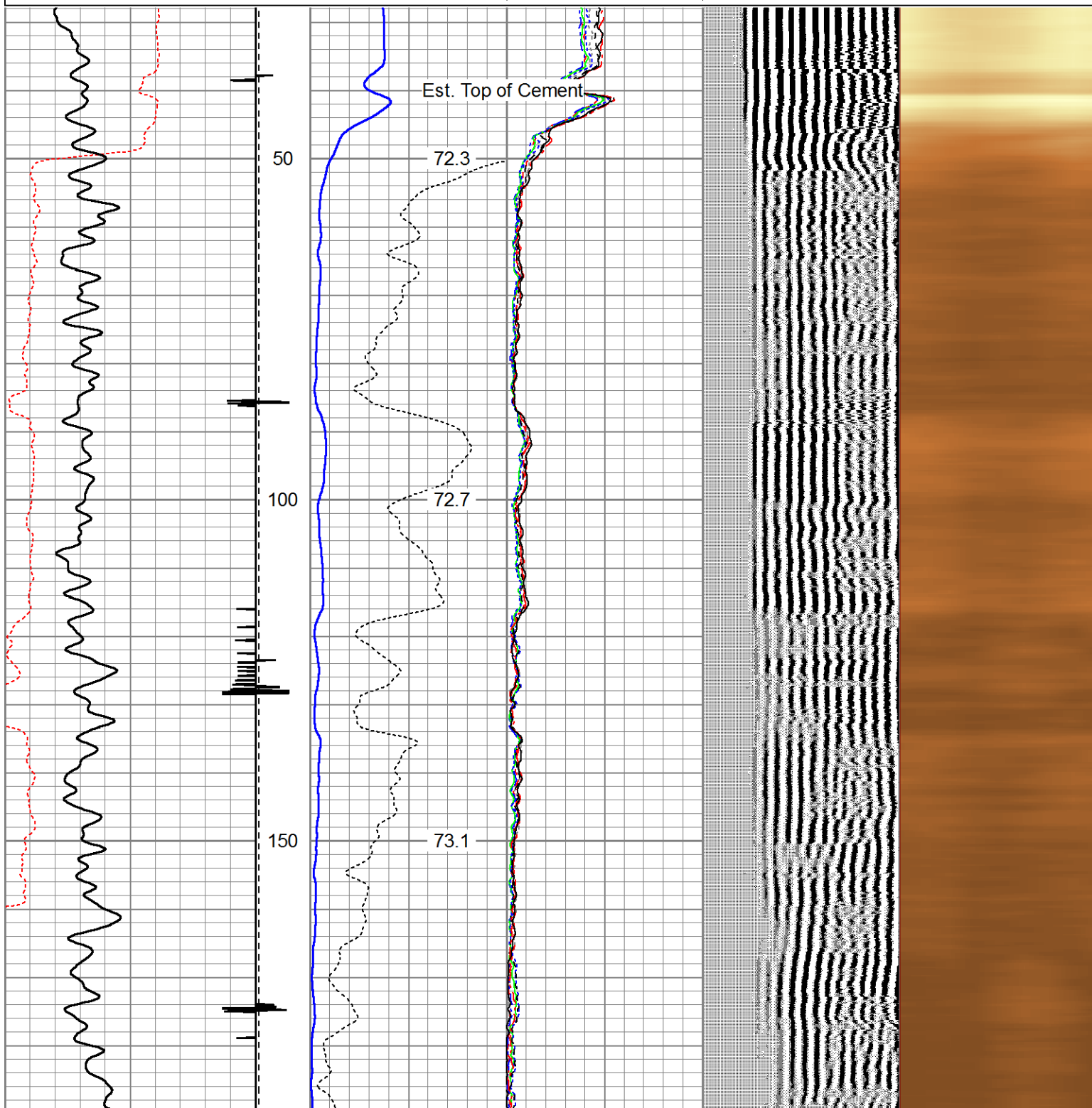
Log Correlated To Ground Surface

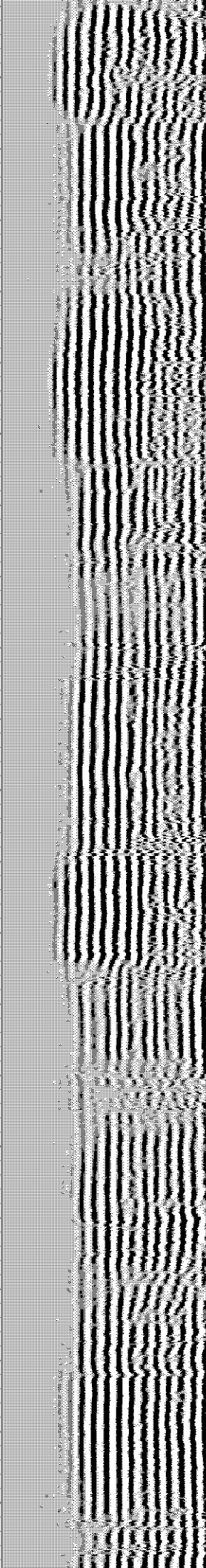
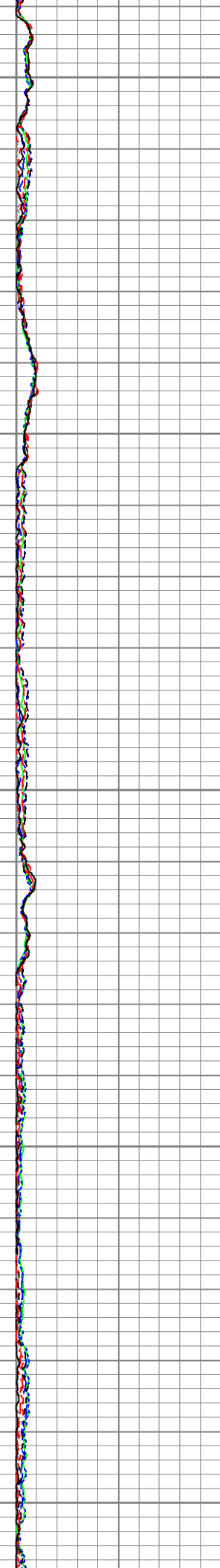
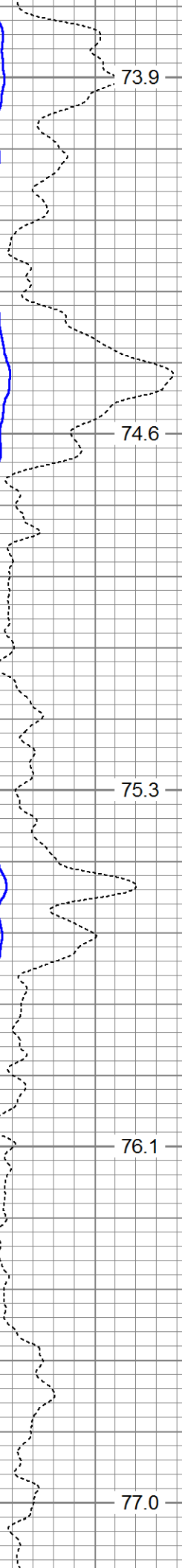
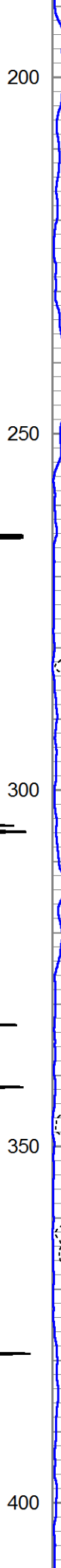
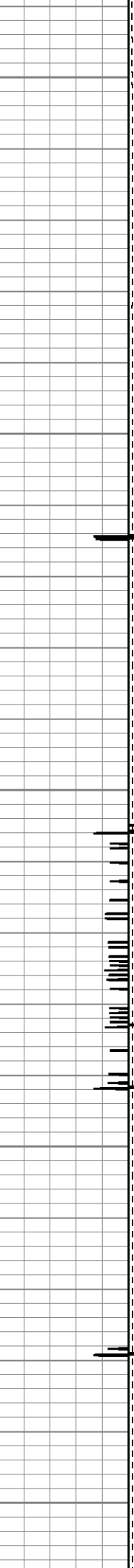
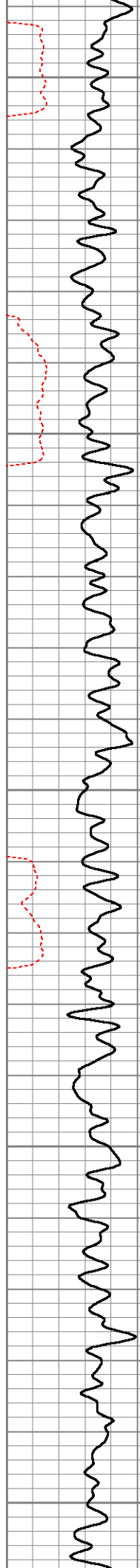


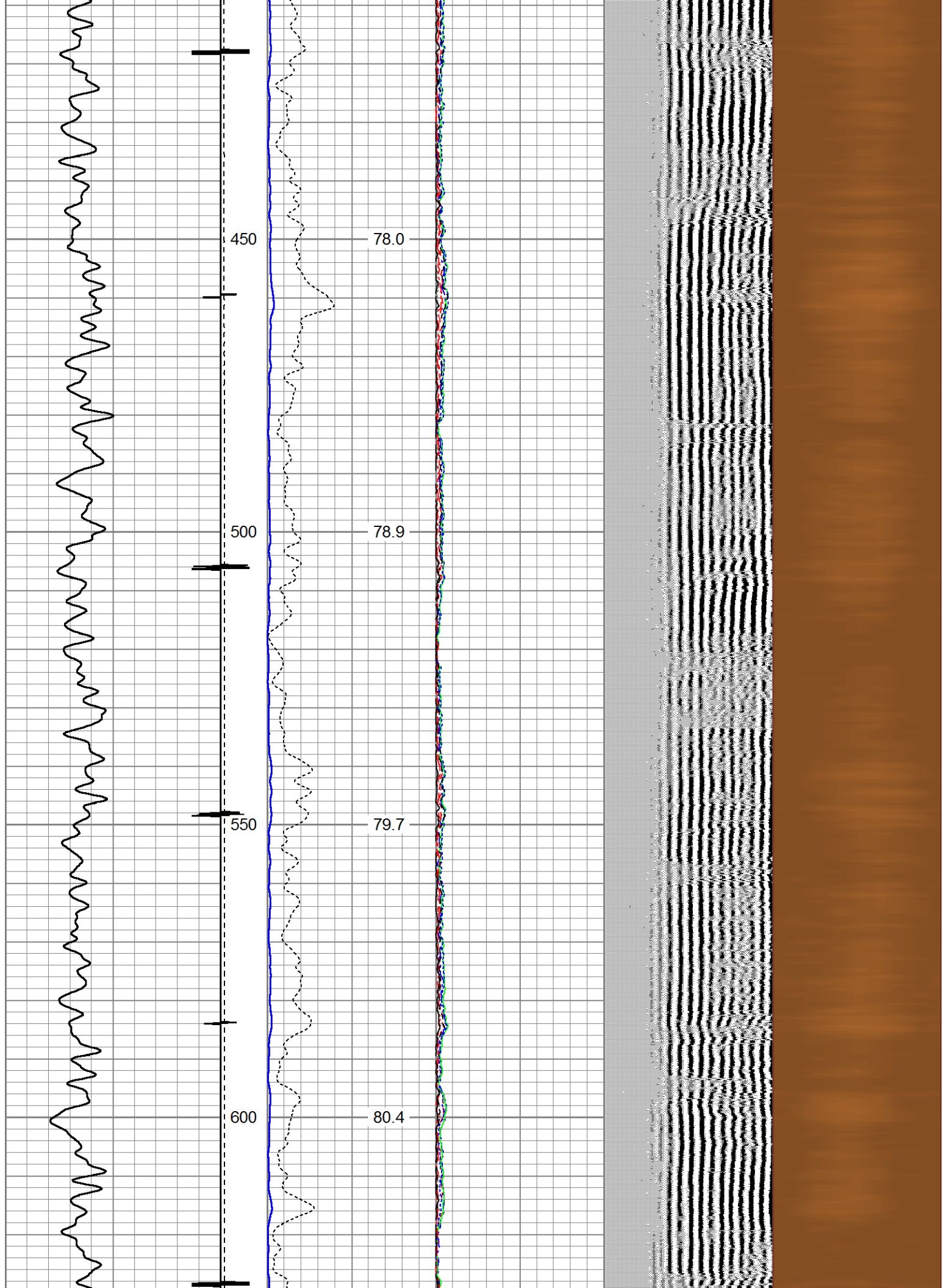
Main Pass

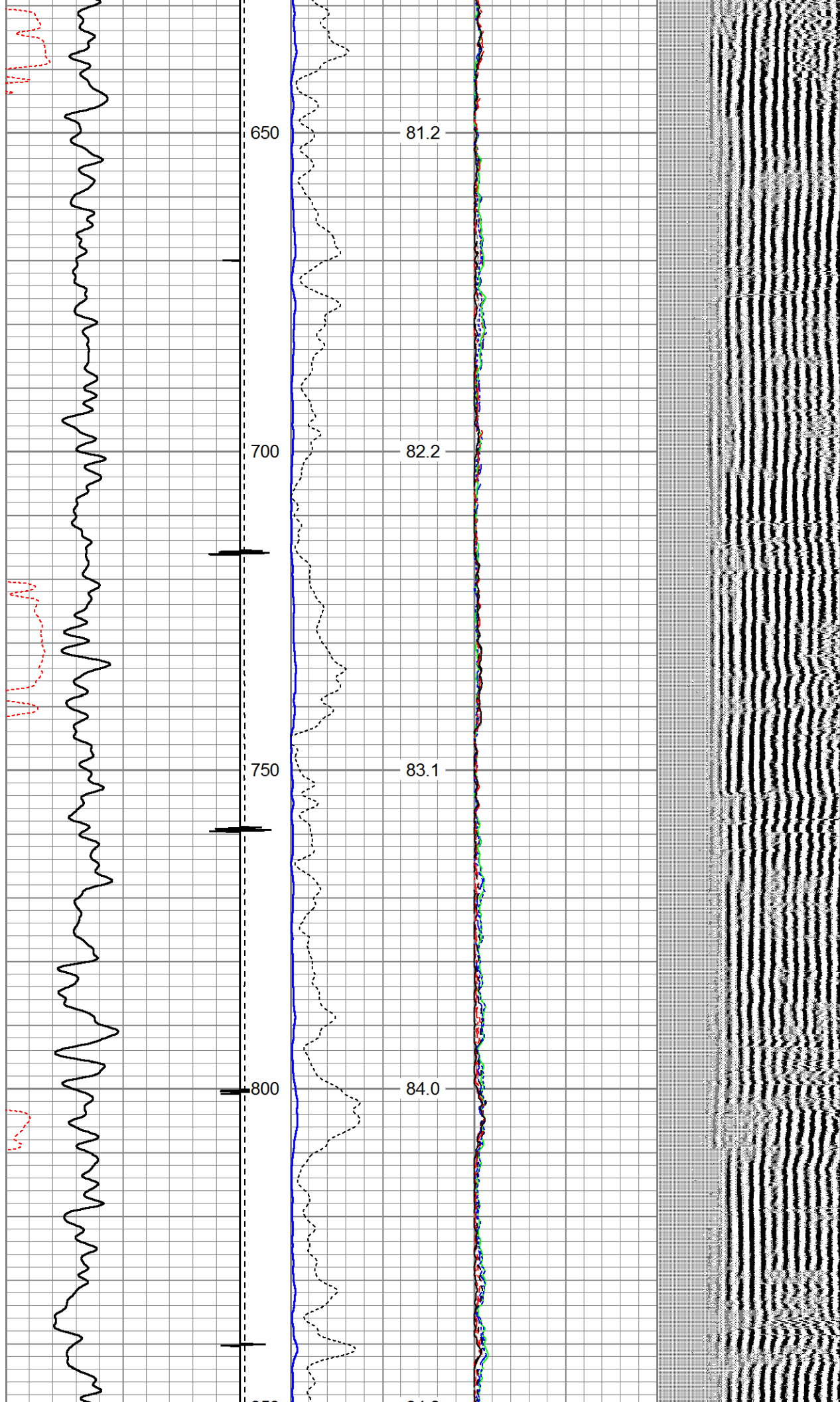
Logged With 0 PSI Surface Pressure

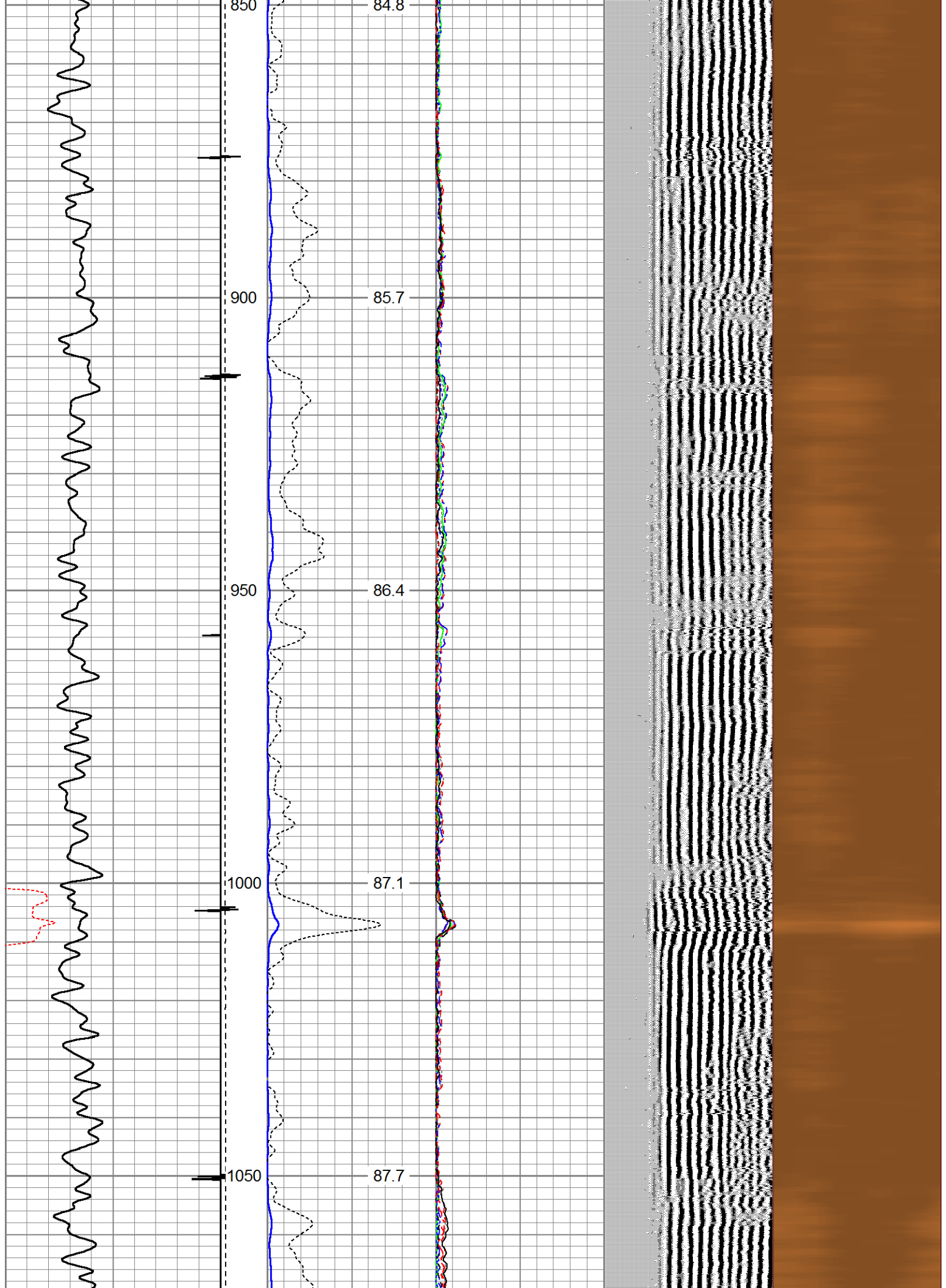
343	TT (usec)	243	LTEN	0	Amplitude (mV)	100	0	AMPS2	100	200	VDL	1200	Cement Map	1	100
0	GR (GAPI)	150	(lb)	0	Amplified Amplitude	10	0	AMPS3	100						
			CCL	000	(mV)		0	AMPS4	100						
					Temperature		0	AMPS5	100						
					(degF)		0	AMPS6	100						
							0	AMPS7	100						
							0	AMPS8	100						
							0	AMPS1	100						

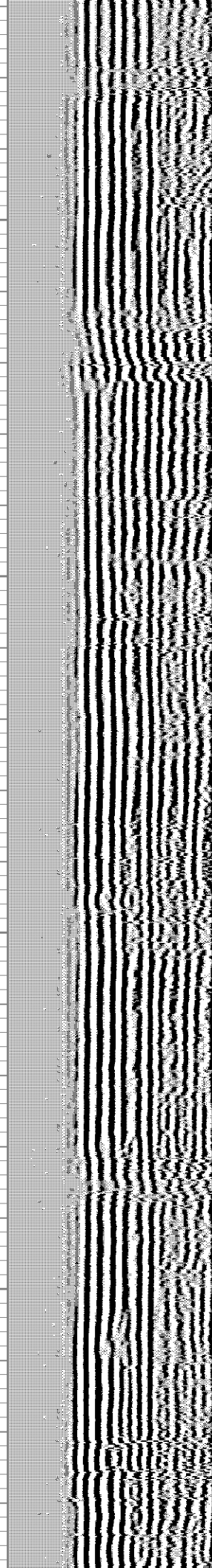
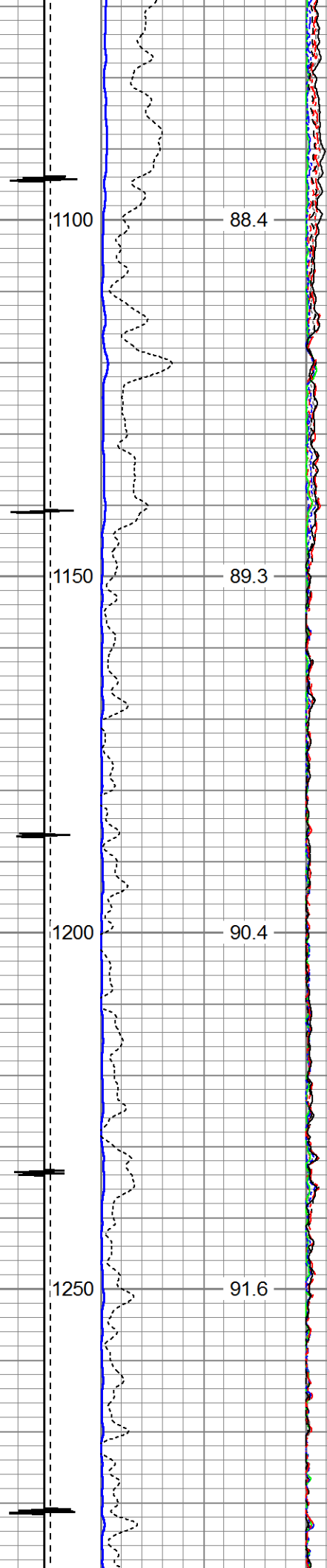
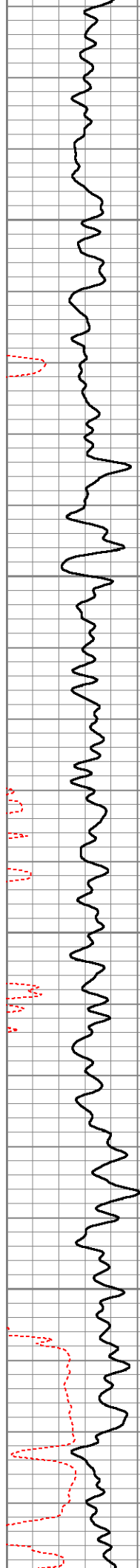


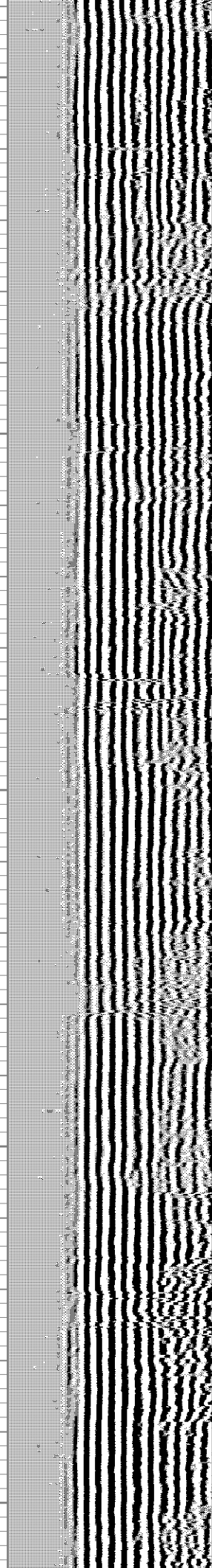
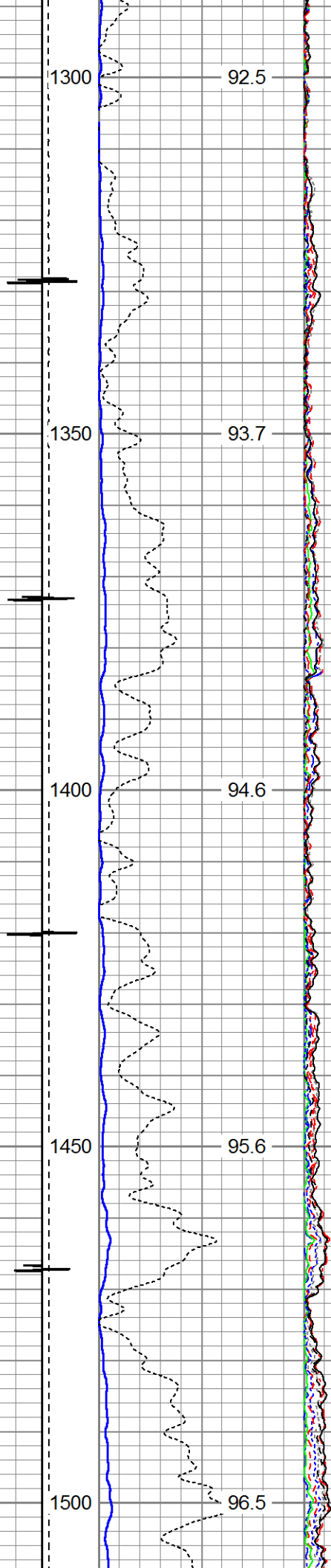
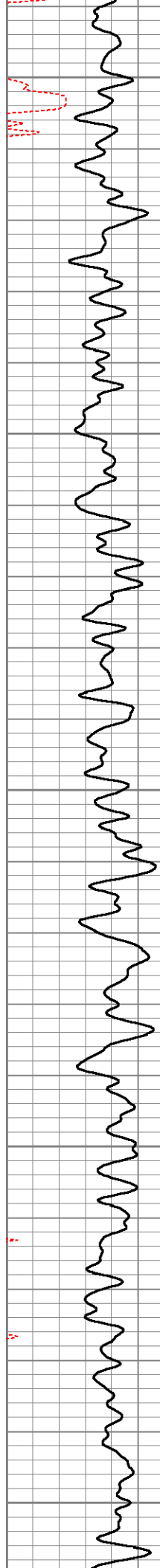


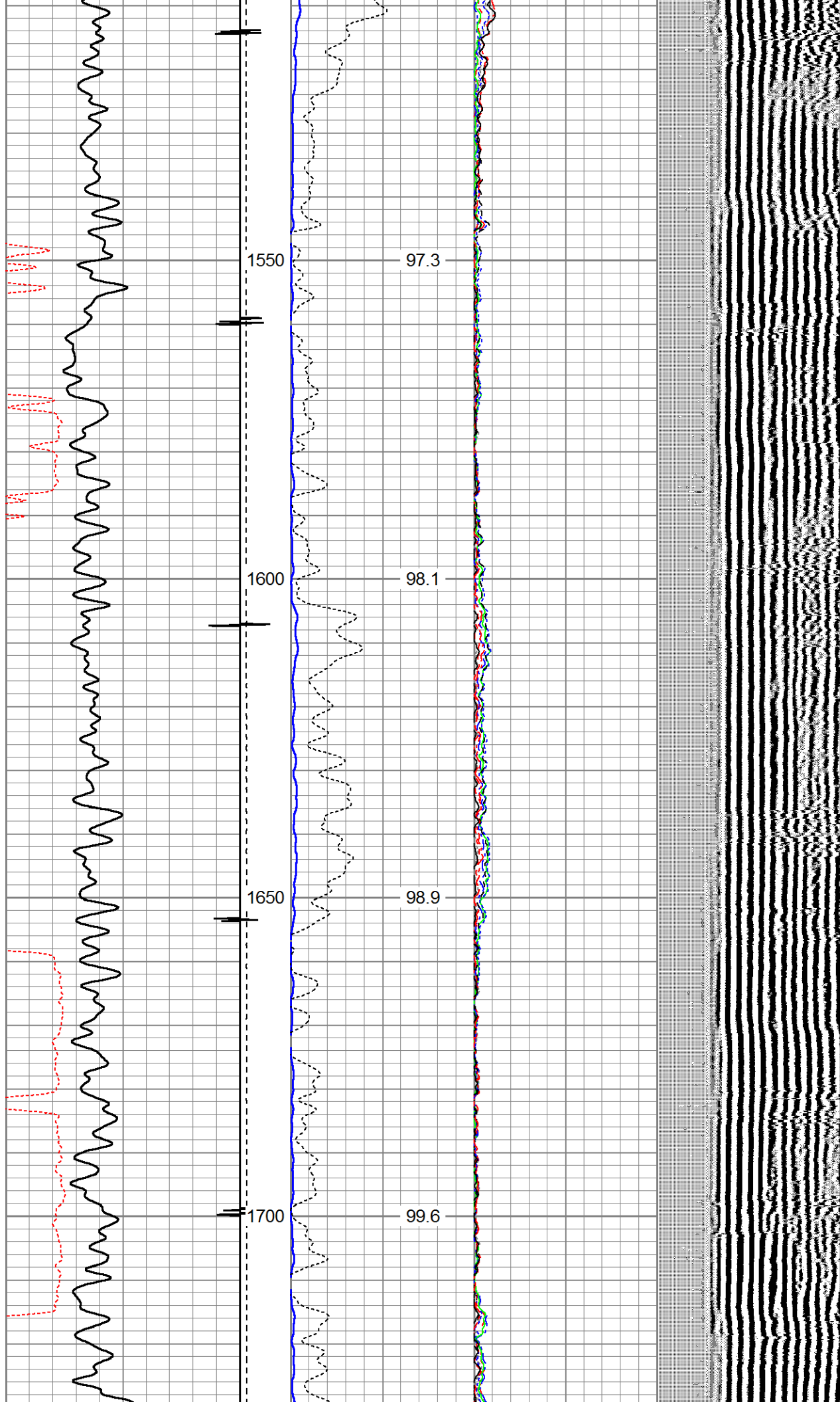


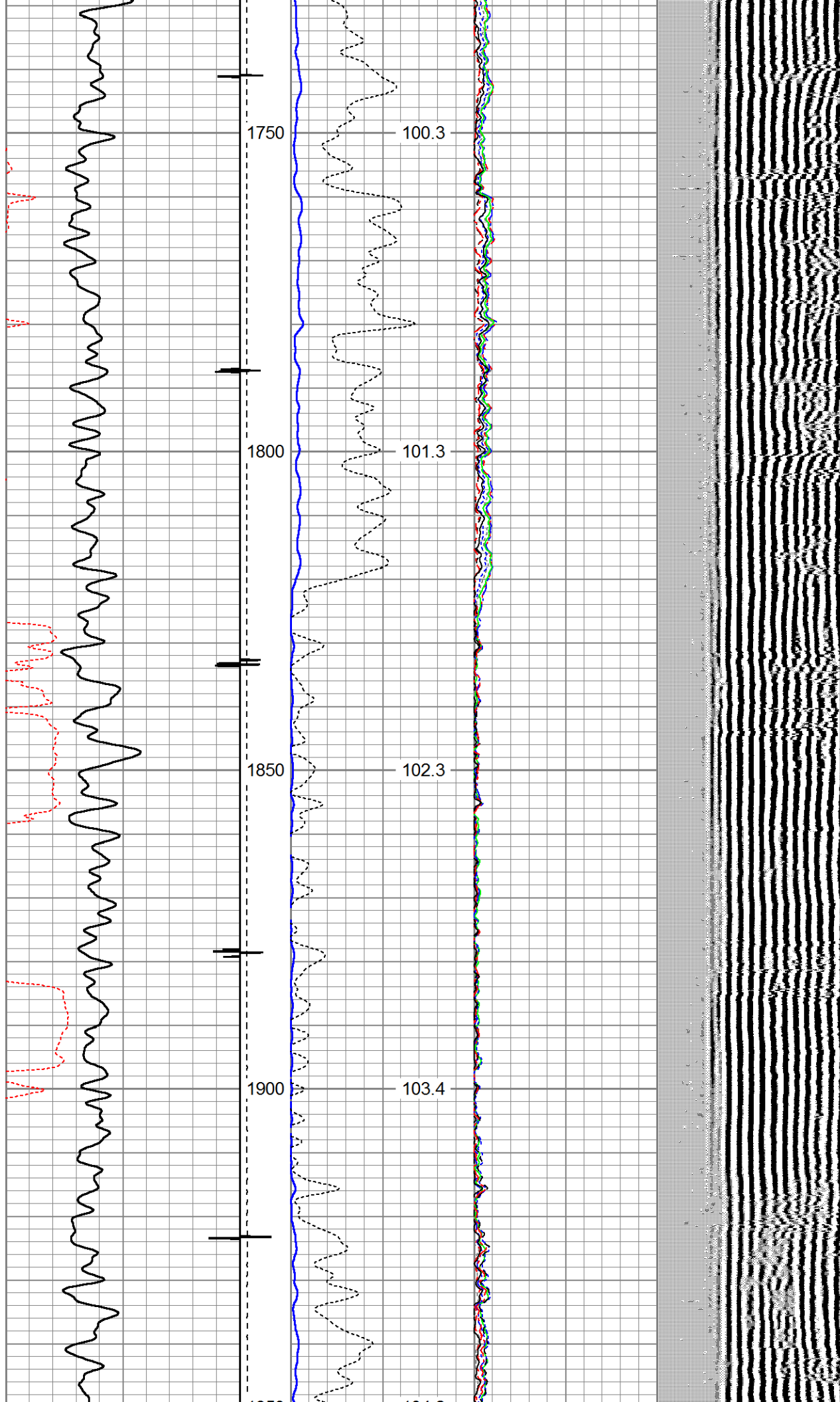


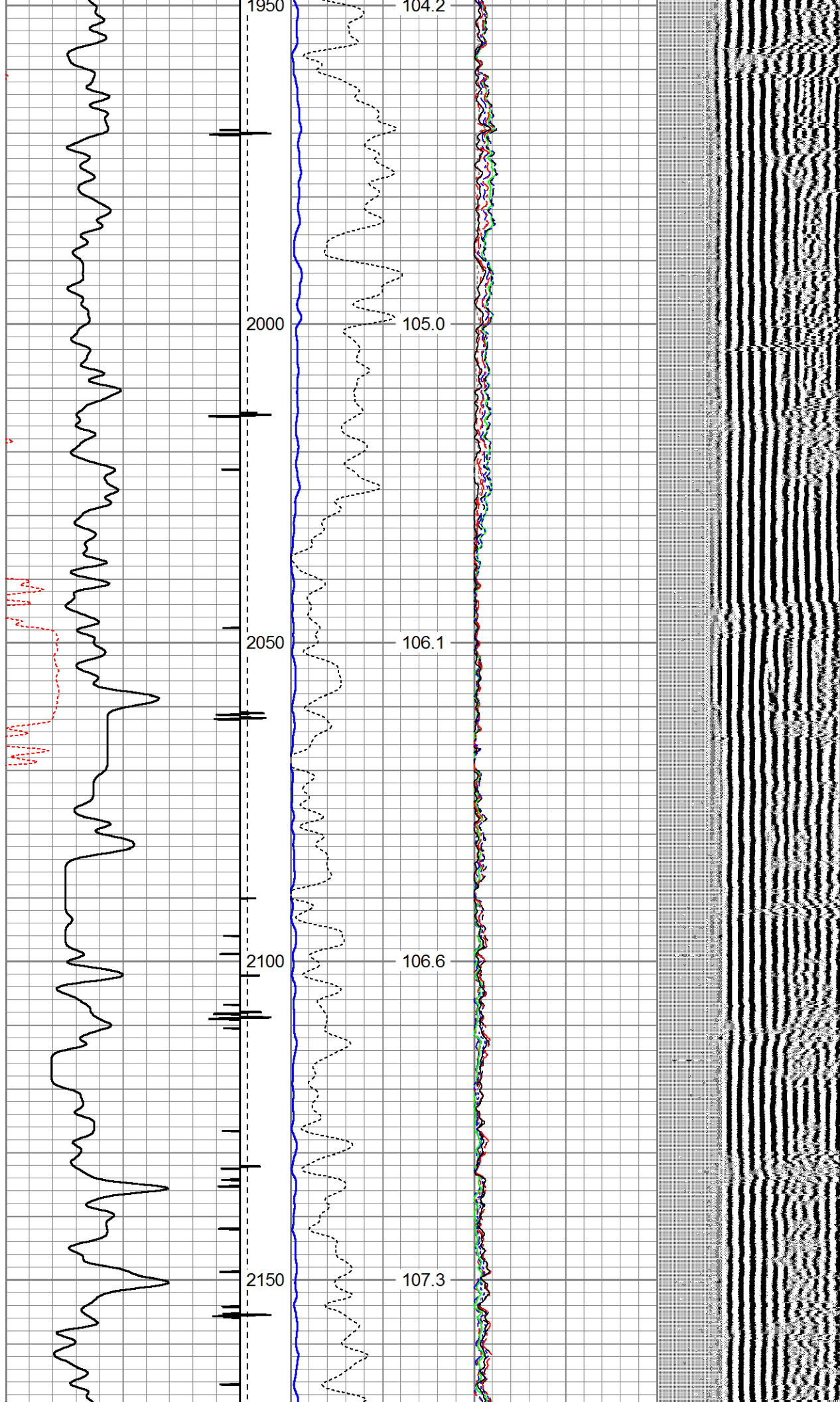


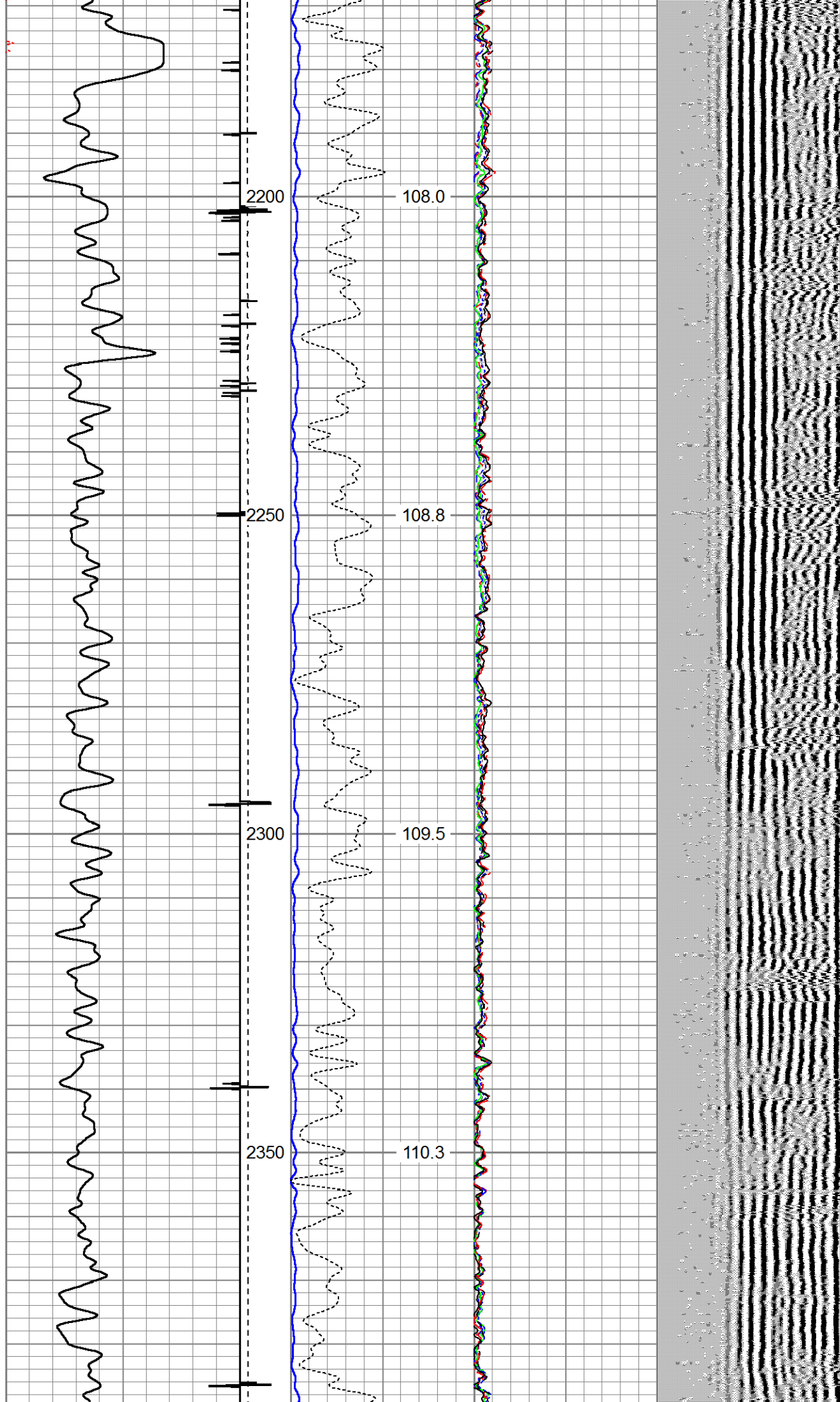


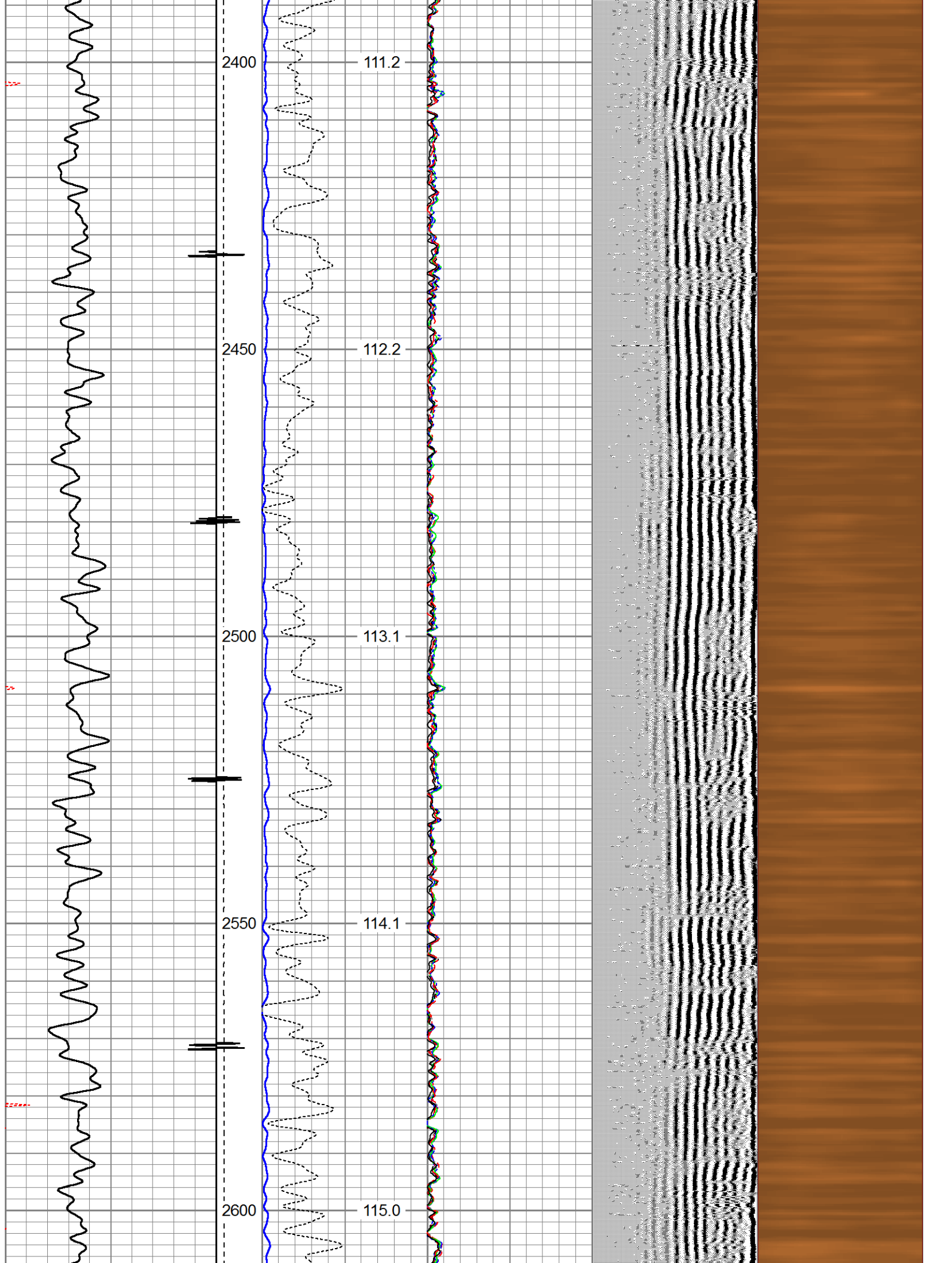


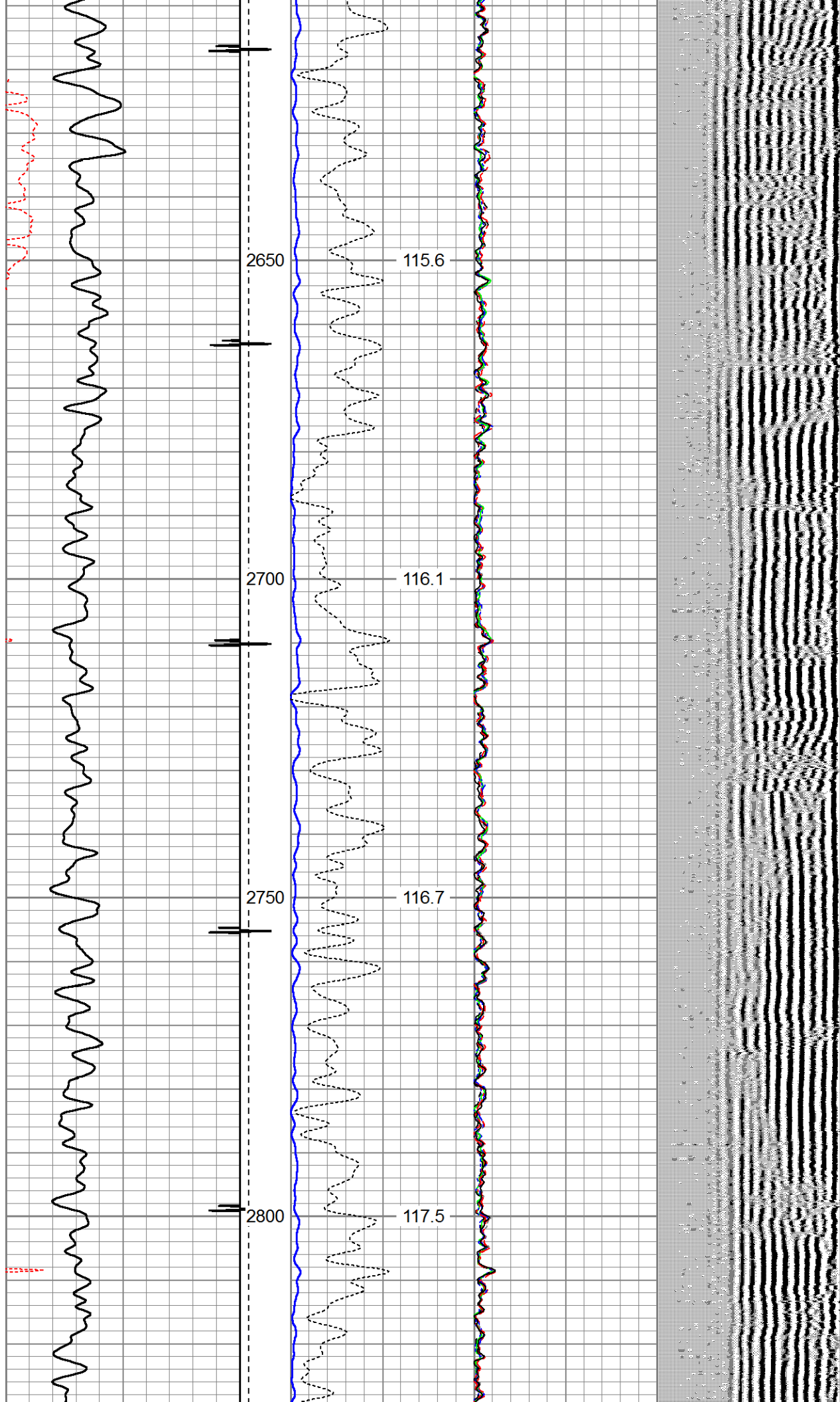


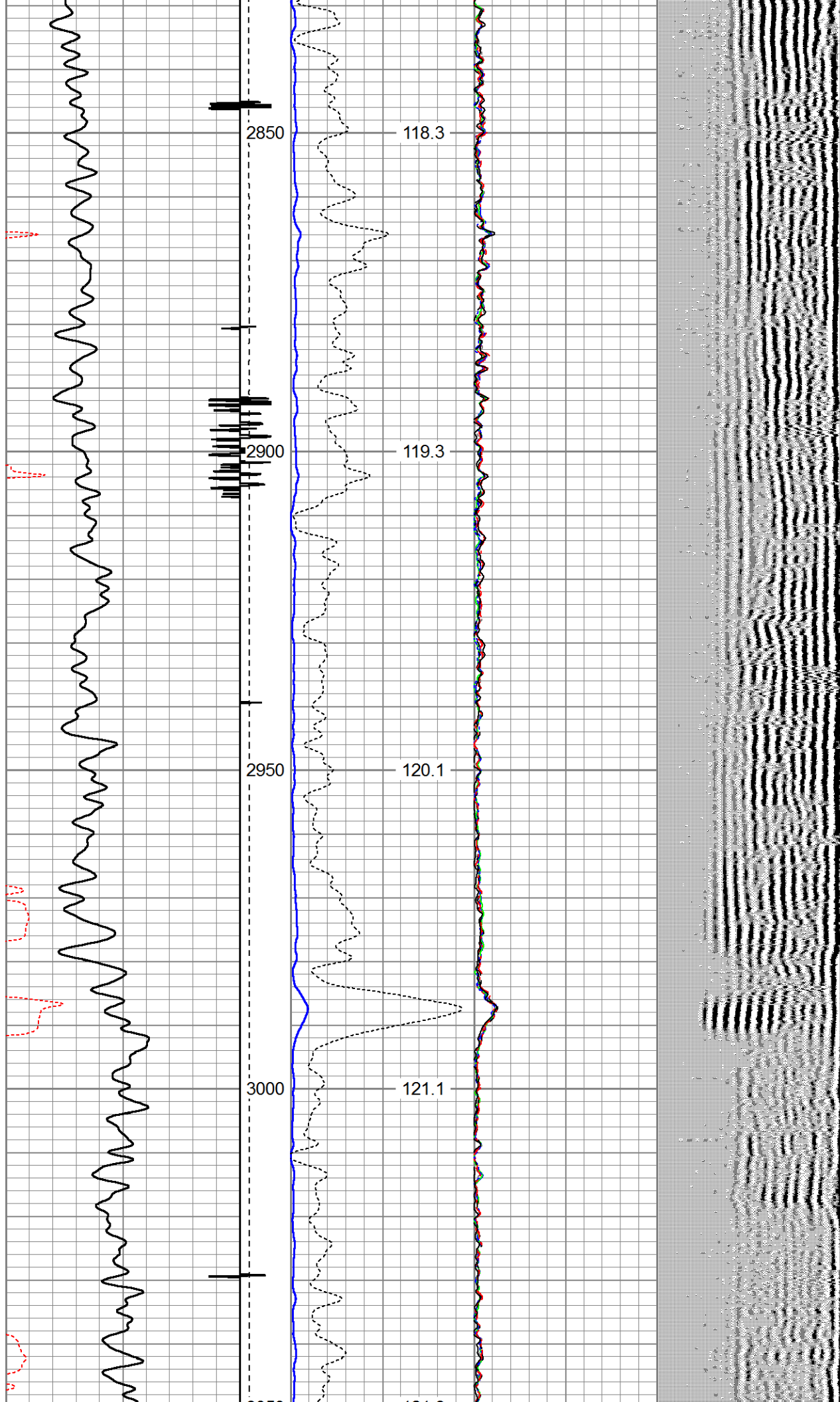


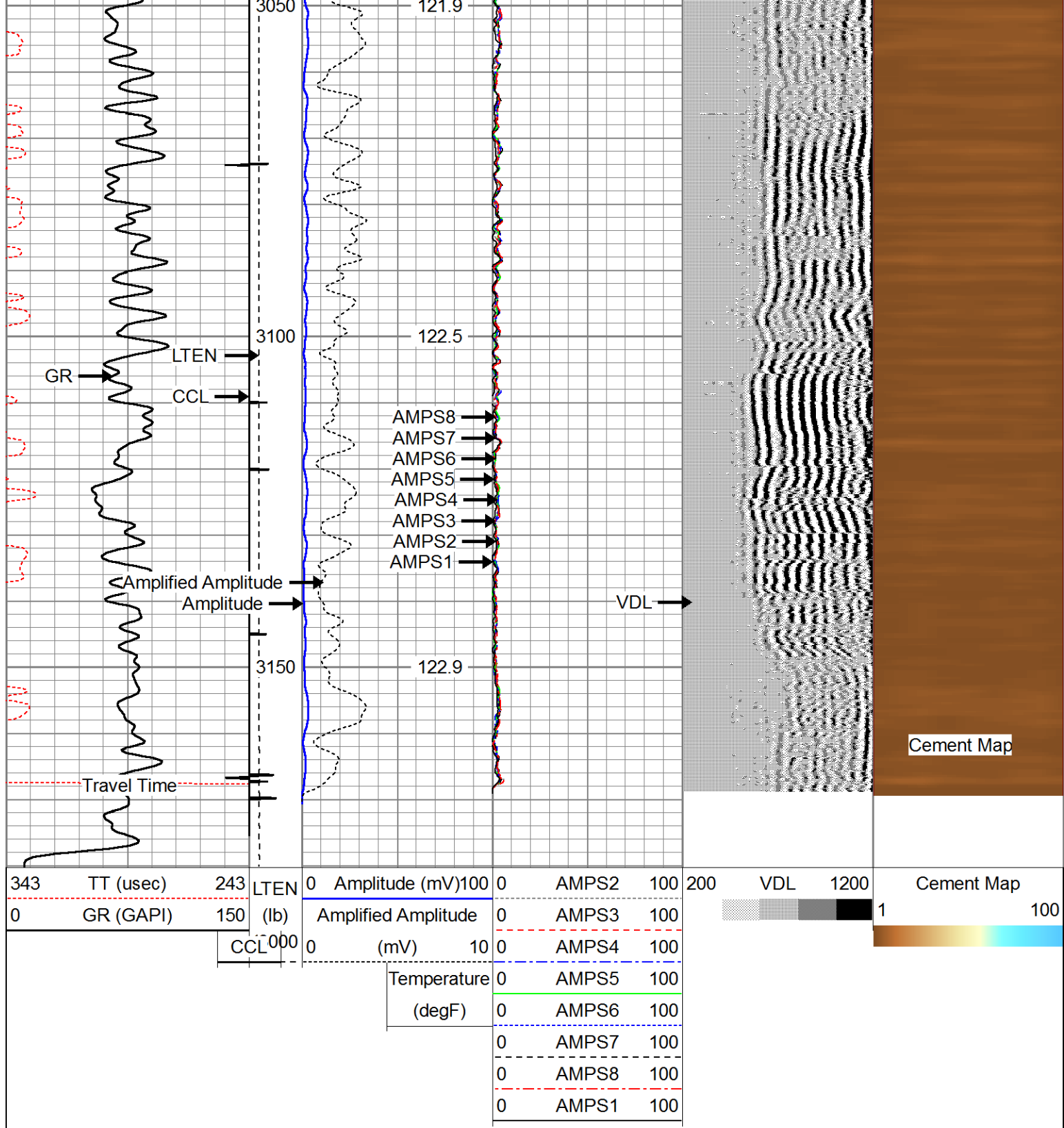












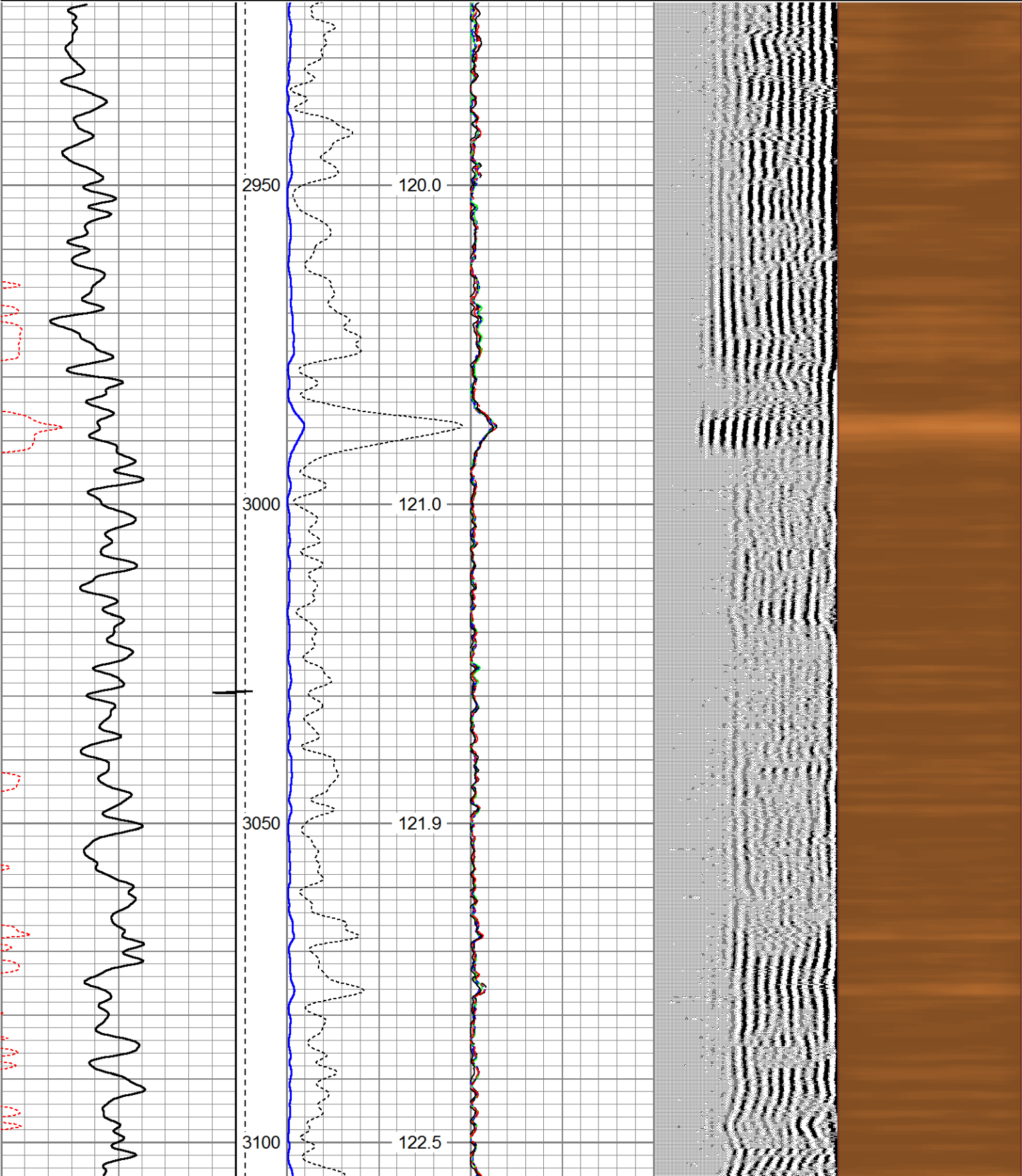
Repeat Pass

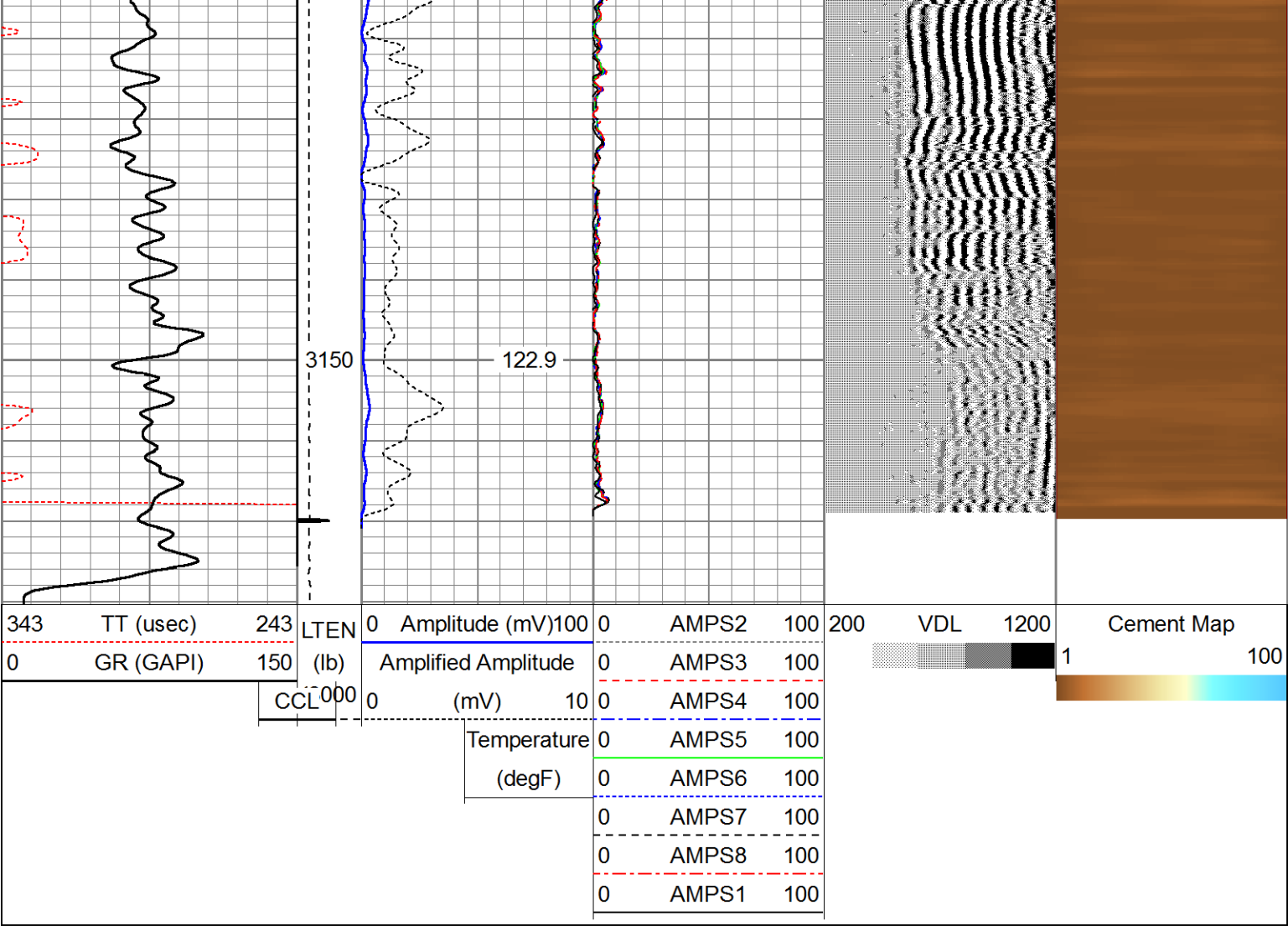
Logged With 0 PSI Surface Pressure

Database File: fee143x.db
 Dataset Pathname: pass4
 Presentation Format: rbl55
 Dataset Creation: Thu Aug 24 07:54:43 2017 by Log 7.0 B1
 Charted by: Depth in Feet scaled 1:240

343	TT (usec)	243	LTEN	0	Amplitude (mV)	100	0	AMPS2	100	200	VDL	1200	Cement Map
-----	-----------	-----	------	---	----------------	-----	---	-------	-----	-----	-----	------	------------

0	GR (GAPI)	150	(lb)	Amplified Amplitude	0	AMPS3	100
				(mV)	0	AMPS4	100
				Temperature	0	AMPS5	100
				(degF)	0	AMPS6	100
					0	AMPS7	100
					0	AMPS8	100
					0	AMPS1	100





Sensor	Offset (ft)	Schematic	Description	Len (ft)	OD (in)	Wt (lb)
			Titan 1 7/16" Cable Head	1.00	1.44	1.00
			Probe	2.83	2.75	40.00
IntTemp	15.58					
WVF3FT	12.42		RBT-Probe (060112_45) Probe Radii Bond Tool with Digital Telemetry	8.75	2.75	90.00
WVFCAL	12.42					
WVFS1	12.42					
WVFS2	12.42					
WVFS3	12.42					

Tool Name	Start Depth (ft)	End Depth (ft)	Length (ft)	Weight (lb)	O.D. (in)
WVFS3	12.42	12.42			
WVFS4	12.42	12.42			
WVFS5	12.42	12.42			
WVFS6	12.42	12.42			
WVFS7	12.42	12.42			
WVFS8	12.42	12.42			
WVF5FT	11.33	11.33			
Probe			2.83	2.75	40.00
CCL	4.75	4.75			
GR-Probe (060108) Probe 2.75" 4 Channel Pulse			4.00	2.75	30.00
GR	2.25	2.25			
TEMP-1.375TEMP (060110) Temperature Tool			1.25	1.38	30.00
TEMP	0.08	0.08			
Dataset: fee143x.db: field/well/run1/pass5 Total Length: 20.67 ft Total Weight: 231.00 lb O.D.: 2.75 in					