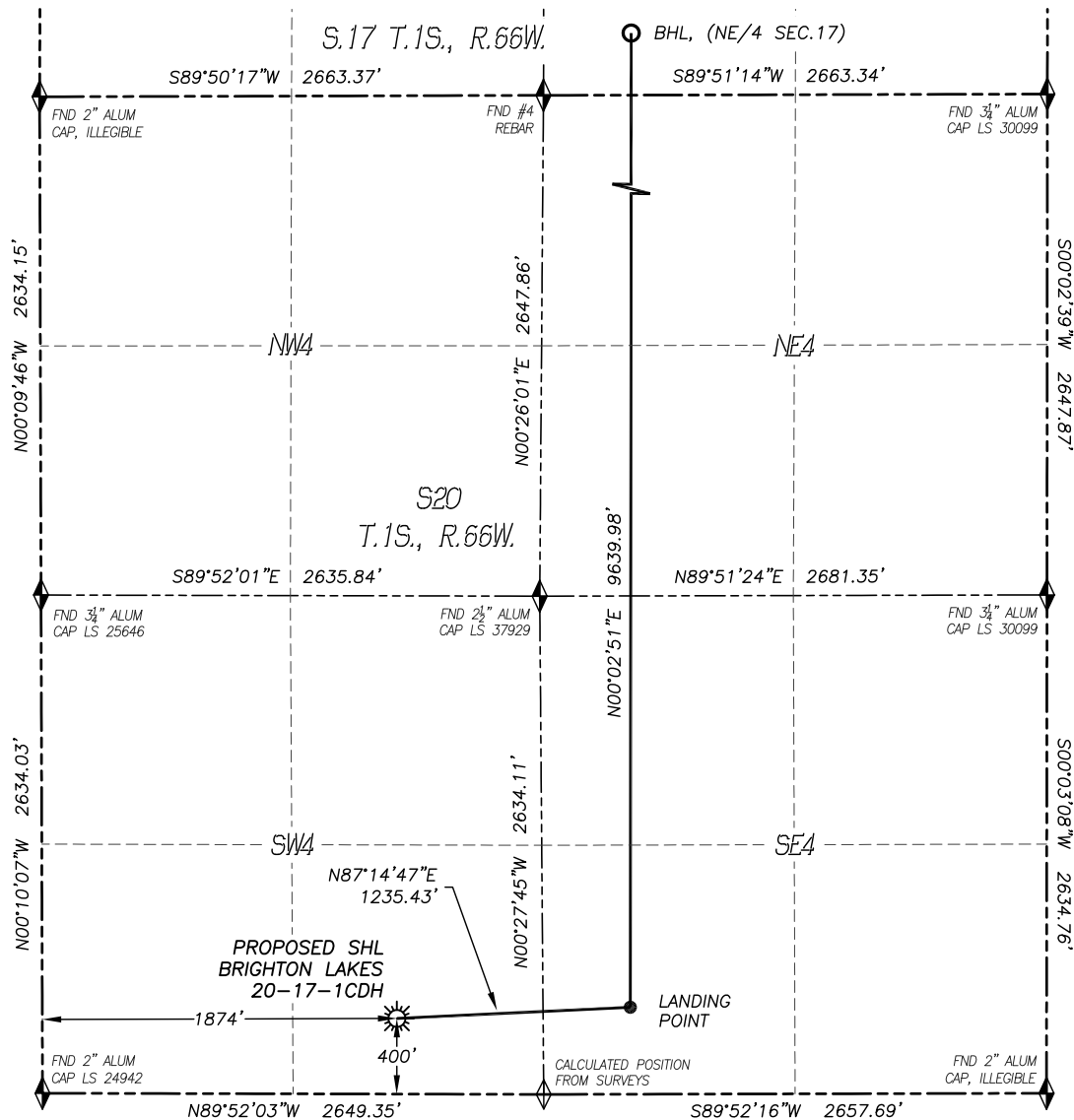


# WELL LOCATION CERTIFICATE

## BRIGHTON LAKES 20-17-1CDH

SECTION: 20  
TOWNSHIP: 1S  
RANGE: 66W



IN ACCORDANCE WITH A REQUEST FROM PETROSHARE CORP., DALEY LAND SURVEYING, INC. HAS DETERMINED THE SURFACE LOCATION OF THE BRIGHTON LAKES 20-17-1CDH WELL TO BE 400' FSL, 1874' FWL, AS MEASURED AT NINETY (90) DEGREES FROM THE SECTION LINES OF SECTION 20, TOWNSHIP 1 SOUTH, RANGE 66 WEST, AND THE BOTTOM HOLE LOCATION TO BE 460' FNL, 2200' FEL, AS MEASURED AT NINETY (90) DEGREES FROM THE SECTION LINES OF SECTION 17, TOWNSHIP 1 SOUTH, RANGE 66 WEST OF THE 6TH PRINCIPAL MERIDIAN, ADAMS COUNTY, COLORADO.

I HEREBY CERTIFY THAT THIS WELL LOCATION CERTIFICATE WAS PREPARED BY ME OR UNDER MY DIRECT SUPERVISION, THAT THE WORK WAS COMPLETED ON 12/21/2016 FOR AND ON BEHALF OF PETROSHARE CORP., AND THAT THIS MAP DOES NOT REPRESENT A BOUNDARY SURVEY, IT IS NOT A LAND SURVEY PLAT OR AN IMPROVEMENT SURVEY PLAT AND IT IS NOT TO BE RELIED UPON FOR THE ESTABLISHMENT OF FENCE, BUILDING OR OTHER FUTURE IMPROVEMENT LINES.

### NOTES:

- 1) BEARINGS FOR THIS MAP ARE ASSUMED AND BASED UPON GPS OBSERVATIONS MADE BETWEEN MONUMENTS LOCATED AT THE SOUTHWEST CORNER AND WEST QUARTER CORNER OF SECTION 20, T.1S., R.66W.
- 2) HORIZONTAL DATUM IS NAD83.
- 3) VERTICAL DATUM IS NAVD88 AND ORIGINATES FROM THE LOCAL C.O.R.S. NETWORK, UTILIZING THE GEOID12A MODEL.
- 4) SEE LOCATION DRAWING FOR VISIBLE IMPROVEMENTS WITHIN 500' OF PROPOSED DISTURBED AREA.
- 5) SURFACE USE: AGRICULTURAL.
- 6) INST. OPERATOR: KYLE DALEY

### NEAREST CULTURAL ITEMS:

BUILDING: 1048'± E  
BUILDING UNIT: 1137'± SE  
HIGH OCC. BLD. UNIT: 5280'±  
DES. OUTSIDE ACTIVITY AREA: 5280'±  
PUBLIC ROAD: 386'± S  
ABOVE GROUND UTILITY: 432'± S  
RAILROAD: 4685'± SE  
PROPERTY LINE: 400'± S

### NAD 83 LATITUDE AND LONGITUDE

#### SURFACE LOCATION:

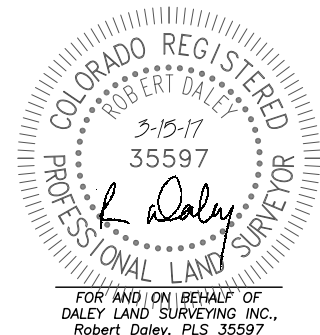
LATITUDE: N39.94442°  
LONGITUDE: W104.80214°  
ELEVATION: 5047'  
PDOP: 1.2  
QTR/QTR: SE4/SW4

#### LANDING POINT:

LATITUDE: N39.94458°  
LONGITUDE: W104.79774°  
FOOTAGE: 460' FSL, 2200' FEL  
SEC. 20, T1S, R66W

#### BOTTOM HOLE:

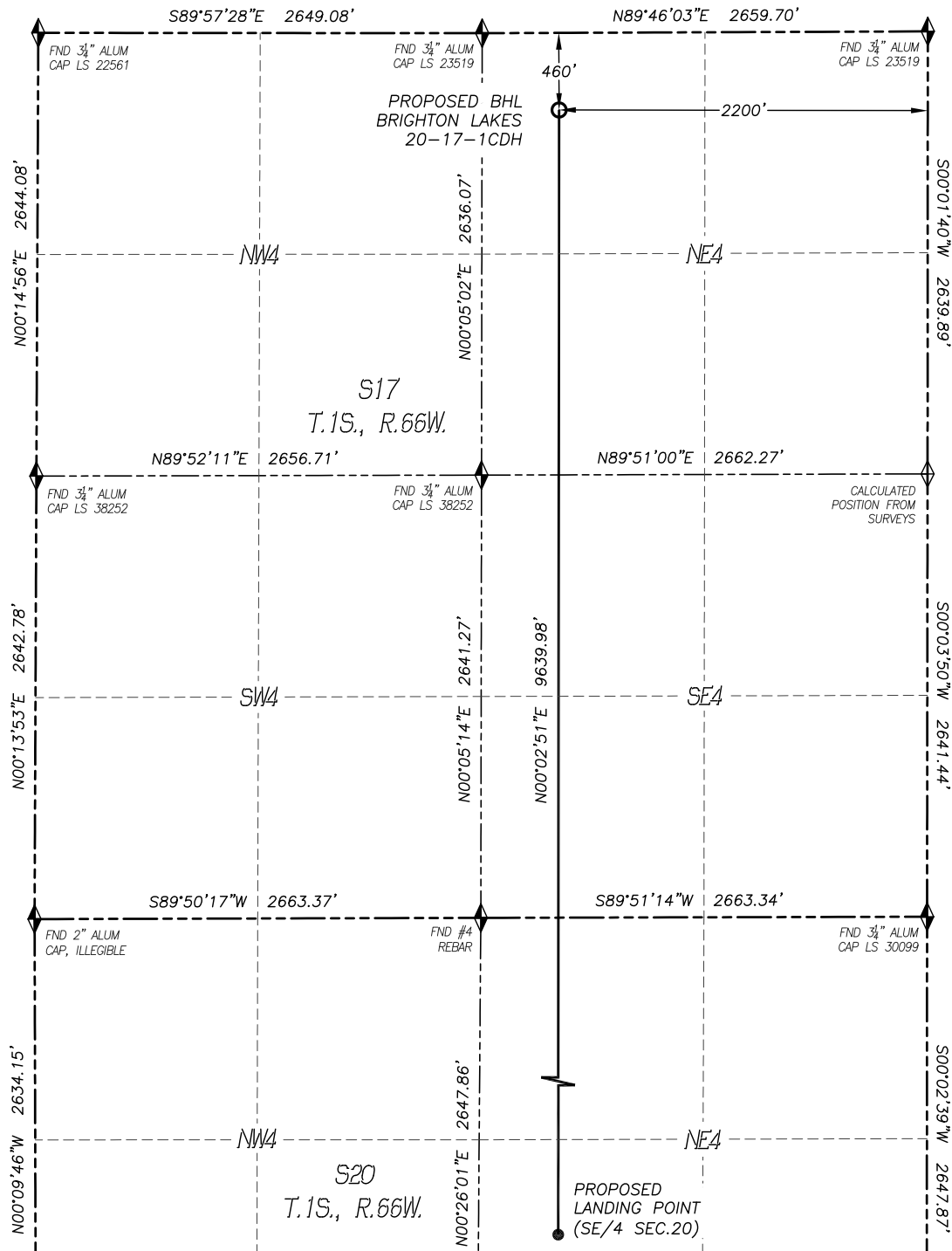
LATITUDE: N39.97104°  
LONGITUDE: W104.79769°



# WELL LOCATION CERTIFICATE

## BRIGHTON LAKES 20-17-1CDH

SECTION: 20  
TOWNSHIP: 1S  
RANGE: 66W



### LEGEND

- ◆ FOUND MONUMENT AS DESCRIBED
- ☼ PROPOSED WELL
- ⊙ EXISTING WELL
- BOTTOM HOLE
- ⊘ ABANDONED WELL
- ◆ CALCULATED POSITION

0 1000'  
SCALE: 1" = 1000'