

T7N, R81W, 6th P.M.

**SandRidge Exploration & Production, LLC**

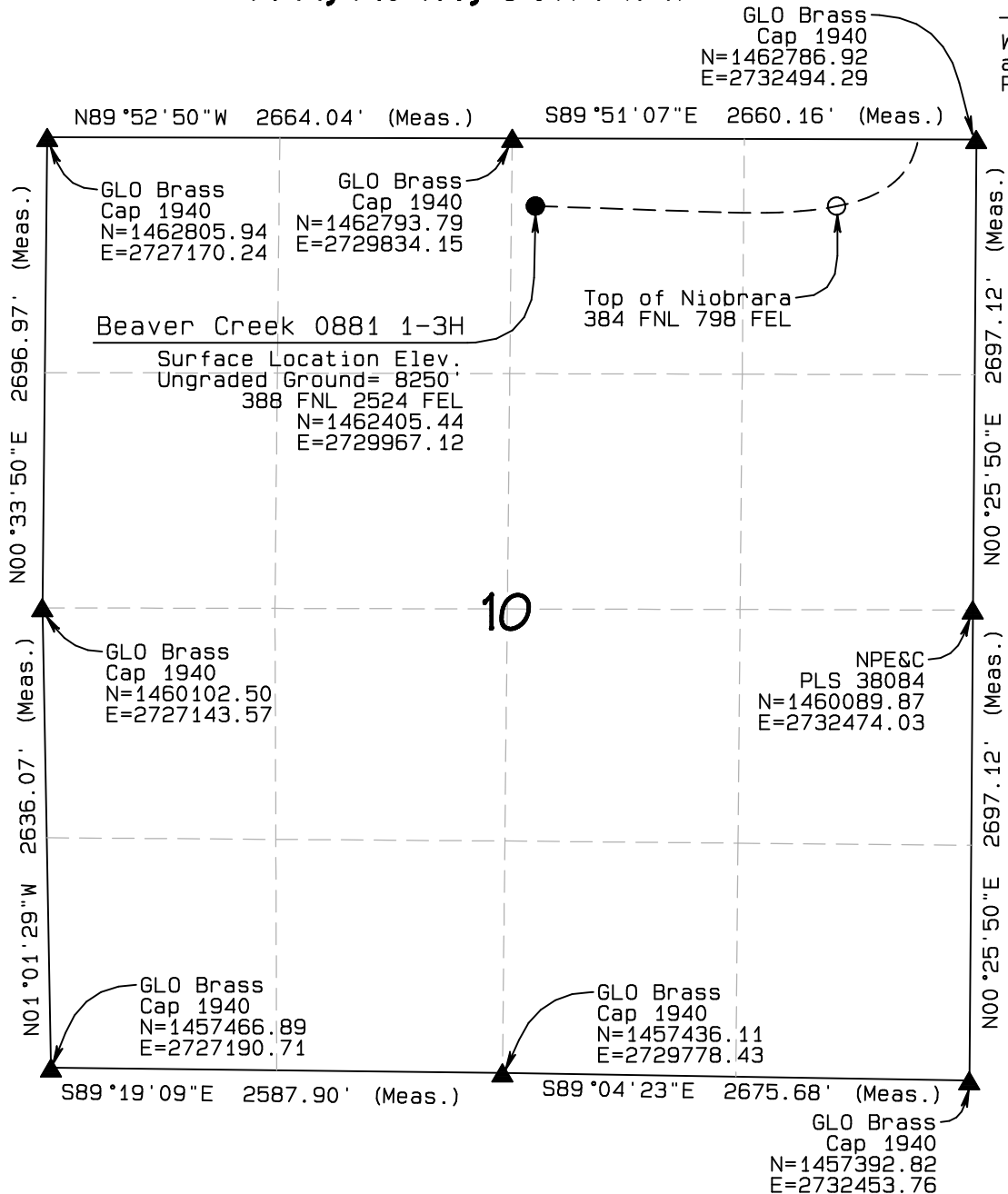
Well location, Beaver Creek 0881 1-3H located as shown in the NW1/4NE1/4 of Section 10, T7N, R81W, 6th P.M., Jackson County, Colorado.

BASIS OF BEARINGS:

US STATE PLANE 1983  
CO NORTH 0501 GRID

BASIS OF ELEVATION

SPOT ELEVATION AT THE NW CORNER OF SECTION 10, T7N, R81W, 6TH PM, TAKEN FROM THE COALMONT QUADRANGLE, USGS 7.5 MIN QUAD (TOPOGRAPHIC MAP) WITH SAID ELEVATION MARKED AS BEING 8251 FEET.



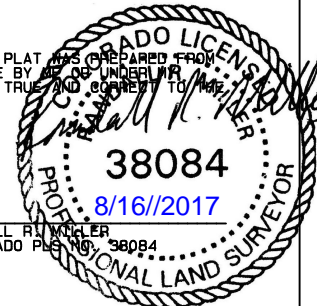
LEGEND

- 90° SYMBOL
- FOUND CORNER
- PROPOSED WELL
- PROPOSED BHL/LPL

GRAPHIC SCALE 1"=1000'



THIS IS TO CERTIFY THAT THE ABOVE PLAT WAS PREPARED FROM FIELD NOTES OF ACTUAL SURVEYS MADE BY ME OR UNDER MY SUPERVISION AND THAT THE SAME ARE TRUE AND CORRECT TO THE BEST OF MY KNOWLEDGE AND BELIEF.



RANDALL R. WINKLER  
COLORADO PLS. NO. 38084

**NORTH PARK ENGINEERING & CONSULTING, INC.**

P.O. BOX 395  
WALDEN, CO 80480  
(970) 723-3725

NAD 83 (TOP OF FORMATION)	NAD 83 (SURFACE LOCATION)
LATITUDE=40.598688°N LONGITUDE=106.466215°W	LATITUDE=40.59863661°N LONGITUDE=106.4724301°W PDOP = 1.446
NAD 83 (LEASE ENTRY)	NAD 83 (LANDING POINT LOCATION)
LATITUDE=40.610864°N LONGITUDE=106.464613°W	LATITUDE=40.600575°N LONGITUDE=106.464466°W
NAD 83 (TARGET BOTTOM HOLE)	
LATITUDE=40.61373777°N LONGITUDE=106.4646538°W	

DATE OF FIELD WORK: SEP 15, 2016 DRAWING COMPLETION: AUG 15, 2017  
SURVEYED BY: ADL DRAWN BY: ADL/RRM CHECKED BY: RRM

# T7N, R81W, 6th P.M.

# SandRidge Exploration & Production, LLC

Landing Point & Bottom Hole location for Beaver Creek 0881 1-3H located as shown in the SE1/4SE1/4 & NE1/4NE1/4 of Section 3, T7N, R81W, 6th P.M., Jackson County, Colorado.





### BASIS OF BEARINGS:

US STATE PLANE 1983  
CO NORTH 0501 GRID

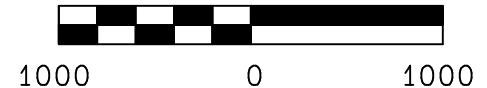
### BASIS OF ELEVATION

SPOT ELEVATION AT THE NW CORNER OF SECTION 10, T7N, R81W, 6TH PM, TAKEN FROM THE COALMONT QUADRANGLE, USGS 7.5 MIN QUAD (TOPOGRAPHIC MAP) WITH SAID ELEVATION MARKED AS BEING 8251 FEET.

### LEGEND

- 90° SYMBOL 
- FOUND CORNER 
- PROPOSED WELL 
- PROPOSED BHL/LPL 

GRAPHIC SCALE 1"=1000'



THIS IS TO CERTIFY THAT THE ABOVE PLANS WAS PREPARED FROM FIELD NOTES OF ACTUAL SURVEYS MADE BY ME OR UNDER MY SUPERVISION AND THAT THE SAME ARE TRUE AND CORRECT TO THE BEST OF MY KNOWLEDGE AND BELIEF.



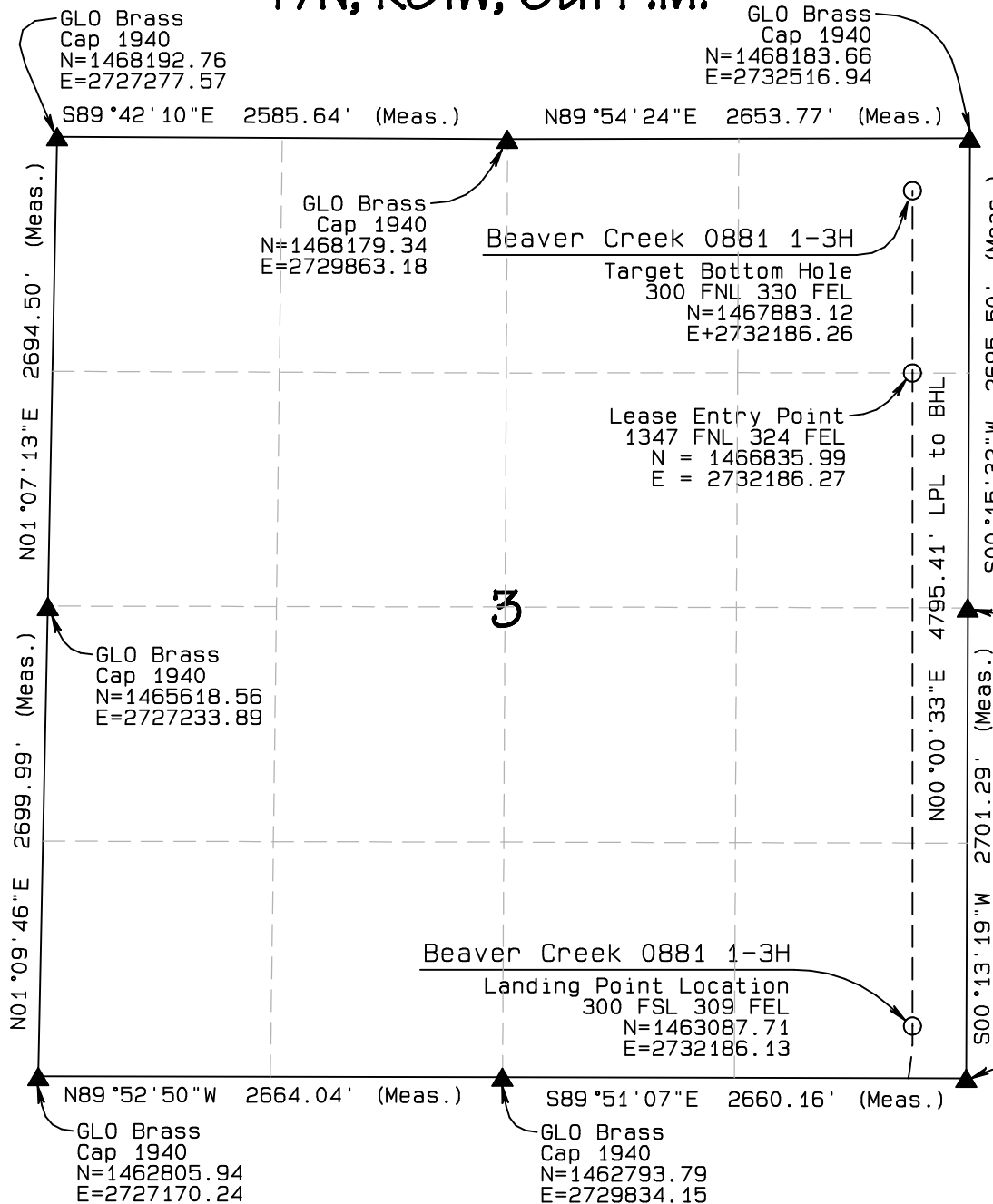
RANDALL L. SWITLER  
COLORADO LICENSE NO. 38084

**NORTH PARK ENGINEERING & CONSULTING, INC.**

P.O. BOX 395  
WALDEN, CO 80480  
(970) 723-3725

DATE OF FIELD WORK: SEP 15, 2016 DRAWING COMPLETION: AUG 15, 2017

SURVEYED BY: ADL DRAWN BY: ADL/RRM CHECKED BY: RRM



NAD 83 (TOP OF FORMATION)	NAD 83 (SURFACE LOCATION)
LATITUDE=40.598688°N LONGITUDE=106.466215°W	LATITUDE=40.59863661°N LONGITUDE=106.4724301°W PDOP = 1.446
NAD 83 (LEASE ENTRY)	NAD 83 (TARGET BOTTOM HOLE)
LATITUDE=40.610864°N LONGITUDE=106.464613°W	LATITUDE=40.61373777°N LONGITUDE=106.4646538°W
	NAD 83 (LANDING POINT LOCATION)
	LATITUDE=40.600575°N LONGITUDE=106.464466°W