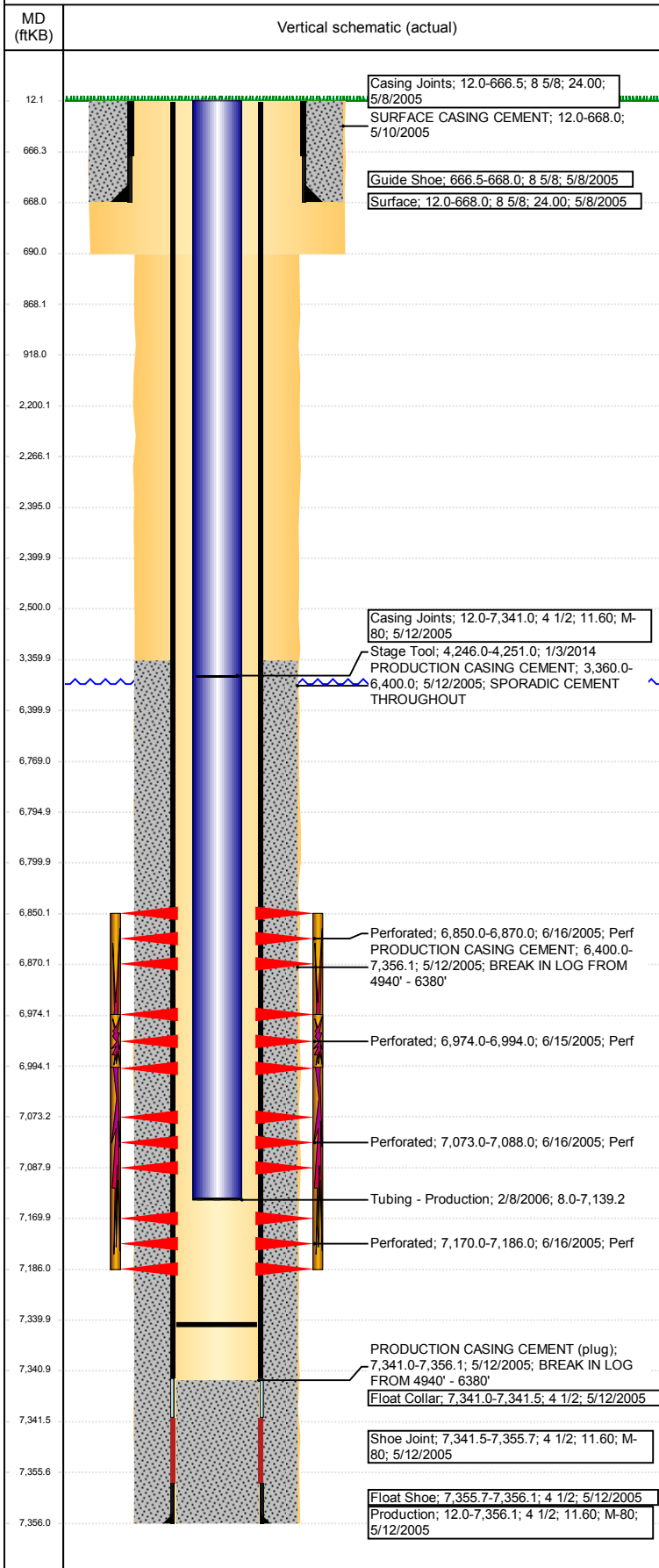


Wellbore Schematic Input Report

Well Name: CARLSON 18-41

VERTICAL - ORIGINAL HOLE, 8/17/2017 4:56:36 PM



Well Header

API 05-123-22792	Business Unit DJ BASIN	District 15	Well Config VERTICAL
Original KB Elevation (ft) 4,799	KB - GL / MSL (ftKB) 12.00	Spud Date 5/8/2005	P & A Date
Comment DRILLER'S TD = 7356', LOGGER'S TD = 7366'			
Directions To Well			

Congressional Location

Quarter 3 NE	Quarter 4 SE	Section 18	Township 6	Twnshp N/S Dir N	Range 66	Range E/W Dir W
-----------------	-----------------	---------------	---------------	---------------------	-------------	--------------------

Bottom Hole Location

North-South Distance (ft)	From N or S Line	East-West Distance (ft)	From E or W Line
---------------------------	------------------	-------------------------	------------------

Plug Back Total Depths

Date	Depth (ftKB)	Method	Com
5/12/2005	7,341.0	CASING TALLY	TOP OF FLOAT COLLAR
5/19/2005	7,330.0	CASED HOLE LOG	DEPTH LOGGER ON CBL
2/8/2006	7,340.0	TAG	CLEANOUT

Wellbore Sections

Section Des	Size (in)	Act Top, MD (ftKB)	Act Btm, MD (ftKB)
SURFACE	12 1/4	12	690
PRODUCTION	7 7/8	690	7,356

Zone Statuses

Zone Name	Status Date	Status	Fluid Type	Job	Prod Method
CODELL	7/12/2005	PR		DRILLING/CO...	
NIOBRARA	7/12/2005	PR		DRILLING/CO...	

Casing Strings

Surface, 668.0ftKB

Casing Description	Run Date	OD (in)	Wt/Len (l...)	Grade	Top, MD (ft...)	MD (ftKB)
Surface	5/8/2005	8 5/8	24.00		12.0	668.0

Production, 7,356.1ftKB

Casing Description	Run Date	OD (in)	Wt/Len (l...)	Grade	Top, MD (ft...)	MD (ftKB)
Production	5/12/2005	4 1/2	11.60	M-80	12.0	7,356.1

Cement

Description	Top Depth (ftKB)	Bottom Depth (ftKB)
SURFACE CASING CEMENT	12.0	668.0
PRODUCTION CASING CEMENT	3,360.0	6,400.0
PRODUCTION CASING CEMENT	6,400.0	7,356.1
Cement Plug	6,769.0	6,795.0
Cement Squeeze	2,200.0	2,500.0
Balance Plug	2,400.0	2,500.0
Cement Plug	2,266.0	2,395.0
Cement Plug	12.0	868.0
Balance Plug	868.0	918.0

Tubing Strings

Tubing Description	Run Date	String...	ID (in)	Wt (lb/ft)	Grade	Len (ft)	Set De...
Tubing - Production	2/8/2006	2 3/8	2.00	4.70	J-55	7,131.23	

Other In Hole

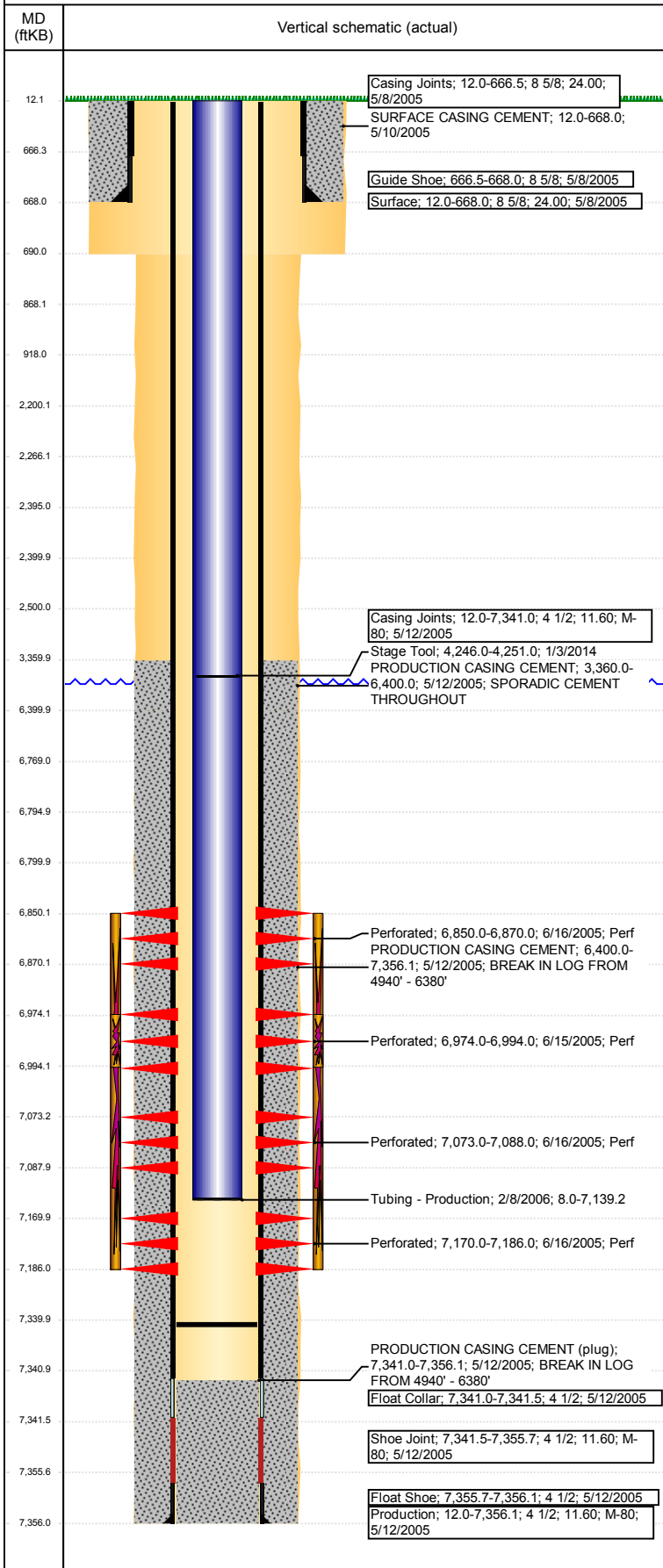
Run Date	Des	OD (in)	Top (ftKB)	Btm (ftKB)
	Cast Iron Bridge Plug	4	6,795.0	6,800.0
	Cement Retainer	4	2,395.0	2,400.0

Logs

Date	Type	Top, MD (ftKB)	Btm, MD (ftKB)
5/12/2005	COMPENSATED DENSITY	3,450.0	7,346.0
5/12/2005	INDUCTION	680.0	7,366.0
5/19/2005	CBL/CCL/GR	2,900.0	7,330.0

Well Name: CARLSON 18-41

VERTICAL - ORIGINAL HOLE, 8/17/2017 4:56:37 PM



Perforation Data					
Linked Zone	Bnch/St g	Sum of Entered Shot Total	Top (ftKB)	Btm (ftKB)	Date
CODELL, ORIGINAL HOLE		0	2,500.00	2,500.00	7/25/2017
NIOBRARA, ORIGINAL HOLE	A	0	6,850.00	6,870.00	6/16/2005
NIOBRARA, ORIGINAL HOLE	B	0	6,974.00	6,994.00	6/15/2005
NIOBRARA, ORIGINAL HOLE	C	0	7,073.00	7,088.00	6/16/2005
CODELL, ORIGINAL HOLE		0	7,170.00	7,186.00	6/16/2005
Total (Sum)		0			

Stimulation Intervals		
Start Date 6/17/2005	Primary Job Type DRILLING/COMPLETION - ORIGINAL	
Technical Result	Tech Result Details	Tech Result Note
Comment LIMITED ENTRY FRAC		
Start Date 6/17/2005	Primary Job Type DRILLING/COMPLETION - ORIGINAL	
Technical Result	Tech Result Details	Tech Result Note
Comment LIMITED ENTRY FRAC		