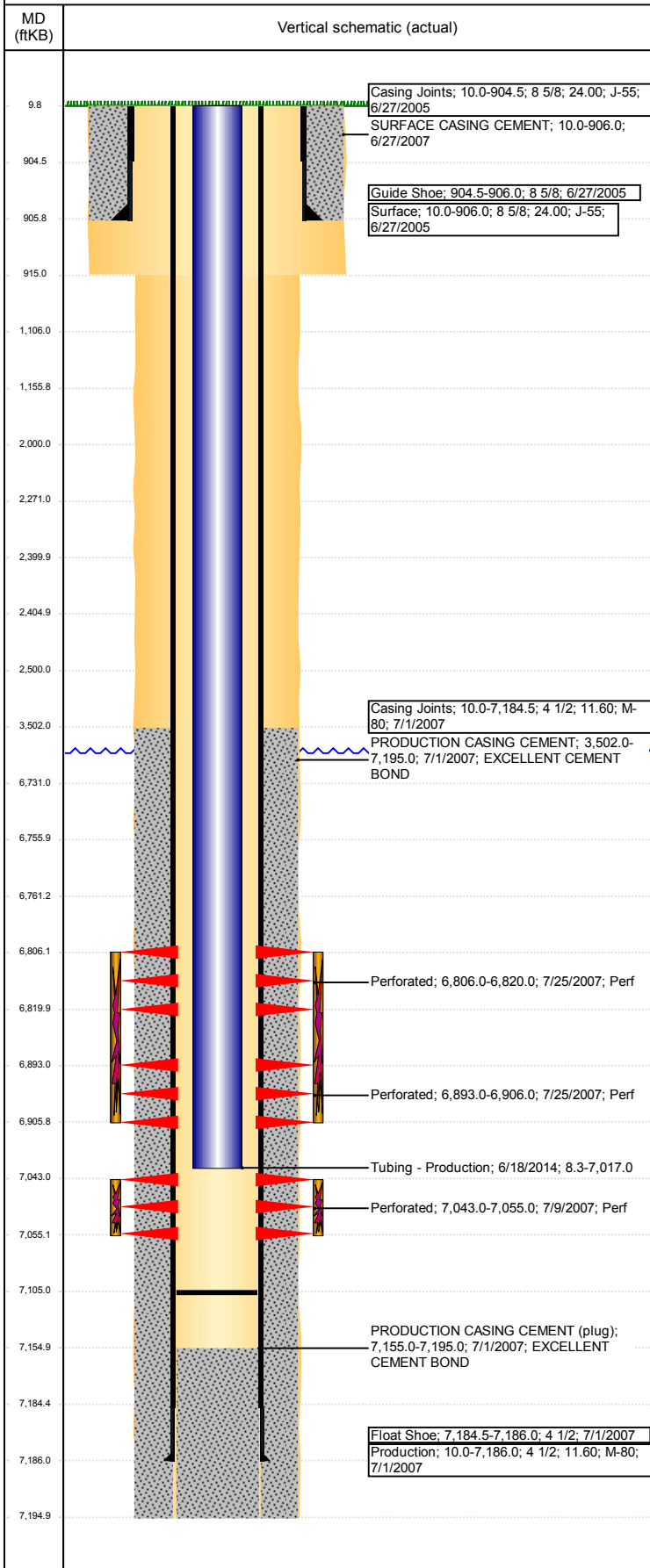


**Well Name: WASTE MANAGEMENT USX Y 03-06**

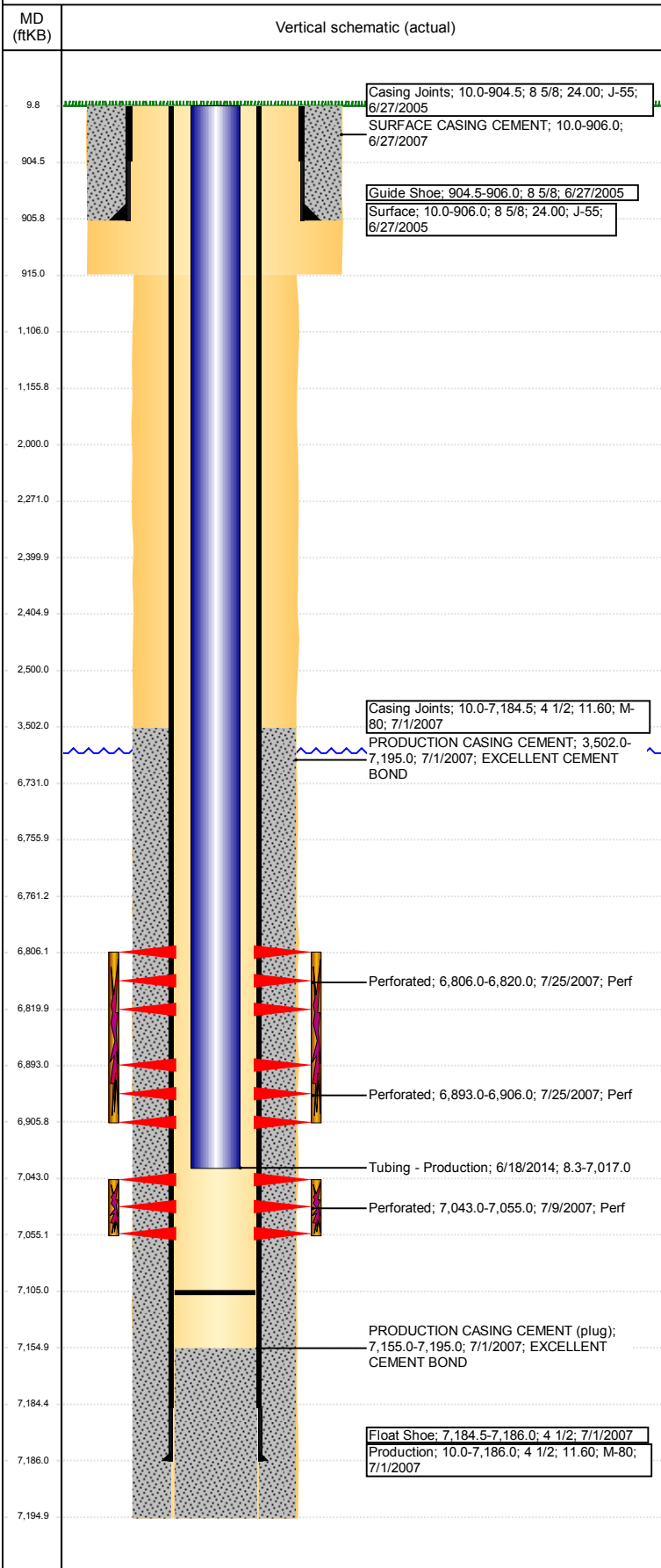
VERTICAL - ORIGINAL HOLE, 8/17/2017 4:50:08 PM



Well Header							
API 05-123-24791	Business Unit DJ BASIN		District 15		Well Config VERTICAL		
Original KB Elevation (ft) 4,902	KB - GL / MSL (ftKB) 10.00		Spud Date 6/26/2007		P & A Date		
Comment							
Directions To Well							
Congressional Location							
Quarter 3 SE	Quarter 4 NW	Section 3	Township 2	TwNshp N/S Dir N	Range 64	Range E/W Dir W	
Bottom Hole Location							
North-South Distance (ft)		From N or S Line		East-West Distance (ft)		From E or W Line	
Plug Back Total Depths							
Date	Depth (ftKB)	Method		Com			
7/1/2007	7,171.0	CASING TALLY		FLOAT COLLAR ON CASING TALLY			
7/9/2007	7,155.0	CASED HOLE LOG		DEPTH LOGGER ON CBL			
10/19/2007	7,105.0	TAG		PUSHED PLUG TO 7105'			
Wellbore Sections							
Section Des		Size (in)		Act Top, MD (ftKB)		Act Btm, MD (ftKB)	
SURFACE		12 1/4		10		915	
PRODUCTION		7 7/8		915		7,195	
Zone Statuses							
Zone Name	Status Date	Status	Fluid Type	Job	Prod Method		
CODELL	8/30/2007	PR	Water	DRILLING/CO...	Flowing		
CODELL	2/16/2013	PR					
NIOBRARA	8/30/2007	PR	Water	DRILLING/CO...	Flowing		
NIOBRARA	2/16/2013	PR					
NIOBRARA	5/9/2017	SI					
Casing Strings							
Surface, 906.0ftKB							
Casing Description	Run Date	OD (in)	Wt/Len (l...	Grade	Top, MD (ft...	MD (ftKB)	
Surface	6/27/2005	8 5/8	24.00	J-55	10.0	906.0	
Production, 7,186.0ftKB							
Casing Description	Run Date	OD (in)	Wt/Len (l...	Grade	Top, MD (ft...	MD (ftKB)	
Production	7/1/2007	4 1/2	11.60	M-80	10.0	7,186.0	
Cement							
Description				Top Depth (ftKB)	Bottom Depth (ftKB)		
SURFACE CASING CEMENT				10.0	906.0		
Description				Top Depth (ftKB)	Bottom Depth (ftKB)		
PRODUCTION CASING CEMENT				3,502.0	7,195.0		
Description				Top Depth (ftKB)	Bottom Depth (ftKB)		
Dump Bail				6,731.0	6,756.0		
Description				Top Depth (ftKB)	Bottom Depth (ftKB)		
Production Casing Cement				2,000.0	2,500.0		
Description				Top Depth (ftKB)	Bottom Depth (ftKB)		
Cement Plug				2,405.0	2,500.0		
Description				Top Depth (ftKB)	Bottom Depth (ftKB)		
Cement Plug				2,271.0	2,400.0		
Description				Top Depth (ftKB)	Bottom Depth (ftKB)		
Balance Plug				1,106.0	1,156.0		
Description				Top Depth (ftKB)	Bottom Depth (ftKB)		
Balance Plug				10.0	1,106.0		
Tubing Strings							
Tubing Description	Run Date	String...	ID (in)	Wt (lb/ft)	Grade	Len (ft)	Set De...
Tubing	10/19/2007	2 3/8	2.00	4.70	J-55	7,017.00	
Tubing Description	Run Date	String...	ID (in)	Wt (lb/ft)	Grade	Len (ft)	Set De...
Tubing - Production	6/18/2014	2 3/8	2.00	4.70	J-55	7,008.67	
Other In Hole							
Run Date	Des			OD (in)	Top (ftKB)	Btm (ftKB)	
6/15/2017	Cast Iron Bridge Plug			3.994	6,756.0	6,761.0	
6/15/2017	Cement Retainer			3.994	2,400.0	2,405.0	
Logs							
Date	Type			Top, MD (ftKB)		Btm, MD (ftKB)	
7/1/2007	COMPENSATED DENSITY			2,890.0		7,177.0	
7/1/2007	INDUCTION			905.0		7,197.0	
7/9/2007	CBL/CCL/GR			3,350.0		7,154.0	

**Well Name: WASTE MANAGEMENT USX Y 03-06**

VERTICAL - ORIGINAL HOLE, 8/17/2017 4:50:09 PM



Logs			
Date	Type	Top, MD (ftKB)	Btm, MD (ftKB)
4/29/2013	GYRO	0.0	7,000.0

Perforation Data					
Linked Zone	Bnch/St g	Sum of Entered Shot Total	Top (ftKB)	Btm (ftKB)	Date
		0	2,400.00	2,400.00	6/15/2017
NIOBRARA, ORIGINAL HOLE	B	56	6,806.00	6,820.00	7/25/2007
NIOBRARA, ORIGINAL HOLE	C	52	6,893.00	6,906.00	7/25/2007
CODELL, ORIGINAL HOLE		48	7,043.00	7,055.00	7/9/2007
<b>Total (Sum)</b>		<b>156</b>			

Stimulation Intervals		
Start Date	Primary Job Type	
7/25/2007	DRILLING/COMPLETION - ORIGINAL	
Technical Result	Tech Result Details	Tech Result Note
Comment		
Start Date	Primary Job Type	
7/25/2007	DRILLING/COMPLETION - ORIGINAL	
Technical Result	Tech Result Details	Tech Result Note
Comment		