

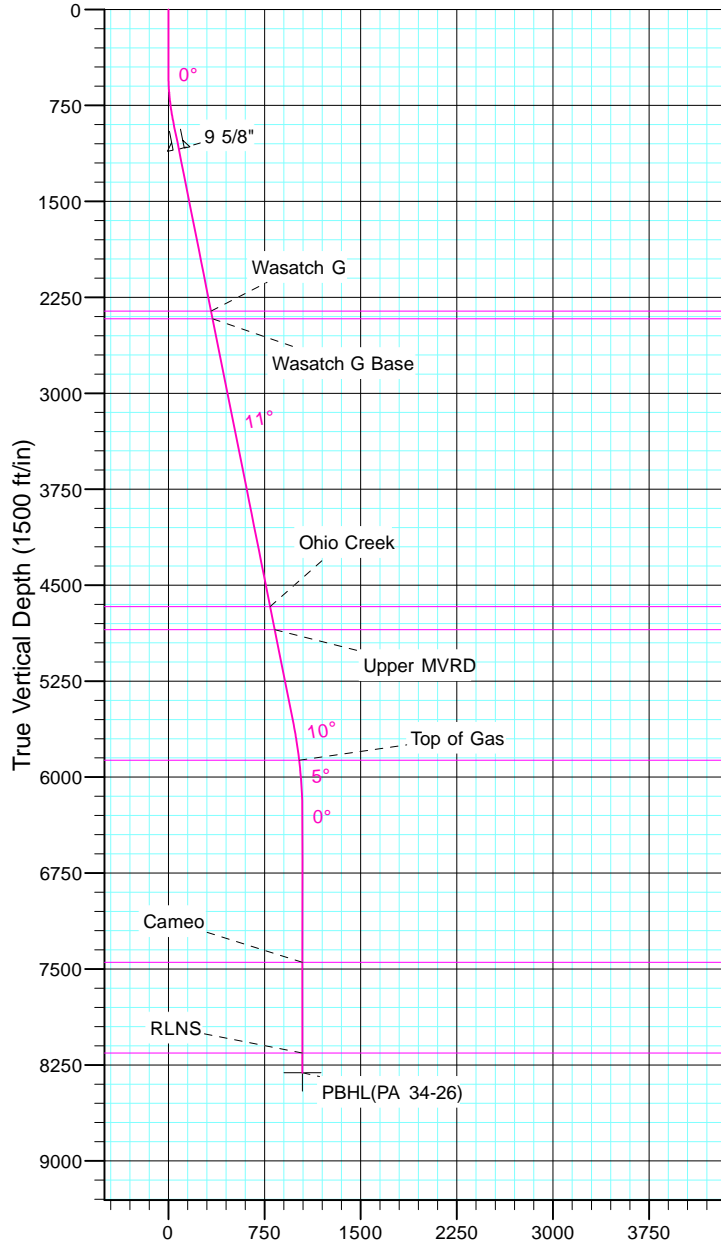
TEP Rocky Mountain LLC

Project: Garfield County, CO NAD83
 Site: PA 23-26 Pad
 Well: PA 34-26
 Wellbore: OH
 Design: Plan #1



Azimuths to True North
 Magnetic North: 9.70°

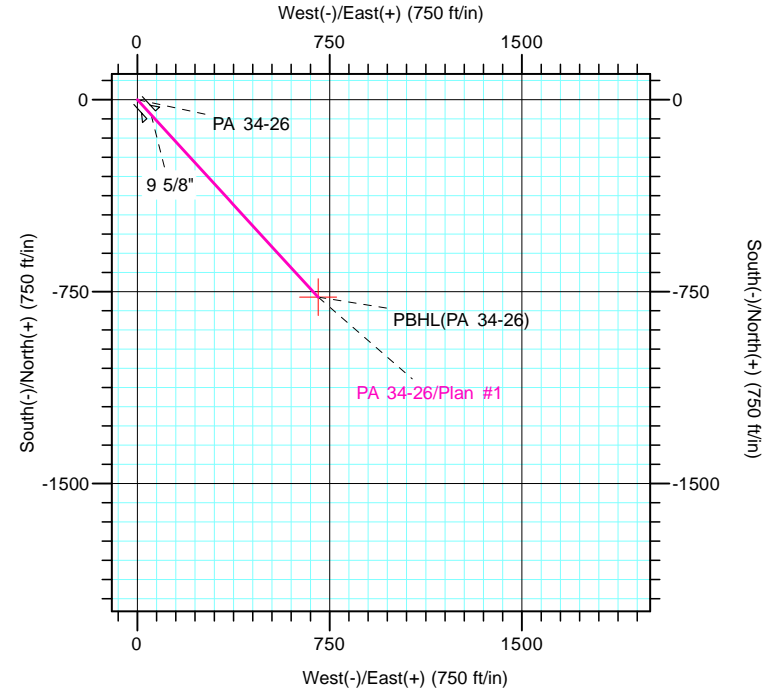
Magnetic Field
 Strength: 51543.2snT
 Dip Angle: 65.59°
 Date: 5/19/2017
 Model: IGRF2015



Vertical Section at 137.61° (1500 ft/in)

CASING DETAILS			
TVD	MD	Name	Size
1093.2	1100.0	9 5/8"	9.625

FORMATION TOP DETAILS		
TVDPath	MDPath	Formation
2358.0	2389.7	Wasatch G
2418.0	2450.8	Wasatch G Base
4668.0	4745.2	Ohio Creek
4848.0	4928.7	Upper MVRD
5868.0	5966.6	Top of Gas
7448.0	7547.6	Cameo
8158.0	8257.6	RLNS



DESIGN TARGET DETAILS							
Name	TVD	+N/-S	+E/-W	Northing	Easting	Latitude	Longitude
PBHL(PA 34-26)	8311.0	-772.1	704.9	1613608.50	2304604.80	39° 29' 32.018 N	107° 57' 51.751 W

SECTION DETAILS										
Sec	MD	Inc	Azi	TVD	+N/-S	+E/-W	Dleg	TFace	VSect	Target
1	0.0	0.00	0.00	0.0	0.0	0.0	0.00	0.00	0.0	
2	500.0	0.00	0.00	500.0	0.0	0.0	0.00	0.00	0.0	
3	876.0	11.28	137.61	873.6	-27.2	24.9	3.00	137.61	36.9	
4	5655.6	11.28	137.61	5560.9	-717.7	655.2	0.00	0.00	971.7	
5	6407.6	0.00	0.00	6308.0	-772.1	704.9	1.50	180.00	1045.5	
6	8410.6	0.00	0.00	8311.0	-772.1	704.9	0.00	0.00	1045.5	PBHL(PA 34-26)