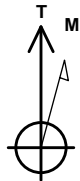
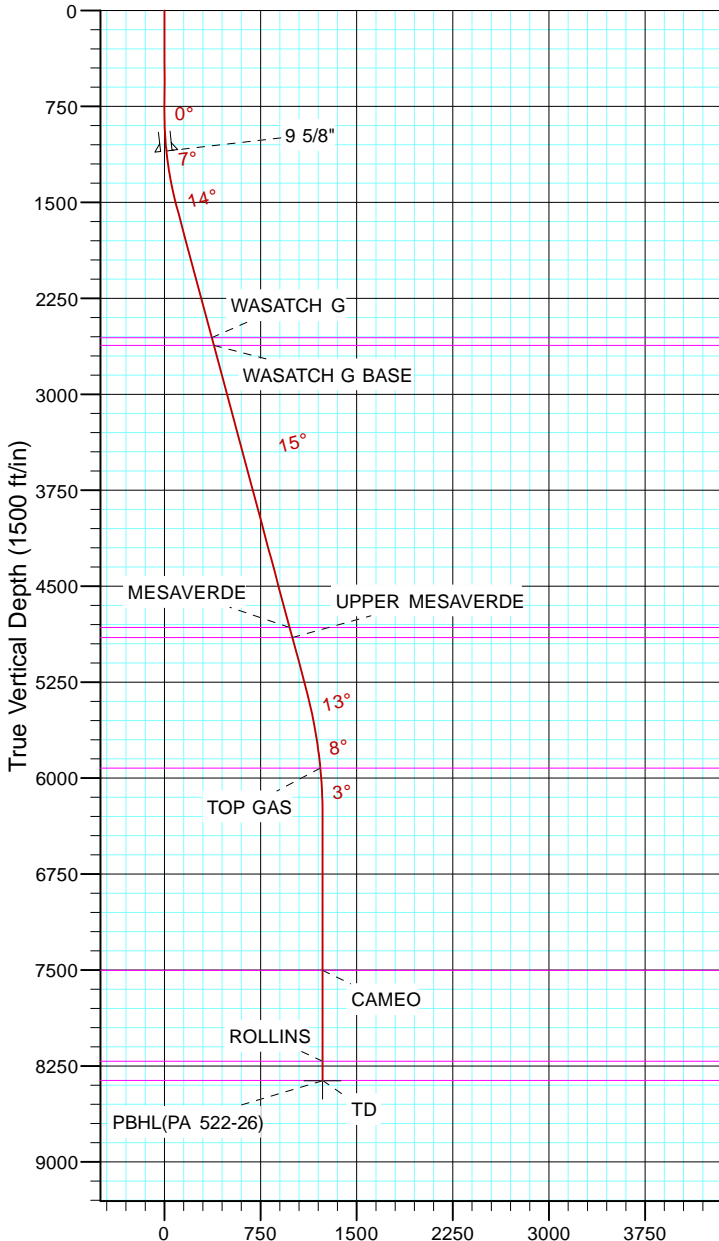


TEP Rocky Mountain LLC
Project: Garfield County, CO NAD83
Site: PA 23-26 Pad
Well: PA 522-26
Wellbore: OH
Design: Plan #1



Azimuths to True North
Magnetic North: 11.44°

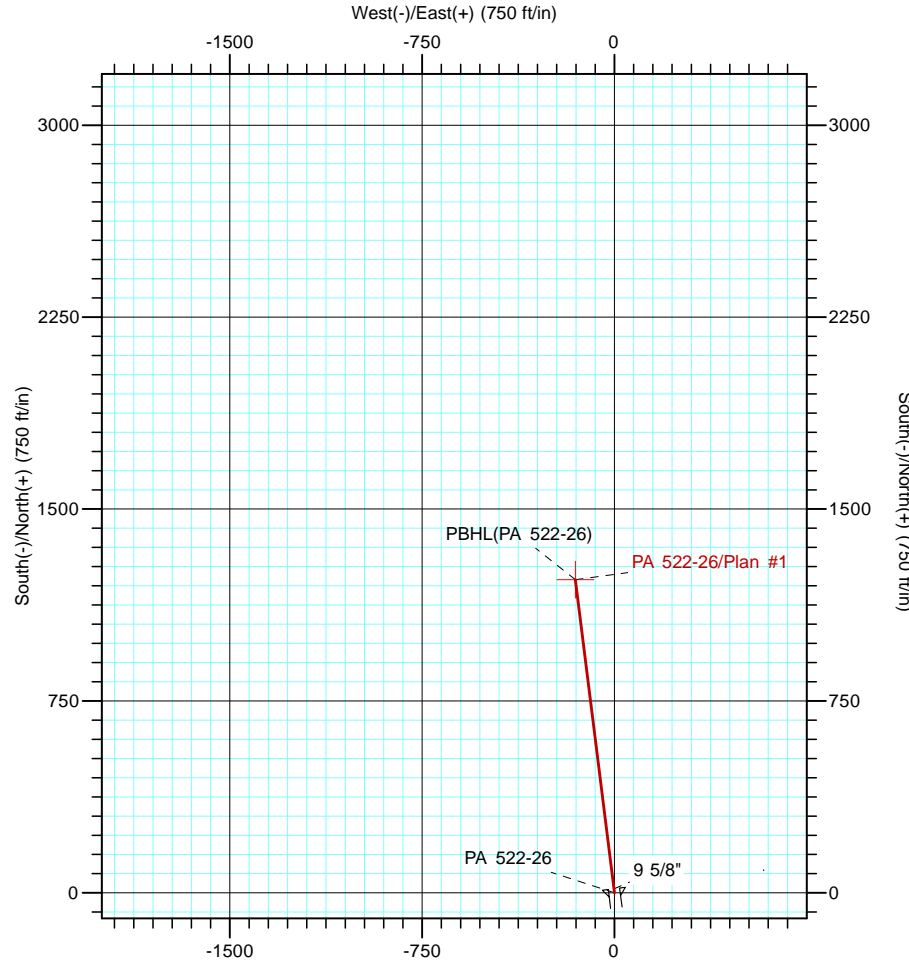
Magnetic Field
Strength: 53054.0snT
Dip Angle: 65.99°
Date: 12/31/2004
Model: IGRF2000



Vertical Section at 352.90° (1500 ft/in)

CASING DETAILS			
TVD	MD	Name	Size
1099.5	1100.0	9 5/8"	9.625

FORMATION TOP DETAILS			
TVDPATH	MDPATH	FORMATION	
2558.0	2602.4	WASATCH G	
2618.0	2664.5	WASATCH G BASE	
4823.0	4947.2	MESAVERDE	
4903.0	5030.1	UPPER MESAVERDE	
5923.0	6074.8	TOP GAS	
7503.0	7655.3	CAMEO	
8213.0	8365.3	ROLLINS	
8363.0	8515.3	TD	



DESIGN TARGET DETAILS							
Name	TVD	+N/-S	+E/-W	Northing	Easting	Latitude	Longitude
PBHL(PA 522-26)	8366.0	1224.4	-152.4	1615617.50	2303787.10	39° 29' 51.648 N	107° 58' 2.873 W

SECTION DETAILS										
Sec	MD	Inc	Azi	TVD	+N/-S	+E/-W	Dleg	TFace	VSect	Target
1	0.0	0.00	0.00	0.0	0.0	0.0	0.00	0.00	0.0	
2	800.0	0.00	0.00	800.0	0.0	0.0	0.00	0.00	0.0	
3	1549.8	15.00	352.90	1541.3	96.8	-12.1	2.00	352.90	97.6	
4	5438.6	15.00	352.90	5297.6	1095.4	-136.4	0.00	0.00	1103.8	
5	6438.3	0.00	0.00	6286.0	1224.4	-152.4	1.50	180.00	1233.9	
6	8518.3	0.00	0.00	8366.0	1224.4	-152.4	0.00	0.00	1233.9	PBHL(PA 522-26)