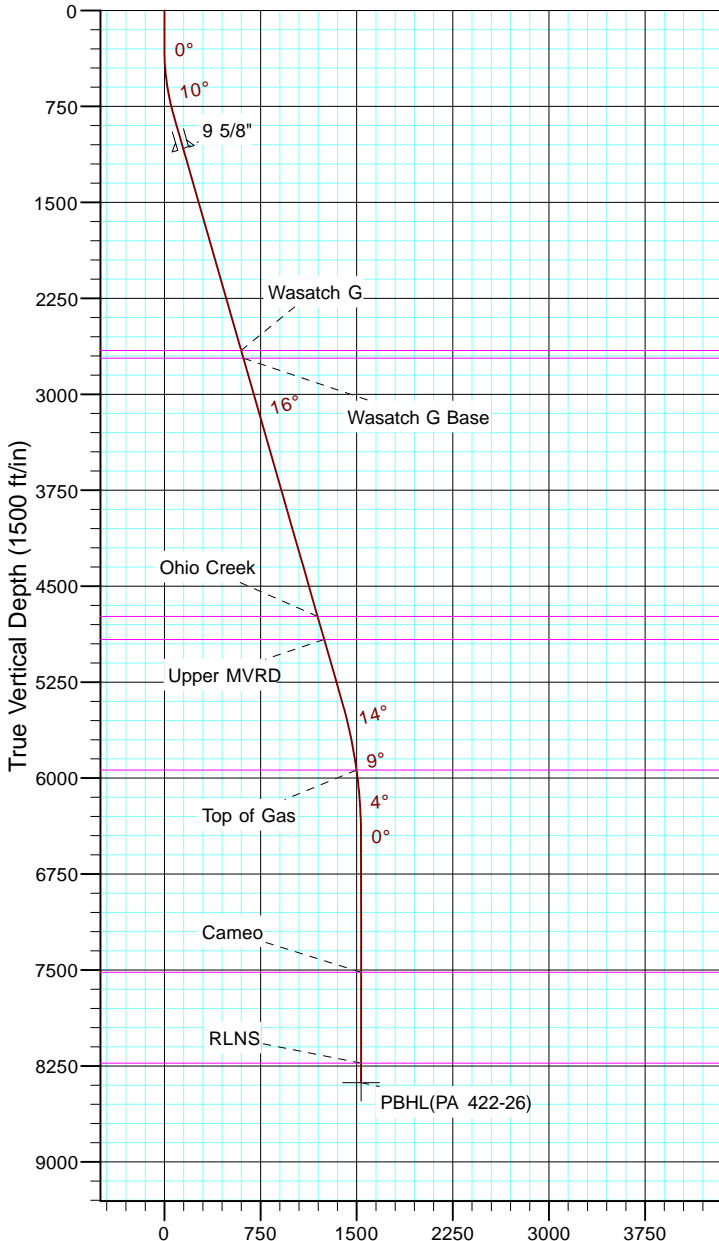


TEP Rocky Mountain LLC
Project: Garfield County, CO NAD83
Site: PA 23-26 Pad
Well: PA 422-26
Wellbore: OH
Design: Plan #1



Azimuths to True North
Magnetic North: 11.44°

Magnetic Field
Strength: 53054.1snT
Dip Angle: 65.99°
Date: 12/31/2004
Model: IGRF2000



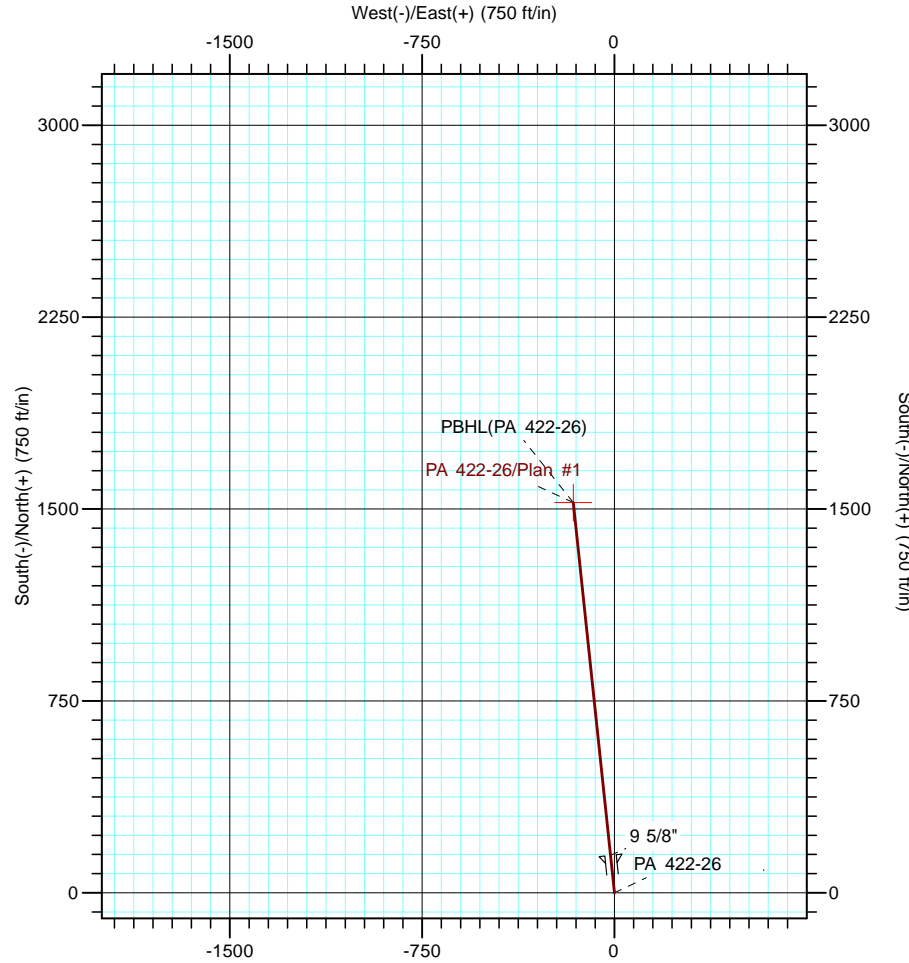
Vertical Section at 354.00° (1500 ft/in)

CASING DETAILS

TVD	MD	Name	Size
1082.8	1100.0	9 5/8"	9.625

FORMATION TOP DETAILS

TVDPATH	MDPATH	FORMATION
2658.0	2738.7	Wasatch G
2718.0	2801.1	Wasatch G Base
4738.0	4902.5	Ohio Creek
4918.0	5089.7	Upper MVRD
5938.0	6141.5	Top of Gas
7518.0	7723.1	Cameo
8228.0	8433.1	RLNS



DESIGN TARGET DETAILS

Name	TVD	+N/-S	+E/-W	Northing	Easting	Latitude	Longitude
PBHL(PA 422-26)	8381.0	1525.6	-160.5	1615928.80	2303787.10	39° 29' 54.723 N	107° 58' 2.981 W

SECTION DETAILS

Sec	MD	Inc	Azi	TVD	+N/-S	+E/-W	Dleg	TFace	Vsect	Target
1	0.0	0.00	0.00	0.0	0.0	0.0	0.00	0.00	0.0	
2	300.0	0.00	0.00	300.0	0.0	0.0	0.00	0.00	0.0	
3	833.2	16.00	354.00	826.3	73.6	-7.7	3.00	354.00	74.0	
4	5594.6	16.00	354.00	5403.3	1378.5	-145.0	0.00	0.00	1386.1	
5	6661.1	0.00	0.00	6456.0	1525.6	-160.5	1.50	180.00	1534.1	
6	8586.1	0.00	0.00	8381.0	1525.6	-160.5	0.00	0.00	1534.1	PBHL(PA 422-26)